

BROCKLEY SOCIETY



Issue 117 October 2009
Charity No: 1004245

Delivered free to 4000 households in Brockley Conservation Area
three times a year: March, June and November

BROCKLEY SOCIETY

Annual General Meeting

Tuesday 10 November 2009
Brockley Social Club
230 Brockley Road, SE4 2SU
(cnr Foxberry Road, next to Esso garage)
An illustrated talk by **John Coulter**,
Lewisham Local Studies Librarian
The buildings and history of Lewisham Way
followed by the AGM

We have several vacancies on the committee
and we want your ideas for the year ahead.

All are welcome!

It's Panto Time!

Mother Goose
Saturday 12 December, 2pm.
Greenwich Theatre. See p 2

MidWinter Warmer

Saturday 30 January 2010 2pm-4pm
Brockley Social Club
All Brockley's seniors welcome
Entertainment, singalongs, raffle, tea,
cakes and drinks. See p 2

Brockley Society Open Meeting

Tuesday 16 March, 8pm Venue tbc

Brockley Society Planning and Conservation

Meetings are held throughout the year.
Email cat@cmansuy.com for dates
or to express interest.

Copy deadlines for newsletter:
1 February, 1 May, 1 October

If you have ideas about the newsletter or would
like to contribute, please email
brocsocnews@yahoo.co.uk

Farmers' Markets on Hilly Fields
Second Saturday of each month 10am-3pm

BROCKLEY SOCIETY

www.brockley.com/brocsoc/

Chair vacant
Fayre (general) www.brockley.com/brocsoc/
Newsletter 07530 799 737
BrocsocNews@yahoo.co.uk
Newsletter advertising 8692 3829
clare@sumner-type.co.uk
Transport & highways 8691 1463
Local history 07903 150 099
fonemefirst@talktalk.net
Planning & conservation 07904 508 678
fonemefirst@talktalk.net

Everyone living in the Brockley Conservation
area is automatically a member of the Brockley
Society. The Brockley Society welcomes all.



Pictures: Karl Brandt

Hilly Fields Midsummer Fayre on Saturday 20 June 2009

Run by Brockley Society with a large
team of volunteers, the Fayre was
once again a lively event, enjoyed by
several thousand people from the
immediate area and further afield.
The pictures (above and page 3) tell
the story. Thanks to all the helpers
and sponsors for making it such a
success.

Next year's Fayre will be on
Saturday 19 June. The booking
forms and all other details will be on
our website, www.brockley.com/brocsoc/,
in early 2010. If you want
to be part of the team running the
fayre, contact Clare (020 8692 3829
or clare@sumner-type.co.uk).

Campaign Against Local Rail Service Cuts

In 2007 local residents supported a petition
opposing cuts to peak services to London
Bridge from Brockley, Honor Oak Park,
Forest Hill, and Sydenham and other stations
on the same line. That support helped the
community secure improved train services in
the morning peak and, we had thought, in
the evening peak as well. However, since
Southern Railway was awarded the South
Central franchise this summer, it has become
clear that they intend to **cut evening peak
services** from May 2010. This will result in a
30% reduction to trains running to our
stations (from 6 trains per hour to just 4
trains per hour).

It is not just evening peak services that are
affected. **Daytime off-peak services will also
be cut** from 6 to 4 trains per hour, and as
from December 2009 we will no longer have
any direct trains from Charing Cross,
meaning that journeys back from the West
End will always involve a change at London
Bridge late at night.

The Forest Hill Society, Sydenham Society,
and other groups along the route are
campaigning against these cuts to our

services and invite you to sign the latest
petition against these cuts. You can find the
petition at: <http://nototrainscuts.notlong.com>.

Your support for this campaign will help us
speak with a clear voice to the railway
authorities, central government, and local
politicians.

We welcome the coming of the East
London Line next year, but TfL are
projecting a large increase in passenger
numbers once these trains start running, so
any cuts in services from London Bridge will
lead to additional overcrowding on our peak
evening trains in particular. We are not
asking for additional services; we are
demanding that our existing services be kept.

Additional information about this issue
also appears on the following sites:

Forest Hill Society:
<http://foresthillsociety.blogspot.com>

Sydenham Society:
<http://sydenhamsociety.com>

Report from Meeting with TfL and Southern:
http://sydenham.org.uk/news_railway_09_09.html

Brockley Xmas Market

Saturday 28th November marks the 3rd Brockley Christmas Market. The market will take place in Coulgate Street at the side of Brockley Station. There will be festive entertainment. If you would like to apply for a stall, email bxag@fsmail.net for more info and an application form.

It's Panto Time!

The Brockley Society has supported an annual Panto trip for several years now, to the delight of the young at heart in Brockley. This season takes us to Greenwich Theatre to see MOTHER GOOSE on Saturday 12th December at 2pm. Tickets are an astonishingly low £5.50 for children and £8.00 for adults. Book now to avoid disappointment. Contact Debbie on 07753776834 or email badjer@fastmail.fm

Winter Warmer Returns!

Last year's Senior MidWinter Warmer was so successful we decided to do it again on Saturday 30th January at the Brockley Social Club from 2.00 till 4.00. You can expect entertainment, singalongs, a raffle, tea, cakes and drinks. All Brockley's seniors are welcome so please spread the word. If you would like to help in any way (making cakes, transporting people, assisting on the day, making donations for the raffle or the food), please call Kate on 07930 181 174. Look out for our teapot posters in shop windows and on the website in the coming months for more details.

Loampit Vale development

Despite strong opposition from many local residents and organisations, including Hilly Fields Park User Group and Brockley Society, Lewisham's Strategic Planning Committee has agreed the application to develop the Loampit Vale site. Reasons for opposing the application included overcrowding, insufficient affordable housing, and the fact that the 24-storey block (as high as Citibank) will blight the view from countless adjacent areas. While recognising the urgent need for more housing, objectors wanted the application modified to be more suitable.

- Update meeting: Thurs 12 Nov, 7.30pm, the Tabernacle, Algernon Rd.

Brockley Max Once Again A Success

The Brockley Max festival drew to a close on 7th June, and the success of this year's festival was a tribute to Brockley's community spirit and also down to no little help from generally great weather over the 10 days of The Max.

Creativity was at the forefront of many activities with local artists putting on show their talents from the shop front covering



Lewisham Way: The Highway into London

In the past, Lewisham Way formed a handsome entry into London from Kent and the Continent. Today much of it is dilapidated, though many historic buildings survive. There is a danger it could sink to the middle of the Old Kent Road. Brockley Society is concerned that new buildings should enhance this major route and would like it to become once again an attractive highway that welcomes people coming through Lewisham into London. It could become one of Lewisham's jewels.

The picture right shows Pyne Bros. department store on Lewisham Way, opposite the ArtHouse. The procession marks Deptford Youth Week in 1942. Only the building on the right survives. The left-hand building was destroyed by fire in the late 1960s and this is where Big Yellow wants to build a self-storage warehouse.

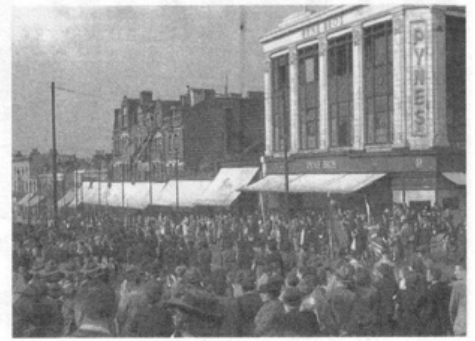
At Brockley Society's AGM on 10 November we will have a talk about Lewisham Way's buildings.

Big Yellow Storage and Potential Negative Impact on Lewisham Way

Big Yellow Storage want to construct a five-storey, 10-metre-high, self-storage warehouse fronting 155 Lewisham Way.

Existing businesses were not consulted and will either close or be forced out of Lewisham. This development will result in the loss of at least 30 jobs. The architecture is horrendous and sits opposite a listed building, the ArtHouse, and a much loved conservation area. If built, the Big Yellow building will blight the area for decades. There are already 11 storage companies within a 2-mile radius - nobody in Lewisham needs another one. The Planning Department had initially supported the proposal that would have given Lewisham Council a £50,000 payment (Section 106 Planning Gain) from Big Yellow. Fortunately, Lewisham Councillors voted 6 to 5 against the proposal at a Committee Meeting and the proposal was thrown out.

Now Big Yellow have demanded a public enquiry to push through their proposal. Fortunately, the Council will now be supporting objectors. Lewisham Way was a once grand parade, and it could be again, but not with this development. This is our main

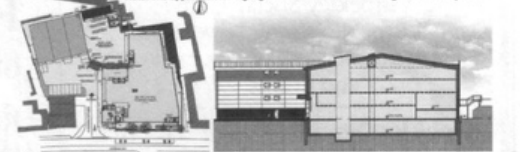


NO TO YELLOW SHAM
STOP BIG YELLOW STORAGE DESTROYING LEWISHAM WAY AND TAKING LOCAL JOBS

Big Yellow Self Storage want to construct a 5 storey, 10,000 sq metre (approx) self-storage warehouse on 155 Lewisham Way. Existing businesses were not consulted and will either close or be forced out of Lewisham. It will result in the loss of at least 30 jobs. The architecture is unsympathetic and sits opposite a listed building and much loved conservation area. If it is built it will blight the area for decades. There are already 11 storage companies within a 2-mile radius, nobody in Lewisham needs another one. The first application was unanimously thrown out by Lewisham Councillors, but now Big Yellow are demanding a Public Inquiry and we need to make the Planning Inspectorate fully aware of local feeling by the 5th November.



Note: The application for signage would follow but all other Big Yellow's are yellow



If you do not want to see this monstrosity ruining the main street into our Borough and would like to see an alternative plan to save Lewisham Way and local jobs, then now is the time to object.

Googile: No to Yellowsham!
Sign online at: www.gopetition.co.uk/online/30189.html
Or write to: Brockley Society Campaigns, 45 Breakspears Road, London SE4 1XR

thoroughfare into London, but is this the best we can do?

An objection team led by the Brockley Society will be working with the Council and their legal team to ensure this development does not go through. BrocSoc would like as many people as possible to sign the petition at www.gopetition.co.uk/online/30189.html.

Armistice Remembrance

John McKiernan

Mark the passing of the last witnesses to the 1914-1918 Great War with an evening event on Armistice Day. The event will be a simple experience, sober rather than sombre, an opportunity to reflect and pay tribute. It will include music, poetry and readings.

A path will be lit with lanterns from Ladywell Gate to Brockley Road Gate, taking in the chapel and the memorials. Attendees may enter from either gate, and there will be no admission charge.

Brockley and Ladywell Cemeteries
Wednesday 11 November 2009
7.15 pm until 8.26 pm (1 hour and 11 minutes)

More information is available at www.brockleymax.co.uk

Park Grant Approved

There have been a few changes to the Hilly Fields Park User Group over the last few months.

You may have heard that the group were successful with the first stage of their Changing Places grant application to the Big Lottery. The Lottery required the group to comply with a few conditions before submitting their second stage application. First, they need to become a constituted group, so following their ad in "Lewisham Life", the group held their inaugural AGM. They took the opportunity to change their name to Friends of Hilly Fields.

Second, they needed to do some community engagement. On the rather windy 6th June, coinciding with the Brockley Max, they put up a gazebo and could be found in the playground getting feedback on the plans. The task of collating all the questionnaires got underway, and comments were fed back into the design and a revised cost plan was completed.

With all the signatures, supporting letters and paperwork in place, the second stage application was submitted in mid-August. They are delighted to announce that they have been successful with this application, and the lottery have confirmed a grant of £49,999.

The designs and costings have been passed on to the Landscape Architect at Groundwork London for progressing to tender stage. The current programme will have the scheme tendered before Christmas, with a possible start date by December. The planned completion will be around Easter 2010.

A class of year 2 children with some year 5s from Gordonbrock School have already been out in the park with their charcoal, drawing the flora and fauna. Their artwork is being used for the design of new gates to the playground.

Transition Town Brockley

Working Towards a Low-Carbon Future

Two of the activities Transition Town Brockley/Lewisham has successfully organised in the last couple of months, are promoting beekeeping with sessions given by a local beekeeper and showing films about sustainable food growing.

The group participated with other South London Transition Towns at the Urban Green Fair in Brockwell Park and assists with the Capital Growth vegetable plot at St Saviour's Church.

Tips on reducing our carbon footprint have been discussed and circulated, and future plans include:

- a fun swap-shop evening at Brockley Social Club with a band, DJ, magician and other surprises on a transitioning theme;
- meeting with Brockley residents in council-owned properties;
- film shows at Manor House Library as part of their Going Greener event;
- continuing to support the objectors to the Loampit Vale development;
- joining with the 9 Carrots group to encourage local businesses to become greener, and,
- for bee enthusiasts, a December 6 evening, showing of an Australian film about bees.

For more details, visit www.transitionlewisham.org.uk, or to get the latest news, subscribe to the group on transitionlewisham-subscribe@yahoo.co.uk.

Photo Memories of Hilly Fields Midsummer Fayre



Brockley Common Takes A Step Forward

By Stuart Woodin and Rupert King

Many puzzled and inconvenienced local people have asked us about the slow progress of the Brockley Common works throughout the summer:

While the Action Group is hugely relieved the steps and ramp are finally open, we have told the Council we are unhappy about their project management of the scheme, and the performance of their term contractor F. M. Conways Construction. The Action Group has been kept out of the information loop - we feel deliberately - and yet both Lewisham Highways and Conways have tried to suggest that some of the delays were down to the Action Group.

Apparently, our insistence on the use of high quality paving materials has been a problem for them, despite early assurances from Conways that they had all the necessary expertise to do this work. One of the real problems is that the Council failed to properly schedule and quantify all the paving materials necessary to do the scheme, resulting in some late additional orders being placed with the supplier. This contributed to the delays. As project managers, the Council were solely responsible for scheduling the

paving works.

To be fair to the Council, they did find a lot of asbestos under the site (despite a soil survey being undertaken!) and forked out an extra £150,000 to cart it away, thereby breaking the budget. This caused a huge delay and largely explains why we don't yet have the performance circle and the northern steps.

But, we will have a good quality planting scheme soon. Last month the Brockley Ward Assembly voted to recommend £7,848 from the Mayors fund, to which the Action Group will add £5,000 (raised via community donations) so we can put an imaginative planting scheme in where all the banks are. We will be organising a series of community planting events this winter and next spring, so watch out for posters - we will need lots of help!

This leaves the Group with the task of raising at least another £50,000 to complete the scheme. We would very much welcome help with this task and promise the good people of Brockley we will get there - eventually!

Brockley design architecture

Thomas Evans BA (hons)

Dip Arch MIH RIBA Associate Member

Architectural Design.
Contract Administration.
Architectural CAD Drawings.
Feasibility Studies.
Planning Application Services.
Conservation Advice.

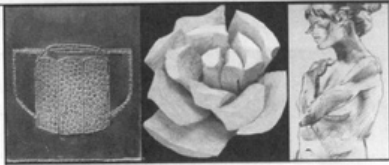
206 Tressillian Road Brockley SE4

tel: 020 8469 2848

mobile: 07730 944963

email: info@brockleydesign.co.uk

www.brockleydesign.co.uk



Lee Green Open Studios

Looking for that unique Christmas gift? For the 10th Year running 33 artists and craftspeople will be opening their studios and homes on 14/15 and 21/22 November Sat 12 - 7pm and Sun 12 - 6pm

For further details and locations of each artist pick up a leaflet from Stark Gallery 368 Lee High Road, You Don't Bring Me Flowers 15 Staplehurst Road or Hand Made Food 40 Tranquil Vale Blackheath or visit www.leegreenopenstudios.com

EXTRA VIRGIN OLIVE OIL

Direct from the finca (farm) in La Alpujarra, Granada, Spain.

£9 per litre £4.75 per 1/2 litre

- We use recycled bottles.
- Customers can also supply own bottle. Buy as much or as little as you like!

Tel: 0207-732-0388

Email: Fabulousfinds@hotmail.com

La Alpujarra

'a land filled with olive trees and an abundance of colourful wild flowers and plants'.



The Brockley Foxes Go Hunting For Their Dinner

The Brockley Foxes continue to sample local eateries and wineries. They were very sorry to note the demise of the very promising "Aquarium". The Foxes reported enjoying their meal there in the last newsletter and had heard some good reports about it from others too. There are few enough restaurants in Brockley serving quality food, and this one was just becoming established when some horror must have struck.

The Foxes have also noticed that "La Laterna", an established local (although not loved by the Foxes) has closed for refurbishment with no signs of any work going on or re-opening. Meanwhile, the Vietnamese restaurant "Love you long time" on Coulgate Street, closed for a while but has now re-opened. It has yet to be sampled again. Also gone is the "Brockley Kitchen" with a reward being offered for news of the previous proprietor according

to the note in the window.

This spring, the Foxes decided to revisit an old favourite, Mr Lawrence's Wine Bar on Brockley Road. For the past year or two, he has only been serving soup and platters, filling but not enough to constitute a whole meal. They have recently re-introduced hot food, though only one dish, cassoulet, meat or vegetarian. The Foxes began with a mixed starter, a bon bouche platter of Spanish style starters with lovely fat green olives. One Fox had the veggie cassoulet whilst the rest tucked into the meaty version. The vegetarian version was tasty with lots of vegetables and pleasantly spicy, whilst the traditional meat recipe seemed a little thin, but there were plenty of beans, chorizo and chunks of duck. The portions were generous, but as both the starter and mains were all served with (albeit delicious), bread, we were beginning to feel a bit bloated by the end. The wine was good value with plenty of choice (it is a wine bar after all), our favourite being the very drinkable 2006 Gaillac. There was a good range of organic wine at reasonable prices too.

The ambience suited the Foxes' mellow years. The background music was suitably muted and the atmosphere is so much more pleasant now that there is no smoking inside. This is an old established local and it is good to have it back on the evening eating list. The Foxes would be enticed back sooner if there was a choice of mains or a different dish each day.

The next local venture was to Honor Oak, which is near the edge of the Foxes' roaming range. We went to the Old Bank, an Italian restaurant, which has been open for several years. Its general reputation seems to be of good food but slow service. We walked into a pleasantly decorated restaurant which was a good reuse of the old bank. There was a blackboard of specials, which were all off but the waiter reeled off a list of replacement dishes. By the time he came back to take the order we had forgotten some of them and had to have them repeated. When our starters arrived, we had mixed opinions. The spicy chicken crostini was spicy and tasty but not a very satisfying texture. The calamari was good and the asparagus was a pleasant flavour if rather oily, and there was no bread to mop up the juices. Sadly, the main courses were disappointing. The meats (guinea fowl, liver and belly pork), were overcooked; perhaps they had been kept warm during the unusually long gap between courses. The pork belly, in particular, was very dry and chewy. Although the flavour was good, the prawn linguini only had three prawns in it - a few more would not break the bank! We were advised that we would need side orders of vegetables, but some dishes came with an adequate supply of vegetables, whilst others did not. The wine was acceptable though a bit overpriced. It was such a long time



BEAUTY REIGNS

Be treated like Royalty

Beauty treatments carried out in the comfort of your own home. Services include facials, waxing, manicure, pedicure and nail enhancements that do not harm your natural nail or have harmful choking fumes. Ask about our Beau-Tea Parties! Also, get 10% off treatments with this advert.

Please call Mercedes on

07905 183 376 or

email: appointments@beautyreigns.co.uk

www.beautyreigns.co.uk

Superb Guest House in Heart of Brockley

**St James's Guest House,
48 Breakspears Road,
Brockley, London SE4 1UL**

Tel: 020 8691 1206

Fax: 020 8691 0150

Mobile: 07956 403692

email: mail@sjguesthouse.co.uk

Website: www.sjguesthouse.co.uk

- Family run business
- Warm, friendly and homely atmosphere
- Strictly "No Smoking"
- Prices are very reasonable
- Free transport on arrival and departure to local stations

THE HOLLY TREE

Flowers for all occasions

Wedding Flowers - Hand Ties
Funeral Tributes - Bouquets
Floral Displays - Arrangements
Restaurants and functions

call: Lynn Neale

Tel: 020 8690 1697

Mobile: 07941 541 491



PLUMBWISE

General Plumbing & Maintenance
Central Heating and Bathroom Installations
Fitted Kitchens

- Toilets
- Sinks
- Taps
- Ball Valves
- Cylinders
- Guttering
- Radiators

Steve Neale

020 8690 1697

Mobile: 07939 411 957

(No job too small - free estimates)

Small Building Works + Tiling
Washing Machines/Dishwashers Installed



BROCKLEY SOCIETY

BARBECUE



The Society owns a very large and splendid barbecue.

You can hire it for the modest fee of £15-20 for the weekend.

Contact Bob on 8692 2289

before the dessert menu was offered that we decided to call it a day and return home for coffee and digestifs.

The Foxes did go on a big adventure at the beginning of May, perhaps it was due to the advent of spring, but we went to the far side of the river. We took the DLR from Lewisham and went to Limehouse to sample the cuisine of the famous Gordon Ramsay. The Narrow was about a 15 minute train ride from Lewisham, with return trains well into the early hours. We found the gastropub very noisy, which made conversation across the table very difficult unless we shouted. The starters were small. The main courses were well cooked, but no one had advised us that they had very little in the way of trimmings and that we should order vegetables. Some Foxes drank real ale and others drank wine. When we asked we were told that the food was all cooked on the premises; however, we now learn from the papers that much of the food in Ramsey's gastropubs is prepared somewhere in south east London. At an average of £37 per head, we felt it was overpriced and that south of the river is usually better value.

Stray Fox

One of the Foxes has been known to make lone forays into the local culinary environment. One such trip was to the Ladywell Tavern, which had opened with such promise on Fayre Day last year. The chef did not last long and did the full kitchen ever really open? Sadly the menu is now uninspiring. A bowl of chips or a mixed salad of mainly iceberg lettuce as starter? They need to rethink the menu and get back to the previous quality of cooking.

The Phoenix restaurant at Lewisham College is the hidden jewel on Brockley's gastronomic map. Tucked away in the middle of the Breakspears building, it serves lunches from 12 to 1.30 from Tuesdays to Fridays, term time only. The prices vary according to the experience of the chefs, though even on Friday (year 3's cooking day) main courses only rise to £7.50. It is advisable to phone first (020 86943294) in case there is a special event. Entry is via the main college entrance on Lewisham Way.

The recently re-furbished Brockley Jack, however, continues to be very popular, and when two Stray Foxes were there last week, the proprietor had to close the kitchen for a while so that they could catch up with orders. The place was packed but fortunately the Stray Foxes and their mates were able to order after a short interval but could only get a main course.

2009 A Champion Year At Hilly Fields Bowls Club

Guest bowls correspondent Eamonn Miss reports on the goings on behind the hedge

It's been a 'champion' year atop Hilly Fields at Francis Drake Bowls Club!

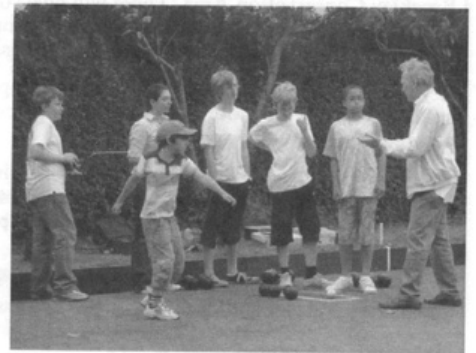
Incoming captain Mick Singer hit the ground running (or perhaps one should say 'released an inch perfect milky draw shot') and led our local sporting heroes for the first time in the club's 103-year history, to championship victory in The John Collyer League, fought out all season by six other crack(pot) bowls clubs from the boroughs of Lewisham, Southwark and Lambeth.

Mike also led The Drakes to the final of the Ronnie Hams Trophy, where we went down (smiling) to the mighty Southwark Sports whilst, on a personal level, he retained his hold of the FDBC Men's Singles championship.

Furthermore, Mick's wife, Jeanette Singer (one of the club's two EBA accredited bowls coaches) scooped what is believed a historic 'triple', winning all three of the club's Ladies' Singles championships! Also perhaps the first time a husband and wife have ever both been club champions in the same year!

Other news to report from the 2009 season:

- Before the season started, the Council kindly re-laid the footpath from the gate to the club house and a Glendale team, led by the ubiquitous Fred Baverstock, redecorated the club house veranda. To match that, a hard working band of club members completely redecorated internally.
- Coach Jeanette linked up with the Brockley Max festival, offering free bowls taster sessions to the public.
- Casual bowlers from 8 to 92 (+ a spectator who is not yet quite walking!) have joined members for regular weekday afternoon and evening club roll-ups/trundles as well as many Sunday mornings, some of which have included fresh coffee and other delights!
- A Fun Day challenged the bowling skills of young and not so young, experienced bowlers and beginners as players bowled left handed, put the jack up last and tried to find the holes in the wedge and the centre of the target mat. The Fun Day also produced some good laughs!
- A Pink Pairs one day competition was held, raising £130 for the Breakthrough Breast Cancer Charity (bowlers not wearing pink items paid a charity forfeit, and all the buffet food was pink).
- The funeral of former captain Richard Tritton, who kindly sponsored our magnificent gate, took place in August both at Hither Green Crematorium (where bowls



Coach Billy instructs the stars of tomorrow.

were played down the aisle) followed by a slightly merry champagne fuelled 'Richard's Last Roll Up' for 80+ folks on the green. The latter event raised £320 for St. Christopher's Hospice. Sadly, this season the club also said farewell to Don Thurnell, a long time secretary and member of the club and Bill Perrin (who was still bowling at 92).

- A number of men continue to enter Kent County competitions. Whilst no trophies have been won this year, participating in these events provides valuable bowling experience and continues to help raise the profile of Brockley and Francis Drake BC.

Captain Mick led an intrepid gang of Drakes to The Tower of London to play in the moat against the beefeaters, an honour normally only allocated to 'posh blazered Bufton Tufton bowls clubs'. Sadly, heavy rain forced a cancellation so a merry time was spent in the bar!

- Media-wise, the club had a fine article in September's Lewisham Life, are featured in the front of the new edition of our local Yellow Pages, and member and Montague Avenue resident Tim Deacon launched www.brockleybowls.org.uk, a fun 'naughty little sister' website to the club's 'official site' at www.francisdrake.org/

- And the season ended with the exciting news that the club received overwhelming support from the Ladywell Assembly in its submission to the Mayor's fund to pay for a watering system for the green. Final approval is hoped to be granted in November and, if successful, will help to ensure that the green can be enjoyed by local folks and visiting teams for many more years to come!

With the outdoor season now at an end, anyone requiring details of Lewisham Indoor Bowls Club, including free coaching, please contact Mick or Jeanette on 020 8291 9243.

Brockley Hosts Exchange Group

Brockley hosted volunteers from the VSO/British Council exchange programme this summer. The group consisted of four young people from each of Nigeria, Senegal, Uganda, Tanzania, Sudan and the UK. Participants spent three months on a volunteer programme in Southwark, living with host families in south London, before going to northern Nigeria, for three months. The picture shows the whole group at a BBQ with their London hosts and friends. If you want to know more, email jess.kopp@vso.org.



Picture: Richard Shaw

PLANNING APPLICATIONS

Before you start making decisions on any changes to your property, we strongly advise that you look at the Council's guidelines for preserving the Brockley Conservation Area. These will give you a good idea of what is acceptable development:
<http://www.lewisham.gov.uk/Environment/Planning/ConservationAndUrbanDesign/ConservationAreas/Brockley/AlteringBuildingsBrockley.htm>

If you would like to object to plans for unsympathetic or inappropriate development, please advise the Brockley Society. The more objections the council receives, the more likely the development is to be questioned. If you would like to support something, again, let us know – community pressure does actually work!

Every other week, the Brockley Society joins the other local conservation societies at the Council's Amenity Panel Meeting. Here we raise formal objections, ask questions, and give our input on local development. These meetings help to determine whether planning applications are approved or go on to be raised at the public planning meetings. The public meetings give applicants and objectors a chance to have their say to enable the Council to reach a decision.

If you would like to get involved in preserving the character of Brockley or for further guidance on planning issues, including making an application, raising an objection, or the processes involved, contact Danny on 07904 508 678.

Applications Granted

Lawful Development Certificate for the provision of a vehicular crossover at **1 Drake Rd.** *418 - 2819*
The demolition of the existing building of W. P. Stone Ltd, adjacent to **1 Tyrwhitt Rd** (also known as **2a Pretoria Parade**) and the construction of a three storey building, plus basement and roof space, comprising 6, two bedroom, self-contained flats and 2, two bedroom, self-contained maisonettes, together with associated landscaping and provision of refuse/cycle stores and a car parking space.
The retention of a 2.5 metre boundary wall at the rear of **165 Breakspears Rd**
The installation of replacement timber double glazed sliding sash style windows in the front and rear elevations together with timber double glazed external rear doors at **15A-C Manor Ave.**
The installation of replacement double glazed sliding sash style timber windows in the front elevation, double glazed sliding sash and casement style timber windows in the rear elevation together with double glazed external timber rear doors at **95A, B & C Upper Brockley Rd.**
The installation of replacement timber double glazed sliding sash and casement windows together with timber double glazed external rear doors at **31A, B & C, 33A, B & C Manor Ave.**
The installation of replacement timber double glazed sliding sash style windows in the front elevation, timber double glazed sliding sash and casement windows in the rear and flank elevations together with timber double glazed external rear doors at **93A, B & C Tyrwhitt Rd.**

The installation of replacement double-glazed timber sash and casement windows and doors at **Flats 1-4, 69 Tyrwhitt Rd.**
The installation of replacement double glazed timber sash and casement windows and doors at **Flats A & B, 78 Adelaide Ave.**
The replacement of the existing roof covering, with Eternit Rivendale fibre cement slates to **Flats A & B, 76 Adelaide Ave.**
The installation of replacement timber sash windows to the front elevation of **12 Harefield Rd.**
The installation of two replacement double glazed, PVCu casement windows at ground floor level to the rear of **90-92 Tressillian Rd.**
The installation of replacement aluminium double glazed casement windows to the front elevation of **125 Breakspears Rd.**
The construction of a part single/part two storey, two bedroom house with studio at **10-12 Garsington Mews** (rear of **41 Wickham Rd**), together with the provision of a bin store and car parking space. Committee
The construction of a replacement dormer window in the rear roofslope of **66 Geoffrey Rd.**
The retention of children's play equipment and a single storey garden building (smoking shed) to the rear of the **Wickham Arms, 69 Upper Brockley Rd.**
The construction of a new boundary wall, gates and pillars at the front of **78 Tressillian Rd.**
The construction of a single storey extension at the rear, together with the installation of PVCu replacement

windows in the side and rear elevations of **42a Rokeby Rd.**
Alterations and construction of a two storey extension at basement and ground floor levels at the rear of **2 Drake Rd.** including the excavation of a full basement to provide an additional two bedroom self-contained flat and additional living space to the existing ground floor flat, together with the formation of a lightwell to the front and an external staircase to the rear garden from the ground floor flat.
The installation of timber framed double glazed windows and door in the front and rear elevations of **Flat 3, 62 Wickham Rd.**
The installation of a mini-dish on the rear chimney stack of **26 Tyrwhitt Rd.**
The demolition of the existing conservatory and construction of a single-storey extension to the rear of **104 Tressillian Rd.**
The installation of replacement double glazed timber sash windows to the front, side and rear elevations at **96 Tyrwhitt Rd.** and a timber casement window to the side.
The construction of a single storey extension at lower ground floor level to the rear of **55b Manor Ave.** together with the reinstatement of railings to the front boundary wall.
The construction of a single storey infill extension at Myatt Gardens Primary School, **Rokeby Rd.** between the upper school and the music building, adjacent to **Upper Brockley Rd.** *P/M 10/3 - 26/5.*

Trees

Cut to ground level a Pawlownia Tomentosa and a Sycamore tree at **94 Tyrwhitt Rd.**
Remove a Pear tree, a Holly, two Apple trees and a Spruce tree from the front of **111 Upper Brockley Rd.**
Pollard to original points and remove epicormic growth from two Lime trees at the rear of **38 Tyrwhitt Rd.**
Fell a Magnolia and an Apple tree; prune and reshape a Pear, crown reduce, crown thin and reshape a second Apple tree all in the rear garden. Crown reduce by 50%, crown lift by 1m and reshape a Holly tree to the front of **14 Darling Rd.**
Fell a dead tree, cut back by 1-2m a Holm Oak in the adjacent garden and crown reduce by 30% and shape a Sycamore tree to the rear of **2 Avon Rd.**
Crown reduce by 25% and crown lift to 6m a Sycamore tree to the rear of **145 Breakspears Rd.**
Retrospective application to repollard two Lime trees T1 and T2 to the front of **41 Breakspears Rd.**
Crown reduce by 30% and crown lift to 6m a Sycamore tree to the front; crown reduce by 40% a Laburnum, crown reduce by 30% and crown lift to 6m a Sycamore tree both to the rear of **93 Tyrwhitt Rd.**
Fell a Sycamore tree at the rear of **120 Upper Brockley Rd.**
Fell a Sycamore tree and reduce height by 25% and reshape a Leyland Cypress tree to the rear of **38 Manor Ave.**

Reduce and reshape crown by 30% a Pittosporum; remove lower limbs growing over adjacent properties and shed from a Eucalyptus tree to the rear of **34 Rokeby Rd.**
Fell a Conifer tree in the front garden at **38A St Margarets Rd.**
Cut back to new fence line to clear adjacent property a Chestnut and a Sycamore tree: remove epicormic growth and cut back to fence line a Lime tree, all at **St Peter's Court, Wickham Rd.**
Crown reduce by 50% a Sycamore tree adjacent to the boundary wall at **78 Upper Brockley Rd.**
Fell a Lime tree to the rear of **73 Manor Ave.**
Fell a Sycamore tree to the rear of **20 Upper Brockley Rd.**
Fell a Sycamore tree at the rear of **13A Wickham Gardens.**
Fell a Eucalyptus tree to the rear of **91a Tressillian Rd.**
Remove an Ash and an Elder tree and epicormic growth from two Lime trees at **38 Tyrwhitt Rd.**
Fell two Sycamore trees at the rear of **165 Breakspears Rd.**
Crown reduce by 30% two Plum trees and two Lime trees to the rear of **169 Breakspears Rd.**
Fell a Conifer tree to the rear of **9 Chalsey Rd.**
Reduce and reshape crown by up to 35%, crown thin by 20% and crown lift to 6m an Ash tree in the rear garden

at **37 Breakspears Rd.**
Fell a Laurel and reduce by 50% a second Laurel to the rear of **122 Tressillian Rd.**
Fell three fire damaged Sycamore trees to the rear of **98 Manor Ave.**
Repollard a London Plane tree to the rear of **84 Wickham Rd.**
Repollard a Lime tree at the rear of **82 Wickham Rd.**
Crown reduce by 30% and thin by 10-15% two Sycamore trees in the rear garden at **99 Manor Ave.**
Fell five Sycamore and one Robinia tree; remove basal growth from a further smaller sixth Sycamore tree, all to the rear of **40 Tressillian Rd.**
Fell an Apple tree to the rear of **102 Tressillian Rd.**
Fell an Ash tree to the rear of **14 Avon Rd.**
Fell a small Sycamore tree and a decaying Hawthorn; crown lift to 3m and prune a second small Sycamore tree, crown lift to 5m, remove dead wood and crown thin 4 Lime trees, all to the rear of **87 Tyrwhitt Rd.**
Fell a Silver Birch tree to the rear of **123 Breakspears Rd.**
Reduce back to old pollard points a Sycamore tree at **531/2 Tressillian Rd.**
Fell or crown reduce and crown thin a Sycamore tree to the rear of **47 Wickham Rd.**

Applications Refused

The demolition of industrial units 1, 2, 3, 4, 5, 9, & 10 on the site of **155 Lewisham Way** and the construction of a four storey, plus basement, self storage warehouse (Use Class B8) with reception area fronting Lewisham Way, together with the provision of 21 car parking spaces and 8 bicycle spaces at the rear of the site,

associated landscaping and boundary treatment works and associated works.
The construction of a roof extension to the rear roofslope at **35c Breakspears Rd.** together with the installation of rooflights in the front and side roof slopes, to provide additional living accommodation.

The construction of a two storey building plus roof space at **8b Hilly Fields Crescent** comprising 1 one bedroom, 1 three bedroom and 3 two bedroom self-contained flats with refuse store, communal cycle storage shed and a car parking space in the front garden.

Pending

The demolition of the boundary wall at **62 Wickham Rd** and the construction of a 1.8m boundary wall.
The erection of a low rise brick garden wall to the front

boundary at **2 Montague Ave.** together with replacement of the garden path.
The construction of a single storey double garage and a

single storey storage building on land at the rear of **42 Wickham Rd.** with access from Wickham Mews.

CHERRYLI NURSERY

Looking for a nursery?

Comfortable and homely baby unit for babies 6 months and up

Nursery places for children aged 2 to 5 years
Come and see us at Cherryli

We are an independent nursery, owned and managed by a qualified teacher. We have a small, committed team of staff who will care for your child in a creative, homely environment.

www.cherrylinursery.co.uk

- Caring, friendly staff
- Structured, stimulating environment
- Fresh, home-cooked food
- Beautiful hand-crafted wooden interior
- Reasonable prices
- Variety of structured activities and free play
- Childcare vouchers accepted
- Large secure garden with play area

40 TYRWHITT ROAD
LONDON SE4 1QG

Walking distance from St John's BR station
and bus routes 21, 436, 136 & 321

Open weekdays 8am to 6pm

We will be happy to show you around any time

020 8691 0497



Local Tradesman

Fully Insured
Carpentry and Joinery
Building and Maintenance

- * Fitting kitchens and bathrooms *
- Painting and decorating *
- Laying wooden, laminate and tile floors *
- Mosaic floors *
- Repairing and replacing sash windows *
- Fitting doors and windows *
- Plastering *
- Replacing ceilings *
- Tiling *
- Garden decking

Mr S Goodison
07963 897 802
020 8692 0260

Brockley Social Club

240 Brockley Road, SE4 2SU

FUNCTION ROOMS FOR HIRE

Birthday parties

Meetings and Seminars

Funerals Christenings,

Engagements

Weddings, Anniversaries

We also have catering available

For more details please call

020 8692 3264



CATS @ HOME

Formerly Pet and Plant Nannies, established 1986

We care for your cats in the comfort and security of their own home during your absence. We provide a reliable, trusted and confidential service recommended by Veterinary Surgeons and endorsed by our many satisfied clients. References are available and we are fully insured.

House plants watered too

Please contact Viv Hutter on 020 8692 0023 or email:
viv@cats-at-home.com or visit our website, www.cats-at-home.com
to discuss your and your cat's requirements.

Brockley Society archives

Home needed for a filing
cabinet with priceless
archives, photos etc.

If you have room, or if
you're able to help with
some sorting, please ring
Gillian on

07903 150 099

CLASSICAL OSTEOPATH

NEIL FENNEL mico.do

Helping in SE4 since 1992
osteopathy, cranial, reiki, reflexology

Home visits available

07791 681 237

Folk & Pop Guitar Lessons

Individual lessons available
from £16 per hour

Acoustic Guitar Courses
Beginners or Improvers course £65

Jacqueline Grant 020 8694 1409

Shiatsu

Michael Woolley MRSS

17 years' experience successfully helping with
back, neck and shoulder problems, RSI, headaches and migraines,
menstrual problems, fatigue and stress.

Brockley Practice
and
Home Visits

Tel: 07941 551356

shiatsu@michaelwoolley.com www.michaelwoolley.com

Painting and Decorating

Paper Hanging &
Period Feature Renovation

For a Professional and Courteous Service call

Ian Hibbert

020 8690 5624

07770 753 177

Free quotations & advice
References available

e: ian.hibbert@btconnect.com

Kitchen and bathroom refurbishment - design to completion

Now also specialising in granite worktops
- unbeatable prices

Central Heating - Extensions - Plumbing and Electric
Carpentry - Plastering - Decorating - Tiling

No call-out charge - Free estimates
Local references available - All work guaranteed
40 years' experience

Len Bintcliffe

Tel 07976 579 721 020 8331 0776

Rosie Riley



PLUMBER

Handywoman

20 Years Experience

Tel: 020 8692 3375

Mobile: 07932 566 039

FREE ESTIMATES

New Cross Natural Therapy Centre

where experienced practitioners offer different ways

to support your health and well being

Acupuncture, Aromathrapy
Chiropractic, Counselling
and Psychotherapy, Reiki
Craniosacral Therapy, Shiatsu
Massage, Homeopathy
Thai Yoga Massage
Physiotherapy



Hypnotherapy, Nutritional
Therapy, Osteopathy, Hopi
Ear Candling, Reflexology,
Indian Head Massage
Alexander Technique
Thai Foot Massage
Orthobionomy

Established 1985

newxtherapy@btconnect.com

www.newcrossnaturaltherapy.com

394 New Cross Road SE14 Tel : 020 8469 0858

The Sunflower Centre

Complementary Health and Lifestyle

Osteopathy, Massage Therapy,
Fully equipped Pilates Studio,
Acupuncture, Homeopathy,
Yoga and Pilates, Reiki,
Counselling and Medical Herbalism,
Hypnobirthing & Antenatal classes

All therapists can help a variety of acute
and long-term problems. We aim to provide
family health care from birth into old age.

- all types of aches and pains
 - general wellbeing ● stress and anxiety
 - skin, hormonal and digestive problems
 - ante and postnatal care; newborn check-ups
- Full disabled access and facilities

81 Tressillian Road, Hilly Fields
Brockley SE4 1XZ 020 8694 2714

www.thesunflowercentre.co.uk

I ♥ THE SHOP ON THE HILL

YOUR LOCAL FRIENDLY WHOLEFOOD STORE ♥

- ♥ Organic seasonal & local fruit & veg
- ♥ Eco clean refills ♥ Food refills (nuts, seeds, cereals, rice etc...)
- ♥ Oil refills
- ♥ Gluten/wheat & dairy free ♥ Vitamins
- ♥ Natural hair & beauty ♥ Infant Care
- ♥ Baking goods ♥ Artisan bakery bread
- ♥ RAW & Everyday healthstore grocery items...

Opening times:

Mon-Fri 10-1.30/2.30-8
Sat 9.30 to 6.30
Sun 11 to 5

7A Harefield Rd
Brockley
SE4 1LW

0208 692 2175

theshoponthehill@hotmail.com

Come & get fresh...



Website Design

call Sara on

07931 567 259

www.webble.co.uk

C.J. Property Maintenance & Repairs .

Builder, Carpenter,
Painting & Decorating,
Restoration work
- Home Improvements
Comprehensive Fitted
Kitchen Services.
Landscape Gardening,
Walls, Fencing, Patios,
Paths & Ponds etc.

Exterior painting and repointing,
Insurance work undertaken
Please ring Colin Brooks for
free advice & estimates on

Tel: 020 8699 9030

Mobile: 07799 794 685

Personal Tutor Physics, Mathematics

- Oxbridge, Medical School entry
- GCE A level & A/S Physics GCSE Mathematics
- Individual learning schedule
- Diagnostic assessment, Examination technique
- Revision & Intensive study
- Medical Physics a specialism

Dr Jim Kelly FRAS

BSc(Hons) MSc PhD CertEd CPhys MInstP

Mobile: 07745 448 137

e-mail: jfk@physics.org

www.Alevel-physics-tutoring.vpweb.co.uk

Registered with A+ Tutors

Tel: 020 8305 6571

Ockham's razor

"Non sunt multiplicanda entia praeter necessitatem..."

Guide to answering Physics problems:

- Read the question; re-read the question
- Draw a diagram, List the variables incl. ?
- Write down numerical values + Units !
- Find appropriate equation & re-arrange
- Substitute & solve for answer, Think ...
- CHECK Answer: Number + Unit



Alexander Technique

Individual lessons, introductory workshops

Michelle Cole (MSTAT)

020 8690 0801

079 4003 3728

m.cole@gooduse.com www.gooduse.com

ADVERTISEMENTS

Small	3.6cm x 6cm	£15
Medium	7.5cm x 6cm	£25
Large	12.4cm x 7.6cm	£40

READERSHIP 8000

To advertise, email clare@summer-type.co.uk
or phone Clare on 020 8692 3829.

All ads must be prepaid.

Cheques to Brockley Society, 76 Tyrwhitt Road, SE4 1QB.