

# BROCKLEY SOCIETY



Issue 115 March 2009  
Charity No: 1004245

Delivered free to 4000 households in Brockley Conservation Area  
three times a year: March, June and November

## BROCKLEY SOCIETY

### Brockley Society Open Meeting

Tuesday 17 March, 8pm  
Brockley Social Club  
240 Brockley Road, SE4 2SU  
(*cnr Foxberry Road, next to Esso garage*)

- Transition Towns - see p5
- Brockley PFI speakers invited  
(*see website for confirmation*)

All welcome

### Hilly Fields Midsummer Fayre

Saturday 20 June, 12 noon to 5pm

### Brockley Barbecue

Friday 3 July, 7.30pm  
Stone Circle, Hilly Fields

### Brockley Society Open Meeting

Tuesday 14 July 8pm  
Brockley Social Club

### Brockley Society AGM

Tuesday 10 November 2009  
Brockley Social Club

### Copy deadlines for newsletter:

1 February, 1 May, 1 October  
to [clare@sumner-type.co.uk](mailto:clare@sumner-type.co.uk)

If you have ideas about the newsletter or would like to contribute, please email us (see below)

### Farmers' Markets on Hilly Fields

Second Saturday of each month 10am-3pm

### Brockley Cross Action Group AGM

17 March, 7.15pm

St Andrews Church, Wickham Road, SE4

### Telegraph Hill Festival 2009

March 13th to 22nd

Festival details see: [www.telegraphhillfestival.org.uk](http://www.telegraphhillfestival.org.uk)

## BROCKLEY SOCIETY

[www.brockley.com/brocsoc/](http://www.brockley.com/brocsoc/)

Chair ..... 8692 5027  
[prbyrne@clara.co.uk](mailto:prbyrne@clara.co.uk)  
Fayre (general) [www.brockley.com/brocsoc/](http://www.brockley.com/brocsoc/)  
Fayre (stall details) ..... 07758 464 195  
Newsletter ..... 07530 799 737  
[BrocSocNews@yahoo.co.uk](mailto:BrocSocNews@yahoo.co.uk)  
Newsletter advertising ..... 8692 3829  
[clare@sumner-type.co.uk](mailto:clare@sumner-type.co.uk)  
Police liaison .....  
Transport ..... 8691 1463  
Local history ..... 8693 1863  
[fonemefirst@talktalk.net](mailto:fonemefirst@talktalk.net)  
Planning & highways .... 07904 508 678  
[fonemefirst@talktalk.net](mailto:fonemefirst@talktalk.net)

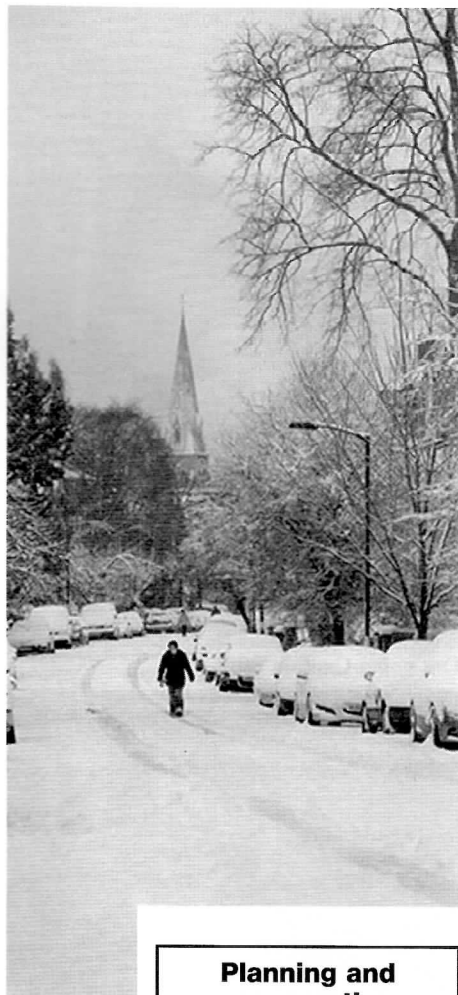
Everyone living in the Brockley Conservation area is automatically a member of the Brockley Society. The Brockley Society welcomes all.

## Snow!

Everyone will remember Snow Monday, 2 February. As the pictures show, Brockley was transformed. With cars snowed in, it must have been the quietest day for 18 years - when the last major snowfall happened. Hilly Fields' toboggan slopes rang with cries of exhilaration and laughter usually associated with a swimming pool as children of all ages careered downhill. Large numbers of people were out walking, and everybody talked to each other, even to complete strangers, exchanging comments, advice and wonder. A memorable day.



Pictures: Annies Sturdee



### Hilly Fields Midsummer Fayre

Saturday 20 June 2009 - 12 noon to 5pm

This is Brockley's central event - and enormous fun. Join the team to make it another successful day! We still need an overall coordinator for the large number of people who run the Fayre each year. If you would like to take on this role, or if you just wish to help, please contact Clare on 020 8692 3829

For all stall enquiries, see  
Brockley Society website  
[www.brockley.com/brocsoc/](http://www.brockley.com/brocsoc/)  
or ring 07758 464 195

### Planning and regeneration

We need to increase the team of people participating in BrocSoc planning campaigns to help prevent unacceptable development in the conservation area.

For more details or to join our team contact  
Kate on 07930 181 174

See also the Lewisham  
Local Development  
Framework - p 6

## A new season for an old bowls club on Hilly Fields

Although our club is over 100 years old, there is a whiff of the 'new' about it this coming season.

During the winter, club members have been busy redecorating the interior of the clubhouse. To complement this, Glendale, the park maintenance service, have agreed to spruce up our veranda and lay a much needed new path. Also, the family of a late member have kindly donated a bench to the club in his memory.

And - we have a new club captain. Due to burgeoning work commitments Billy Jenkins, Captain from 2005 to 2008, has stood down, making way for Michael Singer to step up to the helm.

We are always ready to welcome visitors to our club - to watch a match, to enjoy the peace or, if you want to, have a go yourself. If you get hooked, you can become a club member and add to that whiff of the 'new'.

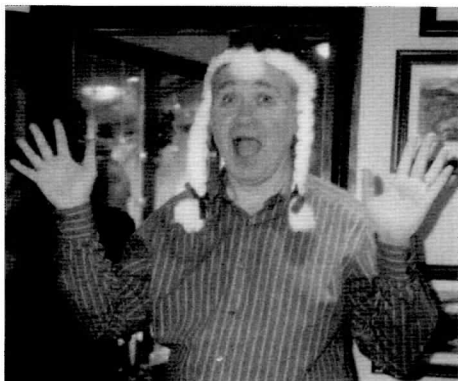
**Our coaches, Billy and Jeanette will again be offering free taster bowls sessions on Sunday 3 and Sunday 10 May, from 10am to 12 noon.**

If you are interested contact Billy on 020 8691 8926, email: [billyjenkins@piemail.co.uk](mailto:billyjenkins@piemail.co.uk), or Jeanette on 020 8291 9243, email: [jeanettesinger@onetel.com](mailto:jeanettesinger@onetel.com).

*Jill Jenkins, Club Secretary*



**Out-going Captain Billy**



**In-coming Captain Mick**

### BROCKLEY SOCIETY

## BARBECUE



The Society owns a very large and splendid barbecue.

You can hire it for the modest fee of £15-20 for the weekend.

Contact Bob on 8692 2289

## Save Brockley's Green Corridor

*Residents of Aspinall Road are asking for help.*

We are campaigning for Network Rail to replant mature native trees on the embankment at the back of our houses (one of Lewisham's green corridors) as they have devastated our local area (Avignon/Aspinall) by cutting down every single tree/plant on the railway embankment. Please see [www.ipetitions.com/petition/NetworkRail](http://www.ipetitions.com/petition/NetworkRail) or the post on Brockley Central, <http://brockleycentral.blogspot.com>  
The pictures show before and after



• In 2002 the same thing happened on the Nunhead to Lewisham line through the conservation area. Brockley Society was involved in pressing Railtrack Southern to replant native trees to repair the devastation.

*Stuart Woodin of Geoffrey Road comments:*

Once again ribbons of communities are having to go through the pain of their green corridors being made bare. Councils like Lewisham need to offer stronger advocacy for replanting budgets and care for new saplings. In Brockley replanting along parts of the South facing embankments did not take which allows bindweed, bramble and sycamores to return. The key is to maintain biodiversity - including the preciousness of privacy for us humans in this busy city.

## Broc Soc 2008 Panto Trip

The Brockley Society panto trip in December has never been so popular, with tickets selling out in just a few days!

Broc Soc generously supports this annual outing for kids in the Brockley area to get hold of cheap panto tickets. We went to Greenwich Theatre to see Jack and the Beanstalk. Eva, 7, from Drake Road, said: 'It was great. I sat near a friend I hadn't seen for ages and the pantomime was fantastic!'

For this year's panto trip book early to avoid disappointment!

## Wild about Play

Hilly Fields Park User Group's 'Wild about Play' project has moved a few steps closer to becoming a reality. The first stage application to Changing Places lottery fund has been given a development grant to enable a site survey and a community engagement event.

We hope the Stage 2 application will be ready to submit by early summer. Plans were given an added boost when we heard our case for central government's Playbuilder money had been accepted, with an award of £75,000 to be spent in the coming financial year.

We intend to create a more natural play space on the triangular sloping site with an integrated, more traditional playground on the upper site, reusing existing equipment where possible.

### Key aims for Wild About Play:

- Introduce landscape features from the park, e.g. meadow and native planting, into the play area.
- Create a space that changes with the seasons, where children are close to nature
- Improve the biodiversity while encouraging close contact with nature as part of the play experience.
- Extend the use of playground to all age groups, particularly toddlers and the over 8s, creating a setting that allows children of all ages and abilities to play together.
- Create inclusive play experience, welcoming for all children and their carers and parents.
- Develop the sloping site with natural features and integrated equipment e.g. bridges, stepping logs, sand and water play etc.
- Work with local schools, including the special schools, to make artwork for use in the area, possibly based on wildlife in the park.
- Include local schools and environmental education staff at Lewisham Council to discuss planting and undertake community planting projects for area.
- Provide a flexible space: storydeck/ platform/ stage for nursery groups or classes to use.

We will put a piece about the playground on our new website, thanks to Chris Wheal. Visit [www.hilly.org.uk](http://www.hilly.org.uk)

*Rachel Mooney*

## Brockley Max 2009

The dates for this year's Brockley Max are Friday 29 May-Saturday 6 June. If you would like to take part, please have a look at the Policy document on the festival's ethos. This year the festival is being organised through Tea Leaf Arts, so thanks to Sian and Rebecca.

Policy Document [http://docs.google.com/Doc?id=d5pr6db\\_0gt8tn5](http://docs.google.com/Doc?id=d5pr6db_0gt8tn5)

If you would like to hold an event please download and complete the event form and email it to me. Event Form [http://docs.google.com/Doc?id=d5pr6db\\_1g77v9p](http://docs.google.com/Doc?id=d5pr6db_1g77v9p)

List of venues [http://docs.google.com/Doc?id=d5pr6db\\_2hqxttg](http://docs.google.com/Doc?id=d5pr6db_2hqxttg)

If you are not an artist, but would like to help, get in touch! There are loads of things that need doing.

*Hope to hear from you all Moira Tait*

# Midwinter Warmer for Brockley's senior citizens at Brockley Social Club

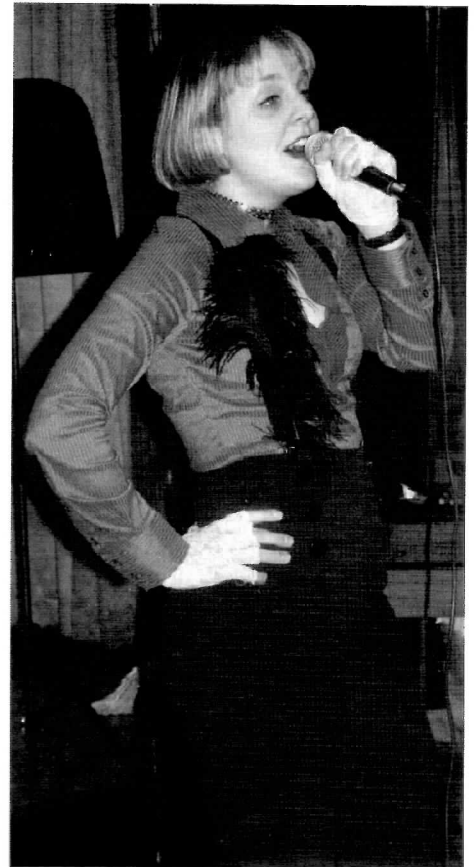


Participants, performers and helpers all enjoyed the show

Below: The scintillating 'Seniors' provided a whole variety of performance



All other pictures: Richard Shaw



Picture credit: Toby Allen

## Thanks to the brilliant performers:

**The Seniors** (organised by Terry ): A regular programme of activities, cafe, benefits advice and special events for everyone aged 50 years and over.:260 Stanstead Road, Forest Hill, SE23 1DD, 020 8699 4977, marylerc@aol.com

**Maria Trevis** - fabulous, sensuous and comedic cabaret (above). <http://profile.myspace.com/index.cfm?fuseaction=user.viewProfile&friendID=423697744>, mtrevis@hotmail.com (and see page 5)

Thanks to **Brockley Social Club** (240 Brockley Rd, 020 8692 3264) for the venue, crockery, and much help. Rose for sandwiches, Kay for cakes. (Darts, cribbage, bingo, cheap drinks, friendly atmosphere. Go and have a chat - say BrocSoc sent you.)

**Cathy** for cakes, **Jean** for sausage rolls. **Shop on the Hill** for a raffle donation. **5 Star Wine** for chocolates and soft drinks. **Top Café** on Brockley Rd for tea bags

**Rotary Club of Deptford** [www.rotarydeptford.org.uk/](http://www.rotarydeptford.org.uk/) Mr Peter Macdonald, 020 8692 5487, for a generous donation for free drinks.

**Neil from University of the 3rd Age** for information and being a great sport. [www.u3a.org.uk](http://www.u3a.org.uk). Secretary, Mrs J M Gould; 50 Bramdean Crescent; SE12 0NS; [j.m.g.lee@btinternet.com](mailto:j.m.g.lee@btinternet.com);

**Tamsin and everyone from the Lewisham Pensioners Forum** which advocates for rights of people over 60. 020 8314 9841.

**Age Concern** and **Contact The Elderly** for supplying information: [www.contact-the-elderly.org.uk/](http://www.contact-the-elderly.org.uk/): Carolyn Robertson 020 8673 8306

All the local businesses and churches who displayed our poster. Everyone who gave lifts. Everyone who came and had a good time. To get involved next year, contact Kate on 07930 181 174.

## Reclaim your garden

# We can do it – so can you!

Hugh Fearnley-Whittingstall hopes to make British land more productive and fresh local produce more accessible to all via his Landshare project, launched last month.

Inspired by the TV chef, enthusiastic Brockley residents have clubbed together to reclaim a friend's overgrown garden in Tyrwhitt Road and turn it back into an attractive, productive plot.

For years the garden - 100ft by 40ft - has been thick with weeds and brambles, and full of rubbish left by previous householders. So far, the team of amateur gardeners has cleared half the plot and stripped the boundary walls of ivy.

When the digging is finished, the volunteers plan to build eight raised vegetable beds and a polytunnel, lay a lawn with flowerbeds around its borders, and create a play area for the children who live in the attached property.

The whole project is being run on a zero budget. 'We're scrounging everything we can and are desperate for materials,' says Kate Glasspool, one of the team.

So far, a local tree surgeon has offered to supply wood chippings for the paths between the raised beds, and a builder's merchant has promised some building materials. 'But we also need timber to build the raised beds and compost heap - and someone to cart all this rubbish away.'

The work has not been easy going. 'The digging was pretty tough in January when



Pictures: James Simke

the ground was frozen solid,' says Kate. 'You could hardly get a fork in the soil. Worst of all, the garden's been invaded by perennial called alkanet - you see it everywhere in Brockley. It looks like the herb borage; the small blue flowers seed everywhere and the taproot goes down to Hades. We have to bag it all up and take it down to the tip.'

Last year, council contractors cut down a number of young ash and sycamore trees that were undermining the garden walls. 'Unfortunately, they didn't remove the stumps, so that's the next task.'

The work is paying off, however. 'The topsoil is superb, 2-3 ft deep, obviously well cultivated at some time. Not surprising when you consider that this area was all market gardens in the nineteenth century, supplying produce to central London. I can't wait to get planting.'

Best of all, the residents are delighted to be getting use of their garden again. Proscovia Kibombo says: 'I'm excited about the end-product and the fact that there are four children who will be able to access a wonderful outside space. It's sad that so many gardens like this in Brockley have fallen into disuse.'

'This feels like a proper community project. We're a bunch of total amateurs, but we really want to make it work. Guy, a farmer's son, has done the lion's share. Without his commitment, not to mention brawn, we'd be lost. All of us have young children. We've had to fit in the work at odd hours between nursery pick-ups or at the weekend. Sometimes, we're all there together, silently but happily digging away for hours; sometimes, we get nothing done as the kids are squabbling over the tools, or moaning that they're bored or freezing.'

*Would you like to grow your own? Are you interested in setting up a similar project? Is your garden too large for you to manage? Would you welcome some help in exchange for allowing someone to grow some vegetables in your property? If so, we'd like to hear from you. Please send any comments to Brockley Society by email.*

*If you would like to become involved in Hugh Fearnley-Whittingstall's Landshare initiative, you can register your interest at [www.landshare.net](http://www.landshare.net).*

## A history of 58 Breakspears Road

*Val Kassl (nee Baker), who now lives in the US, has become interested in genealogy and emailed us details found through census searches about the house she lived in as a child.*

When we moved into 58 Breakspears Road in about 1949 there were bells in every room to call the servants who used to live in the upper three rooms. My brother and I had a lot of fun running from room to room ringing them, so the first thing my Dad did was to disconnect the bells. He used to own the opticians at the end of Cranfield Road.

### 1871 Census

Shows only numbers 1 through 8 Breakspears Road so #58 must have been built some time between 2 April 1871 and 3 April 1881 (dates when the census reports were taken).

### 1881 Census

Richard Stevens or Stephens (1829) lived there with his wife, Caroline Emma Jane (Knight) and sons Walter Knight (1861) and Arthur Knight (1863). Richard is shown as a clerk at the Bank of England. Also living there was a cook and two housemaids.

### 1891 Census

John Thomas Wigner, (about 1814) lived there with his daughter, Harriet Jane (1857) and grandson John Harrison (1873) and grand daughter Doris Annie (1877) - both shown as orphans. John Thomas is shown



The house under repair from war damage before we moved in - they found an unexploded incendiary bomb in the attic



Henry Carter in front of 58 Breakspears - look at the size of the trees and see them now! It must have been taken in the early 1900s, judging by his frock coat. We found the photo in the house when we moved in.

as a Minister of the Gospel. Also living there were two domestic servants.

### 1901 Census

John Thomas Wigner still lived there with daughter Harriett and grand daughter Doris.

John Thomas is shown as retired non-conformist (Baptist) minister.

In 1871 John Thomas Wigner lived at 7 Tressillian Road with sons George William, John March and William Gurney and daughter Harriett. John Thomas is shown as Baptist Minister, Brockley Road Chapel.

In 1881 John Thomas Wigner had lived at 43 Breakspears Road with daughter Harriett and is shown as Baptist Minister. Also living there were two housemaids.

### 1911 Census

Louisa Carter (1852) lived there with daughters Ruth Carter (1877), Priscilla Carter (1878), Helen Margaret Carter (1898), Jessie Louisa (Carter) Sanders and son Raymond Philip Carter (1882). Also living there was one domestic servant.

Louisa is shown as a widow and her oldest son, Archibald is married and living at 90 Brockley Road with his wife Harriett (Baker) and their two children.

1901 Census shows Henry (1845) and his wife Louisa (1852) living at 104 Brockley Road. Henry is a milliner.

Henry Carter (1845) must have died between the 31 Mar 1901 and 02 Apr 1911.

My Dad purchased the home from Mr. Carter (presumably Raymond Philip) and his two unmarried sisters, who moved to a smaller house in Orpington.

# Transition Brockley - What's that?

If you aren't aware of the Transition Town initiative, you soon will be, because people all over the UK and the world are waking up to the realities that oil and other fossil fuels will run out and that climate change is happening due to our dependence on these energy sources.

To prevent the predicted effects of climate change and to be prepared for a scarcity of oil, people are developing a more self-sufficient and sustainable way of living in their community. It is a grass-roots movement which began in Totnes and has spread to include urban areas like Brixton and Nottingham and is growing as you read this.

Small communities are introducing ways to reduce their carbon footprint through alternative energy use (with targets set), local food growing and even local currency, amongst many other exciting and different initiatives. They are linking up with individuals and all private and public organisations including councils and government to combine expertise and resources in a bottom-up rather than a top-down approach.

In this way people can have more control over their lives by seeing practical results from their participation. It's difficult to describe in a few sentences, but you can find out more by googling 'Transition Towns' and following the links from there.

Brockley is full of not only environmentally concerned people from different backgrounds but also those with gardening, food, artistic and other skills to be able to

make the transition process one which is fun and rewarding.

There is a small group of people who want to start a 'Transition Brockley', so if you are a convert, are interested or even if you like the idea but are dubious about what can be done, please let us know! Contact: Fran at: [fr2rogers@gmail.com](mailto:fr2rogers@gmail.com), 020 8692 2472 for more details.

[www.locallife.co.uk](http://www.locallife.co.uk)

**Want to make the most  
of living in Brockley?  
Then you'll love  
[www.locallife.co.uk](http://www.locallife.co.uk)!**

LocalLife is the UK's premier local information website receiving over 220 million hits each year. It's easy to use and packed with local services. The concept is simple - you type in what you want and LocalLife shows you all the relevant local providers, with direct links to their websites. With over 1800 categories covering everything from accountants to yoga, LocalLife really is a one-stop shop. From one website you can plan your wedding, find all you need to redesign your home, research childcare or choose a take-away. And LocalLife covers everything, making it easier for you to recycle unwanted goods, take up a new hobby or just make better use of local services. And of course you can use it to find local information 24/7 when most businesses are closed!

A Brockley resident, Sian McLean, found

LocalLife when she was looking for a solicitor. LocalLife was the only website that gave full and impartial information about all firms in the area, with direct links to their websites. Looking for a local service was so easy on LocalLife, Sian thought others might find it useful too so she bought the Lewisham franchise! The Lewisham site is growing all the time - let us know if you think something is missing.

LocalLife's simplicity makes it different to other information websites. Not sure what you need? Type in 'weddings' and LocalLife will offer you everything from marquees to caterers. Search for 'DIY' and you'll find details of local handymen or power tool rental. So whether you need a plumber in a hurry, or are planning a holiday and want to book a hotel, you'll find whatever you're looking for in one simple search at [www.locallife.co.uk](http://www.locallife.co.uk). Non-profits get free advertising, so contact us if you know a local group that would benefit from more publicity.

LocalLife also supports local business and community groups through its web design service. LocalLife aims to get every organisation onto the web, and offers professional web design at prices to suit the smallest budget. If you run a business, contact LocalLife to make sure that you're making the most of the web to promote your services effectively and without breaking the bank. Linking your website to LocalLife will help make sure that local customers can find you.

Contact: Sian McLean 07941937535 or  
Christele Ambono 07588884229  
[Sian.Mclean@locallife.co.uk](mailto:Sian.Mclean@locallife.co.uk) or  
[Christele.Ambono@locallife.co.uk](mailto:Christele.Ambono@locallife.co.uk)

## BROCKLEY SOCIETY

*Beautiful Brockley  
Competition*



**Best Balcony**

**Best  
Window Box**



**Best Front  
Garden**

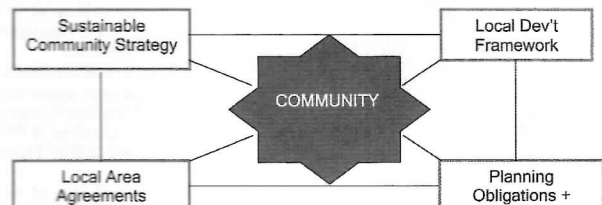
Judging: Saturday 13 June to Friday 19 June

Prize Giving at the Hilly Fields Fayre,  
Saturday 20<sup>th</sup> June

*Help make Brockley beautiful!*



**PLANNING FOR SUSTAINABLE COMMUNITIES:  
GETTING THE MOST OUT OF THE BIG 4!**



Thursday March 26<sup>th</sup>, 2-5.30pm:  
The Guildhall Marketing Suite.

This event will examine examples of best-practice in London, of successful Voluntary and Community sector involvement in Local Strategic Partnerships (LSP), and in local negotiation of LAAs and Planning Obligations, and the integration of Sustainable Community Strategies with LDFs. It will help clarify the planning system, and is intended to improve coordination between planners and the Community / Voluntary sector, and highlight opportunities for community involvement. A report of findings will be produced.



**Planning for Sustainable Communities:  
Getting the most out of the Big 4!**

Thursday 26 March, 2-5.30pm:  
The Guildhall Marketing Suite.

Book for this FREE event by contacting Lucy Barton at  
[london@rtpi.org.uk](mailto:london@rtpi.org.uk) or 020 8613 8357

More information: [www.planningaidforlondon.org.uk/?idno=507](http://www.planningaidforlondon.org.uk/?idno=507)

## Lewisham Local Development Framework

A new report, revised February 2009, has been produced by Lewisham Council for the Core Strategy Options of the Local Development Framework (LDF). When finalised, this will provide guidance and policies for regeneration and development in Lewisham over the next 15 years.

The consultation process has started. Local community consultation will take only seven weeks, finishing early April. There will then be a period of four months while officers weigh up the submissions and redraft the Core Strategy options document, which will be subject to scrutiny about November 2009. Other processes include further public consultation and a Planning Inspector's inquiry to determine the final document. This means that it will not come into force until 2011. The council currently has no other planning policies to guide them on planning matters except the existing Unitary Development Plan (UDP) and Mayor of London's Plan.

**The new LDF strengthens the hand of developers and weakens the hand of the ordinary resident. There is also continued concern from members about 'in-fill' and this LDF appears to worsen the situation because of pressure on councils to provide housing units, in line with government thinking.**

Brockley Society and other Lewisham Community groups are sharing and discussing concerns about different aspects of this document and the process, to submit our response. **The LDF may make it much more difficult for objectors to make a detailed case about failure to address planning policies.**

*Anyone who wants a brief summary copy of this revised report should contact the Directorate for Regeneration at Lewisham.*

*Tel: 020 8314 3127.*

*Email [planning@lewisham.gov.uk](mailto:planning@lewisham.gov.uk)*

## Just a bite from the Brockley Foxes

Due to the inclement weather and icy surfaces under-paw, the foxes have only dined out once this winter season. However they were delighted to discover that **The Aquarium**, 5 Harefield Road, SE4 1LW, 020 8469 0055, is every bit as nice as the Brockley Bloggers' rapturous praise would suggest.

We had a friendly welcome from the manager who made sure we were comfortable with our drinks while choosing from the menu. When we asked about the freshness of the tuna, the raw portion was brought over for inspection (it was reassuringly pink and succulent-looking and smelt very fresh indeed).

The portions of 'mixed starters' were extremely generous accompanied by warmed bread. The house wine at £12 was not as good value as the Beaujolais villages at £14 (following the old adage that the cheapest wine on the menu is half as good as the next-to-cheapest), but it improved as it was allowed to breathe and as the evening went on!

The two tuna main courses arrived 'rare' and 'medium rare' just as ordered. The prawns in chilli sauce had just the right texture and intensity of flavour. The lemon chicken was 'lemony'. The only food

## PLANNING APPLICATIONS

### Applications Granted

The alteration and conversion of the 1st and 2nd floor maisonette at 33 Breakspears Road, together with the installation of replacement rooflights in the front and rear roof slopes, a new roof light in the side roof slope and a new window in the side elevation at first floor level to provide 1 studio and 2 two bedroom self contained flats, with the provision of a refuse storage area in the front garden.

Details of cycle storage submitted in compliance with Condition (5), landscaping proposals submitted in compliance with Condition (7), external doors, windows and roof windows submitted in compliance with Condition (8) and details of the lightwells (including means of protection) submitted in compliance with Condition (9) of the planning permission dated 5 February 2008 for the change of use, alteration and conversion of 33 Wickham Road, together with the construction of a single storey, plus basement, extension to the rear, alterations to the side and rear elevations, including the installation of roof lights and dormer windows and formation of light wells to the front and rear, to provide 7 two bedroom and 1 three bedroom, self-contained flats, associated landscaping and provision of refuse/recycling and cycle stores.

The construction of a dormer extension to the rear roof slope of 50 Chalsey Road, together with the installation of roof lights in the front and rear roof slopes, in connection with conversion of the roof space to provide additional living accommodation.

The construction of a dormer extension to the rear roof slope, together with the installation of roof lights to the side roof slope of 59 Breakspears Road, in connection with alterations to the roof space to provide additional living accommodation.

The installation of a replacement aluminium framed shopfront at 329-331 Brockley Road.

The installation of an automated telling machine to the front of Brockley Road Post Office, 185 Brockley Road. The retention of 2 roof lights in the rear roof slope of 142 Tressillian Road.

The construction of a three storey, plus roof space building at 159 Upper Brockley Road comprising 1, one bedroom and 1, three bedroom, self-contained maisonettes.

The installation of 3 roof lights into the rear roof slope and 1 roof light into the side roof slope of 20 Wickham Road.

The provision of a replacement dormer extension, incorporating a recessed balcony and French doors to the rear roof slope of 68 Manor Avenue.

The increase in height to 3.22 metres of an existing garden structure to the rear of 91 Manor Avenue. The installation of a new window opening in the side elevation at 40E Wickham Road.

### Window Replacements

The installation of PVCu, replacement windows and doors, in the front and rear elevations of Flats A-E, 87 Tyrwhitt Road

The installation of PVCu double glazed sliding sash replacement windows to the front elevation of 11a, 15 15b Tressillian Crescent.

The installation of PVCu double glazed sliding sash windows to Flat 1 and 9, Oaklands House, 90 Cranfield Road.

The installation of double glazed timber sliding sash replacement windows to the front and rear of 48 Manor Avenue.

### Refusals

The construction of a two storey, 2 bedroom dwelling house in the rear garden of 99 Upper Brockley Road fronting Ashby Mews.

The installation of PVCu double glazed casement replacement windows to the front elevation of 125 Breakspears Road.

### Roof Replacement (Brockley PFI)

The replacement of the existing roof covering with Eternit Rivendale fibre cement slates at 65, 94, 122, 138,

149 and 151 Breakspears Road; 86 and 107 Upper Brockley Road; 158 and 164 Lewisham Way; 21 Cranfield Road; 7, 13, 15, 17 and 61 Tyrwhitt Road; 30, 40, 42, 45, 47, 98 and 108 Tressillian Road; 3 Wickham Gardens, 8 Glendale Road and 32 Manor Avenue.

### Trees

Crown lift to 6m. and reduce and reshape by 30% to previous reduction points a Sycamore tree to the rear of 70 Geoffrey Road.

Crown reduce and crown thin an Oak tree to the rear of 87 Upper Brockley Road.

Remove an Ash, two Sycamore trees and a Sycamore sapling from the front of 77A Tyrwhitt Road.

Fell a Bay tree to the rear of 98 Tressillian Road.

Remove an Elm and two Beech trees to the rear of 1 Manor Avenue.

Crown reduce by 35% a Pear tree to the rear of 14 Garsington Mews.

Fell a Horse Chestnut and a Sycamore tree to the front of 16 St Margaret's Road.

Remove limb growing towards property, cut back by 3m to clear property, crown lift to 4m, crown reduce by 30% and crown thin by 20% an Oak tree to the front of 10 Breakspears Road.

Repollard a Lime tree to the front of 92 and 94 Breakspears Road.

Cut back from telephone wires by 3m a Eucalyptus tree to the front; reduce by 3m extended limbs of a Prunus avium and lift by 2m lower canopy of a Prunus tai haku, both to the rear of 70 Tyrwhitt Road.

Remove stem closest to property, crown lift to 3.5m and reduce and thin by 20% remaining crown of a Lime tree to the front of 98 Breakspears Road.

Crown reduce and shape two London Plane trees and coppice a Goat Willow tree at Lewisham College, Lewisham Way.

Remove a Sycamore tree from the rear of 72 Adelaide Avenue.

Thin throughout canopy of a Pine tree to the front of 99 Breakspears Road.

Reduce top and property side to previous pruning points of a Sycamore tree (approximately 30%) to the rear of 176 Tressillian Road.

Fell a Robinia and crown lift to 5m a London Plane tree in Breakspears Mews adjacent to 2 Breakspears Road.

Repollard eleven Lime trees on the western boundary of the car park at Royston Court, Ashby Road.

Reduce by a third a Hawthorn to the front and a Pyracantha to the rear of 91 Tyrwhitt Road.

### Pending

Remove a Sycamore tree from the rear of 49 Tressillian Road, ell a Stone Pine tree to the front of 57 Breakspears Road. The installation of 2 rooflights in the rear roof slope of 20 Garsington Mews. The construction of an additional garage for the storage of motorbikes attached to an existing garage at Breakspears Mews.

Remove or pollard a Lime tree, selectively cut back or remove overhanging limbs from two London Plane trees within the car park at Lewisham College, Lewisham Way. Fell a Sycamore and a Pear tree to the side of 62 Wickham Road, ell two Elder trees at Veronica House and carry out minor remedial and maintenance work as detailed in the schedule to a London Plane and a Horse Chestnut tree at Syringa House and to two London Plane and two Beech trees at Jasmine House. The construction of a dormer extension in the rear roof slope at 2 Hilly Fields Crescent. Cut back limb growing towards building and reduce and reshape a Holm Oak tree; reduce all upright growth, remove dead and broken limbs and lightly thin remaining crown of a Pear tree, both to the rear of 17 Hillyfields Crescent. The construction of a 2 storey extension to the rear of 5 Wickham Road SE4, together with a single storey outbuilding in the rear garden. Fell a Cherry tree at 123 Breakspears Road. Fell a Sycamore tree to the rear of 132 Breakspears Road. Retrospective Conservation Area Consent for the demolition of the damaged front wall at St Gregorio's Indian Orthodox Church, Cranfield Road.

complaint of the evening was that it arrived on a cold plate.

Vegetable dishes are ordered separately and the mashed potatoes were thought to be a masterpiece. We ended a jolly meal with a brandy and Jack Daniels and decided that our only serious complaint was that the tables - famously lumpy and uneven - were also rather small for four people to eat comfortably, however this is definitely one of Brockley's best eateries.

### Editor's bite

Try **Saigon Blues**, 207 Lewisham Way, SE4 1UY, 020 8305 8133. We found their Vietnamese dishes fresh, delicate and delicious. Nice setting and pleasant service.

### Call for expressions of interest:

Maria Trevis, local cabaret artist and actress will be offering women the opportunity to do a cabaret dance and movement class to build assertiveness and develop body-confidence.

**Please email her at [mtrevis@hotmail.com](mailto:mtrevis@hotmail.com)**

Maria will also be running a series of one-off communication workshops in early 2009 called Cabaret, Confidence and Communication in the local Lewisham area.

### To find out more visit

**[www.expressionistevents.com](http://www.expressionistevents.com) and submit an expression of interest via the website.**

## CHERRYLI NURSERY

### Looking for a nursery?

Comfortable and homely baby unit for babies 6 months and up

Nursery places for children aged 2 to 5 years  
Come and see us at Cherryli

We are an independent nursery, owned and managed by a qualified teacher. We have a small, committed team of staff who will care for your child in a creative, homely environment.

[www.cherrylinursery.co.uk](http://www.cherrylinursery.co.uk)

- Caring, friendly staff
- Structured, stimulating environment
- Fresh, home-cooked food
- Beautiful hand-crafted wooden interior
- Reasonable prices
- Variety of structured activities and free play
- Childcare vouchers accepted
- Large secure garden with play area

40 TYRWHITT ROAD  
LONDON SE4 1QG

Walking distance from St John's BR station  
and bus routes 21, 436, 136 & 321

Open weekdays 8am to 6pm

We will be happy to show you around any time

020 8691 0497



## Local Tradesman

Fully Insured  
Carpentry and Joinery  
Building and Maintenance

- \* Fitting kitchens and bathrooms \*
- Painting and decorating \*
- Laying wooden, laminate and tile floors \*
- Mosaic floors \*
- Repairing and replacing sash windows \*
- Fitting doors and windows \*
- Plastering \*
- Replacing ceilings \*
- Tiling \*
- Garden decking

**Mr S Goodison**  
07963 897 802  
020 8692 0260



### What's happening at Aquarium...

We are now serving Mediterranean cuisine  
Open 7 days a week, 10am to late.

Bar Menu  
Lunch Menus  
Sunday Roasts  
Set Menus (for parties)  
Our venue is also available for exclusive hire  
with DJ provided

### AQUARIUM

5 Harefield Road, Brockley  
0208 469 0055



## CATS @ HOME

Formerly Pet and Plant Nannies, established 1988

We care for your cats in the comfort and security of their own home during your absence. We provide a reliable, trusted and confidential service recommended by Veterinary Surgeons and endorsed by our many satisfied clients. References are available and we are fully insured.

House plants watered too

Please contact Viv Hutter on 020 8692 0023 or email:  
[viv@cats-at-home.com](mailto:viv@cats-at-home.com) or visit our website, [www.cats-at-home.com](http://www.cats-at-home.com)  
to discuss your and your cat's requirements.

## Non-Denominational Ceremonies

We help to make the special occasions in your life - Weddings, Baby and Child Blessings, House Blessings, and Funeral Services - uniquely personal to you and your loved ones, and we cater for all faiths, or none.

We offer inspirational talks, for your club, school, charity, or organisation. And on a more personal note we also offer spiritual counselling to individuals.

Ministering for the New Millennium.

For Enquiries / Bookings, please call John on 020 8469 3662, or mob. 07877 985 919

## CLASSICAL OSTEOPATH

NEIL FENNEL [mico.do](http://mico.do)

Helping in SE4 since 1992  
osteopathy, cranial, reiki, reflexology

Home visits available

07791 681 237

## Shiatsu

Michael Woolley MRSS

17 years' experience successfully helping with back, neck and shoulder problems, RSI, headaches and migraine, menstrual problems, fatigue and stress.

Brockley Practice  
and  
Home Visits

Tel: 07941 551356  
[shiatsu@michaelwoolley.com](mailto:shiatsu@michaelwoolley.com) [www.michaelwoolley.com](http://www.michaelwoolley.com)



## THE SUMMER GARDEN

Overgrown Gardens  
All Tree Work and Lawns

by qualified Horticulturalist

Tel. 020 8690 6061

## Painting and Decorating

Cornice Cleaning &  
Period Feature Renovation

For a Professional and Courteous Service call

Ian Hibbert

020 8690 5624

07770 753 177

Free quotations & advice  
References available

e: [ian.hibbert@btconnect.com](mailto:ian.hibbert@btconnect.com)

## Kitchen and bathroom refurbishment from design to completion

Central Heating - Extensions

Plumbing and Electricians

Carpentry - Plastering - Decorating - Tiling

No call-out charge - Free estimates

Local references available - All work guaranteed

40 years' experience.

**Len Bintcliffe**

Tel 07976 579 721 020 8331 0776