

# BROCKLEY SOCIETY



Issue 114 November 2008

Charity No: 1004245

Delivered free to 4000 households in Brockley Conservation Area

three times a year: March, June and November

## BROCKLEY SOCIETY

### Annual General Meeting

Wednesday 12 November 8pm  
Baptist Church Hall,  
60 Upper Brockley Road, SE4  
(entrance in Vulcan Terrace)

#### Light refreshments

Includes election of committee.  
We still need nominations for minutes secretary and events organiser and we're looking for a new newsletter editor - see page 6.

#### All welcome

#### Invited speakers on various subjects including:

Hilly Fields user group, Friends of Brockley and Ladywell Cemeteries, Brockley PFI refurbishment of properties in Algiers Road and the surrounding neighbourhood, improvement of Brockley Road.

*Come and listen, or take the chance to make a difference to the area you live in*

#### Lost at the Rivoli!

At the Brockley Society Reunion at the Rivoli Ballroom in May, an ornate silver tray with feet, somebody's treasured family possession, was inadvertently taken home by someone helping to clear up. Please ring Clare on 020 8692 3829 if you know where it is.

#### Copy deadlines for newsletter:

1 February, 1 May, 1 October  
to [clare@summer-type.co.uk](mailto:clare@summer-type.co.uk)

*If you have ideas about the newsletter or would like to contribute, please email Clare. We will have a meeting in September to plan its future*

#### Farmers' Markets on Hilly Fields

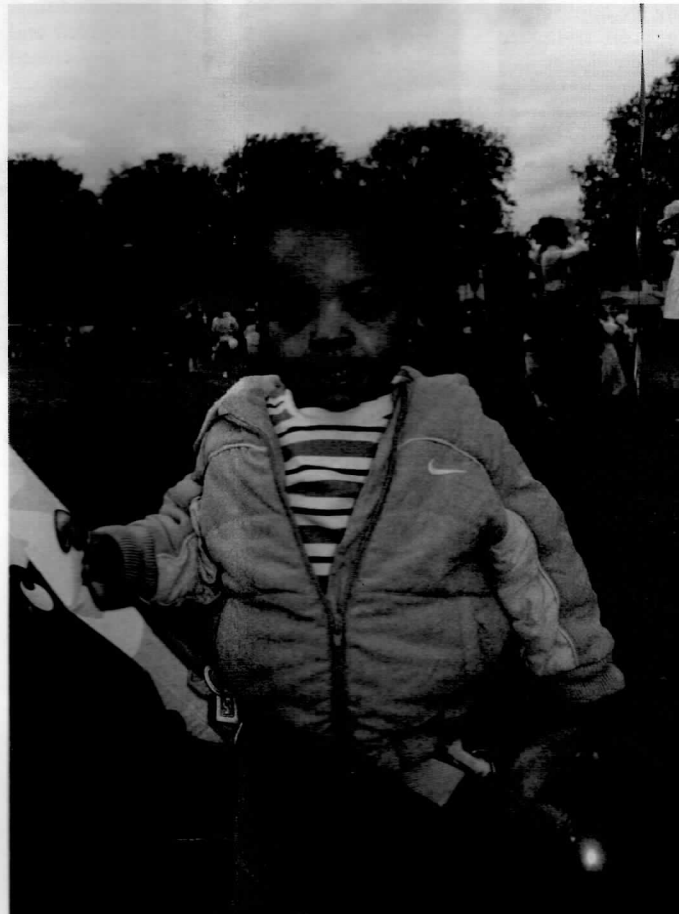
Second Saturday of each month 10am-3pm

## BROCKLEY SOCIETY

[www.brockley.com/brocsoc/](http://www.brockley.com/brocsoc/)

Chair	.....8692 5027
	<a href="mailto:prbyrne@clara.co.uk">prbyrne@clara.co.uk</a>
Fayre (general)	.....07714 084 296
Fayre (stall details)	.....07758 464 195
Newsletter	.....8692 3829
	<a href="mailto:clare@summer-type.co.uk">clare@summer-type.co.uk</a>
Newsletter distribution	.....8692 5027
Police liaison	.....8692 6977
Transport	.....8691 1463
Local history	.....8692 6977
Planning & highways	.....8692 6977
	<a href="mailto:fonemefirst@talktalk.net">fonemefirst@talktalk.net</a>

*Everyone living in the Brockley Conservation area is automatically a member of the Brockley Society. The Brockley Society welcomes all.*



We think this youngster sums up the spirit of the Hilly Fields Fayre and we have decided to award a prize. Proud parents please contact Kate on 020 8469 3097.

More Fayre pictures: see page 3

## Brockley Christmas Market

### Saturday 13 December

Last year's Christmas market at Coulgate Street was a great success (over 1700 people had visited by the end of the day). The organisers are planning for this year's market now.

If you would like a stall (or know someone who might) let them know NOW. Stalls cost £40 and need to be paid up front. You can reserve a stall, but if someone else comes along and pays, they take priority. Send a cheque (payable to the Brockley Cross Action Group) or drop off cash at Broca Café, Coulgate St, Brockley SE4 2RW. Please include your contact details and indicate the nature of the products you will be selling, e.g. seasonal gifts/wrapping paper/cards/etc.

## Midwinter Warmer for our older residents

January is such a cold, dark, boring month; Christmas is over and the warm days and long nights seem a very long way away. To beat the January blues, BrocSoc is organising a Midwinter social event for all the local seniors. We're aiming to have it on the afternoon of Saturday 31 January and there

will be music, food and drinks in a local venue. Everyone is welcome and if you have limited mobility or would need a lift, please contact us. If you know of anyone who would like to attend, or if you would like to help out with food or drink donations, decorating the venue, entertainment, publicity or transport, let us know. This is an opportunity to make new friends and really take part in your local community.

Contact Kate on 020 8469 3097; [ktwoodbyrne@hotmail.co.uk](mailto:ktwoodbyrne@hotmail.co.uk) or at 36 Cranfield Rd, SE4 1UG.

## 47 Breakspears Road: an unexpected victory for Brockley residents?

Monday 10 November, 7pm, St Andrew's United Reformed Church, (cnr Brockley and Wickham Roads), SE4 2SA. A meeting called by Lewisham Planning for residents to discuss a new application for 47 Breakspears Road.

Lewisham Planning appeared to ride roughshod over the views of Brockley residents who wish to conserve the conservation area when they granted a previous planning application for 47 Breakspears Road. Out of 150 petitions

turn to page 2

distributed on Wickham, Breakspears, Tressillian and Tyrwhitt Roads, we had 98 responses with a total of 168 names objecting.

Unfortunately, the Head of Planning considered the petition inadmissible on a technicality. The senior planning officer argued that she favoured the 'deliberate introduction of differences' and did not want to see 'mimicking' in the reinstatement of a semi-detached conservation house. Only Cllr Dean Walton voted against granting the application.

However, whilst we have been trying to block the development, the developer has also come to the conclusion that it was so large it was simply not viable. He has since applied for a single-family home, albeit with the same botched, unsympathetic design. This time, we made sure the views of Brockley residents will be considered and the Planning Department, to their credit, is holding a meeting with residents on Monday 10 November starting at 7.00pm at St Andrew's United Reformed Church. This could set a great precedent for Brockley.

Matthew Mayes

Σ  
As reported in the February 2008 newsletter, Brockley Society objected to the previous planning application. This house is the eighth in a row of seven pairs of otherwise identical Victorian semi-detached houses from 33 to 59 Breakspears Road. The plans submitted destroyed the integrity of this row of 14 houses. The plans were inappropriately designed for an excessively large building and we felt that this was one of the few places where a pastiche building was the best solution. Our views were ignored by the planning committee.

## Controversial planning application

### Planning application (DC08/69830) to change the use of 60 Manor Avenue to a Nursery

60 Manor Avenue has been a club since at least 1928, and still is the United Services Club, with residential accommodation on the top two floors. The application seeks to turn the whole building into a Nursery for 80 children and 23 full time staff.

Currently there is a link passage to the large dance hall with bar which covers most of the rear garden. The inadequate and inaccurate plans appear to show demolition of the link to form a play area next to the back of the main house (this would be noisy, with echoes between the high walls and does not appear to be large enough for the number of children); complete removal of the residential element; and use of the 'dance hall' as three separate classrooms. There would be serious overlooking to the neighbours and, no doubt, a lot of noise for most of the day.

Other problems such use could cause are parking for 23 staff (where?) and the movement of 80 children morning and evening. One can rarely find a parking place in Manor Avenue at present.

If you want to air your views to the Council please write urgently, quoting the ref. number above. If the Council as minded to grant permission it is likely to be decided by the Planning Committee, when we will be allowed to speak.

Gillian

## Longtime wedding

The Longtime café by Brockley station is one of the best places to eat in the area. The Vietnamese food cooked up by Tom, Alan, Thang and Chef is spicy enough to be interesting, but you can still taste the ingredients, which are fresh and light.

Eleanor Kirwan and Tom Burnside like it so much that when they got married in July they asked Tom, the boss, to come and do the food for their wedding. He agreed and so they closed the café for the day and cooked a feast for 150 people



which was widely declared to be the best wedding food anyone had ever eaten. They make all their customers feel as though they are having a meal with friends, but that day they said we would be family, and that was how they treated all the wedding guests.

Trottie

Longtime Cafe, 10 Coulgate Street, 020 8691 3855

## Brockley Foxes' autumn forage

*Since the last newsletter the Brockley Foxes have enjoyed a variety of local dining experiences. Trotting through the darkening shrubberies of our pleasant neighbourhood the foxes have been casting warm and friendly glances into brightly lit windows, seeing happy couples and families, the lonely bloggers, the busy members of the BrocSoc, and more. We feel we should share our thoughts on some of our eateries with our local friends and newsletter readers.*

Early in the summer, we visited the newly refurbished **Ladywell Tavern** (80 Ladywell Road, SE13 7HS, 020 8314 2801) – now a gastro pub, just the sort of informal eating that should do well in this area. The décor was a little unfinished at that point, so although the slightly uncomfortable tables and chairs were a little too close together, this may have been temporary. The service was brisk and cheerful and the menu looked as though the chef had thought about the dishes. Our starters were fresh sardines (generous but a bit mushy), duck eggs (too generous: two eggs with 'soldiers' as a starter!), a salad (which was good) and the chips were consistently excellent.

For main course two of our party had the signature dish, Suffolk Pig Pork belly. A very difficult cut of meat to make interesting and delicious, but taking this into consideration the chef was given full marks for careful cooking and presentation. Beef and mashed potato was traditional and tasty if a little salty, but the youngest member of our party (a fox cub) was delighted with the moules accompanied by a huge bowl of frites, the only criticism being again that they were a little salty. Nobody could manage the highly recommended pudding, Eton Mess, which we had heard was a delicious concoction. We were informed that a new wine list was about to be printed and hoped it would have more of the £12 to £15 wines than the one we were given. The Adams Bitter was criticised for being 'past it' although it had been sampled on a previous visit and had been good. The assumption was that not enough people drink it to use it up before its 'best before' date.

Our next visit in high summer was to another newly renovated pub under new management, **The Brockley Jack** (410 Brockley Road, SE4 2DH, 020 8699 3966). A pleasant surprise on entering – what a transformation! Apart from looking great the new design is superbly user-friendly with plenty of space for conversation away from music (a problem at the Ladywell Tavern)

and a very nice garden area. We had a starter platter to share, which was generous and accompanied by warm bread. Then we chose typical pub grub main courses of steaks, fish and chips and ham, egg and chips. There was some doubt that the steaks were cooked as requested – 'medium rare' was more 'medium' than 'rare' – but were thought acceptable. The ham, egg and chips were OK but the egg had gone cold by the time it was served. Although standard pub fare, it was well presented and all well cooked, including excellent chips. The fish was not freshly deep fried, nearly always the case in a pub/restaurant and the mushy peas were a startling green, but the chips crispy and excellent. Wine was surprisingly good value: a good Côte du Rhône at a two-bottle offer of £11.35. A very jolly quiz added to the cheerful ambiance. The foxes rather regretted not joining in and generally pronounced the newly refurbished Brockley Jack 'nice' or even 'very nice'.

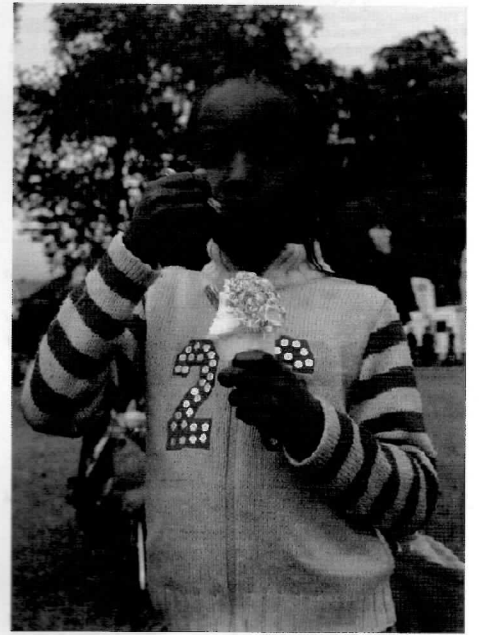
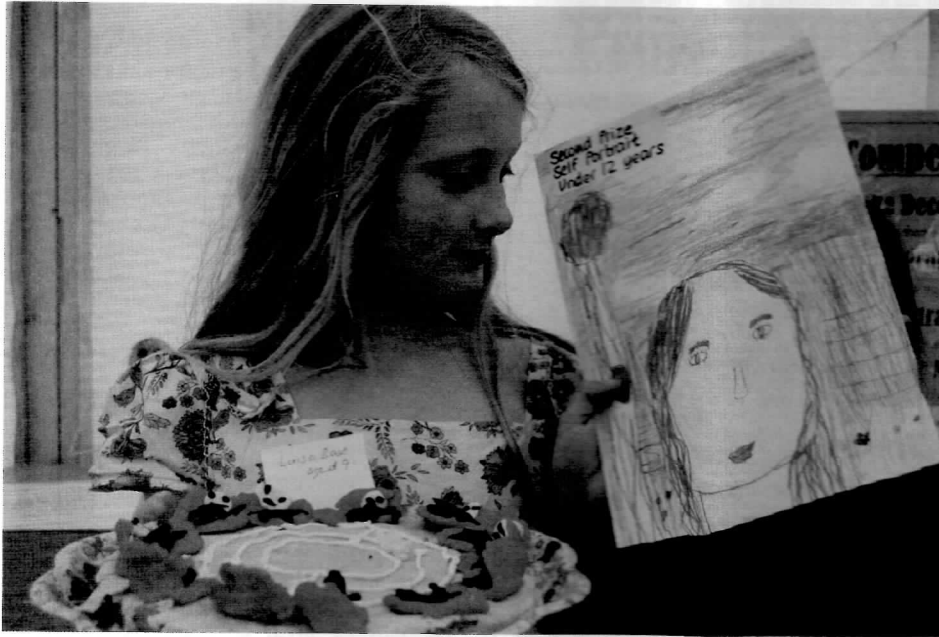
On a chilly Autumn night a visit to the Gourmet Kitchen next to Goldsmith's College was planned, but the combination of an excited freshers' party and vast plasma screens sent us across the road to sample Thailand (15 Lewisham Way, New Cross, SE14 6PP, 0871 3327 198). Long term residents will remember that this restaurant used to be in the Good Food Guide and the menu looked interesting. Starters were good, the Thai soup was excellent and the unusual pork cakes good. 'Mixed starters' offered a variety of deep fried 'tempura' vegetables which were light and crispy, with the vegetables inside tender. However the barbecued prawn main course arrived at the same time as the starters and had to be returned and re-heated and the service was generally of the standard that makes you want to get up and help the polite little waitresses sort everything out! An unusual North Thailand chicken main course dish was thought very good and flavours and sauces in most dishes were good, although nothing could disguise the fact that the beef in starters and main course was definitely chewy. The wine list was unremarkable but good value.

### A few more bites

**Aquarium** (formerly Ecosium) Restaurant, 5 Harefield Road, SE4 1LW, 020 8469 0055, is under new management. Open for breakfast lunch and dinner seven days a week, from 9am till late. Well worth revisiting.

**Café Oscar's**, 48 Ladywell Road, SE13 7UX. Delightful, recently opened. Excellent coffee, garden at back. Mon-Sat. A Brockley Central blogger calls it 'a triumph both for the owners and the people of Ladywell Village'. Try it!

# Faces at the Fayre, Saturday 21 June 2008, Hilly Fields



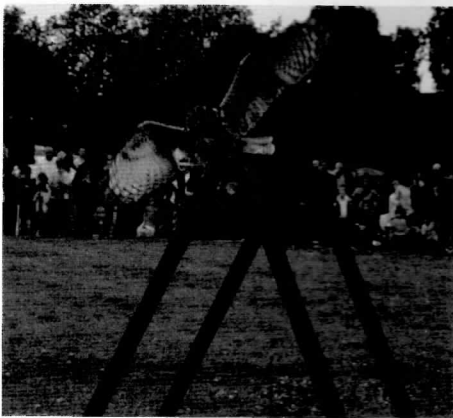
## Fayre Competition

*How many party balloons would the CO2 emissions of a typical Lewisham household fill in a year?*

Thanks to all those who entered the Green Party balloon competition. The correct answer was 464,900. The winning answer was 500,000. 2nd and 3rd prizes went to answers of 250,000 & 754,000 respectively.

The answer is derived from the following calculation: a balloon can contain about 10g of CO2. The average Lewisham household produces 4,649 kg a year. So 4,649 kg x 1000 gives 4,649,000 g per year which divided by 10 gives 464,900 balloons.

*Dean Walton*



### BROCKLEY SOCIETY

## BARBECUE



The Society owns a very large and splendid barbecue.

You can hire it for the modest fee of £15-20 for the weekend.

Contact Bob on 8692 2289

## PLANNING APPLICATIONS

The alteration and conversion of 42 Adelaide Ave to provide 2 two bedroom self-contained flats and 1 three bedroom self-contained maisonette, together with the provision of railings and steps to the semi-basement area at the front, a new boundary wall to the rear, 3 bicycle spaces, refuse storage space and the retention of two roof lights in the rear roof slope. **Granted**

The installation of PVCu replacement windows and entrance doors to May Tree House, Jasmin House and Syringa House, Wickham Rd. **Refused**

The installation of PVCu replacement windows and entrance doors to 17-32 St Peters Court, Wickham Rd. **Granted**

The installation of PVCu replacement windows, balcony and entrance doors to 1-16 St Peters Court, Wickham Rd. **Granted**

The installation of two roof lights in the front roof slope of 83 Wickham Rd. **Granted**

Details of the French doors, side lights and roof light, submitted in compliance with condition (1) of the planning permission dated 29 May 2008 for the construction of a single storey extension including a roof light to the rear of 147A Breakspears Rd. **Granted**

The installation of an awning to the front elevation of 1 Harefield Rd. **Granted**

The construction of a dormer extension and installation of two 'Velux' roof windows in the rear roof slope of 20 St. Margarets Rd. **Granted**

The formation of a vehicular crossover to the front of 26/27 Eastern Rd. **Granted**

The formation of double doors at lower ground floor level in the rear elevation of Flat A, 16A Tressillian Rd. **Granted**

The installation of rooflights in the front and rear roof slopes at 14 Harefield Rd, in connection with the conversion of the loft space to provide additional living accommodation. **Granted**  
Conservation Area Consent for the demolition of garages at the rear of 60 Breakspears Rd. **Refused**

60 Breakspears Rd - the construction of 3 prefabricated micro compact homes with associated landscaping. **Refused**

The formation of a roof terrace with balustrade at first floor level, together with the construction of an external staircase to first floor level at the rear of 59 Breakspears Rd. **Refused**

The construction of a part one/part two storey extension to the rear of 106A Upper Brockley Rd. **Granted**

The installation of timber double glazed replacement windows in the elevations of 1 Beverley Court, Breakspears Rd. **Granted**

The demolition of the existing buildings at Ashby Garages, Breakspears Mews (rear of 38 Breakspears Rd) and the construction of 4, two storey workshops (Use Class B1). **Refused**  
Conservation Area Consent for the demolition of the existing buildings at Ashby Garages, Breakspears Mews (rear of 38 Breakspears Rd). **Refused**

The demolition of the existing front steps and the construction of new steps together with the construction of a front boundary wall and railings at 98 Upper Brockley Rd. **Granted**

The demolition of the existing double garage at 103 Manor Ave and the construction of a three storey 3 bedroom dwelling house. **Refused**

The construction of a dormer extension to the rear roof slope and a Velux roof light in the side roof slope of 35c Breakspears Rd. **Granted**

The construction of a part single/part two storey extension at ground and lower ground floor levels, to the rear of 156 Upper Brockley Rd. **Granted**

The installation of a replacement roof light together with an additional new rooflight in the front roof slope of 58 Cranfield Rd. **Granted**

Details of the site investigation submitted in compliance with Condition (13) (a) of the planning permission dated 26 August 2005 for the construction of a two storey, three bedroom house with integral garage to the rear of 195 Brockley Rd fronting Harefield Mews. **Refused**

Certificate of Lawfulness in respect of the continued use of 33 Breakspears Rd as 1 one bedroom self-contained flat and 1 four bedroom self-contained maisonette. **Granted**

The construction of a part single/part two/part three storey, three bedroom house, with ancillary office accommodation at the rear of 27 Vicars Hill SE13. **Granted**

The installation of replacement double glazed hardwood framed windows and door at ground level to the rear of 35A Breakspears Rd, together with a vented window in the basement lightwell. **Granted**

The installation of PVCu double glazed replacement windows in the front elevation of 11 Geoffrey Court, Geoffrey Rd. **Granted**

Details of a landscaping and planting scheme, submitted in compliance with Condition (1) of the planning permission dated 8 August 2005, for the alteration and conversion of the Coach House to the rear of 186 Lewisham Way (fronting Wickham Mews), to provide a four bedroom house, together with alterations to the elevations, associated landscaping and provision of a bin store and car parking space. **Granted**

The construction of a single storey extension including a rooflight to the rear of 147A Breakspears Rd. **Granted**

Details of facing bricks, namely Ibstock Funton Second Hard Imperial and natural slates submitted in part compliance with Condition (1) of the planning permission dated 5 February 2008 for the change of use, alteration and conversion of 33 Wickham Rd, together with the construction of a single storey, plus basement, extension to the rear, alterations to the side and rear elevations, including the installation of roof lights and dormer windows and formation of light wells to the front and rear, to provide 7 two bedroom and 1 three bedroom, self-contained flats, associated landscaping and provision of refuse/recycling and cycle stores. **Granted**

Details of cycle storage submitted in compliance with Condition (5) of the planning permission dated 5 February 2008 for the change of use, alteration and conversion of 33 Wickham Rd. **Refused**

Details of landscaping, paving and boundary treatments, external doors, windows and roof windows and proposed light wells submitted in compliance with Condition (7) of the planning permission dated 5 February 2008 for the change of use, alteration and conversion of 33 Wickham. **Refused**

The construction of a three storey building, plus roof space, to the side of 159 Upper Brockley Rd, comprising 1, two bedroom and 1, three bedroom, self-contained maisonettes. **Refused**  
The enlargement of the existing roof extension, the provision of a new rooflight to the flank roof slope and new flat roof rooflights to the enlarged flat roof area of 51c Wickham Rd. **Granted**

Demolition of existing buildings to the rear of 177-181 Lewisham

Way and the construction of a single to three storey terrace of 5, two bedroom houses, incorporating balconies and terraces, together with associated landscaping, provision of refuse/recycling stores, 5 cycle spaces and a new double hung timber sash window in the side elevation of the rear addition to No. 181 Lewisham Way at first floor level. **Granted**

The construction of a single storey extension to the front of 4 Tressillian Crescent. **Granted**

The change of use and conversion of 243 Lewisham Way, together with the construction of an extension to the rear at first floor level and alterations to the front elevation, to provide 6 one bedroom and 1 two bedroom self-contained flats. **Refused**

The installation of 2 rooflights in the front roof slope and the replacement of the rear dormer window with a double glazed timber framed sliding sash window at 42c Cranfield Rd. **Granted**  
The construction of three dormer windows to the rear roof slope of 30 Harefield Rd and the installation of a roof light in the front roof slope. **Refused**

The installation of PVCu double glazed sliding sash windows to Flat 9, Oaklands House, and 90 Cranfield Rd. **Granted**

The replacement of all windows and flat entrance doors to the front and rear of 1-9 Eastern Rd. **Granted**

The installation of double glazed timber sliding sash replacement windows to the front and rear of 48 Manor Ave. **Granted**

Details of landscape works (including planting, paving, walls and fences) submitted in compliance with Condition (4), soundproofing between the first and second floors in compliance with Condition (5), fabric materials of the proposed refuse storage chamber submitted in compliance with Condition (6) and roof coverings (including their colour and texture) to be used on the building submitted in compliance with Condition (8) of the planning permission dated 15 June 2007 for the construction of a three storey block with roof space adjacent to 58 Cranfield Rd, to provide 1 one bedroom self-contained and 1 two bedroom self-contained maisonettes, together with associated landscaping and provision of bin and cycle stores. **Granted**

### Appeals

The demolition of the existing building of W. P. Stone Ltd, adjacent to 1 Tyrwhitt Rd (also known as 2a Pretoria Parade) and construction of a three storey building with basement and attic storey, comprising 6, two bedroom self-contained flats and 2, two bedroom self-contained maisonettes, together with associated landscaping and provision of refuse/cycle store, and 6 car parking spaces.

### Trees

Fell a Sycamore tree, crown lift to 6m a second Sycamore tree; crown lift to 6m and remove dead wood from four Lime trees, crown lift to 6m four Chestnut trees, crown lift to 6m and clear lamp by 2m a London Plane tree, all at Alder and Lilac House, Breakspears Rd.

Crown reduce by 30%, crown thin by 25%, crown lift to give ground clearance of 6m and cut back by 2m from property an Indian Bean tree at 31a Crescent Way.  
Crown reduce, crown thin and cut back from adjacent property a Sycamore tree to the rear of 4 Manor Ave.

Crown lift to 6m. Remove three limbs adjacent to lamp and remove dead wood from nine Lime trees at Wadcroft Court, Geoffrey Rd.

Fell three Sycamore trees to the rear of 121 Tressillian Rd.  
Crown reduce and crown thin an Oak tree to the rear of 87 Upper Brockley Rd.

Fell or crown lift to 6m three Lime trees to the front of 1 Upper Brockley Rd. **Refused**

Crown reduce by 30% a Sycamore tree to the front of 28 Manor Ave

Fell a Lime tree T1 to the front of 45 Upper Brockley Rd.  
Crown reduce by 30% a Sycamore tree at 26 Manor Ave  
Crown reduce and crown thin by 25%, crown lift to give 4m

clearance from ground level and cut back from highway limb from an Ash tree to the front of Hadrian Court, 27 Breakspears Rd  
Reduce by 40% height of a row of Leylandii trees, reduce crown by 20% and prune to shape a Cherry tree in the rear garden;

selectively reduce by up to 30% and prune to shape a Beech tree and reduce a Yew tree to the front of 45 Wickham Rd

Crown reduce by 25% a Walnut tree in the rear garden at 168 Lewisham Way

Fell a Mulberry tree to the rear of 168 Lewisham Way. **Refused**  
Crown reduce by 30% a Cherry tree to the rear of 20 Breakspears Rd

Crown thin by 25%, cut back remainder from footway and telephone lines and remove up to fork epicormic growth from two Lime trees to the front of 60 Tyrwhitt Rd

Fell a Leylandii tree to the rear of 72 Breakspears Rd  
Reduce and reshape crowns by 40%, lift to 4m. remove lowest limbs from the middle tree and remove dead wood and stubs from three Lime trees to the front of 45 Wickham Rd

Crown reduce by 30% seven Sycamore trees to the rear of 173 Breakspears Rd

Fell an Apple tree to the rear of 128 Upper Brockley Rd  
Crown reduce by 30% and crown thin by 20% a London Plane tree T1 to the front of Rokeby House, 158 Lewisham Way,

Repollard two Horse Chestnut trees to the rear of 79 Tyrwhitt Rd.  
Crown thin by 20% and crown lift to 5m a Copper Beech tree,

crown lift to 5m a Horse Chestnut tree, raise and shape back from Rd three Prunus pissardii trees; remove trunk growth to 5m. remove trunk growth to 5m. and limb over light, (both unidentified trees) all at Lewisham College

### Pending

Remove an Ash, two Sycamore trees and a Sycamore sapling from the front of 77A Tyrwhitt Rd

The installation of PVCu, double glazed, replacement windows in the front elevation of 15b Tressillian Crescent

Fell a Bay tree to the rear of 98 Tressillian Rd  
Remove limb growing towards property, cut back by 3m to clear property, crown lift to 4m, crown reduce by 30% and crown thin by 20% an Oak tree to the front of 10 Breakspears Rd.

Repollard a Lime tree to the front of 92 Breakspears Rd  
The construction of a two storey, 2 bedroom dwelling house at rear of 99 Upper Brockley Rd.

The demolition of the existing buildings at Units 2, 3, 4 and 5 Ashby Mews SE4 and the construction of part one/part two storey block comprising of 5 commercial units, together with the provision of 3 car parking spaces, 13 internal bicycle spaces and refuse storage

## A lively and varied evening Brockley Society July meeting

The **Stephen Lawrence Centre** aims to inspire young people to take an interest in and contribute to the development of their environment through architecture, engineering and construction. **Derek Bardwell** of the centre in Brookmill Road told July's Brockley Society meeting.

By opening up educational pathways into the many skilled or professional activities associated with urban design and regeneration, the centre offers an educational lifeline to young people whose opportunities are constrained by economic, cultural and social hardship. The centre works with young people from 8 to 19 through links with schools and also with students in construction-related studies. For more information visit [www.stephenlawrence.org.uk](http://www.stephenlawrence.org.uk).

**Sian McLean** spoke about **Locallife Lewisham**, a website that is 'your complete guide to life in Lewisham and the surrounding area, covering all aspects of community, business and leisure'. The site consists of links, not news. Advertising is free to community groups. [www.locallife.co.uk/lewisham/index.asp](http://www.locallife.co.uk/lewisham/index.asp).

**Nick Barron** spoke about **Brockley Central blog** which is read by about 500 people every day, and also by the council. Visit [www.brockleycentral.blogspot.com](http://www.brockleycentral.blogspot.com).

**Jill Tritton** gave an unexpectedly entertaining talk about the **Francis Drake Bowls Club** on Hilly Fields and the turbulent history of bowls which was banned by both Edward III and Henry VIII. Only in 1845 did it become legal again. 'We are a community facility for the people of Brockley,' said Jill, inviting all to 'walk through the club gate into a peaceful environment' to try their hand at bowls. [www.francisdrake.org](http://www.francisdrake.org).

## 'WOOF!'

In October this year, a baby, a 50 year old woman and a group of men who tried to intervene were all attacked by an out of control dog. Unlike an incident earlier in the year when a man was killed by his own dog, no one was fatally injured. But the dog still had to be shot. The attack has brought home how important it is that dogs are controlled by their owners — not just for the safety of the public but also for the dog's own welfare.

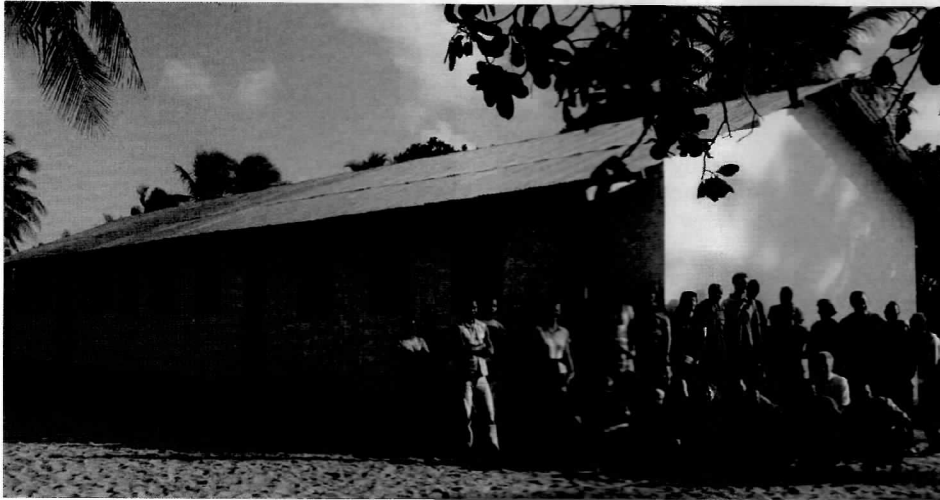
Lewisham Council has invited public comment on proposed revisions to local dog control legislation. It is proposed that an on-the-spot £75 fine will be imposed on anyone who does not control their dog in public. This will cover not just walking dogs without leads, but also allowing the dog to foul public spaces or to enter 'dog free' designated areas such as playgrounds.

We would like to see additional controls on dogs including mandatory identity chips to help prevent the abandonment of animals and the successful prosecution of anyone incapable of managing their pet. Lewisham council recently offered free i.d. chip insertion to local residents and the response was very encouraging.

If you would like to comment on the consultation document or suggest additional revisions, call 020 8314 6000 or email [dogcontrolorders@lewisham.gov.uk](mailto:dogcontrolorders@lewisham.gov.uk) before 14 November.

*Long-time Brockley campaigner Stuart Woodin writes about an exciting project he volunteered for*

## Mozambique School Project 2008



This year I became an eco-tourist! Through my firm, Scott Wilson, 45 employees had the chance to spend a month working as volunteers to build, from scratch, a new primary school for a desperately poor, but beautiful part of Mozambique called Tofo, near Inhambane on the Indian Ocean.

We were organised into three teams over three months. I was in the last group, that had to finish the school! After 30 years I was



back on a building site, albeit one with lots of children around as the new school was being built right by the existing simple huts they learn in.

Sleeping in Cabanas of four people each, we were up with the dawn (6am) and walked 30 minutes to the site over high sand-dunes and through the sandy fields. We worked until the sun was low in sky and were back at our simple Indian Ocean resort by sunset (4.45pm). All day was spent on sand, working with mostly non-power tools. The winter temperatures were mid to high 20s. By the beginning of the third week I felt very good physically with muscles I never knew existed popping out in strange places!

The project pace was relentless, guided by two experienced Quest Trust leaders. The picture (below) shows the school as we found



it after the May and June teams had done their labour. Much of our early weeks were spent constructing and placing the roof trusses, and getting the tin roof on. The team of 15 plus eight local skilled workers worked well together.

Every day one volunteer acted as day leader and I did this twice. The second time, at the beginning of the last week, I gave a rousing speech in the morning which seemed to



motivate for the last big push. I especially enjoyed the time working with a young carpenter called Grinaldo making the school furniture. The wood arrived rough cut in .3mx6m lengths which had to be cut down their length and planed – all by hand! Grinaldo taught me the importance of sharpening the blades on the two Stanley planes every few hours and how to forward saw – I got quite good at that!

One highlight was the contact with the school children. Although happy, local children don't have adults playing with them in the Western way. However, we played with them for 20-30 minutes most days until their two-week winter holiday when the site suddenly became much more 'just' a building site. Even so, Juliao, the school director and some children regularly came to visit us or wait on our route home for a bit of a rough and tumble.

When not in school the children worked in the fields or looked after younger ones (see above right). They seemed reasonably well fed, although I saw some skin problems. Rice is becoming unaffordable with average income of only \$5 day, but around the edge of a reed swamp they were growing a good range of vegetables and salad crops. Most locals lived simple agrarian lives. They

would wave from the fields and the wells and sometimes called us over to offer a coconut or some foul-tasting local delicacy. We saw the odd pig, quite a few goats, just one cow and lots of chickens. The locals cooked our breakfast and lunch by the site and we ate in one of the existing simple school-rooms.

We had Sundays and two Saturday afternoons off. On the first of these we all went on a whale safari where we soon saw lots of huge hump back whales feeding on the plankton-rich waters between Mozambique and Madagascar, dolphins, and three amazing sail fish who effortlessly kept up with our speedboat. One morning we even saw the whales on the horizon from our resort and we felt very lucky to have digs right by this amazing ocean complete with the odd bar with live music and a rising moon at the weekends.

Mozambique is really picking itself up after its dreadful 15-year civil war and a primary school is central to their nation-building. At 7am every morning the school children lined up with teachers for a flag-raising ceremony and to sing the national anthem. We joined them on our last morning before giving them a preview of the inside of the school which has now been officially opened to great fanfare and excitement locally. Built on-time and on-budget, a near miracle in Africa and with all the supply problems the three teams had. Since we left, the children have completed a garden all around the school and murals have been painted on the gable ends. My company, Scott Wilson, has made a five-year commitment to school books and maintenance.

After my experience, traditional summer holidays are going to seem quite tame! Certainly, picking up the pace of life again living and working in London was not easy.



However, it was so good to have this opportunity and to spend time in this amazing community, to have a glimpse of how so much of Africa still lives and to know that the school will be such an important resource for the whole community. The volunteers left a lasting impression and the land and the people have left a lasting impression on me. There is a magic in this corner of Africa that is hard to convey. Do go while it is still unspoilt!

**For more information visit:**

[www.tofoschool.blogspot.com](http://www.tofoschool.blogspot.com)

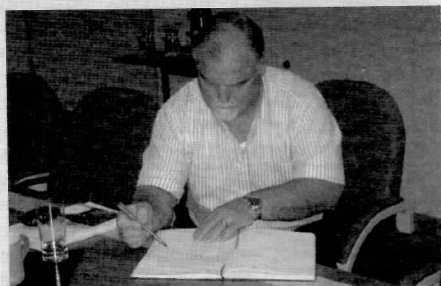
[www.questtailor-made.com/scott\\_wilson\\_millennium\\_school\\_project.html](http://www.questtailor-made.com/scott_wilson_millennium_school_project.html)

*My heartfelt thanks to all those in Brockley who supported my fundraising and encouraged me to get out of my comfort zone and take part in this project!*

Stuart

## Hilly Fields Park Playground Update

The User Group along with the help of some active local parents who organised a petition, have submitted a bid for the Central Government Playbuilder funding.



**Cricketer Mike Gatting signs the petition**

Lee and Ruth also prepared the Hilly Fields presentation that was shown to the Mayor at a Playbuilder event at the Civic Suite in September. We are still awaiting news.

We have news of our success in Stage 1 of a competitive Big Lottery grant scheme with our application 'Wild About Play'. Getting through Stage 1 is a great achievement but we cannot know whether we will be successful at Stage 2. We are working now to develop plans further and to submit the more detailed Stage 2 bid.

## Hilly Fields Park Bird Champion Project

In 2007, Hilly Fields Park was chosen as a pilot project for Natural England's Access to Natural Greenspace Standards (ANGST). As part of the funding from Natural England, Greenscene at Lewisham and Glendale, the council's parks contractors, have initiated the 'bird champion' scheme. Pupils from Gordonbrock School came to the park and surveyed birds and back at school did drawings, some of which were selected for a poster that was used in the park for advertising the project. Our Bird Champion Keith has been busy, not just filling up the bird feeders and surveying the birds, but setting up a blog. Check [www.hillyfields.blogspot.com/](http://www.hillyfields.blogspot.com/). The latest news is that he has arranged for Hilly Fields to be linked into the Bird Track Organisation site.

### EDITOR WANTED

Do you want to gain valuable experience in managing and editing? Do you care about your local community? Have you ever looked at a newsletter and thought: 'I could do this better'? We are looking for a new editor for the BrocSoc newsletter. Previous experience is not essential and this is your chance to revamp one of the public faces of this community and make a difference. *For more information, contact Clare on 020 8692 3829.*

### Shiatsu

Michael Woolley MRSS

16 years' experience successfully helping with back, neck and shoulder problems, RSI, headaches and migraine, menstrual problems, fatigue and stress.

Brockley Practice  
and  
Home Visits

Tel: 07941 551356

[shiatsu@michaelwoolley.com](mailto:shiatsu@michaelwoolley.com) [www.michaelwoolley.com](http://www.michaelwoolley.com)

## Friends of Brockley and Ladywell Cemeteries

The FOBLC is a voluntary group dedicated to helping protect and improve the beautiful and historic Brockley and Ladywell cemeteries. It meets every other month, alternating general meetings with committee meetings, on the third Tuesday or Wednesday (see diary below)

Volunteer workdays, under the supervision of the Council Bereavement Services staff, generally take place on Sundays in alternate months. The latest FOBLC workday saw volunteers cut back brambles from perimeter paths. The next workday is a litter pick on Sunday 9 November, starting at 10am.

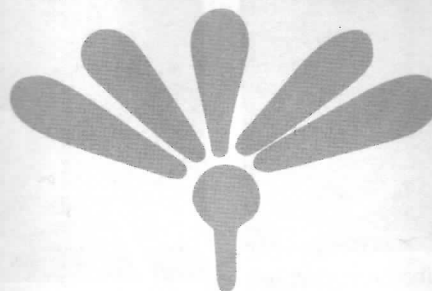


Membership is just £3 a year. To join send a cheque or postal order, made out to FOBLC, to: Bob Clark (FOBLC), 40 Ansdell Road, London SE15 2DS. Please also enclose your address and email.

For details of future workdays and meetings please see [www.foblc.org.uk](http://www.foblc.org.uk).

## New Cross Natural Therapy Centre

where experienced practitioners offer different ways to support your health and wellbeing



Established 1985

[newxtherapy@btconnect.com](mailto:newxtherapy@btconnect.com)

[www.newcrossnaturaltherapy.com](http://www.newcrossnaturaltherapy.com)

394 New Cross Road SE 14 Tel :020 8469 0858

**Kitchen and bathroom refurbishment from  
design to completion**

**Central Heating – Extensions**

**Plumbing and Electric**

**Carpentry – Plastering – Decorating – Tiling**

**No call-out charge – Free estimates**

**Local references available – All work guaranteed**

**40 years' experience.**

**Len Bintcliffe**

**Tel 07976 579 721 020 8331 0776**

## CHERRYLI NURSERY

### Looking for a nursery?

Comfortable and homely baby unit for babies 6 months and up

Nursery places for children aged 2 to 5 years

Come and see us at Cherryli

We are an independent nursery, owned and managed by a qualified teacher. We have a small, committed team of staff who will care for your child in a creative, homely environment.

[www.cherrylinursery.co.uk](http://www.cherrylinursery.co.uk)

- Caring, friendly staff
- Structured, stimulating environment
- Fresh, home-cooked food
- Beautiful hand-crafted wooden interior
- Reasonable prices
- Variety of structured activities and free play
- Childcare vouchers accepted
- Large secure garden with play area

40 TYRWHITT ROAD  
LONDON SE4 1QG

Walking distance from St John's BR station  
and bus routes 21, 436, 136 & 321

Open weekdays 8am to 6pm

We will be happy to show you around any time

020 8691 0497



## Local Tradesman Fully Insured Carpentry and Joinery Building and Maintenance

- \* Fitting kitchens and bathrooms \*
- Painting and decorating \*
- Laying wooden, laminate and tile floors \*
- Mosaic floors \*
- Repairing and replacing sash windows \*
- Fitting doors and windows \*
- Plastering \*
- Replacing ceilings \*
- Tiling \*
- Garden decking

**Mr S Goodison**  
07963 897 802  
020 8692 0260

## Helen Acton MBACP Psychotherapy & Counselling

The Sunflower Centre, Brockley SE4



Email: [helen.acton@mac.com](mailto:helen.acton@mac.com)  
Tel: 020 8694 1122

Web: [www.helenactontherapy.com](http://www.helenactontherapy.com)

## CATS @ HOME

Formerly Pet and Plant Nannies, established 1986

We care for your cats in the comfort and security of their own home during your absence. We provide a reliable, trusted and confidential service recommended by Veterinary Surgeons and endorsed by our many satisfied clients. References are available and we are *fully insured*.

*If your best friend does not enjoy your holiday contact*

Carole Leonard - Steve Humphryes - Viv Hutter

Telephone 020 8692 0023

email [viv@cats-at-home.com](mailto:viv@cats-at-home.com) - website [www.cats-at-home.com](http://www.cats-at-home.com)

*We will be happy to discuss your cat's individual requirements*



## Acoustic Guitar Courses

Thursday evenings in Brockley  
10 week course, £60 per course

Beginner folk/pop 7.00 - 8.10

Improvers folk/pop 8.15 - 9.30

JACQUELINE 020 8694 1409

## The Gardening Doctor.co.uk

'Nitrogen for shoots, phosphorus for roots, potassium for flowers and fruits'

### Dr Jim Kelly

Bsc Msc PhD MInstP CPhys (Director)

130 Breakspears Road

Brockley

London

SE4 1UA

T: 020 8305 6571

M: 07745 448 137

Hard landscaping

Horticultural advice

Shrub & tree planting

Flower border husbandry

Water feature construction

Seasonal lawn & hedge care

Patios and container planting

Garden maintenance and weeding

Summerhouses, greenhouses and sheds

**your first choice in garden care**

## DYSLEXIA

TUTORING AND ADVICE FOR CHILDREN AND ADULTS

20 years experience

### Simon Aston

B.A. M.Phil. PG.C.E. Dip.Spec.Ed. M.B.Ps.S. A.M.D.A. Dip.Law.

Tel. 020 8691 7076

Email: [simonaston@london.com](mailto:simonaston@london.com)



## Painting and Decorating



### Cornice & Period Feature Renovation

For a Professional and Courteous Service call

Ian Hibbert

020 8690 5624

07770 753 177

Free quotations  
Reference available

e: [ian.hibbert@btconnect.com](mailto:ian.hibbert@btconnect.com)

Oil paintings of local Brockley views (and many other paintings) by TV artist **Leo Stevenson**



Viewable by appointment only - call 020 8694 0128

email: [thesunflowerman@btinternet.com](mailto:thesunflowerman@btinternet.com) web: [www.leostevenson.com](http://www.leostevenson.com)

- Also available as signed prints and greetings cards!

# Rosie Riley



## PLUMBER

### Handywoman

20 Years Experience

Tel: 020 8692 3375

Mobile: 07932 566 039

FREE ESTIMATES

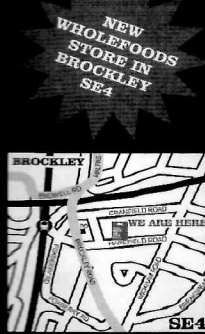
New wholefoods store and mini-pharmacy (vitamins/supplements/tinctures). Stocking a wide variety of **organic fresh produce**. Fair-trade. Vegan/Vegetarian Society approved products to include wheat/gluten/dairy and egg-free ranges.

Part of the Real Nappies for London campaign and stockists of a broad range of baby products alongside a wide variety of everyday food items & ecological cleaning products.

No 7a Harefield Road  
Brockley SE4 11W  
t. 0208 6922175  
e. theshoponthehill  
@hotmail.com

Mon-Fri 10am to 8pm  
Sat & Sun 11am to 5pm

# THE SHOP ON THE HILL



Free parking, wheelchair accessible. We accept most major credit/debit cards



**BROCKLEY'S  
BEST  
BUILDERS**



From roofing to gardening & all trades in between - Call the three busy bees...

~ ALL LOCAL TRADESMEN ~

Free quotations & checkable references on request

Call - 07880 923 155 Email - 3bees@live.co.uk

## CLASSICAL OSTEOPATH

NEIL FENNEL *mico.do*

Helping in SE4 since 1992

osteopathy, cranial, reiki, reflexology

Professionails 193 Brockley Rd

020 8691 1051

## The Sunflower Centre

Complementary Health and Lifestyle

**Osteopathy, Massage Therapy,  
Fully equipped Pilates Studio,  
Acupuncture, Homeopathy,  
Yoga and Pilates, Reiki,**

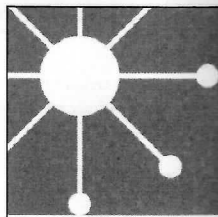
**Counselling and Medical Herbalism,  
Hypnobirthing & Antenatal classes**

All therapists can help a variety of acute and long-term problems. We aim to provide family health care from birth into old age.

- all types of aches and pains
  - general wellbeing ● stress and anxiety
  - skin, hormonal and digestive problems
  - ante and postnatal care; newborn check-ups
- Full disabled access and facilities

81 Tressillian Road, Hilly Fields  
Brockley SE4 1XZ 020 8694 2714

www.thesunflowercentre.co.uk



# dandelion blue

Love food.

Come to our delicatessen, opposite Brockley Train Station, and try some of our cheeses, meats and antipasti while stocking up with good food for the week.

Fresh Bread Daily      British and European Cheeses      Cured meats  
Fresh Organic Fruit and Veg      Marinated Olives and Antipasti  
Fresh Organic Meat      Free Oil Refills      Pre-Order Joints of Meat  
Global Wine Selection      Open Everyday      Credit Cards Welcome

5 Coulgate Street, London, SE4 2RW. 020 8692 0722. lovefood@dandeliondeli.com

## Website Design

call Sara on

07931 567 259

www.webble.co.uk

## C.J. Property Maintenance & Repairs .

**Builder, Carpenter,  
Painting & Decorating,  
Restoration work  
- Home Improvements  
Comprehensive Fitted  
Kitchen Services.  
Landscape Gardening,  
Walls, Fencing, Patios,  
Paths & Ponds etc.**

Exterior painting and repointing,  
Insurance work undertaken  
*Please ring Colin Brooks for  
free advice & estimates on*

Tel: 020 8699 9030

Mobile: 07799 794 685

## Superb Guest House in Heart of Brockley

St James's Guest House,  
48 Breakspears Road,  
Brockley, London SE4 1UL

Tel: 020 8691 1206.

Fax: 020 8691 0150

Mobile: 07956 403692

email: mail@sjguesthouse.co.uk

Website: www.sjguesthouse.co.uk

- Family run business
- Warm, friendly and homely atmosphere
- Strictly "No Smoking"
- Prices are very reasonable
- Free transport on arrival and departure to local stations

## Alexander Technique

Individual lessons, introductory workshops

Michelle Cole (MSTAT)

020 8690 0801

079 4003 3728

m.cole@gooduse.com www.gooduse.com

## grassroots pilates Pilates

### Brockley & Greenwich

Group classes or private tuition

Learn to move easily & correctly, dynamically & energetically; Suitable for all ages and fitness levels, from the fit athlete to the couch potato. Mixed ability/pre-post nata/over 60's/men only

## Kathy King

Body Control Pilates Association  
Register of Exercise Professionals

www.grassrootspilates.co.uk  
kathy.king@btpopenworld.co.uk  
07890 054 772

## ADVERTISEMENTS

Small 3.6cm x 6cm £15  
Medium 7.5cm x 6cm £25  
Large 12.4cm x 7.6cm £40

READERSHIP 8000

To advertise, email clare@sumner-type.co.uk or phone Clare on 020 8692 3829.

All ads must be prepaid.

Cheques to Brockley Society, 102 Tyrwhitt Road, SE4 1QB.