

# BROCKLEY SOCIETY

Issue 111 October 2007  
Charity No: 1004245

Delivered free to 4000 households  
three times a year



## Gillian Heywood MBE

Congratulations to Gillian Heywood (left), Brockley Society stalwart and long-time resident who has been awarded an MBE for 'Services to the community of Brockley'. She describes below why she received the award.

I would like to thank those who nominated me, but credit should go to the people I have worked with over 37 years to improve Brockley, both the built and living environment.

My jobs have been housewife, bringing up two children, teaching Maths in local secondary schools until this year, and running the Duke of Edinburgh Award for the last 14 years, including six expeditions a year all over the country.

My philosophy is that our quality of life depends on and is greatly influenced by the place in which we live and work: the better the place, the happier people will be. So I have always tried to improve the environment, to keep what is good and make the bad things better. If I felt the authorities were wrong, I fought to overturn their policies and get things right for Brockley. I have always persevered and won't take no for an answer.

The Brockley community could not have achieved so much had we not worked together. The concerted efforts of so many residents over the years who have worked with me and given their time and expertise unstintingly have made Brockley a better place: architects, editors, planners, lawyers, marketing executives, ecologists, artists, businessmen, landscape architects, arborists, fair organisers, librarians, journalists, surveyors, accountants, musicians, printers, tunnellers, secretaries, web designers, archaeologists, and many more over the years who have had the time and energy to help.

I have just been the one who has been here all the time and kept at it for longest!

## History of Brockley Society

BroSoc started in 1974 partly in response to the idea that 'nothing ever happens in Brockley'. A group of residents met and decided to run a newsletter and a traditional Fayre on Hilly Fields, to be financed by a waste paper collection once a month. Our first chairman, John Morland, had the ideas and the will to get things started.

## Campaigns we have run

**1974** Our first fight with the Council was to let us, an unknown group of people, run a Fayre on Hilly Fields. After the first one in 1975 it became easier. The next fight was to stop demolition of 61 Breakspears Road and of St Peter's Hall.

**1976** We helped St. Peter's Church to fund and run the hall, which had fallen on hard times. Together we set up a committee which raised annual grants from the Council to run it as a Community Centre, as there was no other suitable venue in the area. We refurbished the hall, set up new activities, and supported those already there. It was well used, with discos, meetings, clubs, badminton etc. Sadly, the hall was sold in 2002 and we have lost one of our community assets.

**1976** The Council had plans for a housing development on the gardens backing on to Wickham Mews. We persuaded them to abandon the scheme. Ever since, developers have been trying to develop the Mews for residential use, to get more profit from houses converted to flats. We have campaigned against this for 28 years. Finally, in 2006 the Council stated that there will be 'a presumption against residential development in the Mews.' Have we won? Can we now have a comprehensive scheme of lighting, parking and garages to tidy up the Mews and get cars off the road?

**1983** Our local beat policeman, Derek McCaig approached me about setting up a Neighbourhood Watch - a completely new idea. BroSoc and Brockley Police set up the first Neighbourhood Watch in London,

turn to page 2

## Brockley Meetings

### Brockley Society Meeting & AGM

Tuesday 13 November, 8pm  
St Andrews Centre, Brockley Road  
(corner of Wickham Rd) SE4 2SA

Light refreshments

### The Buildings of Brockley Conservation Area. How can we preserve and enhance our houses?

An illustrated talk by Jan Mondrezejewski and  
Justine Page of Lewisham Planning Department.  
followed by Brockley Society AGM  
Your chance to make a difference to the area you live in.  
Or just come and listen

Next Brockley Society meeting  
Tuesday 18 March 2008, 8pm  
St Andrews Centre (tbc)

Hilly Fields Park User Group meeting  
Tuesday 4 December, 7.30pm  
The Bothy, Hilly Fields

### BroPanto trip

For details contact  
Deb on 07753 776 834  
or email badjer@fastmail.fm

Copy deadlines for newsletter:  
1 February, 1 May, 1 October  
to clare@sumner-type.co.uk

Farmers' Markets on Hilly Fields  
Second Saturday of each month  
10am-3pm

## BROCKLEY SOCIETY

Chair	.....8692 5027
	prbyrne@clara.co.uk
Fayre (general)	.....8691 5023
Newsletter	.....8692 3829
	clare@sumner-type.co.uk
Newsletter distribution	.....8692 5027
Police liaison	.....8692 6977
Transport	.....8691 1463
Local history	.....8692 6977
Planning & highways	.....8692 6977

Everyone living in the Brockley Conservation area is automatically a member of the Brockley Society. The Brockley Society welcomes all.



Congratulations to Mark Sheahan who has been appointed the first 'Inventor in Residence' at the British Library's Business and Intellectual Property Centre.

So what does a resident inventor do and why the British Library? 'About 57 million patents are held at the library,' said Mark. 'It is a fantastic facility for patent searches, marketing material and free workshops, and has ties with London's six clubs for inventors

and entrepreneurs. There is a real buzz at the Library.'

The clubs give budding inventors the chance to meet people who have gone through the process and helps them avoid the sharks, and wasting time and effort. 'We inventors need to get out more,' Mark said. 'People can book a free one-hour session with me as inventor in residence, to look at their project under complete confidentiality and give my thoughts, and hopefully point them in the right direction. In my own experience, inventors can also become too focussed, so it's an opportunity for a reality check, although I am here to nurture creativity, not judge. The people I mentor vary between inventors, innovators, and entrepreneurs and I am glad to report that inventing and enterprise are alive and well in the UK!'

Mark showed his inventiveness as a boy

turn to page 2

possibly the first in the country, and the start of community policing. After some decline, mainly due to lack of police funds, the scheme should soon be running again with a new coordinator.

**1988** The new inspector at Brockley Police Station proposed that volunteers could run the front desk, closed by then. Eleven volunteers were trained as Station Officers; four are still there and new people have joined us. We intend to run the station until the powers-that-be have other plans for the Police Station building.

**1989** The government proposed that the Channel Tunnel/Rail Link (CTRL) from Folkestone to Waterloo should run under Lewisham, emerging at Brockley Cross. We thought this would ruin our area: the sand and gravel geology would cause our houses to subside and fall down. Our vigorous campaign soon extended over the whole route. Our alternative suggestion, through the Essex marshes to Stratford and St. Pancras, would help the redevelopment of Stratford and join with major routes to the north and Scotland. It took several years, but we achieved our goal.

If tunnel shafts were to sprout on Hilly Fields, we at least wanted control of the design. At about the same time there were plans to build on the high land above Brockley Station, destroying the wildlife corridor along the railway. We persuaded the Council to extend the Brockley Conservation Area to include both these sites. So Hilly Fields, the school building (now-listed), Brockley Station area and Brockley's oldest buildings in Coulgate Street are protected from demolition and unsuitable development.

**1990** Lewisham Council rationalised its libraries and shut the three Carnegie libraries in the old Metropolitan Borough of Deptford. The largest, a listed building in Lewisham Way (now used as the Art House) was to be sold to the highest bidder with no public access. After the interior was wrecked by a squatting rave party group and looted by antique dealers, we set up a campaign to force the Council to install security guards. We proposed it be used as a borough museum and art gallery - we have neither in the borough - and drew up detailed plans and costings. But the Council still wanted to sell the building. When the artists' group based in what is now Prendergast School needed a new home, we persuaded the Council that they would not have to pay for security if the artists moved in. They are still there and this seems to be a relatively satisfactory solution, at least for now.

**1999** Polly Ionides suggested that a stone circle be erected on Hilly Fields to mark the Millennium. I suggested it should also be a sundial and worked out the positions of the stones to make an ellipse for telling the time. BrocSoc embraced the ideas, funds were granted, stones were collected from Scotland, and we organised heavy lifting gear to create the Millennium Stone Circle. A huge success which will be with us for a very long time. (There is a booklet telling the story of the creation of the Stone Circle - see page 6.)

**Local History:** From 1971, as I walked the children to school past a variety of architecture styles, I became interested in Victorian buildings and their designers. Soon after BrocSoc started we set up a group to research the history of the Conservation Area and had an exhibition in the Lewisham Way library. I intermittently continued to delve into old records and now have a lot of information. I have given several illustrated talks, but have not yet written the book - one day!

I have represented BrocSoc on the Borough

Conservation Advisory Panel since 1983 and on the Design and Conservation Panel, researching and commenting on all planning applications in Conservation Areas and Listed Buildings. I have also been the lay advisor for Lewisham to the Civic Trust for the Architectural Heritage Awards for ten years and treasurer for Lewisham Environment Trust for 15 years.

I really enjoy what I do and have made many friends in the area through our common goal - to make Brockley the best!"

## The Brockley Foxes

Days are shortening and evenings lengthening, the trees on Hilly Fields are touched with gold and the Brockley Foxes have again been sampling the fare at local eateries. Padding quietly into a variety of restaurants, eating heartily and slipping back into the ancient thoroughfares of Brockley, the foxes would like to share some of their opinions with newsletter readers.

Wanting to sample something exotic and different, the foxes visited **Tapastry** a simple Spanish tapas venue (39, Honor Oak Park, SE23 1DZ. Tel: 020 8291 2822) to enjoy the free bottle of wine for every six tapas ordered on a Monday evening. After the not unusual problem of having to request that the music be turned down, (extra loud heavy metal blasting out for just a few quiet conversing customers!), we chose a selection of 11 tapas. The friendly waitress told us that if we ordered another dish we would be entitled to a second free bottle of wine. So we ordered a twelfth dish and received our two bottles of excellent free Spanish wine. Disappointingly, the tapas arrived on cold serving dishes and although a few were reheated when requested they were still cool. The dishes are however reasonably priced and some were very tasty, although we felt others were a bit skimpy. Good value, very good wine, the ambience was a little austere and rather chilly although we were not there on a busy evening - worth a second visit. The restaurant is regularly offering special deals to the one we sampled via the Toptable web site

What a reliable presence the **Brockley Barge** is! Having planned to visit another restaurant only to find that it had stopped serving; the foxes worried that they would go hungry, so stepping into the welcoming atmosphere of 'The Barge' was reassuring (184 Brockley Road, SE4 2RR. Tel: 020 8694 7690). The smoking ban was not yet in force when we visited, but now that it is the atmosphere should be improved. We happened upon 'Grill Night': £5.99 for a rib-eye steak including a glass of red wine. With efficient friendly service, surrounded by locals enjoying a drink and a meal, it has all the qualities of a good local pub, albeit a Wetherspoons. Other steaks came with 'French' style chips and a salad (praised by one diner as 'excellent - not a bit of iceberg in sight') with a pint of best included. A well presented formula, well trained staff and generous portions make Grill Night a very good value evening. One of our party pointed out that 'Curry night' offering a similar deal is even cheaper. The only word of caution: the steaks can be variable and the real ales are often not kept at their best. But where else locally can you eat and drink for such a modest price?

Another Brockley restaurant, the **Tai Wu** was featured in a *Times* supplement some months ago where it was described as a

during the severe winter of 1963 when he built an igloo with friends in the middle of Tressillian Crescent. Later he rebuilt cars in his spare time and wrote and published a book called 'How to prepare and spray your car body successfully'.

Nowadays Mark's inventions are primarily to do with packaging closure technology, such as the "Squeezeopen" (tm) easy-open and close containers which can be opened with one hand, suitable for shoe polish, hand cream or coffee, to give three examples. He is also developing a new Squeezeopen (tm) with a thermoplastic elastomer seal and lockable means. 'This will be child resistant yet easy-open - the holy grail of packaging. Also, it now means that I can move into the food storage (think Tupperware) and drinks market - it's a very exciting time,' said Mark. 'Another packaging closure I have developed is called 'Popi' (tm) which has a fun hidden opening action and tamper evident means and is targeted at confectionery, such as Smarties and M&Ms.'

Mark travels all over the world - 23 countries in the last two-and-a-half years, often with trade missions. He has sold licences in America, Japan and UK and was awarded the top prize - Grand Prix - out of 1,500 entries at INPEX 2003, America's largest inventors' show. He spoke at BrocSoc's AGM shortly after (see newsletter No.99). He writes a monthly column in the Engineering Technology magazine

'I love what I do with a passion and enjoy the company of inventors, as I like "doers". Invention club meetings are attended by every denomination from the very young people to older people, large and thin, black and white. All work well together as they have a common interest in inventing or starting up a new enterprise.' It can be complex and scary following your dreams and I hope in some small way to give a steer in the right direction for budding inventors, as Inventor in Residence,' he concluded.

• British Library's website: [www.bl.uk/bipc/index.html](http://www.bl.uk/bipc/index.html). Book a free consultation!  
Mark's website: [www.squeezeopen.com](http://www.squeezeopen.com)

Vietnamese and Chinese venue. We felt a visit was essential. It is a pleasant family-run Chinese restaurant at 82 Brockley Rise SE23 1LN (Tel: 020 8690 8790). The owner-manager informed us they have been there for 19 years and our friendly waiter was his son. We found ourselves rather crowded round a table booked for six, and the restaurant was only half full. We thought the restaurant could make better use of its space.

The extensive menu appears to be entirely Chinese. We started with crispy duck for six plus six dumplings. The duck was a little disappointing, lacking crunchy texture and a bit dry. We then shared a selection of main courses with egg fried rice. In general the dishes were thought good, especially the shrimp, the War Tar fish in batter and the lemon chicken. The vegetables were also complimented. However one of our party felt some of the dishes lacked intensity of flavour and some had lost that 'just cooked' sizzle. Two of our group from Canada (yes the fame of Brockley's eateries has spread far and wide) thought that for London this restaurant offered very good value for money. The house wines were Piat d'Or at a reasonable price (less than £10).

Overall we felt that this was perhaps the best of our local Chinese restaurants, although the food falls some way behind the Chinese meals you get in Wardour Street.

# Celebrate Hilly Fields!



Wendy Atilla has been Hilly Fields' full-time park-keeper since May 2007 - and it has made a real difference. 'I now see new faces using the park, spending time strolling around. The clean area draws them in,' she said.

Wendy's day starts at 8am, ending at 9pm during the summer months and 4.30pm in winter. 'My main work is picking up litter and being the eyes and ears in the park.' She ensures teenagers keep off the children's playground and the gates are closed to keep out dogs.

One of her biggest challenges is cigarette butts and food containers in the play area and around the gym frames. Term time can be worse than the holidays and she would like to address a school assembly.

Many events take place, like the Saturday Hilly Fielders football club, the Farmers' Market and informal sports. 'I take plastic bags down and really appreciate help of the participants in picking up their bottles and rubbish,' Wendy said. She also watches out for fly-tipping and graffiti.

The park is well used for football, tennis, dog-walking, jogging, picnics at the Stone Circle, and much else. 'There is a good variety of trees and wildlife. I have seen two kestrels, and robins nest in the bush outside my office. We will soon be putting birdseed in the hanging feeders.'

'I am really keen for the park to get the Green Flag - as a clean, healthy, safe and happy park,' Wendy concluded.

## Dog Awareness

The Animal Welfare Officer from Lewisham attended the last user group meeting, following reports of problems with 'anti social' dogs. She said that if there were any incidents of dogs attacking other dogs, or people, they should be reported to them, even if it is the next day. Stray dogs could also be reported and they would try and pick them up. Their contact number is:

**ANIMAL WELFARE 020 8314 2098**

*A dog awareness day in Hilly Fields is planned - watch for notices in the park*

Ted Beale (left) and Wally Hill are the Glendale staff who maintain the Francis Drake Bowling Green. If you want to know how the bowling green remains like smooth velvet, watch how they mow, roll and water the grass to keep it in prime condition for the enthusiastic club members. Bob, who lives nearby, also maintains the green as a volunteer.



Hilly Fields is part of the wide-ranging patrol area for Community Support Officer Abdul Glover (below). 'I think things have improved,' said Abdul. 'A regular park-keeper and our community patrols help.' The horses from Lewisham police station also come to Hilly Fields for exercise.



## Brockley's jewel

Enthusiasm for Hilly Fields dominated the July joint meeting of Brockley Society and the park users' group. St Andrews youth centre, the park-keepers and nearby residents were all represented. Ideas flowed freely, with many exciting suggestions, including the impressive Overall Development Plan the users' group has created. Rachel Mooney describes the users' group below.

## How you can get involved

The Hilly Fields Park User Group meet every three months to discuss issues and concerns relating to the park. A development plan was agreed in 2006 laying out the areas for attention and improvement.

The first development project was the Eastern Road Gate. The group applied for a Lottery Grant from Awards for All, for a new gate and railing to the entrance and associated planting. With the help of children from Gordonbrock School, the shrub bed and verges were planted with shrubs and herbaceous plants, including holly, guelder rose, roses, native ferns, primroses and red campion. This Autumn the planting will continue as Glendale have a supply of bluebells and snowdrops which the school children will plant along the embankment and in the woodland.

We are still looking for funds to pay for the less glamorous granite sett crossover underneath the gate. The project created interest from Francis Drake Bowls Club and they are now working with Prendergast School and the artist/blacksmith Heather Burrell on new gates for the bowling green.

We hope our plans to improve the ecological habitat and maintenance in the park will be helped by Greenscene at Lewisham who have applied for funding from Natural England and the GLA that will help improve the biodiversity of the park and pay for an ecological adviser. The group has recently applied to the Ladywell Ward Fund for an outdoor table tennis table, to be sited close to the tennis courts.

We have arranged a few events, the dawn chorus, the wildlife walk and the history hike and are keen to see more events in the park. We are hoping to arrange for someone to come and divulge the secrets of winter tree identification, but have not got everything confirmed yet. We are also trying to get a drama project off the ground with the youth group at St Andrews, so hopefully we will have drama in the park next summer.

We are keen for more people to come to the meetings and be involved, especially anyone who has expertise on fund raising and applying for grants!

**Our next meeting will be in the Bothy on Tuesday, 4th December at 7.30pm All welcome.**

## Letter

Now that I have twins who use the playground, I find that they are constantly picking up cigarette butts from around the picnic tables in the play area. From my observations the main culprits for this mess are older pupils from Prendergast! It just shows how old I am - I would have been caned for smoking in school. Is it possible to ban smoking in that area? Ian

*Hilly Fields might have been built up with houses instead of being an open space if local campaigners had not intervened in the late 19th century. Gillian Heywood describes how it happened.*

## The campaign to create a recreation ground

Part of Hilly Fields is in what was the parish of Deptford and part in Lewisham, so both districts were involved in creating this important open space.

Deptford was an industrial and shipbuilding town on the bank of the Thames. By 1850 it had grown as far south as Lewisham Way, and in 1853 St John's Church was built.

Lewisham was a linear village, which stretched from where Lewisham bus station now is almost to Catford, with the parish church at its centre at Ladywell. In 1856 the Crystal Palace was moved from Hyde Park and rebuilt at Sydenham and Anerley expanded around the new park.

What is now mainly the Conservation Area, north Brockley, was farms - Bridge House Farm, Manor Farm, Edmund Hawkes' farm, fields of pear fields, market gardens and the glebe of the Vicar of Lewisham.

By 1836, Mr John Edmond Lee lived at his brickfields at Loampit Hole, (now Undercliff and Overcliff Roads). He purchased 52 acres, including the north part of Hilly Fields, and used most of the land for brick fields, siting the settling tanks on the flat area which later became a cricket field when the area was opened to the public.

By 1880 the land from Lewisham Way to the back of Hilly Fields Crescent, but not Hilly Fields Crescent itself, had been developed into large houses. In 1884 the school on top of the hill was built for 150 boys and within a few years became the West Kent Grammar School. It is now Prendergast School for girls.

In 1887, a writer for the Times used Mr Charles Booth's statistics, which showed that the area between Blackfriars and London Bridge had the highest percentage of the poor (68%) in London, while the riverside from Deptford to Greenwich had the second highest: 65% of the inhabitants were categorised as poor. This meant crowded living - 213 persons per acre! In north-east Deptford, there was the new Deptford Park, but no other open space of any size in the parish.

The area at the top of the hill occupied by brick fields and arable fields, known as Hill Fields or Daffy Down Dilly Fields, was considered the ideal site for a recreation ground, to serve

Deptford town 1 mile away, Lewisham and Brockley. Plans already existed to develop the whole area, so a campaign to retain it as open space for an already densely built town was timely.

A year later, in 1888, a local committee had been formed with the aim of acquiring this land as a Recreation Ground for South London. In 1889 the committee approached the London County Council (LCC) who referred it to the Parks and Open Spaces Committee for a feasibility study.

These were local residents who clearly knew how to publicise a campaign, and they persuaded a joint group of the Kyrle Society, the Commons Preservation Society and Metropolitan Public Gardens Association to approach the LCC, so the lobbying was more forceful. The LCC said - good idea - no money.

The societies and local groups combined and went ahead to seek optional contracts for the purchase of the land:

J E Lee	34 acres
Vicar's Glebe	4 acres
New London Development Association (freehold Bridge House Estate)	7 acres
<b>Total</b>	<b>45 acres</b>

Mr Lee's land stretched south from the back of Crescent Way to the top of the hill. A swap was done so that a row of houses could be built facing the new park - this became Hilly Fields Crescent. The Bridge House Estate owned the land south and west of the brickfields. They sold some of their land for the park and some for housing - this became Montague Avenue. They had already developed the area around St. Margaret's Road and had had plans to cover the south side of the hill with houses, but this was stopped.

The east side of Hilly Fields was owned by St. Mary's Church, Lewisham, as the Vicar's Glebe. This smaller part was incorporated into the park and the Vicar's Hill houses were soon built, again to face the Park

Greenwich Borough, which administered Deptford, promised £7,000 but Lewisham Borough said no, the LCC ought to pay. Lewisham finally paid £2,800 with a very bad grace. But it should be emphasised that one fifth of the cost was raised by local subscriptions. The people of Brockley gave generously to secure a park on their doorsteps.

Finally, in February 1892 the LCC promised £22,000 to obey parliamentary power. This is how it was paid for:

LCC	£23,572
Greenwich	£7,000
Lewisham	£2,800
London Parochial Church Trustees	£1,500
Lewisham Parochial Church Trustees	£1,000
<b>Private Contributions</b>	<b>£9,000</b>
<b>Total</b>	<b>£44,872</b>

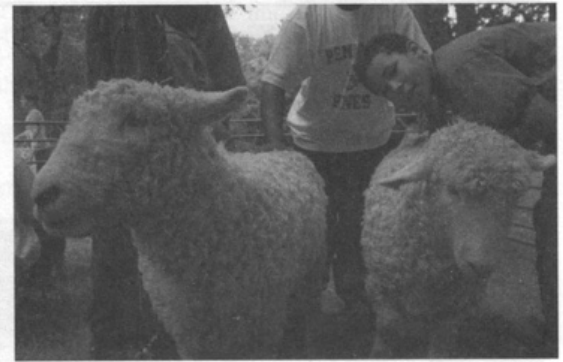
The £9,000 included £1,000 from the Kyrle Society and some from the City Livery Companies but many local people subscribed, giving from 2/6 to £500 each.

The park was laid out mainly to grass, with an excellent cricket pitch, bandstand, and granite drinking fountains. It cost £150 less than the estimate of £4,785. Ditches were filled but hedgerows left, brickfields levelled for the cricket pitch and some land drains laid as the hill has a clay cap and there were soggy patches. Paths were land surfaced on the old tracks which had been impassable in wet weather.

Hilly Fields recreation ground finally opened on 16 May 1896.



# Hilly Field



Hilly Fields, Brockley. These fields are nearly opposite to

PLAY  
IT'S BI

Where a  
and hav  
good tin  
Fields ri  
Woods :

T

Prendergast School as it used to be. Thanks to Polly and Bob from Friends of Brockley and Ladywell Cemeteries who found this historic postcard and to Nigel from Dudley for letting us use it.

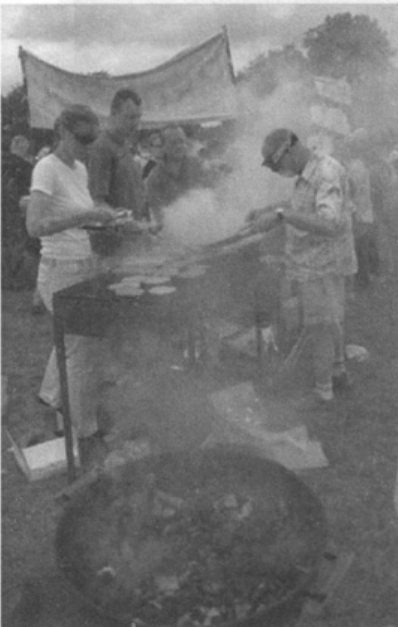
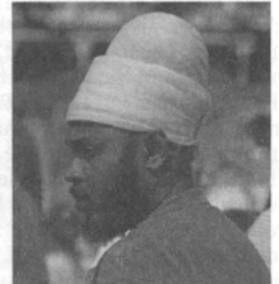


# Summer Fayre 23 June 2007



The Hilly Fields Summer Fayre was a wonderful day again this year. We had a huge selection of stalls in the marquee and out on the field, and the entertainment in the arena included all the old favourites: steel band and salsa, singers, tug-of-war and karate. A new event was the falconry display. All were thrilled by the peregrine which swooped in low over the crowd at nearly 100 miles per hour to pounce on the treat the trainer held for her. Luckily she didn't spot the members of the other big attraction of the day - the mobile farm, so all the little chicks and ducklings had a safe day, and the children had a happy day playing with them.

The Fayre is one of the things that makes Brockley such a special place to live. A widespread group of people have fun and make friends in putting it together, and an even wider group - nearly everyone who lives locally - enjoy the relaxed and happy atmosphere of the day. At the Fayre you are certain to see old friends, eat something delicious, join in the entertainments and pick up a bargain on the stalls.



**OWLS – LIANT!!**  
 ges meet sporting in our beautiful Hilly from mid April. tuition for beginners.



phone Jill or Bill: 20 8691 8926

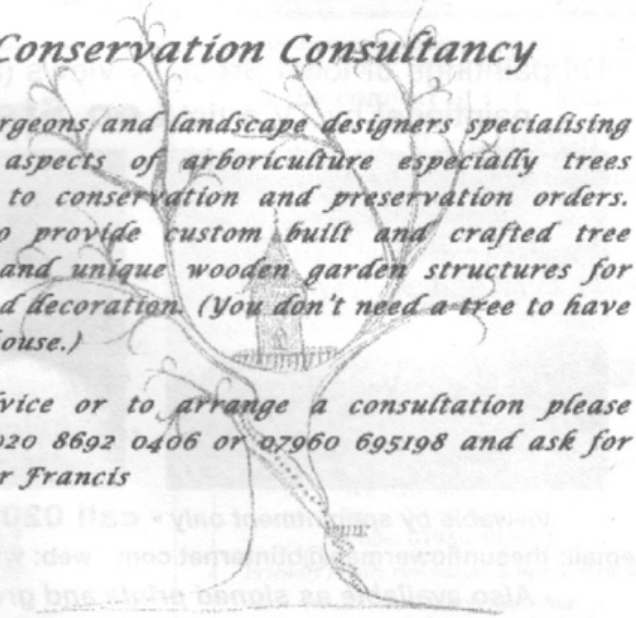


Pupils from reception class and Year 3 at Gordonbrock Primary School helped with the planting at the Eastern Road entrance, a project organised by Hilly Fields Park User Group (see previous page).

## Conservation Consultancy

*Tree surgeons and landscape designers specialising in all aspects of arboriculture especially trees subject to conservation and preservation orders. We also provide custom built and crafted tree houses and unique wooden garden structures for play and decoration. (You don't need a tree to have a tree house.)*

*For advice or to arrange a consultation please phone 020 8692 0406 or 07960 695198 and ask for Linda or Francis*





**Brockley Max festival's Art in the Park** was a wonderful day for both children and adults in the Stone Circle area, with fireworks at the end. The closing **n i g h t** performance arena was on the lower field.



The 20-page full-colour booklet

### *Millennium Stone Circle on Hilly Fields*

is available at Spalding & Sparrow Newsagents, 61 Loampit Hill (bottom of Tyrwhitt Road)

**Order by post. Cheques to: Brockley Society, 102 Tyrwhitt Road, London SE4 1QB.**

£2.50 inc. postage.

### Prendergast School Prizegiving

I was invited to represent BrocSoc at the school prize-giving in October, held in the Broadway Theatre, Catford, a venue large enough to hold the whole school.

Headmistress Miss Erica Pienaar reported on a remarkable year, and guest speaker Ms. Frankie Sulke, Executive Director for Children and Young People for Lewisham Council, was introduced by Mr. James Blott from the Worshipful Company of Leathersellers, who inspired the girls to find their own personal road to success.

I was very impressed by the number of prizes awarded for diverse activities, and was pleased at the number and variety of colleges, universities and courses which are the destinations of the girls this autumn: everything from criminology and forensic


chemistry to radiography and Russian Culture – anywhere from Canterbury to Durham!

I was also impressed by how the girls conducted themselves throughout, and the charming manner in which they treated me as a guest. Congratulations to all! And thank you Prendergast for a lovely afternoon.

*Gillian*

**BROCKLEY SOCIETY**

**BARBECUE**



The Society owns a very large and splendid barbecue.

You can hire it for the modest fee of £15-20 for the weekend.

Contact Bob on 8692 2289



**Delicious vegetables at the Farmers' Market, which takes place on the second Saturday of each month, 10am-3pm**

## TheGardeningDoctor.co.uk

'Nitrogen for shoots, phosphorus for roots, potassium for flowers and fruits'

**Dr Jim Kelly**

Bsc Msc PhD MInstP CPhys (Director)

**130 Breakspears Road**

**Brockley**

**London**

**SE4 1UA**

**T: 020 8305 6571**

**M: 07745 448 137**

Hard landscaping  
Horticultural advice  
Shrub & tree planting  
Flower border husbandry  
Water feature construction  
Seasonal lawn & hedge care  
Patio and container planting  
Garden maintenance and weeding  
Summerhouses, greenhouses and sheds

**your first choice in garden care**

Oil paintings of local Brockley views (and many other paintings) by TV artist **Leo Stevenson**



**Viewable by appointment only - call 020 8694 0128**

email: [thesunflowerman@btinternet.com](mailto:thesunflowerman@btinternet.com) web: [www.leostevenson.com](http://www.leostevenson.com)

**- Also available as signed prints and greetings cards!**

### The Sunflower Centre

Complementary Health and Lifestyle

Offering Osteopathy, Homeopathy, Acupuncture, Massage Therapy, Flower Essences, Reiki and Sound Healing, Counselling, Medical Herbalism, Pilates, Yoga and Alexander Technique classes and workshops

All therapists can help with a variety of acute and long-term problems. We aim to provide family health care from birth into old age.

- all types of aches and pains
  - general wellbeing ● stress and anxiety
  - skin, hormonal and digestive problems
  - ante- and postnatal care; newborn check-ups
- Full disabled access and facilities

For more details or advice please contact us at  
**81 Tressillian Road, Hilly Fields  
Brockley SE4 1XZ 020 8694 2714**  
[www.thesunflowercentre.co.uk](http://www.thesunflowercentre.co.uk)

**Open Day end of November with Taster Sessions**  
Gift vouchers available for Christmas presents  
See our enclosed newsletter for further details

# EMMA SHAW INTERIORS

Interior decorating and design

Excellent quality work and finish

Reliable and respectful  
of your home

Design and colour advice available

For a free estimate call:

0777 1866 785

## Go with the Flow

- Bioflow -

Patented magnetic technology for health  
- proven to help arthritis and available  
as attractive jewellery



- Ecoflow -

Magnets to save on domestic fuel prices  
and vehicle exhaust emissions



Many other environmentally friendly  
household products plus ethical and safe  
personal care products too.

For further information contact

Allison Davies

Tel: 07092 005658

Email: natures\_imp@yahoo.co.uk

## Alexander Technique

Individual lessons, introductory workshops

Michelle Cole (MISTAT)

020 8690 0801

079 4003 3728

m.cole@gooduse.com www.gooduse.com

## PLANNING APPLICATIONS

Construction of a wooden building in rear garden of  
86a Upper Brockley Rd. **GRANTED.**

Construction of an extension to rear roof slope, together  
with two rooflights in front roof slope of 12 Brockley  
Gardens in connection with conversion of loft space.  
**REFUSED.**

Lawful Development Certificate in respect of the  
construction of a single storey extension to r/o 8 Upper  
Brockley Rd. **GRANTED.**

Conservation Area Consent for demolition of a single  
storey garage and garden wall. Construction of a three  
storey block with roof space adjacent, to provide 1 one  
bedroom and 1 two bedroom maisonettes, together with  
associated landscaping at 58 Cranfield Rd. **GRANTED.**

Construction of a single storey extension to r/o 30 St  
Margarets Rd. **GRANTED.**

Construction of an external glazed canopy at r/o The  
Brockley Barge, 184 Brockley Rd. **GRANTED.**

Lawful Development Certificate in respect of demolition  
of conservatory and extension and construction of a  
single storey extension to the r/o 33 St Margarets Rd.  
**GRANTED.**

Re-covering of the in Rivendale slates; installation of a  
conservation type roof light in side roof slope, new  
windows to rear and sides, replacement front door,  
alterations to 2 storey rear addition to form a flat roof,  
widening vehicular access and provision of a car parking  
space to front of 38 Cranfield Rd. **REFUSED.**

Installation of rooflights in rear roof slope at 24 Manor  
Ave, in connection with conversion of loft space.  
**GRANTED.**

Certificate of Lawfulness in respect of use of the  
basement and ground floors at 93 Upper Brockley Rd as  
2 two bedroom self contained flats. **GRANTED.**

Formation of a lightwell at basement level to front of 93  
Upper Brockley Rd, together with alterations to front  
elevation. **GRANTED.**

Certificate of Lawfulness in respect of 40C & 40D  
Manor Ave as two flats. **GRANTED.**

Lawful Development Certificate in respect of  
construction of a single storey extension to r/o 106  
Tressillian Rd. **GRANTED.**

Construction of a single storey, three bedroom house in  
the rear garden of 186 Lewisham Way. **REFUSED.**

Certificate of Lawful Development in respect of  
construction of a hip to gable extension to side roof  
slope and extension to rear roof slope of 68 Vicars Hill,  
with rooflights in front. **GRANTED.**

Details of landscaping submitted in compliance with  
Condition (1) of the planning permission dated 2/3/07  
for alteration and refurbishment of 13-17 Breakspears  
Rd, together with installation of new windows and doors  
in front and rear elevations, construction of 1.8  
metre high gates and railings to front and associated  
landscaping. **GRANTED.**

Installation of double glazed, timber, sliding sash and  
casement replacement windows at Flats A & B, 41  
Rokeby Rd. **GRANTED.**

Installation of timber panelled front entrance door at 1,  
24 and 32 Rokeby Rd, together with re-roofing with  
Rivendale fibre cement slates. **GRANTED.**

Installation of PVCu replacement windows and doors in  
front and rear elevations of Geoffrey Court, Wickham  
Rd. **GRANTED.**

Change of use, alteration and conversion of 33  
Wickham Rd, together with construction of a single  
storey extension, plus basement to rear, alterations to

rear and side elevations, including roof lights and  
dormer windows, formation of a terrace to rear at first  
floor level and light wells, to provide 2 one bedroom, 5  
two bedroom and 1 three bedroom, residential units,  
associated landscaping and provision of refuse/recycling  
and cycle stores. **REFUSED.**

The installation of replacement PVCu windows and  
GRP panel doors in the front and rear elevations of  
Colin Blanchard House and Poplar House, Wickham Rd.  
**GRANTED.**

Construction of a bridging extension between two  
outbuildings in rear garden of 32 Wickham Rd, in  
connection with use as an annexe to main house.  
**GRANTED.**

### Trees

Retrospective application for unauthorised work to trees  
at r/o 108 Upper Brockley Rd.

Works to Walnut, Apple, Holly and Oak trees, all to r/o  
82 Tressillian Rd.

Works to a Pear tree at r/o 114 Tressillian Rd.

Works to a Sugar Maple tree at Geoffrey Court, 52

Wickham Rd. Remove a Robinia tree from r/o 6 Drake Rd.

Remove one Sycamore tree and works to two Silver Birch

trees in rear and Yew tree to front of 81 Tyrwhitt Rd.

Works to two Sycamore trees at 3B Tressillian Rd.

Works to three Lime trees to front of 51 Tressillian Rd.

Remove a Birch tree to the r/o 186 Lewisham Way.

Works to Oak tree, Silver Birch and two Conifer trees in

the rear garden at 68 Manor Avenue.

Fell a Lime tree to r/o 112 Tressillian Rd.

Works to Pear and Copper Beech trees to r/o 12

Breakspears Rd.

Works to an Ash tree at r/o 99 Breakspears Rd.

Works to three Cypress trees at 22 Tyrwhitt Rd.

Remove two Acacia trees from r/o 97 Cranfield Rd.

### Pending

Details of landscape including paving and railings  
submitted in compliance with condition (2) of planning  
permission dated 17/8/07 for formation of a lightwell at  
basement level to front of 93 Upper Brockley Rd,  
together with alterations to front elevation.

Fell Yew, Cherry and Lime trees and works to a second  
Lime tree, all at Memorial Gardens, Lewisham Way.

Remove a Willow tree from r/o 26A St Margarets Rd.

Construction of a single storey extension to r/o 148A

Upper Brockley Rd.

Construction of a single storey timber building to r/o 63  
Tyrwhitt Rd.

Construction of a part one/part two storey extension at  
ground and lower ground floor levels to r/o 156 Upper  
Brockley Rd.

Revised plans for alteration and conversion of 8b Hilly  
Fields Cresc, together with construction of a 2 storey  
extension to side, single storey to rear, dormer extension

in rear roof slope and dormer window in front and rear  
roof slopes and installation of rooflights to side roof  
slopes to provide 2 two bedroom, 2 one bedroom and

one three bedroom flats with the provision for refuse  
and bicycle stores.

Construction of a single storey extension and  
conservatory to r/o Ground Floor Flat, 16 Hilly Fields  
Cresc.

Installation of PVCu windows and doors of Walter  
Taylor Court and Alder House, Breakspears Rd.

Demolition of building at 47 Breakspears Rd and  
construction of a part three/part four storey, plus roof  
space building, comprising 1, one bedroom, 2, two  
bedroom flats and 1, three bedroom maisonette, erection

of a lightwell at rear, provision of 1 car parking,  
associated landscaping and communal terrace, refuse  
storage area.

Learn to play the guitar or bass  
in the comfort of your home

Folk - Pop - Classical

Complete beginners to Intermediates

£20 per hour

Adults and children from aged 7

Jacqueline 020 8694 1409

Superb Guest House in Heart of Brockley

St James's Guest House,

48 Breakspears

Road, Brockley, London SE4 1UL

Tel: 020 8691 1206

Fax: 020 8691 0150

Mobile: 07956 403692

Friendly family run business, newly opened

PRICES ARE VERY REASONABLE



## Local Tradesman

Fully Insured

Carpentry and Joinery  
Building and Maintenance

\* Fitting kitchens and bathrooms \*  
Painting and decorating \* Laying  
wooden, laminate and tile floors \* Mosaic  
floors \* Repairing and replacing sash  
windows \* Fitting doors and windows \*  
Plastering \* Replacing ceilings \* Tiling \*  
Garden decking

Mr S Goodison  
07963 897 802  
020 8692 0260

## Mosaic classes

07940 714241

janine@mosaics.free-online.co.uk

## Life Drawing classes

07961 081344

Lewisham Arthouse

140 Lewisham Way (corner of Rokeby Rd)

## DYSLEXIA

TUITION AND ADVICE FOR CHILDREN AND ADULTS

20 years experience

## Simon Aston

B.A. M.Phil. P.G.C.E. Dip.Spec.Ed. M.B.P.S. A.M.D.A. Dip.Law.

Tel. 020 8691 7076

Email. simonaston@london.com

## Simon Woolf Piano Teacher

By ear or from music

A fresh approach drawing on top flight performance experience in both jazz and classical fields. I am also an experienced classroom teacher and a registered tutor with Greenwich Music Services

100% success in Grade exams

Beginners Welcome

020 8691 7516

email: woolf.notes@virgin.net

## Fresh Start Cleaning

Moving House? So Little Time? So Much To Do?

WE SPECIALISE IN '1-OFF' HOUSE CLEANS -  
WHETHER YOU ARE BUYING OR LETTING -  
MOVING IN OR OUT - ALSO BEFORE AND AFTER -  
FUNCTION CLEANS (PARTIES, WEDDINGS, ETC.) -  
DOMESTIC & COMMERCIAL

FULLY INSURED - WEEKEND AVAILABLE - COMPETITIVE RATES  
FREE NO OBLIGATION QUOTES

Tel: 020 8318 1818 - Mobile: 07956 589394

## Counselling & Psychotherapy for Individuals and Couples

All issues

Fiona Hancock UKCP MBACP

020 8699 7288

Brockley, Honor Oak, New Cross

## Analyse, Build and Harmonise through the Voice



Your true voice can be accessed through breathing and vocalising exercises performed in specific postures. This allows you to tap your full energetic potential and reconstruct your very own instrument, your body, so that it serves you best.

Brigitte Deneck is fully qualified in the Wilfart Method.

She offers individual sessions and group workshops in Brockley.

Call 07931 78 48 68

## TAROT CONSULTATIONS

Individual, also Tarot evenings,  
Including 'wine & cheese'.

Enquiries

0208 314 0483

Genuine callers only, please

## Aromatherapy Deep Tissue Massage Reflexology

Sue Thomas ITEC MGPP AC Reg

New Cross Natural Therapy Centre

Tel: 020 8469 0858

& Honor Oak Tel: 020 8699 0287

Back, Neck & Shoulder Pain.

Anxiety, Tension & Stress. Relaxing & Revitalising

15 years experience

## grassroots pilates

# Pilates

## Brockley & Greenwich

Group classes or private tuition

Learn to move easily & correctly,  
dynamically & energetically;  
Suitable for all ages and fitness levels,  
from the fit athlete to the couch potato.  
Mixed ability/pre-post nata/over 60's/men only

## Kathy King

Body Control Pilates Association  
Register of Exercise Professionals

www.grassrootspilates.co.uk  
kathy.king@btopenworld.co.uk  
07890 054 772

## Reiki Healing - Sound Healing

Healing sessions with experienced healer,  
over 5 years experience.  
Good for relaxation, stress related illnesses,  
along with general health issues.

Also Reiki 1 and 2 teacher Based in the Brockley area

Contact Anthea 07984-649770

(REIKI MASTER AND SOUND HEALER)

or email

Anthea@metaphysicalhealing.com



ESTATE AGENTS & VALUERS

ESTATE AGENTS & VALUERS

369 Brockley Road

Crofton Park, SE4 2AG

40 yards from Crofton Park Station

Telephone 020 8691 1516

# Rosie Riley



## PLUMBER

## Handywoman

20 Years Experience

Tel: 020 8692 3375

Mobile: 07932 566 039

FREE ESTIMATES

## C.J. Property Maintenance & Repairs

Builder, Carpenter,  
Painting & Decorating,  
Restoration work  
- Home Improvements  
Comprehensive Fitted  
Kitchen Services.  
Landscape Gardening,  
Walls, Fencing, Patios,  
Paths & Ponds etc.

Exterior painting and repointing,  
Insurance work undertaken  
Please ring Colin Brooks for  
free advice & estimates on

Tel: 020 8699 9030

Mobile: 07799 794 685

Brockley Counselling  
Associates

EMMA JONES  
Dip Couns. MBACP

020 8690 1656  
07905 321 605  
emmajonescouns@talktalk.net

Room 7  
9A Brockley Cross  
London SE4

Professional  
confidential  
counselling

## Graphic Designer

Business + Advertising + Personal

For all your Graphic & Digital  
Print requirements using  
professional Macintosh software

ian.hibbert@btconnect.com

call Ian on: 020 8690 5624

## ADVERTISEMENTS

Small	3.6cm x 6cm	£15
Medium	7.5cm x 6cm	£25
Large	12.4cm x 7.6cm	£40

All ads must be prepaid

CIRCULATION 4000

READERSHIP 8000

to advertise, phone 07761 391739  
or email prbyrne@clara.co.uk