

# BROCKLEY SOCIETY



Issue 110 June 2007

Charity No: 1004245

Delivered free to 4000 households  
three times a year

## Brockley Meetings

All at St Andrews Centre, Brockley Rd,  
(corner of Wickham Rd) SE4 2SA

**Tuesday 3 July, 8pm**

Joint Meeting with

Hilly Fields Park Users' Group  
Brockley for children and families

- see page 2

The jewel of Brockley, which we share with other adjacent areas, is Hilly Fields. How can we enhance the area for today's and future generations of children? Bring your ideas!

**Tuesday 13 November, 8pm**

What makes Brockley special?

A talk on Brockley's buildings and why they should be conserved followed by Brockley Society AGM

**Friday 13 July, 7.30pm**

Brockley Barbecue

Hilly Fields, near Stone Circle  
with the famous BrocSoc BBQ

Copy deadlines for newsletter:

1 February, 1 May, 1 October  
to [clare@sumner-type.co.uk](mailto:clare@sumner-type.co.uk)

Farmers' Markets on Hilly Fields  
Second Saturday of each month  
10am-3pm

## brockleymax

Brockley Max Festival  
[www.brockleymax.co.uk](http://www.brockleymax.co.uk)  
- see page 5

You can now see all the information about the Fayre and how to book stalls etc on the Brockley Society website. Go to [www.brockley.com/brocsocl](http://www.brockley.com/brocsocl) and click on 'events'

## BROCKLEY SOCIETY

Chair .....8692 5027  
[prbyrne@clara.co.uk](mailto:prbyrne@clara.co.uk)  
Fayre (general) .....8691 5023  
Newsletter .....8692 3829  
[clare@sumner-type.co.uk](mailto:clare@sumner-type.co.uk)  
Newsletter distribution .....8692 5027  
Police liaison .....8692 6977  
Transport .....8691 1463  
Local history .....8692 6977  
Planning & highways .....8692 6977

Everyone living in the Brockley Conservation area is automatically a member of the Brockley Society. The Brockley Society welcomes all.

## BROCKLEY SOCIETY

**2007 HILLY FIELDS SUMMER FAYRE**  
SATURDAY 23rd JUNE  
12 - 5pm  
Hilly Fields, Brockley

**ARENA EVENTS**  
Birds of Prey, Salsa  
Fun Dog Show, Tug o'war  
Karate Display, Steel Band  
Community Singers

**ATTRACTIONS**  
Children's Zoo, Land Train  
Bouncy Slide & Dome  
Surf Simulator

**ALSO...**  
Craft Stalls, Barbecue  
Coconut Shy, Thai Food  
Caribbean Food

**COMPETITIONS**  
bring your entries on the day

**Photography**  
- U12's & over 12's  
- Theme 'Quintessential Brockley'

**Cake Decorating**  
- U12's & over 12's  
- Theme 'Home Sweet Home'

**Vegetable Modelling**  
- U12's

**Recycled Art**  
- Create an A4 picture of your favourite animal from the contents of your bin!

**Information**  
[www.brockley.com/brocsocl](http://www.brockley.com/brocsocl)

**Stall Applications**  
07758 464 195

## Brockley Open Studios

This year Brockley Open Studios will include the amazing and acclaimed Brockley Murals painted in 1933-36 by Evelyn Dunbar in the main hall at Prendergast School scenes of Hilly Fields in 1936 as well as others.

### Brockley Open Studios 2007

SATURDAY 30TH JUNE 2 PM - 8 PM  
SUNDAY 1ST JULY 2 PM - 8 PM  
MONDAY 2ND JULY 5 PM - 8 PM

Information Website: [www.brockleyopenstudios.co.uk](http://www.brockleyopenstudios.co.uk)  
or phone: 020 8692 6981

please note: Prendergast Murals open on  
Saturday June 30th & Sunday July 1st between 2pm & 6pm only.  
More about the murals on page 3

## Brockley Society & Hilly Fields Park Users' Group Joint Meeting

# Hilly Fields – our jewel

Tuesday 3 July 8pm

St Andrews Centre, Brockley Rd  
(corner of Wickham Rd) SE4 2SA

Hilly Fields is the jewel of Brockley and adjacent areas. How can we enhance it for today's and future generations of children? **BRING YOUR IDEAS!**

### *People value Hilly Fields for different things:*

Nature reserve. Stone Circle. Best vantage point on New Year's Eve. Bowling Green. Cricket pitch (new). Football pitches. Walking dogs. Tennis courts. Toilets: welcome addition. Jogging. Farmers' market. Lovely big trees on rolling slopes. Children's play area. Exercise equipment. Meadow. Great for Midsummer Fayre and other events.

### *There are also complaints. Here are some:*

We need a café. Toilets unsatisfactory. Cut down some trees so you can see St Paul's. Is it worth having a meadow? What is a meadow? Repeat the open-air theatre of a few years ago. Children's playground not well enough maintained. Dog's mess. Nothing for teenagers. Tennis courts' maintenance and lighting. More variety at the farmers' market.

**Come to the meeting with your ideas!**

## Coconuts

The coconut shy is a great tradition which adds spice to the Fayre every year. We need volunteers to take over responsibility for it. The two areas could be split as follows:

### Storage

The coconut shy consists of some 8 ft poles and shorter sticks which hold the coconuts and the net. They need to be stored in a cellar or similar, preferably near to the park.

### Stall on the day

Coconuts need to be ordered in advance and collected. This will probably involve sourcing a new supplier as Deptford Market has been problematic in the last two years. The poles need to be collected and taken up to the park. Setting up is easy, and running the stall can be done on a rota basis, as with other stalls on the day.

## Plea for cakes

For the Hilly Fields Fayre on Saturday 23 June, could everyone please consider baking a cake/ buns/ biscuits or anything for the Brockley Society tea stall. Not only does this stall usually contribute a surprisingly large amount to the society, enabling it to carry on guarding our interests as a conservation area, but all visitors to the fayre really look forward to a cup of tea and a homemade cake, especially some of our older residents. So please bring any baked produce to the tea tent on the morning of the fayre. There are wonderful prizes for two age groups of young bakers and one for grown ups.



*The Brockley foxes have not been foraging in the last few weeks so we have no restaurant review this time. Instead, here are some notes about our local shops*

## Shopping in Brockley

Brockley boasts an interesting collection of old fashioned small local shops on Brockley Road, on the edge of the conservation area - not the endless fast-food outlets and disused premises one sees in some areas, nor the over-priced novelty shops selling nothing of use. Here we have individually run businesses, crammed with such a variety of merchandise that sometimes the proprietors don't know the extent of their own stock!

If these local shops lack sophisticated display, they make up for it in convenience (Brockley even has the rare luxury of a functioning **post office**) and by usually having what you are looking for – somewhere.

**Amin's Pharmacy** is a large, double-fronted, airy shop, just made for wandering around the islands of cosmetics and accessories while waiting for a prescription. The pharmacy is slightly raised from the ebb and flow of customers, giving an air of serious medical tranquillity to the dispensing process, while on the shop floor a galaxy of merchandise is available. From the most expensive international names in perfumes to reasonably priced make-up and skincare products, the cosmetics displays provide endless browsing for those wanting a touch of glamour or looking for a gift. The more serious area of the pharmacy displays a range of

## Brockley line tree planting

Sycamore is regrowing at a pace on the Brockley railway line and needs cutting back or treating.

In 2002/3 the embankments between Nunhead and Lewisham stations were cleared of overgrown sycamore and stump-treated to kill. There was strong local feeling at the lack of consultation.

We do not want the 'wrong type of leaf' on the line anymore, especially as time and a lot of money was spent planting the mixed native tree saplings. Most took but are in danger of overshadowing by vigorous sycamore regrowth from previously treated stumps.

Now Network Rail say they have arranged to visit the site and undertake a full assessment of tree growth in the area and in particular the re-emergence of sycamores.

We hope the outcome will be that the sycamores are treated (after bird nesting is over) to eradicate them so they do not overshadow the less vigorous native whips and semistandards so carefully planted.

disability aids (very difficult to obtain at most local chemists) and shelves of natural and homeopathic remedies. Past the hot water bottles (jokey as well as sensible) and the huge range of baby toys, creams and talcs are hair accessories and nail products, sunglasses, suntan lotions and make-up bags, in fact everything you might need for a holiday or a last minute present.

Further along Brockley Road is another treasure trove, **Turner's Domestic**, a proper old fashioned hardware shop with a huge stock. An inquiry about something will often lead to exploring hundreds of items, guided by the proprietor and usually culminating in finding several varieties of whatever it is. All equipment and substances needed for DIY jostle with dozens of kitchen appliances and baking tins, small crockery, useful things that make good presents, all sorts of solid traditional cleaning brushes and brooms, doormats and ladders, and a huge selection of plastic bowls and boxes.

Across the road past the junction with Adelaide Road is the **Brockley Super Food Store**, previously the Irish Food Store. It was the jewel in the crown of Brockley food shops and still holds a great selection of unusual foods and ingredients. Just a quick look revealed six types of pepper sauce, Caribbean flower honey, Irish coarse-cut marmalade, almond flavoured rose water, very cheap dried chestnuts, salted cashews and a very extensive selection of unusual vegetables and fruits.

Just three of the many rather unusual handy shops on this stretch of Brockley Road that go to make up the Brockley shopping experience.



# BXAG Brockley Cross Action Group

## Brockley Common:

The group continues to fund raise and work on the final design with Lewisham Council. For three years the Brockley Cross Action Group (BXAG) through its Brockley Commoners group and a Partnership Group chaired by the local MP, has been reclaiming and transforming old common land around Brockley station. Phase 2 is now in active design with a planning application to be submitted in May/June.

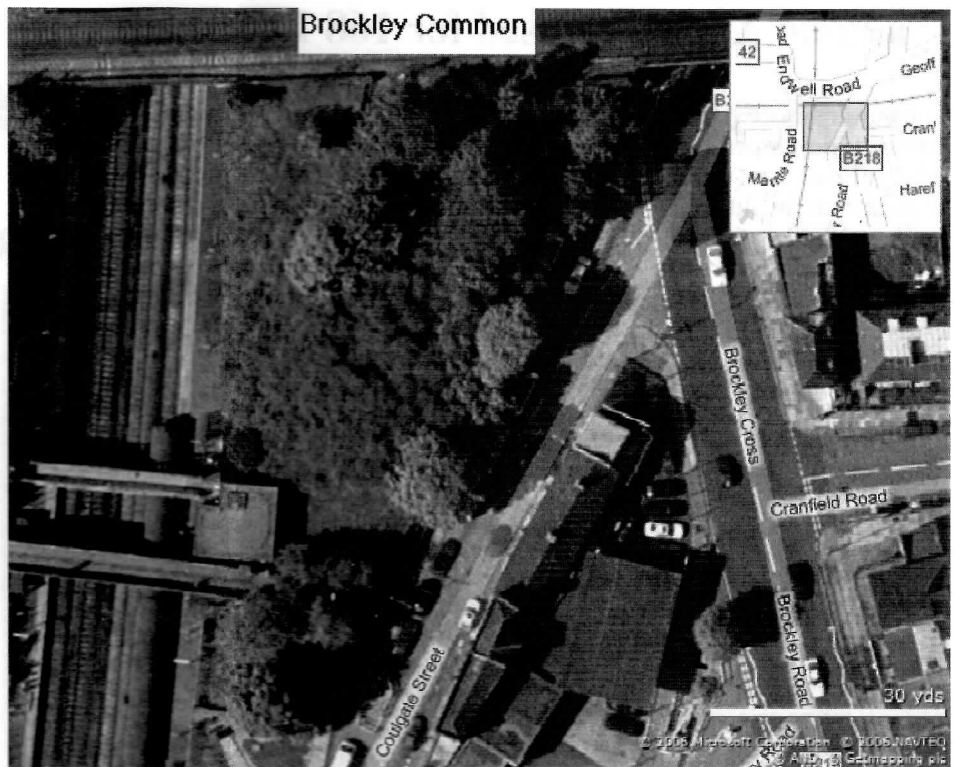
## New flower-bed sites

The BXAG has been given money from the Telegraph Hill and Brockley Locality Funds to design and plant up two new flower beds: at the bottom of St Asaph's Road, corner of Mantle Road, and on the Wickham Road estate near Brockley Road corner.

Rupert King is currently drawing up plans for these. Rupert designed the planting for the bed at the station so we've high hopes for these new beds. If you would like to help in any way, including design, planting, maintenance, further fund raising please contact [jill@martinconnell.co.uk](mailto:jill@martinconnell.co.uk)

**Brockley Clean Up:** As we go to press, a date in mid-May has been arranged between Lewisham Council and BCAG to clean up the Mantle Road approach to the Station, including recycling all the bottles and cans that have been thrown over the railings.

**Local Cloth Bags** will soon be available with 'shop locally in Brockley' printed on courtesy of Sarah Pfeiffer's department



(Brockley Town Centre). These will be available in local stores.

We try to keep most things updated on our website: [www.brockley/bcag.com](http://www.brockley/bcag.com) so make it a regular visiting place!

**Note:** Some have asked where Brockley Common is. Don't imagine the huge spaces of

*Clapham Common! All we have left in Brockley is a tiny piece of a once much larger common area, next to Brockley Station. The tireless campaign by volunteers in partnership with the authorities is turning the previous depressing eyesore of a station into a pleasant transport interchange that welcomes visitors, uplifts residents and promotes Brockley. - Ed.*

## The Brockley Murals

Visitors to the 2007 Brockley Open Studios will be able to take advantage of a unique opportunity to visit Prendergast School in Hilly Fields to see the acclaimed Brockley Murals, carried out by Evelyn Dunbar and others between 1933 and 1936. These famous murals are not normally accessible to the public, but will be on view during the Brockley Open Studios weekend on Saturday June 30th and Sunday July 1st 2007 between 2PM and 6PM

Jill Brownbill of Prendergast School explains: Prendergast School is the proud steward of the Brockley Murals, painted in 1932-1935 by Evelyn Dunbar (1906-1960) and Charles Mahoney (1903-1968) with additional panels by Violet Martin (dates?) and Mildred Eldridge (1909-1991).

The Brockley Murals established Dunbar's reputation and she went on to become an Official War Artist in WW2 and documented the life of Land

Girls throughout the UK. She was recently the subject of a major retrospective and her work is in a number of museum collections including the Tate Gallery.

The Murals are considered to be among the best examples of British mural painting of the 1930s. They tell the story of Aesop's Fables and use the flora and fauna and landscape of Kent and Southeast London, including Hilly Fields, to illustrate the tales. The figures in the piece are autobiographical and hint at the artists' memories and relationships.

The Brockley Murals are a national treasure and deserve much wider recognition than they currently enjoy. Because Prendergast is a thriving local school visitors are not normally permitted without a special appointment, so why not come along and see Brockley's "secret" artistic delights while enjoying Brockley Open Studios 2007?



**Sat 30 June & Sun 1 July, 2-6pm**



## Make your summer swing with the Albany!

The Albany is a purpose built performing and digital arts centre in the heart of Deptford. It has a strong focus on working with local communities, providing a venue for a range of culturally diverse performing arts, digital arts facilities and a range of educational training and community projects. Residents of the Albany include three of the UK's most significant disability arts organisations (Heart n' Soul, Entelechy and Drake Music) as well as a number of smaller arts and welfare advice organisations. The Albany is a fully accessible building and all Albany performance events are inclusive. We aim to welcome all members of the community. Box Office 020 8692 4446 [www.thealbany.org.uk](http://www.thealbany.org.uk) The Albany, Douglas Way, Deptford, London SE8

# Planning Appeal refused for 168 Lewisham Way

The government's Planning Inspector has refused the planning appeal by a property developer for 168 Lewisham Way. Brockley Society is pleased that this refusal strengthens the council's position when faced by similar applications in future. As a conservation society, we have a responsibility to work with Lewisham planning department to ensure that the special architectural features in the area are preserved. There can be conflict with property developers who would like to profit from building on Brockley's large gardens or from demolishing structures in bad repair and replacing them with lucrative new buildings. The following article describes what happens when a developer appeals against a planning refusal.

Brockley Society was represented at the local hearing in the Civic Suite at Lewisham Town Hall on 11 April following an appeal by Homerite Properties (Gibraltar) against the council's refusal of Listed Building Consent for the demolition of the existing stable building at the rear of 168 Lewisham Way and planning permission to build instead a single-story one-bedroom house with a parking space.

Present to oppose the proposed demolition and redevelopment were Jan Mondrzejewski, Senior Planning Officer, Justine Page, Buildings Conservation Officer, the owner-occupiers of 166 Lewisham Way, and Brockley Society representatives. In support of the appeal were a team of three with legal, architectural and planning expertise, representing the owner of the property, Mr Cunningham, who lives abroad.

Fifty years ago 168 Lewisham Way was a doctor's house with a surgery in the basement and a family home upstairs. The stable/coach-house stood at the end of the garden adjoining the mews, in an area paved with granite setts and surrounded by three magnificent trees – two Italian black poplars and a lovely pear tree believed to have survived from the pear orchards that predated the 1850s housing development. The stable is shown on maps dating back to before 1896.

In 1973 Nos. 160 to 186 Lewisham Way, including the stable, were placed on the statutory list of buildings of special architectural or historic interest. The trees in the rear gardens were already subject to tree preservation orders, made when a General Improvement Area was designated around Manor Avenue in the 1960s.

The main house itself is now sub-divided into six units and the trees have been felled – despite surviving the gales of 1987. Their demise preceded earlier planning applications which were refused by Lewisham Council, one of which went to appeal in 1991 but was refused by the Planning Inspector, who commented on the feeling of spaciousness characteristic of the area with the length of the gardens complementing the height of the houses, enhanced by mature trees. He also commented on the potential loss

of parking space should development take place.

The stable building is now underused and falling into disrepair. Access is obstructed by large piles of wood and builder's rubbish removed from other properties undergoing redevelopment. The building is currently not available for garaging.

The meeting was chaired by the Planning Inspector who considered whether this constituted substantial demolition of a listed building and whether there was sufficient justification, and what effect the new building would have on the setting of the main building and the character of the Conservation Area, the impact on residential amenities and parking, and the effect on the large ash tree in the garden of 166 Lewisham Way.

Mr Cunningham's representatives argued that the coach-house/stable constituted only a small part of the listing of the whole site. Previous alterations made it an ugly building, now in poor repair; and the proposed new building would incorporate a look-alike stable building, albeit in a different position to the east.

## Objections

Lewisham Council's officers disputed

## Our gardens are vanishing!

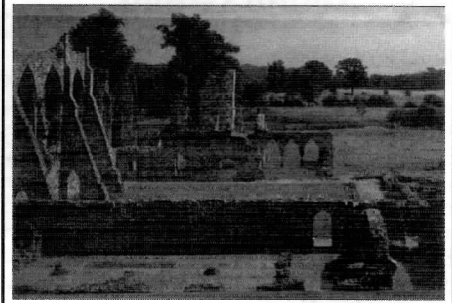
In a city of 7.5 million people and with space at a premium, the character of London's gardens vary hugely – from window boxes and communal spaces to large private gardens. Making up one fifth of the area of Greater London, gardens are vital homes for our wildlife, soaking up the rain, cleaning our air, providing places for relaxation and leisure.

But gardens are under threat. Garden loss from development, our own gardening habits and climate change pose a real risk to these vital resources. Many front gardens are being paved over to make extra parking spaces. An area of front gardens equivalent to 22 Hyde Parks has already disappeared in the past ten years.

The London Wildlife Trust is running a campaign to raise awareness of the plight faced by London's gardens and to show how important gardens are to wildlife and people in coping with climate change.

Visit [www.wildlondon.org.uk](http://www.wildlondon.org.uk).

## Bayham Abbey



Standing on the Kent and Sussex border, Bayham Abbey is a romantic ruin in the wooded valley of the River Teise. It was built by the French 'white canons', known as Premonstratensians or Norbertines, a religious order of the 13th century, who moved there from the Manor of Brockley in 1200. The monastery owned the lands in Brockley until the Reformation in 1526. The abbey is a perfect site for a picnic and a visit to the Georgian Dower House. [www.english-heritage.org.uk](http://www.english-heritage.org.uk), 01892 890381.

that it was a small and insignificant building. Over 100 years old, it was one of the very few remaining authentic Victorian stables in the Conservation Area. To replace a listed building with a similar one nearby was not permissible as the original had its own integrity and its flank wall formed a pleasant boundary to the mews. A replica would lose its listed status.

It seemed an ideal place for off-street parking, cycle storage or dustbins, which at present create a squalid appearance on the Manor Avenue footpath. The six units in the main house had increased parking on the already congested streets outside. Mr Cunningham's representatives were unsure if access had been offered to existing tenants.

Sub-dividing the rear garden would destroy an integral aspect of the original Victorian development. The roots of the large ash tree in the adjoining property could be damaged by building work beneath its canopy, making it unstable in the prevailing south-west winds since the felling of the other large trees.

After a two-hour discussion at the Town Hall, the meeting reconvened on site, where Mr Cunningham was waiting. The listed stable building was inspected, and measurements were taken – with some difficulty because of the builder's debris. A brisk and comprehensive tour of the area and its mews looked at the few remaining stables and pockets of new developments.

If the Planning Inspector had allowed the appeal, various conditions would have been imposed. There is government pressure to build on 'brownfield' sites, but this decision strengthens the council planning department's attempts to ensure conservation.

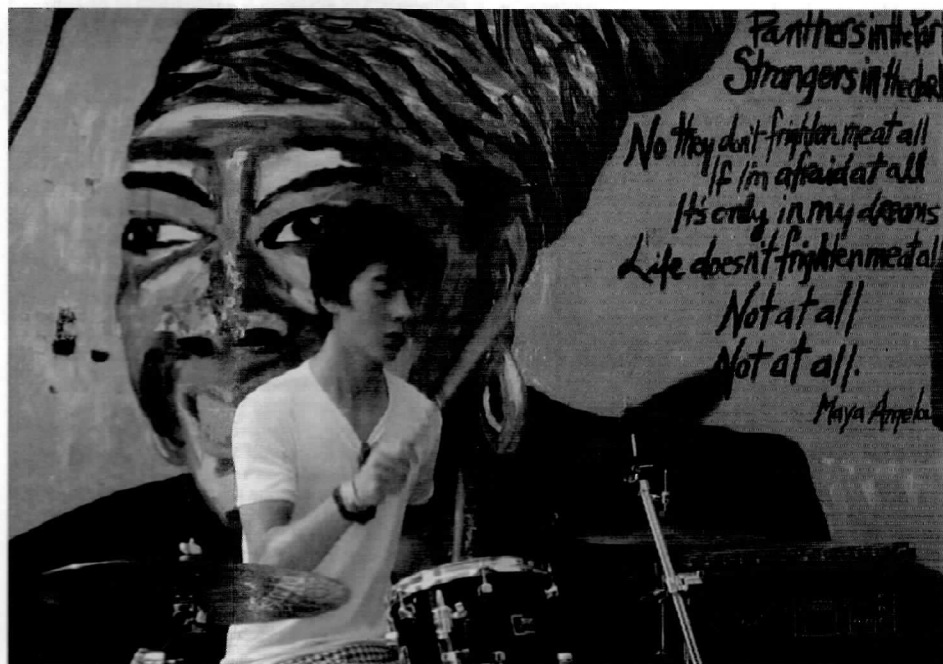
J.B.



# brockleymax Brockley Max festival

Pictures from the opening night, 1 June 2007 at Brockley Station Murals

Back again in front of the Bob Marley mural to launch the Festival. Local bands RoadKill, a selection of musicians from Felix's School of Rock (including a Rock Choir!), Charlie Brown, Don't We Look Smart, and a local 7-piece soul/funk outfit Groove Digger.



## Art Exhibitions

**Annual Lewisham Arthouse Group Show. 6-17 June, Sun-Wed 12-6pm.** Marking the abolition of the slave trade: exhibition entitled "SUGAR IN MY TEA".

**From the Exotic to the Everyday May 24-June 15, 11-2pm.** Recent botanical drawings and paintings by local artist Alison Day. The Café Orange, Kitto Road.

**Augusto Monk Presents... 1 June - 12 July** Moonbow Jakes. A mixed media production of paintings in oils, acrylics, enamels and burnishes on canvas and paper.

**Brockley Group Show 28 May-17 June.** The Toad's Mouth Too Cafe & Gallery.

## PLANNING APPLICATIONS

### 164 Upper Brockley Road.

The installation of replacement timber sash windows to the front elevation and replacement sash PVCu windows and doors to the rear elevation of 164 Upper Brockley Road. **Granted**

### 9 Royston Court, 2 Ashby Road.

The construction of a single storey extension to the side/rear of 9 Royston Court, 2 Ashby Road, to provide additional living space. **Granted**

### 2 St. Margarets Road.

The installation of timber framed double glazed replacement windows to the front elevation of 2 St Margarets Road. **Granted**

### 13-17, Breakspears Road.

The alteration and conversion of part of the basements at 13 and 15 and the basement at 17 Breakspears Road, with the construction of additional lightwells to the front, to provide 1 one bedroom, 1 two bedroom and 1 three bedroom self-contained flats, together with associated landscaping, provision of boiler room enclosures and 1.8 metre high screens to the bin stores. **Granted**

The alteration and refurbishment of 13-17 Breakspears Road, together with the installation of new windows and terraces in the front and rear elevations, the construction of 1.8 metre high gates and railings to the front and associated landscaping. **Granted**

### 96 Tressillian Road.

The retention of the gates including the concrete lintel over the gates to the parking area at the rear of 96 Tressillian Road. **Granted**

### 186 Lewisham Way.

Listed Building Consent in respect of the installation of two roof lights to the single storey addition at the rear of Flat 2, 186 Lewisham Way, together with internal alterations, including the creation of a new door opening to the living room and the closure of an existing door opening between the kitchen and bedroom. **Granted**

### 2-4 Tyrwhitt Road.

Alterations to the front and side elevations and the construction of decking to part of the front garden of The Talbot PH, 2-4 Tyrwhitt Road, together with retractable awnings to the front and side elevations, installation of cast iron bollards and chains to the front boundary line and a new timber bin store to the front. **Granted**

### Prendergast School, Adelaide Avenue.

The erection of replacement fencing and gates with bow top railings to the height of 1.8m to the side and 1.5m to the front of Prendergast School, Adelaide Avenue. **Granted**

### 74 Upper Brockley Road.

The installation of replacement PVCu, double glazed, vertically sliding sash and casement windows to the rear elevation of 74 Upper Brockley Road. **Refused**

### 12 St. Margarets Road.

The construction of a single storey extension to the rear of 12 St Margarets Road. **Granted**

### PENDING

### 24 Manor Avenue.

Proposal: The installation of rooflights in the rear roof slope at 24 Manor Avenue, in connection with the conversion of the loft space to provide additional living accommodation.

### 93 Upper Brockley Road.

Proposal: Lawful Development Certificate in respect of use of the basement and ground floors at 93 Upper Brockley Road, as 2, two bedroom self contained flats.

### 196 Brockley Road.

Proposal: The construction of a single storey, plus basement level building on the site of 196 Brockley Road, to provide a commercial unit (342 sq.m) (Use Classes A1) (shops), A2 (Financial and Professional services), A3 (Restaurants and Cafes) and B1 (Business), together with the provision of deliveries/refuse store.

### 58 Cranfield Road, Brockley.

Proposal: The demolition of single storey garage and garden wall and the construction of a three storey block adjacent to 58 Cranfield Road, to provide 1 one bedroom self-contained flat and 1 two bedroom, self-

contained maisonette, together with associated landscaping and provision of bin and cycle stores. (Please note applications have also been received for the demolition works and new windows in the front elevation. Application refs:- 07/65444 & 65347).

Proposal: Conservation Area Consent for demolition of a single storey garage and garden wall at 58 Cranfield Road.

### 8b Hilly Fields Crescent.

Proposal: The alteration and conversion of 8b Hilly Fields Crescent, together with the construction of a 2 storey extension to the side, single storey to the rear, dormer extension in the rear roof slope and dormer window in the front and rear roof slopes and the installation of rooflights to the side roof slopes to provide 2 two bedroom, 2 one bedroom and one three bedroom self-contained flats with the provision for refuse and bicycle stores

### Land adjoining, 1 Drake Road.

Proposal: The construction of a three storey plus basement, four bedroom house on land adjacent to 1 Drake Road.

### 8 Upper Brockley Road.

Proposal: Certificate of Lawful Development in respect of the construction of a single storey extension to the rear of 8 Upper Brockley Road.

### 38 Cranfield Road.

Proposal: The provision of a car parking space to the front of 38 Cranfield Road SE4, together with alterations to side and rear elevations and re-covering of the roof.

### 47 Breakspears Road.

Proposal: The demolition of the existing building at 47 Breakspears Road SE4 and the construction of a part three/part four storey, plus roofspace building, incorporating balconies, comprising 2, one bedroom, 3, two bedroom and 1, three bedroom, self contained flats, together with the provision of 1 car parking and 7 bicycle spaces, associated landscaping and refuse storage area. Withdrawn by applicant.

### TREES

Crown reduce by 30% an Ash tree in the rear garden of 1A St Margarets Road.

Crown reduce by 40% a Sycamore tree at the rear of 41 Cranfield Road.

Fell a Sycamore tree and retrospective application to fell three Sycamore trees and one Elder at the rear of 46 Wickham Road.

Repollard a Lime tree to the front, reduce a Bay tree to compact shape and lift an Ailanthus on right hand side only, both trees to the rear of 75 Harefield Road. Crown lift and crown thin two Walnut trees at the rear of 25 Tyrwhitt Road.

Fell a Willow and two Purple Plum trees at 15 Montague Avenue.

Crown lift a Plane tree and a False Acacia to 5m, both trees at 3 Tressillian Crescent.

Fell seventeen self sown Sycamore trees at the rear of 18 Manor Avenue.

Remove a Pear tree and if necessary root prune two unidentified trees to the front of 111 Upper Brockley Road.

Retrospective application for the unauthorised removal of seven Sycamore and Elder trees at the rear of 32 Cranfield Road.

Crown reduce by 25%, crown thin by 15% and prune to reshape a Plum tree to the rear of 84 Wickham Road. Crown reduce by 25% a Willow tree at the rear of 28 Harefield Road.

Crown reduce by 25%, reshape and remove dead wood from a Sycamore tree to the front of 113 Upper Brockley Road.

Crown reduce by 30% a Sycamore tree at the rear of 206 Tressillian Road.

Crown reduce by 20% a Sycamore tree T1 in the front garden of 139 Upper Brockley Road.

## Oil paintings of local Brockley views by TV artist Leo Stevenson



Viewable by appointment only

- call 020 8694 0128

email: thesunflowerman@btinternet.com

web: www.leostevenson.com

- Also available as signed prints and greetings cards!



## The 20-page full-colour booklet Millennium Stone Circle on Hilly Fields

is available at  
Spalding & Sparrow  
Newsagents,  
61 Loampit Hill  
(bottom of Tyrwhitt Road)

Order by post. Cheques to:  
**Brockley Society,**  
**102 Tyrwhitt Road,**  
**London SE4 1QB.**

£2.50 inc. postage.

## DYSLEXIA

TUITION AND ADVICE FOR CHILDREN AND ADULTS  
20 years experience

## Simon Aston

B.A. M.Phil. PG.C.E. Dip.Spec.Ed. M.B.Ps.S. A.M.D.A. Dip.Law.

Tel. 020 8691 7076

Email. simonaston@london.com

## TAROT CONSULTATIONS

Individual, also Tarot evenings,  
Including 'wine & cheese'.

Enquiries

0208 314 0483

Genuine callers only, please

## Fresh Start Cleaning

Moving House? So Little Time? So Much To Do?

WE SPECIALISE IN '1-OFF' HOUSE CLEANS - WHETHER YOU ARE BUYING OR LETTING -  
MOVING IN OR OUT - ALSO BEFORE AND AFTER -  
FUNCTION CLEANS (PARTIES, WEDDINGS, ETC.) - DOMESTIC & COMMERCIAL  
FULLY INSURED - WEEKEND AVAILABLE - COMPETATIVE RATES

FREE NO OBLIGATION QUOTES

Tel: 020 8318 1818 - Mobile: 07956 589394

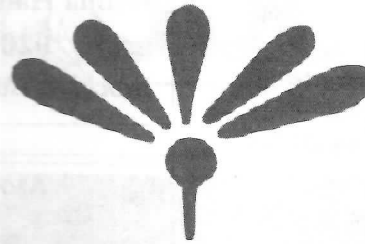
**Builder, Carpenter,  
Painting & Decorating,  
Restoration work  
- Home Improvements  
Comprehensive Fitted  
Kitchen Services.  
Landscape Gardening, Walls,  
Fencing, Patios,  
Paths and Ponds etc.  
Exterior painting and repointing,  
Insurance work undertaken**

*Please ring Colin Brooks for free  
advice & estimates on*

**020 8699 9030**

# New Cross Natural Therapy Centre

*Established 1985*



newxtherapy@btconnect.com

www.newcrossnaturaltherapy.com

**394 New Cross Road, SE14 6TY**

## Go with the Flow

**- Bioflow -**

*Patented magnetic technology for health  
- proven to help arthritis and available  
as attractive jewellery*



**- Ecoflow -**

*Magnets to save on domestic fuel prices  
and vehicle exhaust emissions*



*Many other environmentally friendly  
household products plus ethical and safe  
personal care products too.*

**For further information contact**

**Allison Davies**

**Tel: 07092 005658**

**Email: natures\_imp@yahoo.co.uk**

## BROCKLEY SOCIETY

### BARBECUE



*The Society owns a very large and  
splendid barbecue.*

*You can hire it for the modest fee of £15-20 for the weekend.*

**Contact Bob on 8692 2289**

## Graphic Designer

**Business + Advertising + Personal**

*For all your Graphic & Digital  
Print requirements using  
professional Macintosh software*

**ian.hibbert@btconnect.com**

**call Ian on: 020 8690 5624**

## Simon Woolf

**Piano Teacher**

**By ear or from music**

*A fresh approach drawing on top  
flight performance experience in  
both jazz and classical fields*

*I am also an experienced  
classroom teacher and a  
registered tutor with  
Greenwich Music Services*

**100% success in Grade exams**

**Beginners Welcome**

**020 8691 7516**

**email: woolf.notes@virgin.net**

## Alexander Technique

**Individual lessons, introductory workshops**

**Michelle Cole (MSTAT)**

**020 8690 0801**

**079 4003 3728**

**m.cole@gooduse.com www.gooduse.com**

## MGC Secretarial Services

*Word-processing - Letters, CVs,  
Forms, Projects, Theses, Accounts,  
Fax Service, Photocopying, Binding,  
Laminating, Passport Photos,  
Small Volume Printing.*

**Tel: 020 8469 0634 Fax: 020 8469 0639  
353a Brockley Rd, SE4 2AG**

## Brockley Counselling Associates

**EMMA JONES  
Dip Couns, MBACP**

**020 8690 1656**

**07905 321 605**

**emmajonescouns@talktalk.net**

**Room 7  
9A Brockley Cross  
London SE4**

**Professional  
confidential  
counselling**

**Learn to play the guitar or bass  
in the comfort of your home**

**Folk - Pop - Classical**

**Complete beginners to Intermediates**

**£20 per hour**

**Adults and children from aged 7**

**Jacqueline 020 8694 1409**

## Superb Guest House in Heart of Brockley

**St James's Guest House,  
48 Breakspears**

**Road, Brockley, London SE4 1UL**

**Tel: 020 8691 1206**

**Fax: 020 8691 0150**

**Mobile: 07956 403692**

**Friendly family run business, newly opened**

**PRICES ARE VERY REASONABLE**



## Local Tradesman

**Fully Insured**

**Carpentry and Joinery  
Building and Maintenance**

**\* Fitting kitchens and bathrooms \*  
Painting and decorating \* Laying  
wooden, laminate and tile floors \* Mosaic  
floors \* Repairing and replacing sash  
windows \* Fitting doors and windows \*  
Plastering \* Replacing ceilings \* Tiling \*  
Garden decking**

**Mr S Goodison  
07963 897 802  
020 8692 0260**



**PLAY BOWLS –  
IT'S BRILLIANT!!**



Where all ages meet  
and have a sporting  
good time on our beautiful Hilly  
Fields rink from mid April.  
Woods and tuition for beginners.

Telephone Jill or Bill:  
020 8691 8926



**SPORTING  
SURREALISM  
AT ITS FINEST!!**

**Counselling & Psychotherapy  
for Individuals and Couples**

All issues

Fiona Hancock UKCP MBACP

020 8699 7288

Brockley, Honor Oak, New Cross

**Aromatherapy  
Deep Tissue Massage  
Reflexology**

**Sue Thomas** ITEC MGPP AC Reg

New Cross Natural Therapy Centre  
Tel: 020 8469 0858  
& Honor Oak Tel: 020 8699 0287

Back, Neck & Shoulder Pain.  
Anxiety, Tension & Stress. Relaxing & Revitalising  
15 years experience

**Analyse, Build and Harmonise  
through the Voice**



Your true voice can be accessed  
through breathing and vocalising  
exercises performed in specific  
postures. This allows you to tap your  
full energetic potential and reconstruct  
your very own instrument, your body,  
so that it serves you best.

Brigitte Deneck is fully qualified in  
the Wilfart Method.

She offers individual sessions and  
group workshops in Brockley.

Call 07931 78 48 68

grassroots pilates  
**Pilates**

**Brockley & Greenwich**  
Group classes or private tuition

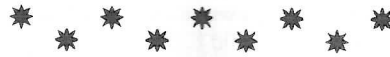
Learn to move easily & correctly,  
dynamically & energetically;  
Suitable for all ages and fitness levels,  
from the fit athlete to the couch potato.  
Mixed ability/pre-post nata/over 60's/men only

**Kathy King**

Body Control Pilates Association  
Register of Exercise Professionals

www.grassrootspilates.co.uk  
kathy.king@bopenworld.co.uk  
07890 054 772

**Rosie Riley**



**PLUMBER**

**Handywoman**

20 Years Experience

Tel: 020 8692 3375

Mobile: 07932 566 039

FREE ESTIMATES



**SAXTON & Co.**  
ESTATE AGENTS & VALUERS  
ESTATE AGENTS & VALUERS  
369 Brockley Road  
Crofton Park, SE4 2AG  
40 yards from Crofton Park Station  
Telephone 020 8691 1516

**Music Tuition  
Cello & Piano**

Friendly graduate of Royal  
Academy of Music with LRAM  
Teaching Certificate

emilymitchell@celloplayer.co.uk

07779 164608



**CATS @ HOME**

Formerly Pet and Plant Nannies, established 1986

We care for your cats in the comfort and security of their own home during your absence.  
We provide a reliable, trusted and confidential service recommended by Veterinary Surgeons  
and endorsed by our many satisfied clients. References are available and we are fully insured.

If your best friend does not enjoy your holiday contact

Carole Leonard - Steve Humphryes - Viv Hutter

Telephone 020 8692 0023

email carole@cats-at-home.com - website www.cats-at-home.com

We will be happy to discuss your cat's individual requirements

**The Gardening Doctor.co.uk**

'Nitrogen for shoots, phosphorus for roots, potassium for flowers and fruits'

**Dr Jim Kelly**

Bsc Msc PhD MInstP CPhys (Director)

130 Breakspears Road

Brockley

London

SE4 1UA

T: 020 8305 6571

M: 07745 448 137

Hard landscaping  
Horticultural advice  
Shrub & tree planting  
Flower border husbandry  
Water feature construction  
Seasonal lawn & hedge care  
Patios and container planting  
Garden maintenance and weeding  
Summerhouses, greenhouses and sheds

**your first choice in garden care**

**The Sunflower Centre  
Complementary Health and Lifestyle**

Offering Osteopathy, Homeopathy,  
Acupuncture, Massage Therapy,  
Flower Essences, Reiki and Sound Healing,  
Counselling, Medical Herbalism  
Pilates, Yoga and Alexander Technique  
classes and workshops

All therapists can help with a variety of acute  
and long-term problems. We aim to provide  
family health care from birth into old age.

- all types of aches and pains
  - general wellbeing ● stress and anxiety
  - skin, hormonal and digestive problems
  - ante- and postnatal care; newborn check-ups
- Full disabled access and facilities

For more details or advice please contact us at

81 Tressillian Road, Hilly Fields

Brockley SE4 1XZ 020 8694 2714

www.thesunflowercentre.co.uk

**ADVERTISEMENTS**

Small	3.6cm x 6cm	£15
Medium	7.5cm x 6cm	£25
Large	12.4cm x 7.6cm	£40

**All ads must be prepaid**

CIRCULATION 4000  
READERSHIP 8000

to advertise, phone 07761 391739  
or email prbyrne@clara.co.uk