

# BROCKLEY SOCIETY



Issue 106 March 2006

Charity No: 1004245

Delivered free to 4000 households

## Brockley Calendar

**Hilly Fields Development Group**  
*in association with Envirowork Lewisham*  
Guided History Walk round Hilly Fields led by esteemed local historian Gillian Heywood

**Hilly Fields Park Users' Group**  
Tuesday 14 March, 7.30pm  
at the Bothy

**Brockley Max 2006**  
2-10 June, various venues  
(see right)

**Brockley Society Midsummer Fayre**  
Saturday 24 June, 12noon - 5pm  
(see right)

**Farmers' Markets on Hilly Fields**  
Second Saturday of each month  
11 March, 8 April, 13 June 10am-3pm

**Telegraph Hill Craft Fair**  
25 March 11.30 - 4.30

St Catherine's Church, Pepys Rd, SE14.  
Part of the annual Telegraph Hill Festival.  
A large variety of locally made crafts for sale, plus refreshments and music. Entrance free. For details or to hire a stall contact Jan on 070 639 0795

The Toad's Mouth Too cafe, after three years of negotiations, was granted permission to open the garden until 9pm, Thursdays to Sundays. Michelle and Kevin would like to thank BrocSoc, Brockley Cross Action Group, and local ward councillors Darren Johnson and Terry Scott for supporting the application at planning committee meetings. To celebrate, there is a new evening menu. They look forward to seeing everyone soon for an alfresco meal.

## BROCKLEY SOCIETY

Chair .....8692 5027  
prbyrne@clara.co.uk  
Fayre general .....8691 5023  
Fayre (to book stalls) .....8691 0298  
Newsletter .....8692 3829  
clare@sumner-type.co.uk  
Newsletter distribution .....8692 5027  
Police Liaison .....8692 6977  
Transport .....8691 1463  
Local History .....8692 6977  
Hilly Fields  
Users Group .....07958 58 58 09  
Planning & Highways .....8692 6977

Everyone living in the Brockley Conservation area is automatically a member of the Brockley Society. The Brockley Society welcomes all - regardless of race, religion, gender, sexual orientation or physical disability.

## Views on the mews - collaboration works!

We are delighted that, after 20 years of campaigning to retain the open aspect of Brockley's mews, the council has now agreed!

Since the late 1970s, when pressure from developers first started, Brockley Society has maintained that residential development of the mews will alter the character of the area. The population density is already quite high because so many houses are divided into flats.

- The large houses need their long back gardens, whether in single or multi occupancy.
- Large trees are always planted away from the house, so the now mature trees are verging the mews.
- An important aspect of this Conservation Area is the open vista across the long back gardens, visible from the side roads and the glimpse of this space between the houses.
- Any substantial development would inevitably mean the loss of these trees, chopping off a third to a half of back gardens and also the loss of the open aspect between the backs of the houses

Now that the Council has stated that "there will be a presumption against residential development of the mews", the threat of

developers has faded and we, as residents can start to define a policy for these rural lanes.

The main roads are over parked and will only get more so in the future, so surely we should be finding a way of using the back entrances for car parking, at least for some of the houses.

The mews are unlit, unsafe at night and can only be made safe by constant use and by being lit. We already have gates to keep out unwanted vehicles; these can be improved. A scheme of railed off parking spaces or garages or just a secure garden wall, all with access to the main house, and with low level lighting in the mews maybe on a sensor, could be the way forward.

It would need the majority of owners to work together to achieve a comprehensive and cohesive scheme, but I believe it can be achieved, especially as there could be grants available to improve this aspect of the Conservation Area.

Anyone interested? Please contact Peter Byrne on 020 8692 5027, prbyrne@clara.co.uk and we will set the ball rolling.

Gillian

- See page 3: Good news for Brockley Conservation Area! and Article 4 Direction.

## Fayre - for your summer diary!

The Brockley Society Midsummer Fayre will be taking place again this year on Saturday 24 June 2006, 12-5pm. Please put the date in your diary as it promises to be a great day out for all the residents of Brockley and beyond. Attractions this year include: Children's Zoo, children's rides, barbecue, West Indian & Thai food, tea tent and cake stand, craft stalls, steel band, dancing, dog show, tug of war, coconut shy - and more to be announced.

The Brockley Society is a registered charity. It is a community association open to everyone living in the Brockley Conservation area. It has no paid staff and is run entirely by the volunteer members. If you live in the area and you want to be involved then you belong in BrocSoc. Income from the Midsummer Fayre goes towards the Brockley Society and is spent on local events and the newsletter, which is delivered free to every household in the area several times a year. The objectives of the Brockley Society are to conserve the local environment, promote local community activity and improve local facilities.

To book a stall at the Fayre  
please call 020 8691 0298

We always need volunteers to help with the organisation before and on the day. If you would like to help in any way please call 020 8691 5023.



## Brockley MAX

MUSIC  
ARTS &  
EXHIBITIONS

**Brockley Max 2006**  
This year's festival is taking place from 2-10 June and the organisers are hoping it will be as big a success as last year's. Events already planned include a craft fair, an opening night, the Hilly Field's Children's Day, a poetry evening, paper making and silk painting workshops, a children's music day and a film night as well as the art exhibitions, open studios and music events all around Brockley. Another CD, Brockley Max Trax II is being produced, and the website is being completely redesigned. If you would like to get involved the next meeting is 23 March, 8pm at the Toad's Mouth café, or contact Moira Tait onmoira@brockleymax.co.uk. Check out the website www.brockleymax.co.uk for the latest festival information.

## Deptford Stories: Do you remember the old Albany in Creek Road?



Deptford Stories is a new arts and heritage project based on the history of the Albany and Deptford. Supported by the Heritage Lottery Fund, it will culminate in a promenade performance in July 2006.

The project co-ordinator, Emily Mealey, would like to hear from people who remember the old Albany in Creek Road, Deptford, who would like to share their memories and stories. Some of the stories collected will be integrated into a theatrical promenade performance that will take place on 7 and 8 July 2006.

Deptford Stories is based on 'The Deptford Ark' a history of the Albany written by John Turner, who was the Artistic Director of the Combination Theatre Group that was based there in the 1970s and early 1980s. Speaking about the history of the building John said "As the nineteenth century drew to its close, London's dockland communities were rife with unemployment, child poverty, alcohol abuse, violence, strikes and political agitation. The Albany, which was originally created by the Deptford Fund, was opened in 1897 as a response to the area's problems."

The driving force behind the establishment of the Deptford Fund was a public meeting at St Peter's Hall in Brockley in 1894 at which a local group, the Grey Ladies, expressed their commitment to relieve the conditions many people in Deptford were experiencing.

The Albany was opened to care for children, older people and young women who laboured under poor conditions in the foreign cattle slaughterhouse, (known as the Gut Girls). Classes were offered including domestic science, boot mending and Bible reading groups.

The tradition of learning has been ongoing; the modern day Albany continues to offer a variety of classes and Deptford Stories will include an educational programme to support local schools develop projects based on the curriculum themes of history, drama and citizenship. John Stainer Community Primary



School will join the cast of the July performance and, leading up to the event, will conduct research to compare the early days of the Albany in the nineteenth century with the 1980s when the Albany opened at its present site in Douglas Way. They will look at what has changed in the intervening years and what it was like to be a child in Victorian times and 25 years ago. The school's History Co-ordinator, Alex Roberts, said "We became involved in Deptford Stories because it presents a good opportunity for our students to learn about local history. The exciting thing about this project is that the children will be able to express their research findings through drama as well as the more traditional methods of reading and writing, which means that we will be able to embrace a wider range of learning styles."

In the 1930s, the Albany opened a gymnasium in its basement to offer an alternative to the inactivity caused by high unemployment. This meant that, when the economy picked up and employment opportunities began to flourish, local people would be fit, able and disciplined

enough for work.

During the Second World War, the Albany was turned into an air raid shelter, running a kitchen during the raids, and concerts to lift people's spirits.

In the 1970s, the Albany became home to the Combination Theatre Group which performed in the old hall that they renamed the Albany Empire. A number of community arts development projects were also started by the Combination, including the Co-op Pepys, Albany Video, Lewisham Academy of Music and the Basement Theatre Company. Dire Straits, Squeeze, Aswad, Stan Tracy, Elvis Costello and the Attractions, Jah Shaka, Mary Wells, Bobby Womack and the First Family of Soul, Gil Scott Heron, Dr John, Bo Diddley, Sweet Honey in the Rock and ATV all played at the Albany Empire during the 1970s and 1980s.

For further information, or if you have memories of the Albany that you would like to share, contact Emily Mealey, on 020 8692 4446 ext. 276 or email [emily.mealey@thealbany.org.uk](mailto:emily.mealey@thealbany.org.uk)

## The Sunflower Centre Complementary Therapy and Lifestyle

### The Launch Party

In the last newsletter for the Brockley Society, I wrote about the refurbishments that took place last year at 81 Tressillian Road with an invitation to come and see the house and meet with the new practitioners. The open day was held on Saturday 14th January to celebrate the launch of the Sunflower Centre whose aim it is to continue to the spirit of the work of Sydney Fisher.

Around 200 people came to spend a great afternoon, mixing and mingling with the various therapists, and sampling the delicious homemade cakes. There was a vibrant mix of young families, local people interested in what changes are taking place and practitioners enquiring into renting space at the Centre.

I wanted to take the opportunity to write about how the Centre operates and who is involved. We aim to provide family health care, from birth into old age, with a cohesive team of therapists who are able to appropriately refer between themselves and to other health care professionals to offer the best possible support through the progress of each person's health issue.

*We aim to provide family health care  
from birth into old age*

### The new practitioners

In the past, the practice has been known for its osteopathic services. We have now been joined by:

- Isabel Sheridan - *massage therapy*
- Jean Branch - *homeopathy*
- Eileen Reynolds - *acupuncture*
- Shelley Sighton - *flower essence therapy*
- Isha McKenzie-Mavinga - *counselling and Reiki therapy*
- Isha and Arike - *who will be offering a Therapeutic Personal Development group, and Rieko Oshima-Barclay - medical herbalism*

There is a homeopathic Drop In clinic where anyone can have a 15-minute session

to get some immediate help with more short term complaints, e.g.: coughs, colds, stomach bugs, without necessarily going through a full consultation. This takes place between noon and 1pm on Monday lunchtimes.

### Osteopathy

Currently, osteopathy is more represented at the practice - three osteopaths, myself, Jonathan Edis and Rowena Wodehouse provide cover on six days a week between us. We treat all types of musculo-skeletal problems, occupation related problems, antenatal and postnatal support, newborn check-ups, children, sports injuries, constitutional problems including asthma, irritable bowel syndrome, PMS, headaches/migraines and lots more. There are usually emergency appointments available with one of the osteopaths for those with acute pain or recent injuries.

I have been part of a working relationship with St John's Medical Centre in Brockley for over ten years. The GP's there are able to refer their patients to us at the Centre for osteopathy on the NHS. We also have good links with other GP practices in the area as well as other local practitioners of both orthodox and complementary health.

### Contacting us

For more information on any of the therapies available, pop in to see us at 81 Tressillian Road or else call on 020 8694 2714. There is a leaflet available for each of the treatments on offer at the Centre. You could also email us at [info@thesunflowercentre.co.uk](mailto:info@thesunflowercentre.co.uk)

We will be producing a quarterly newsletter where you will be able to read about each of the therapies at the Centre, any new developments, plus seasonal tips for maintaining your health. If you would like to have this emailed or posted to you, simply call the receptionists and they can arrange for that to happen.

There will be a dedicated website for the Centre early in the Spring, [www.thesunflowercentre.co.uk](http://www.thesunflowercentre.co.uk)

Jo Mitchell



## The Brockley Restaurant Critics

The Brockley Conservation Area is known for its gems of Victorian architecture but is it also a haven of good eating? Are there local restaurants that surprise the visitor and new residents? Can one get value for money and interesting food without pretension? With these questions in mind, our intrepid group of 'foodies' and long-time Brockley residents set off on a quest to sample most of the local eateries. One establishment is visited per month (due to busy social lives and in order to facilitate digestion and rumination) and the restaurants were visited mid-week, outside holiday seasons.

Our first visit was to **Smiles**. A tiny Thai restaurant hidden down Foxberry Road behind the Shell petrol station. Interesting and very local, the atmosphere was extremely intimate. The food was tasty but the menu was felt to have a predominance of deep fried dishes, and the prices were a little high for an informal supper.

**Mason's in Ladywell** has the comfortable interior and large windows of the Victorian pub it used to be, however the tables are much too close together even for the staff to move around! The mezze-for-four starter was delicious and generous - almost too much, in fact. Of the main courses the lamb shank was particularly enjoyed. However the rather high price of the house wine made the meal again rather expensive for a local mid-week supper.

This intrepid band of restaurant critics next ventured outside the strict boundaries of the Brockley conservation area to visit **Kaya House in Deptford** - near enough to be considered a local eatery. It is easy to see why this is a favourite local restaurant of so many people. The atmosphere is friendly (regulars receiving two kisses from the management) and the service good. The food was consistently delicious, the aubergine sambal proclaimed wonderful by one critic. A very good and well priced Merlot wine accompanied an excellent meal.

The **Phoenix Restaurant in Lewisham College** is a surprising local secret. Passing the rather grim exterior of the modern extension to the college the Brockley Critics found themselves in a smart, luxurious restaurant on the top floor. The students are trained in all aspects of catering so attentive waiters pour wine and water and offer bread and menus with great civility whilst usually more senior students cook away in the kitchens. The dinner was billed as a 'Winter Warmer' five course dinner, with a vegetarian choice for each course. The tomato and basil soup was generally thought delicious, two of our party had the seared haddock main course and two the Duck breast (well done but succulent) filled with wild mushrooms, all very good and efficiently served. The dessert 'bombe' was generally thought to have missed its target somewhat, described by one of our party as 'no more than a frozen Jaffa cake!' But the food and service was generally excellent and well served, by students who in some cases were just beginning their practical experience. And it is all marvellous value for money. About £15 per head for the five-course gourmet dinners and very modestly priced wines. In fact we liked it so much that we returned for the next Gourmet evening!

**Thai Thai on Brockley Road** was very newly opened when we visited it. The décor and the waitresses' silk dresses made a good impression. Mixed starters were an

assortment of fishcakes, spring rolls and fritters and were rather small. We chose an assortment of Thai curries for main courses and were rather surprised by the spiciness of the chicken curry and by the rather small portions of rice. In general the service at that time was a bit 'shy' and amateurish but judging by the numbers eating there now it must have improved.

The **North Pole in Greenwich** is a little out of Brockley, but near enough to be a 'local' restaurant and was part of The Times newspaper's restaurant voucher scheme. Armed with vouchers, we paid it a visit. The interior is comfortable Victorian and the menu and wine list much more sophisticated than some of the other restaurants. Our starters were crayfish and caramelised onion tarts and were generally good, the fish main courses, salmon, sea bass and cod, were good, especially the cod in puy lentils. The dessert was pleasant and the food was agreed to be very good on the deal but would otherwise have been expensive.

**La Lanterna in Brockley Road** proved to be a disappointing meal. This is a well thought-of local restaurant, but when we went the room was cold and the service uninterested. The whitebait starters were pleasant and hot but the main courses were either covered in an uninteresting sauce (the liver) or chewy (the veal) or served on a cold plate (the lamb). The house wine was expensive and sadly our visit to this small local restaurant was a disappointment.

Our final visit to date was to the strangely named **Toad's Mouth Too**, which has recently started to do set evening meals at £10 for three courses. The welcoming, homely atmosphere and odd little tables make this a very pleasant Brockley restaurant. The food was homely and reasonably priced, the house wine not so good but the Merlot was very acceptable, the mixed Greek starters were generous with good hummous and warm bread. As we had booked late some of the dishes were finished but the chicken pie and salmon pie were good as were the Moroccan meatballs. The onion pie was rather sweet. One of our party had some criticism of the custard on the dessert, but generally a nice meal finished off by excellent coffee.

So where will the Brockley Foxes eat next?

*These are the opinions of four volunteer critics. Let us know if you disagree or have other recommendations. - Ed*

### Montage Theatre Arts Adults' Courses at Brockley Primary School, Brockley, SE4

Fun, friendly classes to develop your vocal and movement self-confidence. No experience necessary for any courses and those with previous experience are very welcome.

*Bring out the star in you!*

**Musical Theatre Performance Course**  
Thursdays, 7:30-9:30pm  
Cost: £70.00 / £24.00 conc.

**Street Jazz Dance**  
Tuesdays, 7:30-9:00pm  
Cost: £90.00 / £18.00 conc.

**Tap Dance**  
Fridays, 7:00-8:00pm  
Cost: £60.00 / £24.00 conc.

Details of all Montage Theatre  
courses for adults and children:  
[www.montagetheatre.com](http://www.montagetheatre.com)  
email: [office@montagetheatre.com](mailto:office@montagetheatre.com)  
or ring 020 8692 7007

## Planning consultation decisions Good news for Brockley Conservation Area!

Last autumn we all received a consultation document on the future of the Brockley Conservation Area including some changes. 95% of the replies to the Council were in favour of the proposals for changes to the planning designation and the boundaries of the area.

We should all have received notice of these changes in a letter dated 24th January 2006. There will be a guidance leaflet published by the Planning Department in late March, which should be delivered to all households in April. If you need a copy of either the previous letter or the leaflet in April, please contact Justine Page 2028 314 6071, [justine.page@lewisham.gov.uk](mailto:justine.page@lewisham.gov.uk), or look on the web: [lewisham.gov.uk](http://lewisham.gov.uk) and look for planning and conservation.

The Brockley Society's response welcomed the Draft Supplementary Planning Document (SPD), and urged that:

- Eastern Road remain in the Conservation Area, arguing that as it is part of the visual aspect from Hilly Fields which could be damaged if there is no control on this row of houses. *Agreed*
- The Vicar's Hill houses be included to complete the visual aspect from Hilly Fields and that they are an important group of house in their own right. *Agreed*
- We also asked that Vulcan Road be retained as part of the Conservation Area, but the **Council did not agree** with us, so Vulcan Road is no longer in the Conservation Area.
- We argued very strongly that there should be only single storey buildings, garages, or annexes to the main house, in the mews. The open aspect with many mature trees can only be retained if this option is taken. **The Council agreed** and there is now a **presumption against development in the mews**. *See page 1.*
- We also argued that an Article 4 Direction should help to retain the character of our mainly Victorian Conservation Area. We have been asking for this for 20 years! *Agreed*
- Ladywell and Brockley cemeteries are now part of the Conservation Area.

### Article 4 Direction



An Article 4 Direction restricts development, mainly that seen from the highway, to protect the character of the area. It covers, among other things, satellite dishes on fronts of buildings, front gardens, walls, gates and green spaces. Any alterations to these, the façade of the building or any other parts visible from the highway will now need planning permission, even if such an alteration would not normally need permission (this is free).

So it is better to ask first before you change anything. Of course, if the alteration is considered an improvement, then it will be welcomed.

**Hilly Fields Park User Group**

**Excerpts from minutes of 6 December meeting**

**Present:** Andrew Harper (Chair), Vincent Frimpong (Deptford Supervisor, Glendale), Mike Keogh (Envirowork), Jeanette Stuart-Macdonald (Envirowork), Sean Walsh, Peter Byrne, Nobuo Okawa, Rachel Mooney, Helen Mercer. **Apologies:** Trottie Kirwan, Maggie Doyle, Jill Tritton.

**Maintenance:** AH had arranged another inspection around the park with Glendale, to get agreement on what needed doing. New list includes:

- Railings to be welded and painted at corner of HFCrescent/Montague Ave by 31/12/05
- Tennis courts: posts realigned and two new nets bought by 31/01/06
- Vicars Hill: repair fencing near bus stop by 01/02/06
- Toilets: bin to be replaced by 31/12/05

**User group notice board** frame is still in state of disrepair: AH to chase up. **Bench** by bowling green: slabs have been repaired. Area in front now needs re-seeding. **Mud-scraper brushes:** don't need replacing. VF to ask Ron Bell to encourage more footballers to use scrapers. **Play area:** No sand in sand pit all summer, although Glendale had said it would be refilled in Spring 05. Base now exposed. VF will ask for sand for next Spring. Gaps in playground railing have been repaired.

**Meadow:** Meeting planned about grass cutting regime for meadow. **Park Keepers:** Letter of thanks had been sent by Prendergast School to Barry Walker, pupils felt reassured by keepers' presence. **Manhole cover:** broken in half near school, off Eastern Road. Off the path, but still a potential hazard. **Woodland/Conservation Area:** Envirowork have built new steps. Protruding nails need to be made safe.

**Entrance signs:** Eastern Road sign needs replacing or updating and moving forward to encourage people to go in. Funding sought for new signs. **Green Gym:** session planned for 19 December with BTCV: scrub clearance around entrances. With local advertising for such an event many local people might be happy to join in. **Fence painting:** NH has promised this will be carried out 'in due course'.

**General:**

**Dog fouling:** To encourage more dog owners to be responsible suggested that notices be put on boards saying that it is a finable offence and info on dangers of fouling to children. 'Worthy-bags' could be provided at the Bothy for dog fouling. Bins attached to lamp post would mean less clutter and easier to see. **Building work at Prendergast:** Grass slightly discoloured. To be monitored and progress checked in spring after new growth. **Tree:**

More trees in Adelaide Ave/Montague Ave area had been requested. Was there an original Victorian strategy? Tree planting should be looked at in context of the entire park, with consensus on what and where trees to be planted. RM had been looking for funding to do an overall masterplan to avoid ad hoc additions to park and enable all groups to work to a clear vision. Only funding available involves high levels of match funding. Glendale responsible for saplings, Lewisham for larger trees.

**Paths:**

Park Keepers thought **footpaths** needed sorting: in poor state of repair. Loose tarmac bit of a hazard at farmer's market - a Health and Safety issue. Glendale had filled in pot holes but there is not enough money to resurface.

**Development Sub-Committee had a three-pronged approach:**

- Focus on getting maintenance up to scratch. Same issues and problems came up every HFPUG meeting.
- Outreach and Interpretation to encourage more park use and awareness; get more people interested in some of fund raising activities.
- Improvement projects and fund-raising

The first event was the following Sunday's Wildlife Walk. A flyer had been handed out to interested people. Proposed to apply for funding to help organise and advertise events, and for playground, probably via Brockley Society.

**Envirowork/Bothy Regeneration**

Jeanette updated on Envirowork. Concern was raised at how the issue of cricket pavilion had arisen: should be looked at from all perspectives and HFPUG informed from outset. Lots of things had been improved in the park by Envirowork, e.g.: bald patches repaired by stone circle, Grass mowing. Envirowork listed tasks completed.

**A.O.B.**

Stand in park: keepers do a very good job and are very conscientious. There was no truth in rumours that dogs were to be banned from park.

**Next Meeting of HPFUG:** Tuesday 14 March at the Bothy. All those interested in improving Hilly Fields welcome.

**Phoenix Restaurant**  
Lewisham College 020 8694 3294/3264  
[www.phoenix-restaurant.com](http://www.phoenix-restaurant.com)

Last time I visited, I promised to give this Brockley Restaurant a mention. Situated in the Breakspears Building, this is the most sophisticated eating establishment in Brockley and the food and wine prices are very reasonable. The food is generally of a very high standard. Because this is a training restaurant, where both chefs and waiting staff are learning, not everything is perfect and sometimes tutors have to give a little on-the-spot advice.

The restaurant opens on Tuesday to Friday lunch times, 12.00 to 1.30pm. Different years do the catering. I tend to go on a Friday when it is the Year 3 students and have had some excellent meals, paying about £5 for a main course. When less experienced students are cooking, the price is lower. Jamie Oliver trains his students here and many go off to work in top restaurants.

There are evening events too (log on to the website to find out when the next one is). These usually start at 6.30 but it is worth getting home from work early to take advantage of one of these gastronomic experiences.

All tips are used to take the students to top restaurants in town where they might end up working one day. It's good to know that you can help to support the chefs of tomorrow and, although everything isn't always perfect, your constructive comments are always welcome.

It's definitely worth a try and it's in walking distance of all corners of Brockley!

*Olwen*

**News from the Old Bothy**

(behind the Bowling Green)

Envirowork Lewisham became fully operational from the old park keeper's depot in Hilly Fields Park in early September when we employed our first set of 15 trainees. We have been encouraged by the support we have received from the local community and, apart from the odd concern over noise first thing in the morning and encroaching outside our boundaries into the Park (issues we hope we have addressed) we are beginning to forge productive relationships with local groups, especially with the Park User Group and the local Bowls Club.

Our trainees have painted the outbuildings next to the Bowls Club pavilion and helped with other jobs around the Bowling Green and in return we have been allowed to use the Pavilion for a number of classroom training sessions. Mike Keogh, our training and education officer, is working closely with Helen Mercer and Rachel Mooney of the User Group and in December led a Wildlife Walk nature trail through the Park which was attended by over 20 local residents and finished back at the Bothy for mince pies. Mike, Helen and Rachel are also organising a History Tour of the Park led by Gillian Heywood on 12 March starting at 10am from the Old Bothy. All welcome.

Our trainees have also worked with Mike putting in rails alongside the steps of the Nature Reserve in Eastern Avenue and in maintaining and developing the shaded garden next to the Bothy. We have recently had delivery of a converted mobile container which can be used as a meeting room for up to 15 people and all future Park User Group meetings will be held there. If any local community groups are looking for an evening weekday meeting venue we'd be happy to talk to you.

We will shortly be employing our own qualified arboriculturist with certificates in tree climbing and aerial rescue, so any tree work that needs doing, we'd be happy to quote for. Meanwhile, we have been very encouraged by the range of projects, both public and private, that we been contracted to work on, including the regeneration of the Downham Woodland Walk, an environmental clean-up of New Cross Gate, assisting in the development of the new town centre open space, and several school projects.

Anyone interested in the landscaping and environmental clean-up services we have to offer, or in renting the Bothy for meetings, please contact Peter Ranken or Mike Keogh on 020 8469 9620.

**Margaret Blackford**  
1936 -2005

Sadly, Margaret passed away last autumn and her funeral was on 17th November 2005. Margaret moved to Tyrwhitt Road in about 1974 and quickly became part of the community. Even though she ran her own business, she was Treasurer of the Brockley Society for at least 5 years, where she brought her 'no nonsense' ideas to the committee and as Treasurer dealt with the difficult accounts for the Fyre with her usual competent and good humour. Many were the times when she brought the committee down to earth, and brought common sense to the discussion! We missed her in 1997 when she moved to Canterbury, to be near her family. Within two years she was diagnosed with cancer, which she has fought for six years. To those of us who remember her, she was a cheerful, down to earth member of the community, always willing to help others; she was still positive even through her long illness, never giving up, and I for one, will miss her.

*Gillian*



## Hilly Fields

2006 is Centenary Year for the Francis Drake Bowls Club on Hilly Fields and to celebrate, a book has been written about its history. Below is a chapter about the Pavilion. The Club are always looking for new members and we can offer coaching, for young and not so young, free of charge. So why not join this year and become a part of the history of our next hundred years?

### The Pavillion

*'A bower in the wilderness'*  
Kahlil Gibran, *The Prophet*

Try as I might, I have not been able to establish when the pavilion at Francis Drake Bowls Club was built. I have found no mention of the building in the Borough Records or the early newspapers. Two independent opinions, based on the architecture and the type of brick, suggest it was built in the late fifties or early sixties.

The earliest of the Honours Boards that the Club possesses begins in 1959, from which one could infer that the Board was presented at that date because, at last, there was a wall to put it on. However, the Men's Minutes Book begins at a 'Committee Meeting held at Hilly Fields, June 18th 1959', and no mention is made of a new pavilion. Indeed, the Honours Board itself is minuted at a meeting in October 1960 as being 'presented to the Club by the then youngest member, Mr. D. Jones', but no thanks are expressed regarding a new wall on which to put it.

Which leads one to guess that the pavilion must have been built at least two or three years before the end of the fifties.

*'Be it ever so humble, there's  
no place like home.'*  
J.H. Payne, 1823

The first direct reference to the pavilion is not found until 1970, and a rather half-hearted one it is, too: 'The Sec. mentioned the club room could be made more useful by making a few changes. The meeting thought this was not really worth doing.' (Committee Meeting, 27.7.70)

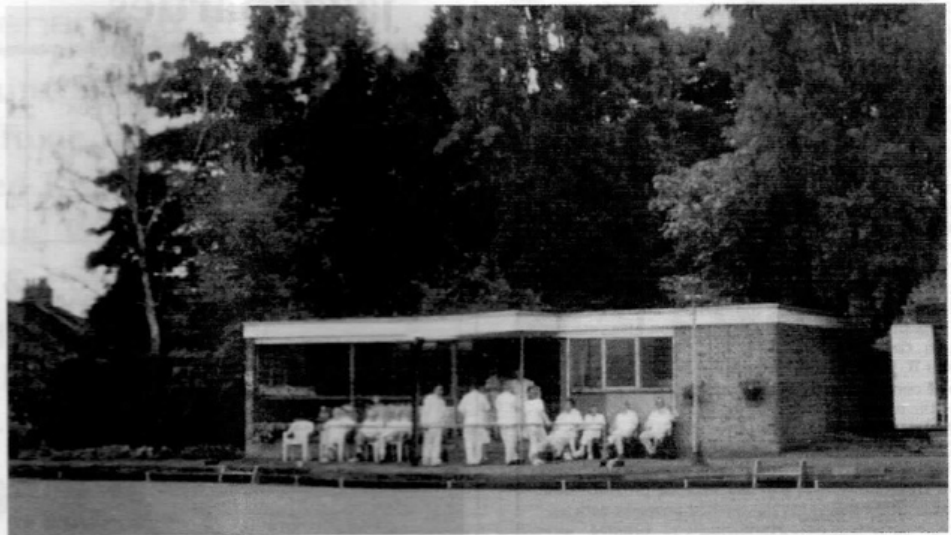
Another twenty or more years were to pass before the state of the pavilion took on more importance. In 1993 the Secretary, Don Thurnell, wrote to Paul Hanks, the Lewisham Borough Parks Manager, requesting the installation of security grilles to be fitted over the front of the veranda: 'Not only will it stop the drug-users using it for their purposes, as well as urinating all over the veranda, it will also secure the premises against vandalism.' (Letter, 27.1.93)

Not only did the Council supply the security grilles but, in the same year, much to the Club's surprise, the two portacabins were installed, one for the use of visiting teams to change in, one as a store-room. And, in 2001, the toilets were rebuilt.

*'Your house is your larger body.'*

So says Kahlil Gibran in *The Prophet*, which is a wee bit disturbing if applied to the Francis Drake BC pavilion. For a start, it's falling down and has been for years due to subsidence. Then there's dirty great cracks in the walls that get wider every season. Then there's the leaks in the roof because of its flatness. The back walls are festooned with graffiti and there is a distinct lilt to the front porch.

However, the Council have confirmed it is



safe for another ten years and, besides, there is no money to build a new one. But do we want one?

There is something about our pavilion that is like no other. The open veranda looks directly over the bowls green; the long table area means both visitor and home team can sit together during the tea-break and 'mingle'; and those who fancy a bit of peace can quietly meditate in the kitchen area.

So, like a 'body', yes, it could probably do with a thorough makeover and, yes, there are bits and pieces that are falling off or giving us 'gyp' but, when all's said and done, we're comfortable with it, for the time being, just as it is.

*Extract from 'Francis Drake Bowls Club -  
A Biased History by Jill Tritton'.  
Phone 020 8691 8926  
if you would like to try a game of bowls.*

**PLAY BOWLS -  
IT'S BRILLIANT!!**



**Where all ages meet  
and have a sporting  
good time on our beautiful  
Hillyfields rink from mid April.  
Woods and tuition for beginners.**

**Telephone Jill or Bill:  
020 8691 8926**



**SPORTING  
SURREALISM  
AT ITS FINEST!!**

## PLANNING APPLICATIONS

**188 Brockley Road**, Variation of Condition (3) of the planning permission dated 27 June 2002 for the change of use of the basements at 188 and 188a Brockley Road from an estate agent (Use Class A2) to a mixed-use coffee shop and gallery (Use Classes A1/A3) with seating area in the rear garden and the construction of a pergola over the rear patio area. To open in garden until 9 PM.

**Granted at Committee**

**5 Coulgate Street**, The construction of a part single/part two storey extension to the side of 5-6 Coulgate Street, to provide a shop/taxi office on the ground floor and additional residential accommodation on the first floor.

**Granted**

**85 Upper Brockley Road**, The demolition of the rear additions and the construction of a single storey rear extension at 85 Upper Brockley Road to provide additional living accommodation. **Granted**

**87 Tressillian Road, Flats A & B, 97 Tressillian Road, Flats a,b,c, 95 Tressillian Road, London** The installation of double glazed, timber, sliding sash replacement windows in the upper ground and first floor front elevation, together with timber casement windows to the lower ground floor in the front elevation and double glazed, PVCu, casement windows in the rear elevation.

**Granted**

**2 Breakspears Road**, Certificate of Lawfulness in respect of the use of 2 Breakspears Road, as 4 one bedroom self-contained flats. **Granted**

**Doctors Surgery, 287a Lewisham Way**, The demolition of 287A Lewisham Way and the construction of a three storey and semi basement building, comprising 8, one bedroom, self-contained flats, together with associated landscaping and provision of refuse and cycle stores and 4 car parking spaces and a double garage with access onto St. Johns Vale. **Refused**

**96 Tressillian Road**, Details of site investigation submitted in compliance with part (a) (i) and (ii) of Condition (3) of the planning permission dated 15 November 2005 for the demolition of garages and the construction of a two bedroom house with integral garage to the rear of 96 Tressillian Road, together with the provision of 2 car parking spaces for the existing property with vehicular access onto Harefield Road. **Granted**

**168 Lewisham Way, London**, The construction of a single storey building to the rear of 168 Lewisham Way to

provide a single storey one bedroom dwelling house, together with the provision of a parking space and associated landscaping. The demolition of the existing stable building at the rear of 168 Lewisham Way.

**Refused at Committee**

**8 St. Margarets Road**, Lawful Development Certificate in respect of the construction of a single storey extension to the side of 8 St. Margarets Road, to provide additional living accommodation. **Granted**

**101 Loampit Vale**, The alteration and conversion of 101 Loampit Vale, together with the construction of a two storey extension to the rear, to provide additional office accommodation and workspace on the ground floor and living accommodation on the first floor. **Refused**

**187 Brockley Road**, Change of use of the ground floor shop premises, from grocery shop to hot food takeaway together with the installation of an extraction duct to the rear elevation. **Granted**

**9 Brockley Gardens**, The construction of a single storey extension at the rear together with the construction of a dormer window to the rear roof slope and a rooflight in the front roof slope. **Granted**

**40 Tyrwhitt Road**, The change of use of the first floor lounge to provide a baby unit, in connection with the existing nursery. **Granted**

**14 Harefield Road**, Lawful Development Certificate in respect of the installation of roof lights in the front and rear roof slopes in connection with the conversion of the roof space to provide additional living accommodation. **Granted**

**56 Breakspears Road**, The demolition of the existing garden room and the construction of a single storey extension to the side and rear. **Granted**

**186 Lewisham Way**, Listed Building Consent for the alteration and conversion of the first and second floors at 186 Lewisham Way, to provide 4 one bedroom self-contained flats. **Granted**

**Flat 7, Chalsey Lodge, Chalsey Road** Lawful Development Certificate in respect of the operation of a small courier/car hire business as part of the dwelling. **Granted**

**50 A, B, C, D, Wickham Road**, Certificate of Lawfulness in respect of the use of 50 Wickham Road as four flats. **Granted**

**60 Geoffrey Road**, The construction of a part single/part two storey extension to the rear at lower ground and

ground floor levels, together with the reinstatement of the existing boundary wall and piers to the front, alteration and painting of the front elevation and installation of replacement timber framed, double glazed windows to the front and rear elevations. Conservation Area Consent for demolition of a section of the front boundary wall at 60 Geoffrey Road. **Granted**

**6c, Breakspears Road,**  
The installation of two rooflights in the front roofslope **Granted**

**83 Upper Brockley Road,**  
The alteration and conversion to provide 1 three bedroom self-contained maisonette and 2 one bedroom self-contained flats, together with the construction of a single storey rear extension, formation of a lightwell to the front, alterations to the front and rear elevations and provision of refuse store area. **Granted**

**Flat B, 16 Breakspears Road,**  
The construction of a single storey wooden building to the rear to provide a study. **Granted**

**96 Tressillian Road,**  
The demolition of garages and the construction of a two bedroom house with integral garage to the rear of 96 Tressillian Road, together with the provision of 2 car parking spaces for the existing property with vehicular access onto Harefield Road. **Granted**

**6 Rokeby Road,**  
Lawful Development Certificate in respect of the construction of a single storey extension to the rear, to provide additional living accommodation. **Granted**

**Pending**

**106 Tressillian Road,** The construction of a single storey extension to the side and rear of 106 Tressillian Road to provide additional living accommodation.

**59-61 Loampit Hill** The retention of the new shopfront.

**2a Ashby Road** The construction of a two storey extension above the existing single storey workshop to provide a two bedroom self-contained maisonette.

**1a, Wickham Road** The alteration of the elevations of 1a Wickham Road, in connection with the conversion of existing garages at lower ground level to provide 1, two bedroom, self-contained flat, together with the provision of 2 car parking spaces and formation of a vehicular crossover onto Wickham Road.

**16, Coulgate Street, Brockley** The demolition of the existing building on the site of 16 Coulgate Street and construction of a part four/part five storey building incorporating balconies, french windows and roof terrace, comprising a mini-cab office /commercial unit (Use Class A3/B1), 3 one bedroom, 1 two bedroom and 3 studio self contained flats, together with the provision of bicycle and bin stores.

**27 St. Margarets Road** The construction of a single storey extension to the rear of 27 St. Margarets Road.

**2 Manor Avenue** The construction of a new boundary wall with steel gates to the side of 2 Manor Avenue, together with alterations to the rear to incorporate the existing garage to the side with the basement flat.

**187 Brockley Road, London** The construction of a 2 storey two bedroom house to the rear of 187 Brockley Road.

**1/2, Harefield Mews** The demolition of existing buildings on the site of 1/2 Harefield Mews and the construction of a two storey plus roof space building, comprising 8, one bedroom, self-contained flats, together with associated landscaping and provision of 10 bicycle spaces and refuse stores.

**70 Rokeby Road** The construction of a single-storey building to provide a garden room in the garden.

**Trees**

**Rear of 36 Cranfield Road** Pollard a Sycamore tree to secondary points at approximately 10m. and crown reduce and reshape by 30% a Eucalyptus tree. **82 Wickham Rd** Reduce back to most recent reduction points and remove epicormic growth from a Lime tree, reduce height of a Buddleia by 1-1.5m. and lightly reduce a Sapling, all at the rear of 82 Wickham Rd. **84 Wickham Road** Reduce back to most recent reduction points a London Plane tree. **281 Lewisham Way** Fell three Sycamore trees at the rear of The Stone House, 281 Lewisham Way. **101 Breakspears Road** Fell an Ash tree at the front of 101 Breakspears Road. **55 Breakspears Road** Fell four Sycamore trees at the rear of 55 Breakspears Road. **186 Lewisham Way** Remove five Conifer trees at the Coach House, rear of 186 Lewisham Way. **Hillyfields Nature Reserve** Remove three Hawthorn trees and crown reduce by 25% an Ash tree within Hillyfields Nature Reserve, Hillyfields Park. **41 Adelaide Avenue** Fell two Horse Chestnut and a Sycamore tree, reduce by 30% and reshape a second Sycamore tree. **43 Breakspears Road** Remove two stems of a Bay tree and reduce remaining stem to 2m. and crown reduce a Birch tree by 25%, both trees in the rear garden. **6 Manor Avenue** Remove two Lime trees from the front of 36 Manor Avenue. **47 Wickham Road** Fell one Lime tree and reduce by 50% five further Lime trees at the front. **160d Lewisham Way** Fell five Ash trees, two Sycamores and a Eucalyptus tree and carry out minor remedial and maintenance work as detailed in the schedule to Cherry, Ash and Sycamore trees.

## jazz4parties

world class musicians available to play in the privacy of your home for surprisingly modest charges

**Simon Woolf**

020 8691 7516

email woolf.notes@virgin.net

## HONOR OAK GALLERY

3rd - 31st May

**Etchings by Brian McKenzie**

Opening times

Fri 9.30am - 6.00pm Sat 9.30am - 5.00pm

52 Honor Oak Park

London SE23 1DY

(020) 291 6094

## BROCKLEY SOCIETY

### BARBECUE



The Society owns a very large and splendid barbecue.

You can hire it for the modest fee of £10 for the weekend.

Contact Bob on 8692 2289

## Graphic Designer

**Business + Advertising + Personal**

For all your Graphic requirements using professional Macintosh software

ian.hibbert@btconnect.com

call Ian on: 020 8690 5624

## Table Tennis



Every Wednesday evening  
**Crofton Park**

*All abilities welcome*

**Contact David**

020 8691 3652

*for further information*

## ADVERTISEMENTS

Small	3.6cm x 6cm	£15
Medium	7.5cm x 6cm	£25
Large	12.4cm x 7.6cm	£40

*All ads must be prepaid*

CIRCULATION 4000

READERSHIP 8000

to advertise, phone 07761 391739

or email prbyrne@clara.co.uk



**The World's Leading Music and Movement Programme for Children Newborn to 7 Years**

Classes held at Mycenea Hs, Blackheath SE3 and St John's Church, Lewisham Way SE8

Tel 020 8320 0805 for a free trial lesson or visit [www.kindermusikwithjenny.co.uk](http://www.kindermusikwithjenny.co.uk)

## Simon Woolf

Piano Teacher

*By ear or from music*

A fresh approach drawing on top flight performance experience in both jazz and classical fields

I am also an experienced classroom teacher and a registered tutor with Greenwich Music Services

**100% success in Grade exams**

*Beginners Welcome*

020 8691 7516

email: woolf.notes@virgin.net

## AJC PLASTERING

(Fibrous & Solid)

All forms of modern and classic plastering  
Moulding, rendering, cornicing and spread plastering

**Contact Andrew for:**  
Professional, local and friendly estimates

Mobile: 07956 474313

Tel/Fax: 020 8694 0908

## Superb Guest House in Heart of Brockley

St James's Guest House,  
48 Breakspears Road, Brockley, London SE4 1UL

Tel: 020 8691 1206

Fax: 020 8691 0150

Mobile: 07956 403692

*Friendly family run business, newly opened*

PRICES ARE VERY REASONABLE



## C.J.'s Property Maintenance & Repairs.

**Builder, Carpenter, Painting & Decorating,  
Restoration work - Home Improvements  
Comprehensive Fitted Kitchen Services.**

**Landscape Gardening, Walls, Fencing,  
Patos, Paths & Ponds etc.**

**Exterior painting and repointing,  
Insurance work undertaken**

*Please ring Colin Brooks for free advice & estimates on*

**020 8695 6234**

## **Fresh Start Cleaning**

*Moving House? So Little Time? So Much To Do?*

WE SPECIALISE IN '1-OFF' HOUSE CLEANS - WHETHER YOU ARE BUYING OR LETTING -  
MOVING IN OR OUT - ALSO BEFORE AND AFTER -

FUNCTION CLEANS (PARTIES, WEDDINGS, ETC.) - DOMESTIC & COMMERCIAL

FULLY INSURED - WEEKEND AVAILABLE - COMPETATIVE RATES

FREE NO OBLIGATION QUOTES

Tel: 020 8318 1818 - Mobile: 07956 589394

## **PROPERTIES TO RENT**

1st Class Flats & Houses In  
S.E. & S.W. London.  
Friendly Reliable Service



**DESIMAN LIMITED**  
RESIDENTIAL PROPERTY INVESTMENT & LETTINGS

**Tel: 020 8691 2400  
Fax: 020 8691 2428**

VISIT OUR WEBSITE  
[www.desiman.co.uk](http://www.desiman.co.uk)



**ESTATE AGENTS & VALUERS**

369 Brockley Road  
Crofton Park, SE4 2AG  
40 yards from Crofton Park Station  
Telephone 020 8691 1516

## **Music Tuition Cello & Piano**

Friendly graduate of Royal  
Academy of Music with LRAM  
Teaching Certificate

[emilymitchell@celloplayer.co.uk](mailto:emilymitchell@celloplayer.co.uk)  
**07779 164608**

## **CLADDA ENGINEERING Ltd**

### **TOOLS CASH & CARRY**

**PROFESSIONAL, DIY, GARDEN, AUTOMOTIVE  
HAND AND POWER TOOLS**

DRAPER, DEWALT, BOSCH, MAKITA, WORLDWIDE, HILTI, RYOBI, KANGO



**CALL FOR FREE CATALOGUE**

Carrick House, R/O 136 Tanners Hill, London SE8 4QD  
FAX: 0208 694 8510 TEL: 0208 469 3991

## **Aromatherapy Deep Tissue Massage Reflexology**

**Sue Thomas** ITEC MGPP AC Reg

New Cross Natural Therapy Centre

Tel: 020 8469 0858

& Honor Oak Tel: 020 8699 0287

Back, Neck & Shoulder Pain.

Anxiety, Tension & Stress. Relaxing & Revitalising

15 years experience

## **LOCAL CARPENTER**

**31 YEARS EXPERIENCE.**

*Carpeting and Plumbing  
at Competitive Prices*

Doors, locks, kitchens and flatpacks,  
windows, partition walls, period  
restoration and traditional built  
cupboards, wardrobes & bookcases.  
Bathroom refurb & Window refurb  
Also heating engineer, all plumbing,  
from a dripping tap to a new boiler.

Decorating. Garden decking.  
no call out fee

**All work guaranteed**

**Free estimates. Call Len**

**020 8425 1901 / 07976 579 721**

*No job too big or too small!*

## **Website Design**

Webble specialise in competitively  
prices websites for individuals and  
small businesses.

For more information on the cost of a  
website contact Sara on

**07931 567 259 or visit  
[www.webble.co.uk](http://www.webble.co.uk)**

## **Analyse, Build and Harmonise through the Voice**



Your true voice can be accessed  
through breathing and vocalising  
exercises performed in specific  
postures. This allows you to tap your  
full energetic potential and reconstruct  
your very own instrument, your body,  
so that it serves you best.

Brigitte Deneck is fully qualified in  
the Wilfart Method.

She offers individual sessions and  
group workshops in Brockley.

**Call 07931 78 48 68**

## **Five Element Acupuncture**

*an ancient form of healing for a modern world  
At Sidney Fisher Clinic from Jan 2006*

ACUPUNCTURE CAN HELP WITH A VARIETY OF  
PHYSICAL, EMOTIONAL AND STRESS RELATED  
CONDITIONS, AND PROMOTES  
GENERAL WELL-BEING AND VITALITY

**Eileen Reynolds**

**020 8691 8548 / 07904 937781**



## MASONS BAR RESTAURANT

38 LADYWELL ROAD

LONDON SE13 7UZ

TELEPHONE 020 8314 0314

## Neil Fennel D.O. M.L.C.O. Itcc Leandra Cole BA (Hons) PGCE Itcc

BROCKLEY NATURAL HEALTH CENTRE

Osteopathy (£30 for 45minutes) • Palmistry  
Womens' Health & Wellbeing  
Osteomyology • Cranial Osteopathy  
Reflexology • Lifestyle Awareness  
Craniosacral Therapy • Classical Osteopathy  
also Magnotherapy and Energy Conservation

\* Free Assessment \*

RELAX DETOX RESTORE

"*Professionails*"

☎ 020 8691 1051

193 BROCKLEY ROAD LONDON SE4 2RS

*please mention this advert when contacting us*

## Professionails & Tanning

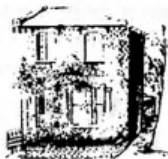
Nail Extensions  
Freehand Nail Art  
Sunbeds  
Su-Do Tanning  
Nail Products  
Dermologica®  
St. Tropez

☎ 020 8692 3073

Now Open

Discounts available with this voucher  
Gift vouchers available

## Rocodells



Estate &  
Lettings Agents

388 Brockley Road, Brockley,  
London SE4 2BY

020 8691 8731/0313

Call now for free valuation

# Rosie Riley



## PLUMBER Handywoman

20 Years Experience

Tel: 020 8692 3375

Mobile: 07932 566 039

FREE ESTIMATES



## CATS @ HOME

Formerly Pet and Plant Nannies, established 1986

We care for your cats in the comfort and security of their own home during your absence. We provide a reliable, trusted and confidential service recommended by Veterinary Surgeons and endorsed by our many satisfied clients. References are available and we are fully insured.

*If your best friend does not enjoy your holiday contact*

Carole Leonard - Steve Humphries - Viv Hutter

Telephone 020 8692 0023

email carole@cats-at-home.com - website www.cats-at-home.com

We will be happy to discuss your cat's individual requirements

## The Sunflower Centre

Complementary Health and Lifestyle

Osteopathy, Homeopathy,  
Acupuncture, Massage Therapy,  
Flower Essence Therapy, Reiki,  
Counselling and Medical Herbalism.

(see our article in this issue)

All therapists can help a variety of acute and long-term problems. We aim to provide family health care from birth into old age.

- all types of aches and pains
  - general wellbeing • stress and anxiety
  - skin, hormonal and digestive problems
  - ante- and postnatal care; newborn check-ups
- Full disabled access and facilities

For more details or advice please contact us at  
81 Tressillian Road, Hilly Fields  
020 8694 2714

info@thesunflowercentre.co.uk

# The Gardening Doctor.co.uk

'Nitrogen for shoots, phosphorus for roots, potassium for flowers and fruits'

## Dr Jim Kelly

Bsc Msc PhD MInstP CPhys (Director)

130 Breakspears Road

Brockley

London

SE4 1UA

T: 020 8305 6571

M: 07745 448 137

Hard landscaping

Horticultural advice

Shrub & tree planting

Flower border husbandry

Water feature construction

Seasonal lawn & hedge care

Patios and container planting

Garden maintenance and weeding

Summerhouses, greenhouses and sheds

**your first choice in garden care**

## MGC Secretarial Services

Word-processing - Letters, CVs,  
Forms, Projects, Theses, Accounts,  
Fax Service, Photocopying, Binding,  
Laminating, Passport Photos,  
Small Volume Printing.

Tel: 020 8469 0634 Fax: 020 8469 0639  
353a Brockley Rd, SE4 2AG