

BROCKLEY SOCIETY



Issue 99 November 2003

Delivered free to 4000 households

Charity No: 1004245

Brockley Society Annual General Meeting

Thursday 13 November 8pm

Toad's Mouth Too

188 Brockley Road, SE4

Speaker: Mark Sheahan

local award-winning inventor and
'Pioneer of the Nation' See article page 2

All Welcome!

BrocSoc would like to welcome anyone who wants to come and meet other people from Brockley. Any contribution and ideas are appreciated. Whenever a group of people get together in a positive way the end result is beneficial.

What would you like to happen in Brockley? You can make a difference - traffic, road safety, parking and public transport? Or inspiring new ideas!

You can have your voice. Nothing happens if people don't voice concerns. Anything of concern to local people in Brockley is worth talking and meeting about. We can be a part of it!

Brockley Cross Action Group AGM

Tuesday 25 November, 8pm

St Andrews Church, corner of Brockley and Wickham Roads. All Welcome!

BrocSoc's Fun and Games

Saturday 13 December 11am-1pm

As part of Farmers Market on Hilly Fields (10am - 4pm). Join us for a social gathering with extra fun for children.

Carol singing

Monday 22 December 7pm.

Meet corner of Harefield/Tressillian Roads and sing round the houses for about an hour. Proceeds to Crisis at Christmas.

Last year's efforts raised £70.

BROCKLEY SOCIETY

Chair	8692 5027
	prbyrne@clara.co.uk
Vice Chair	8691 1463
Fayre general	8691 7234
Fayre outside stalls	8692 0772
Newsletter	8692 3829
	c.cowen@btinternet.com
Newsletter distribution	8694 8144
Police Liaison	8692 6977
Transport	8691 1463
Local History	8692 6977
Environment & Hilly Fields	
Park Users Group	07958 58 58 09
Planning & Highways	8692 6977

Everyone living in the Brockley Conservation area is automatically a member of the Brockley Society. The Brockley Society welcomes all - regardless of race, religion, gender, sexual orientation or physical disability.



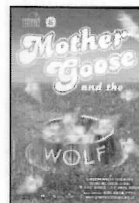
BROCKLEY SOCIETY CRAFT FAYRE

Saturday 29 November 12 noon to 5pm

Lewisham Art House 140 Lewisham Way, SE14.

Stalls and information: 8691 1463

Fine quality handmade crafts teas and refreshments
Entrance 50p



Panto!

**Mother Goose
& the Wolf**



**Saturday 13 December
Matinee 2pm**

BrocSoc has again arranged bargain seats for children and accompanying adults to the Bubble Theatre Pantomime at

Greenwich Theatre

Transport from Lewisham

Passenger Services at a generously reduced rate

Children's tickets: £3.50, Adults: £6.00
(including transport)

Phone Debbie on 020 8691 8945
to order tickets

NUMBERS LIMITED SO HURRY!

Reprieve for Brockley police station!

For the last nine years we have been told that Brockley police station, together with Ladywell and Lee, would close when the new monster police station opened in the centre of Lewisham. Together with the horses from Dulwich and the area CID, Brockley Sector - and police from Ladywell and Lee - would move to the new super police station.

Brockley Police Station in Howson Road was closed for about five years until Inspector Wayne Chance and a group of volunteers, headed by Janet Logan, worked together and reopened the front desk in June 2001. Since then it has been open from 10am till 2pm, Monday to Friday, and the Brockley Sector police have continued to work from the station.

We had tried all manner of ways to reach the attention of Metropolitan Police Commissioner Sir John Stevens, but failed miserably. Then we heard he was answering questions on LBC radio on 30 September.

I was able to ask him: 'When you came into office, you said that no more police stations would be shut, so why is Brockley to be shut after 4 November, when Lewisham opens?'

At last we had reached Sir John - and he did not immediately know the answer!

We appeared to cause a furore in the Met, with messages going back and forth as Brockley was talked about by all! By Friday 10 October we were told the good news:

Brockley Police station is to stay open for six months. The front desk will be run by volunteers, and Inspector Leaver, the sergeant, beat officers and PCSOs will also work from the building.

During that time Lewisham Police are to find a suitable building in Brockley to continue the work when the old building is finally shut.

We hope the position of the Brockley police is now secure forever and they will always work out of a 'cop shop' in the area. No one wanted the sector moved and none of the officers wanted a long trek before starting work. This looks a good thing for all!

- If you have any suggestions for a suitable property please contact Janet Logan or Ian Leaver at the Police Station on 0208 284 8525, Monday to Friday, 10am till 2pm.

Gillian

Volunteers Needed - Victims of our success!!

Now we need more volunteers to staff the front desk. Several have left for personal reasons - one to have a baby, two to take up jobs as Station Officers in other sectors.

Full training is given and you work with an experienced volunteer until you are happy to work on your own. The work entails:

- Acting as receptionist for agencies who provide a service, like Victim Support, Citizens Advice Bureau, Trading Standards, Credit Union.
- Dealing with members of the public wanting to report theft, harassment, deception, vehicle offences and other crimes, lost and found items, self reporting forms for accidents, data protection information requests and other varied enquiries.
- Making the tea is optional!

The work is varied and never dull, the company always interesting! Do as little or as much as you like. One day, 10am till 2pm, once a fortnight is one suggestion.

If you would like to know more, phone the 020 8284 8585, or just walk in when we are open: Brockley Police Station, 4 Howson Road, SE4.

Have you seen the poem on Shardeloes Road?

St Peter's Church Excavation

To celebrate the Time Team Big Dig, BrocSoc undertook their own excavation to discover any remains of the 12th century Premonstratensian Abbey.

Evidence for the abbey is mentioned in the History of Kent when in 1852 tiles and bricks were found during the cleaning of a pond. A nearby visible long mound was suggested as the site of the monastery. Both the pond and these remains are recorded on the 1871 Ordnance Survey map of the area to the north-west of St Peter's church on the site of modern Beverley Court.

Rev. Corinne Tournay, vicar of the Church, kindly gave us permission to put in two 1 metre test pits at the east end of the church.

Armed with pickaxes, spades and trowels, several members of BrocSoc and others who signed up at the Fayre arrived on the morning of 28 June to dig. We aimed to remove the topsoil and reveal the archaeological layers underneath. One test pit was opened to the south-east of the nave and it quickly became apparent that beneath the topsoil was the natural sandy clay with no archaeological layers. My suspicion is that they were removed during the construction of St Peter's.

Another pit was opened on the northern side of the nave. Here, the trench was full of disturbed material, such as bits of plastic, copper nails, bottles etc. However, we were not without finds such as 19th century roof tiles, glass, and bits of iron. And not all were modern - some of the glass was Victorian, including a piece of red glass showing pitting with sand during the manufacture process. The most exciting find of the day was a prehistoric stone flake with evidence of retouching along one side to create a straight edge. It is difficult to date because it was in the topsoil and is therefore in a disturbed context but would date from anywhere between 7,000 BC to the end of the Iron Age 2,000 years ago.

It was an exhausting day, not least because of the wonderful weather, but everyone had a great time. Our appetites have been whetted, however, and we would like to do some further detective work in locating the Premonstratensian abbey. To this end, if anyone living in Beverley Court or surrounding houses is willing to let us have a poke around in the flower beds please get in touch with Gillian on 020 8692 6977.

And if you would like to take part in some 'garden-walking, we'd be pleased to hear from you.

Moira



Brockley's inventor wins major prize

'Inventing can bankrupt you (most likely), turn you potty (if you were not already), or change your life for the better,' said Brockley resident Mark Sheahan, who has scooped three major awards in the face of stiff international competition for the innovative closure device 'Squeezeopen' at the INPEX 2003 show in Pittsburgh, USA.

He was also invited to Buckingham Palace on 13 October when the Queen hosted several hundred people at the 'Pioneers of the Nation' event.

'It was a surreal day,' said Mark. 'In the morning we were doing a photographic shoot for a calendar, and also had a roving TV camera doing a pilot 'fly on the wall' documentary about inventors. Then Buckingham Palace, with people like Trevor Baylis (inventor of the Freeplay radio), Mandy Haderman (Cup Anyway product) and many other dignitaries.

'I was fascinated by the things on display in the five reception rooms, such as original works by Leonardo da Vinci, items from Captain Cook and the Great Exhibition.'

At INPEX the invention also won two gold medals (Manufacturing and Novelties/ Specialty Gifts categories) and was the overall winner of the Grand Prix Award.

INPEX is America's largest trade show and inventors conference. The 'Squeezeopen' was the only British entry from over 1,000 other inventions shown.

Frustrated with the age-old complaint about problems opening containers currently available, Mark developed the



new design of packaging closure.

'Consumers either have problems because the screw top lid has been put on too tight, the child proof locking system has locked or is simply too complicated. Taking a knife or scissors to the container incurs a high percentage of injuries.' In the UK alone 60,000 packaging accidents are recorded annually by A&E departments.

The Squeezeopen lid is a press snap fit on to the base of the container. All you do is simply squeeze the side of the lid and it will pop off - and only one hand is needed!

'We want to raise awareness that people with ideas should join an inventor's club to get support from people who have been there, rather than being ripped off by companies who say they will market their idea, at a price.'

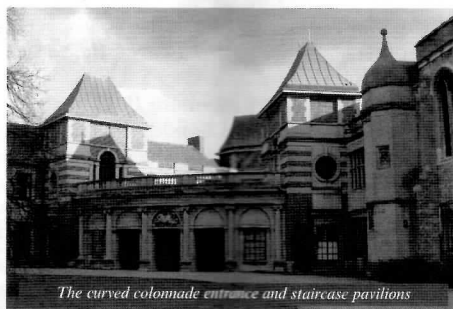
Three such Inventor's clubs are the Institute of Patentees and Inventors, the Round Table of Inventors Croydon, and Ideas21.

For more information see website www.squeezeopen.com or email mark@squeezeopen.com, or come and hear Mark at the BrocSoc AGM (details on page 1).

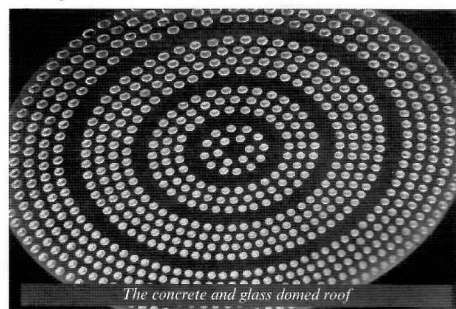
Eltham Palace and its gardens

As stately homes go, Eltham Palace has a particularly royal pedigree. Set in the midst of what used to be Kentish farmland, now leafy London suburbia, the medieval foundations were first laid in 1305. Centuries later, the Tudor gardens of Henry VIII long gone, the only structures remaining were the rampart walls, the stone bridge and the derelict Great Hall (built in the 1470s for Edward IV) ignominiously used as a storage barn by agricultural tenants up until the 1930s.

Then Steven Courtauld, the philanthropic textile magnate, was granted a Crown Lease on the site. After demolishing an unremarkable Regency dwelling, he and his eccentric wife Virginia built a neo-Gothic Art Deco fantasy that incorporated the historic hall — which became their grandest reception room. For the interiors they enlisted the best of contemporary designers and the effect is still stunning.



The curved colonnade entrance and staircase pavilions



The concrete and glass domed roof

Pictures: Ian Hibbert

In and around the ruins the formally laid-out gardens owed perhaps more to the previously popular Arts and Crafts genre. The massive rockery, complete with waterfall, slopes steeply down from a sinuously curving upper lawn to the moat below. At the foot of the south rampart lies the magnificent Long Border featuring a mix of familiar perennials and more exotic species. Around the corner the sunken rose garden is overlooked by a bronze statue of victorious St George set in a niche. The paths beckon the visitor onwards to the contemplative garden rooms beyond.

Continuous bombing raids by the Luftwaffe persuaded the couple to leave the residence where they had entertained so lavishly, in 1944 to resettle in Scotland. Many of the older Eltham villagers remember Major and Mrs Courtauld contributing greatly to the war effort in the area. The estate's gardening staff alone numbered eleven, kept busy growing vegetables.

Nowadays English Heritage has to manage with a skeleton crew of directly employed gardeners, aided by horticultural contractors who maintain the vast expanse of lawns. Amazingly, as much as 55 per cent of the work is done by volunteers, dedicated to the continuing restoration of the palace's splendour.

English Heritage information on Eltham Palace: 020 8294 2548. Details of corporate or private hire: 020 8294 2577 (birthday parties and wedding receptions are quite popular).

Linda

Salsa and sarsaparilla in the sun

Sun hats and parasols were out in force for this year's midsummer fayre on Hilly Fields - and plenty of warm smiles too.

Colour everywhere, not least around Donna Maria's maypole. The princess of Colour, Sweet Pea, Little Rosebud (aged 3) and the rest of the rainbow troupe charmed the crowd with traditional entertainment. Then we were transported through time and half-way around the world to see the swivels and spins of the salsa dancers.

You could restore lost energy with a choice bite from the locally famous BrocSoc barbecue or a sizzling Thai kebab or a dollop of spicy Caribbean chicken with a glass of sarsaparilla! Any remaining gaps could be satisfyingly filled by a French pastry or a slice of cake (but not just any old cake; a home-made masterpiece in the form of a large carrot, a monkey, or even a swimming pool).

Of course it was very different back in 1943. Then, according to the man from IMPS (the Invicta Military Vehicle Preservation Society), American soldiers were likely to be dining on reconstituted powdered cheese or ham and eggs, washed down with orangeade. His army jeep and tent, photographic paraphernalia and MASH-style accessories created quite a stir with the children (young and not so young).

If your interests lay more with the animal kingdom, you could meet the regal shire horses, with their glossy coats and bright red trimmings, surrounded by adoring youngsters (some of whom seemed to have developed a particular fascination about the production of manure!)

Well, you might not have been able to buy a jeep or a horse but you could purchase just about anything else: seascapes and landscapes by local artists, strawberry and coconut scented candles, hand-made slippers in a range of colours to match any one of Donna Maria's outfits. Even the cactus enthusiast was catered for.

So everyone, no matter their age, shape, size or creed, seemed to go home happy, the children bouncing elasticated balloons and waving their hard-won wiggly worms in the summer sun.

Veronica

Thanks to Fayre sponsors: Saxtons & Co. Estate agents, Oak Estates, Mr Lawrence Wine Bar, Jones and Viridi, Lewisham Shopping Centre, Rocodells Estate Agents, Acorn Estate Agents, Mason's Restaurant, Babur Brasserie, Rivoli Ballroom, Lewisham College.



Pictures: Veronica Davis

Brockley Max next year

After the highly successful Brockley Max music and arts festival which took place this summer, the organisers have turned their thoughts to making it bigger and better for next year and beyond.

At the first post-festival meeting in August over 30 people turned up to offer their dreams and ideas in a brainstorming session. The aims of the first Brockley Max were supported: namely, to allow more people to see and hear the work of Brockley artists; to enable Brockley artists to meet and see each other's work; to enable artists who can't open their 'studios' to exhibit their work; to encourage the creative talents of our community, and to connect Brockley businesses to the artist community.

Ideas for the timing of the event, content and venues were discussed and already a website is in development to promote Brockley Max. What is needed now is support and commitment from the Brockley community. If you would like to be part of next year's Brockley Max, email Moira on chriswoods@easynet.co.uk to be added to the email list.

Loss of a cherry tree

On Wednesday 11 June 2003 the 35 to 40-year-old flowering cherry tree outside 120 Tressillian Road was cut down after one of its main branches fell crashing on to the pavement and part of the road during high winds the previous day. (No one was hurt though the Give Way sign was knocked from its post.)

The tree had been damaged the previous winter. During high winds a small crack had appeared at the junction of the main trunk and a large branch. Although it was reported to the council at that time they did not attend to it then when they could have trimmed the tree back and prolonged its life.

Now I have found out that in order to get the tree replaced I have to write to the council to request a replacement (which I have done).

Is this what it means to live in a conservation area?

Jacqueline

Showcase of Brockley Talent you could be involved!

Talented local musician and member of Brockley Drummers Chris Hurn is keen to put together a showcase of Brockley's musical and artistic/theatrical talent in the spring 2004. He's keen to hear from musicians, poets, actors, mime artists, comedians, visual artists, etc.

He would also like to hear from you if you could help out with a venue or a PA system, or if your talents lie in stage design or marketing/publicity.

For more information, or to offer to help, please contact him directly at chris_hurn@hotmail.com

Can you help deliver this newsletter?

If you are interested in delivering Brockley Society newsletters three times a year to the following street numbers please call

Sue 0208 694 8144

37-55 ODD & 54-70 Wickham Rd
(80 newsletters)

110-154 Upper Brockley Road
(30 newsletters)

62-108 EVEN's Upper Brockley Rd
(45 newsletters)

All of Glensdale Rd
(30 newsletters)

www.brockley.com/brocroc
Our Website

BROCKLEY SOCIETY NEWSLETTER comes out three times a year: end of February, beginning of June, end of October. Events, articles, pictures and co-editors are welcome! Copy deadlines: 1 February, 1 May, 1 October. email to c.cowen@btinternet.com or ring Clare 020 8692 3829.

HILLY FIELDS

Hilly Fields has so much to offer the people of Brockley, who use it for a whole number of activities. The playground is popular. Hilly Fields children's football club appear en masse every Saturday. The Francis Drake Bowling Club (founded 1906) welcomes new members aged 18 and upwards. The tennis courts are widely used. People meet for picnics and informal gatherings at the Stone Circle. And of course it hosts the Midsummer Fayre each year, the monthly Farmers' Market and much more in addition to its regular enjoyment by walkers and dogs.

If anyone wants to start a tennis or cricket club - or anything else - contact chair Peter Byrne. If you have ideas, BrocSoc's charitable status may enable us to raise funds to help.

Minutes of Hilly Fields Park User Group Meeting - 30 September 2003. Present: Andrew Harper (chair)AH, Paul Fointette (Glendale) PF, Trottie Kirwan TK, Val Berry VB, Len Thorpe LT, Simon Knightswood SK, Alison Stone AS, Joseph Cullen JC, Rachel Mooney RM

Park User Conference 27/09/03: AH and TK attended. Glendale presented the vision on the next seven years of their contract, AH stressed that they were taking people's comments seriously. Lewisham were putting in a bid for a greenwaste composter. Possible sites were Brockley Cemetery and Northbrook Park. Martin Hyde of Lewisham explained Open Space Strategy for Hilly Fields Park. Trees: Many of the newly planted trees had died over the dry summer. These will be replanted this planting season, between November and February. TK reminded PF that the Oak paid for by the Brockley Society had not been planted and should be planted this planting season. Several old dead trees near Vicars Hill were never picked up in the survey and nothing has been done with them. PF to contact Harry Walker (Lewisham Arboricultural Officer) to see about tree pruning. Ongoing problems with epicormic growth on limes on Adelaide Avenue collecting litter. **Toilets:** The checking/cleaning system had not been working. PF confirmed that bins and secure loo roll dispensers were now installed. PF confirmed that an electrician had been contacted to discuss resolving lighting problems, but he had cancelled meeting. AH also to attend rescheduled meeting. PF stated that cleaner had only been going in once a week; now changed to three times a week. VB suggested that a checklist was installed to be ticked off on each cleaning visit. It was suggested that operatives who open and lock the toilets also check them and report any problems. **Play Area:** Excess bark chip now removed. PF to investigate a thicker grain sand for sandpit that may be less prone to blowing away. Wickstead had sent through a missing top to a post on the play ground equipment and AH replaced it. Double Gates into playground to have hole in ground for spindle put in correct position so that gates could be shut properly.

Fencing/Barriers/Gates: Wooden fence between ornamental garden and bowling green and chainlink fencing on Vicars Hill to be repaired or replaced as part of a 3-month maintenance programme from November to March. RM queried whether it could be replaced with a more appropriate park fencing. PF explained that the budgets

Bat Walk

On a warm summer evening in August, Mark Andrews, with a bat expert and his bat detector, led a group of 20 around Hilly Fields to look for bats. He gave a fascinating talk. Bats can live for up to 20 years and eat 1,000 insects a night! There has been a steep decline in bats in London, and he was not sure why. We didn't locate any bats on this occasion, but may do next time. For info on bats visit www.londonbats.org.uk/index.htm. For more events about wildlife in Brockley visit www.brockleywildlife.homestead.com

The Farmers Market takes place on Hilly Fields on the second Saturday of each month.

'There will be a seasonal theme, with Xmas trees on sale and more hot food on 13 December,' market organiser Chris Elder told us. 'We are even hoping to have a stall selling turkey with stuffing and a sausage in a bun, plus chestnuts and other seasonal fare. We regularly have a good selection of wheat- and gluten-free breads,' he continued.

'The Hilly Fields market has been surprisingly successful and really is a community event.'

- Join BrocSoc between 11am and 1pm on 13 December for some fun and games.

limited the replacement to chainlink. It was reported that one of the upright posts is missing by Ermine Road on Vicars Hill. PF confirmed that the fence up to the first barrier on Eastern Road is Glendale's responsibility. AH requested a pedestrian barrier at the bottom of the Tressillian Road entrance following a request from a local parent. Speeding cars are a problem on Eastern Road. PF agreed to keep the barrier on Eastern Road locked for a trial period and to monitor. There is already a notice of the times the gate will be opened. Late night traffic thought to be involved with drug dealing. Residents consider most problems occur between 10pm and midnight. **Planting:** PF confirmed that dead shrubs in bed at Montague Avenue would be replaced. PF thought the shrub bed around toilet block needed reviewing. VB wanted to confirm that the daffodils on the bank on the cricket field were correctly marked on the plan to avoid a repeat of their being mown before flowering. AH noted that the meadow had been planted with some perennials this year, that had been successful prior to the hot dry weather. **Benches:** Bench on Eastern Road close to houses attracts anti-social late-night behaviour, disturbing residents. PF agreed to move bench half way up the hill. **Funding:** RM has researched numerous funding sources. Initially want to locate funding to produce a masterplan so that there is a framework for the park's development. If this was in place, for example, the replacement of fencing could be coordinated, and maybe contribute towards match funding, enabling a higher quality fence than chainlink. RM will compile a list of possible funding sources and try and circulate it prior to the next meeting. **AOB:** SK wanted to know what has happened to the wildlife reserve and what plans were there for its future management. It was noted that the grass had been cut even though it had not needed cutting. The maintenance ought to be more flexible and another task should have been undertaken in place of grass cutting. Martin Hyde is to send through the Greenspace Strategy for Lewisham.

Next meeting: 7.30pm, 9 December 2003, St Peter's Church, Cranfield Road, SE4. All welcome. For more information contact Andrew at harpstrings@tesco.net or 07958 585809.

PLANNING APPLICATIONS

June - September 2003

Prendergast School, Hilly Fields, Adelaide Avenue.
Demolition of the lavatory block to the front of the school and the construction of a two storey building to provide a music school building. - Granted

Garage at rear of, 17 Wickham Road.
Conservation Area Consent for the demolition of existing workshop building at the rear of Colin Blanchard House, 11-17 Wickham Road - Granted

Workshop at rear of Colin Blanchard House, 17 Wickham Road.
Construction of 1 one bedroom and 1 two bedroom houses incorporating terraces at first floor level on the site of the existing workshop - Granted

13 Chalsey Road.
Alteration and conversion into 2, two bedroom, self-contained flats, together with the construction of a single storey extension to the side and alterations to the rear elevation - Granted

51 Wickham Road.
Installation of 2 Velux windows in side roofslope in connection with the conversion of part of the roofspace at second floor level to provide additional living accommodation. - Granted

19 Crescent Way.
Lawful Development Certificate in respect of the construction of a single storey extension and conservatory to the rear to provide additional living space - Granted

38a St. Margarets Road.
Construction of a single storey extension to the rear of the ground floor flat - Granted

186 Lewisham Way.
Listed Building Consent for the removal of existing ceilings at first floor level and replacement with replicas - Granted

38 Chalsey Road.
Construction of a single storey extension to the rear and dormer extension in the rear roofslope together with the installation of a Velux type window in the front roofslope in connection with alterations to provide additional living accommodation. - Granted

Awaiting decisions.

161 Upper Brockley Road.
Construction of a garage to the side

11 The Parade, Upper Brockley Road.
Alteration and conversion of the basement to provide a 2 bedroom self contained flat.

24 Geoffrey Road.
Alterations and conversion of the lower ground and the upper ground floors to provide 1 two-bedroom and 1 one-bedroom self contained flats, together with the construction of an extension to the rear to provide additional living space.

96 Tressillian Road.
Demolition of garages and the construction of a two-bedroom coach house with an integral garage to the rear.

79b, Adelaide Avenue.
Fell three Lime trees and reduce by 60% a further four Lime trees, all at 1 Edwards Way, Adelaide Avenue.

116a, Upper Brockley Road.
Retention of timber decking to the rear garden together with the retention of trellis to existing fence at the rear.

3 Upper Brockley Road.
Fell a Walnut tree in the rear garden.

Spring front garden competition

No expertise needed, just enthusiasm!
For many years we ran a front garden competition, judged by Roger and Norman from Darling Road until they had to give it up. They walked the whole Conservation Area over a week and chose interesting gardens and window boxes for a judge from Lewisham Parks Department to make the final selection for three prizes in each of the two categories: Best Front Garden and Best Window Box Display. In 1999 and 2000 Camilla ran the competition again.

We would like to start again! We need two or more people to choose interesting innovative, different, cared-for front gardens in late April or early May for judging by an outside impartial specialist (prize-giving at the Fayre on 20 June).

If you would like the job, please contact Peter Byrne at 102 Tyrwhitt Road, tel: 020 8692 5027.

Gillian

Buses and Brockley

On Wednesday 10 September, the Toads Mouth Too was packed to hear a talk by Andrew Boag, from Transport for London (TfL) about proposals for improving London Buses. He fielded many questions about problems and suggested improvements. Our local bus - the 484 - was a source of much concern:

- It still frequently comes in threes,
- the bus drivers smash into parked cars,
- it is too crowded and is following the wrong route!

Many residents of Harefield Road would prefer the bus to go along Brockley and Wickham Roads, to avoid the steep, narrow section of Harefield; no other vehicle can pass when the bus goes along. Andrew said that he would look into this, and saw no reason why our suggestion should not be put into practice.

We do now have several bus shelters in Brockley along the 484 route.

We also badly need a direct bus service to Deptford. There are several schools in Deptford, but no direct bus from Ladywell, Brockley or Telegraph Hill.

How could bus journeys be speeded up? Get rid of people buying tickets on the bus, of course. From January, all buses in central London will be ticket and passholders only. The new, smart 'Oystercard' will enable passengers to pay for any journey just by passing it over a sensor. It can be charged up, like a mobile phone, and will always use the cheapest fares - if you make several journeys you will never have to pay more than the cost of a bus pass or travelcard. It will be used on buses, DLR, tube, and eventually the railways. Don't forget that local bus fares paid for in cash go up to £1 next January, but remain at 70p if you pay in advance, for example with a carnet of tickets for bus or tube.

Peter MacDonald reported on a successful campaign for a new bus stop in Lewisham way opposite Malpas Rd - the existing ones were too far apart. Do you know of anywhere else which could do with a bus stop? Contact TfL with your suggestions. A bus stop is badly needed near Tyrwhitt Rd on the Brockley side. We at BroeSoc are supposed to be informed by TfL, and Lewisham council of any transport proposals and consultations affecting our area, so we will keep you informed.

Brockley Badminton Club

Thursday evenings (8-10pm)

St John's Church (in the upstairs hall)
on Lewisham Way

Adults (mixed)

*Experienced players only
No complete beginners please*

Charge to cover hall hire, shuttlecocks & refreshments (£7/evening or £20/month)

Brockley/Harefield junction accident

Following the tragic death of 18-year-old Henry Bartlett at this most dangerous junction Michele Henare of Toads Mouth Too has started a petition (and has already collected over 1300 signatures) campaigning for something to be done. Please sign.

Why is this crossing so dangerous? There are no traffic lights, islands or any other measures for pedestrians. The nearest crossing is further down Brockley Road past the Brockley Barge. But people prefer to take the most direct route rather than a detour and coming down Harefield Rd cross directly into Coulgate St.

In 15 minutes I counted 53 people crossing this junction, many having to run across or stand in the middle of the road. People getting off the 171 bus who want to go to Brockley Station cross here. There are many reasons why a suitable crossing is needed here, including the nearby schools (the UK has one of the worst rates of child pedestrian casualties in Europe). It is on the cycling route. The 484 Bus has to turn right here - often with great difficulty.

So what can be done? A proper survey of traffic and pedestrians crossing during morning and evening peak times needs to be done. Lewisham council have already been challenged by local businesses and Brockley Cross Action Group to view the state of the junction. Money may be tight, but what price can you put on a life? What traffic calming measures can be put in place to prevent cars racing at over 50 mph down Brockley Road? Speed cameras certainly, as well as cameras at traffic lights We must reclaim the streets and pavements for people, not cars.

Tyrwhitt Road speeding

As a resident of Tyrwhitt Road, I am becoming increasingly concerned at drivers using this road as a high-speed rat-run. As most of the surrounding roads have traffic calming measures, they seem to use Tyrwhitt Road as a rare chance to really get some speed going. Many children live on Tyrwhitt Road and like to play - however, they take their lives in their hands just crossing the road sometimes.

I've witnessed cars zooming at 60-70mph down the road at 3.40pm - just as the school kids are returning from school - and I also saw a blind man with learning disabilities narrowly avoid being ploughed down.

We do need restrictions! There are traffic calming measures available that would not impede the emergency services.

Steve

Stop Press: Steve has contacted Joan Ruddock MP and Lewisham Council, who will put speed indicators on Tyrwhitt Road in late November or early January - with a view to calming measures in autumn/winter 2004. At first the signs will just monitor speeds (covers-on) and later the covers will be removed to alert drivers by flashing up speeds to make them aware if they are speeding. This will measure what effect the signs have.

URBAN GARDEN RESCUE

Rain or shine, everything in the garden just keeps on growing - including the brambles, bindweed, docks and ground elder. Let me help to weed them out before the frosts arrive.

Hedges clipped and lawns edged neatly

Only £7.50 per hour

Free assessment and references if required

Don't despair, call LINDA on

020 8691 2973

Shardeloes Road Poem

The poem is written by Margaret Reynolds
and was constructed by James Salisbury and Tom Young.

It was a project done with money from the Brockley Cross Action Group
but also became part of Brockley Max.

Lewisham Council also played a very helpful role throughout the project.

**THE SYDNEY FISHER
CLINIC
REGISTERED OSTEOPATHS**

Osteopathy can help a variety of acute and long-term problems including:
lower back and neck pain; headaches and migraines; whiplash injuries; sports injuries; arthritis and rheumatism.

It can also be effective in helping pregnant mothers, babies and children. Appointments six days per week and some evenings until 7pm.

Both male and female practitioners are available.

For more details or advice please contact us at

81 Tressillian Road 020 8694 2714



CATS @ HOME

Is a cat-sitting service and we need another cat sitter to help us with our busy round.

The person would need to

- ♦ Be deeply dippy about cats
- ♦ Have their own car
- ♦ Be reliable, trustworthy and able to provide good references

FULL TRAINING WOULD BE GIVEN

It probably wouldn't suit someone with school-age children, as our busiest times tend to be at weekends and school holidays.

Telephone Carole Leonard 8692 0023



**Aromatherapy
Deep Tissue Massage**

Sue Thomas (TEC MGCP AOC Reg)

New Cross Natural Therapy Centre
Tel: 020 8469 0858

& Honor Oak Tel: 020 8699 0287

*Over 12yrs Experience. Back, Neck & Shoulder Pain.
Anxiety, Tension & Stress. Relaxing & Revitalising*

KUMON MATHS & ENGLISH

After school classes held on

Monday 16.15 - 18.15 &

Wednesday 16.15 - 18.00

At St Cyprians Hall

Braxfield Road, Brockley



Contact Min Carter on 020 8291 2190

John Lewis

PIANO LESSONS

*Children & Adults
Beginners Welcome*

JAZZ & CLASSICAL

Teacher in local schools for many years

Call 020 8692 2350

Singing Lessons

Experienced professional singer/teacher

(Mmus; Dip(Teacher) - Royal College of Music)

*Now accepting students
of all ages and stages*

Call: 020 8699 8060

Mobile: 07790 017165

ADVERTISEMENTS

Small	3.6cm x 6cm	£15
Medium	7.5cm x 6cm	£25
Large	12.4cm x 7.6cm	£40

All ads must be prepaid

CIRCULATION 4000

READERSHIP 8000

to advertise, phone 07092 173263

Rocodells



**Estate &
Lettings Agents**

**388 Brockley Road, Brockley,
London SE4 2BY**

020 8691 8731/0313

Call now for free valuation

Safe Personal Care Products!

If you care for your health and that of your family read on

Many personal care and household products often contain ingredients that may be unsafe. There is now a new way that you can protect yourself and your family.

Neways is a company that specialises in creating products that are the safest possible.

The products include skin and hair care, cosmetics, food supplements, household cleaning, automotive, baby and child care range and more.

***Safe for you, gentle on the environment and
no products are tested on animals***

*For a mail order catalogue and to find out more
send £1.50 (refundable with first order) to:*

A. Davies, 28 Old Brompton Road, Suite 244, London, SW7 3DL
quoting reference BSN/AB01

Telephone (07092) 005658

or log on to my website at: www.neways.co.uk/AllisonDavies

Neways Independent Distributor

Spalding and Sparrow Newsagents

Bus passes and travel cards, confectionery, greeting cards, ATM service and paypoint for domestic bills also Western Union Money Transfer and Instant Passport Photos Congestion Charge Payment

Open: 6.00am - 7pm Mon - Fri
6.30am - 6pm Sat
6.30am - 2pm Sun

61 Loampit Hill, SE13
Tel: 020 8473 2688

Qi Gong

The Chinese Art of Health and Fitness

The Art House
140 Lewisham Way
(near Rokeby Road)
New Cross

Tuesday 7.30pm - 9.00pm

Taught by Charlie
a student of Zhixing and Zhendi Wang

For further details call

020 8691 0447

All Welcome

Pay what you can afford £1 - £4.50

*Qi Gong involves movement and static postures
to improve health and fitness.
Bring loose clothing and flat soled shoes.*

Simon Woolf B.A. (Music); Dip. O.S.

offers tuition on

Piano & Double Bass

Jazz & Classical

from music or by ear

Beginners Welcome

020 8691 7516

Art Classes for Adults

*Complete Beginners to Experienced
Children from 10 years to CGSE & A Level*

All Classes are small and run in day & evening



Contact: **Anne 020 8692 8804**
email: msalynch@freeuk.com www.annelynch.com

Five Element Acupuncture
an ancient form of healing for a modern world

ACUPUNCTURE CAN HELP WITH A VARIETY OF PHYSICAL, EMOTIONAL AND STRESS RELATED CONDITIONS, AND PROMOTES GENERAL WELL-BEING AND VITALITY

Eileen Reynolds 020 8691 8548

Practice in Ladywell

Dynamic Yoga
Therapeutic & Deep-Tissue
'No-Hands' Massage
Holistic Clinical Aromatherapy



Michelle Walder, BA(Hons) MIFPA
t: 07950 399073
e: yoga_aroma@hotmail.com

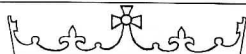
CLEANING SERVICE

All housework undertaken,
Weekly, fortnightly, etc.
Spring cleans, one-offs, ironing
Saturdays can be arranged.
Refs. provided.
Phone **020 8318 6421**
07956 589 394

MGC Secretarial Services

Word-processing - Letters, CVs,
Forms, Projects, Theses, Accounts,
Fax Service, Photocopying, Binding,
Laminating, Passport Photos,
Small Volume Printing.

Tel: 020 8469 0634 Fax: 020 8469 0639
353a Brockley Rd, SE4 2AG



SAXTON & Co.
ESTATE AGENTS & VALUERS

ESTATE AGENTS & VALUERS
369 Brockley Road
Crofton Park, SE4 2AG
40 yards from Crofton Park Station
Telephone 020 8691 1516

Singing Lessons

Experienced Professional Singer & Teacher
Mimus - Performance & Dip RCM (Teacher)
Royal College of Music

Now accepting students of all ages and stages
Children and Adults welcome
Brockley/Honor Oak Park

☎ 020 8699 8060



MASONS
BAR RESTAURANT

38 LADYWELL ROAD
LONDON SE13 7UZ

TELEPHONE 020 8314 0314

Neil Fennel D.O. M.I.C.O. Itcc
Leandra Cole BA (Hons) PGCE Itcc

BROCKLEY NATURAL HEALTH CENTRE

Aromatherapy + Palmistry
Women's Health & Wellbeing
Bodywork + Cranial Osteopathy
Reflexology + Lifestyle Awareness
Craniosacral Therapy
Classical Osteopathy

* Free Assessment *

RELAX DETOX RESTORE

"Professionails"

☎ 020 8691 1051

193 BROCKLEY ROAD LONDON SE4 2RS

please mention this advert when contacting us

*Professionails
&
Tanning*

Nail Extensions
Freehand Nail Art

Sunbeds

Su-Do Tanning

Nail Products

☎ **020 8692 3073**

Now Open

*Discounts available
with this voucher*

C.J.'s Property Maintenance & Repairs .

Builder, Carpenter, Painting & Decorating, Restoration work - Home Improvements
Comprehensive Fitted Kitchen Services. Landscape Gardening, Walls, Fencing, Patios,
Paths & Ponds etc. Exterior painting and repointing, Insurance work undertaken

Please ring Colin Brooks for free advice & estimates on

020 8695 6234

HONOR OAK GALLERY

1st November - 29th November

'Cats' a new collection of etchings by

Elizabeth Blackadder

Opening times Tues - Fri 9.30 - 6.00 Saturday - 9.30 - 5.00

52 Honor Oak Park, London SE23 1DY
(020) 8291 6094

Christmas Exhibition

Starts 6th December

LOCAL CARPENTER

31 YEARS EXPERIENCE.

*Doors Supplied & Fitted
at Competitive Prices*

Doors, locks, kitchens and flatpacks,
windows, partition walls, period
restoration and traditional built
cupboards, wardrobes & bookcases.
Also heating engineer, plumbing &
decorating. CORGI registered,
no call out fee

All work guaranteed
Free estimates. Call Len
020 8425 1901 / 07976 579 721
No job too big or too small!

Psychotherapy

Victoria Gater

Crofton Park

020 8690 2859

to arrange an initial consultation

PROPERTIES TO RENT

1st Class Flats & Houses In
S.E. & S.W. London.

Friendly Reliable Service



DESIMAN LIMITED
RESIDENTIAL PROPERTY INVESTMENT & LETTINGS

Tel: 020 8691 2400

Fax: 020 8691 2428

VISIT OUR WEBSITE
www.desiman.co.uk



The Gardening Doctor
Garden Design & Maintenance

Dr Jim Kelly BSc MSc PhD MInstP CPhys (Director)
130 Breakspears Road
Brockley
London SE4 1UA

T: 020 8305 6571
M: 07745 448137

E: jim@thegardeningdoctor.co.uk
www.thegardeningdoctor.co.uk

The YMCA are happy to have
9% Lower Gas Heating Bills

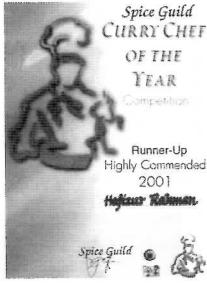
*after fitting ECOFLOW (r.r.p. £50)
(the world's favorite fuel conditioner)
which improves combustion using less gas*

Neil Fennel 020 8691 1051
ecoflow.co.uk

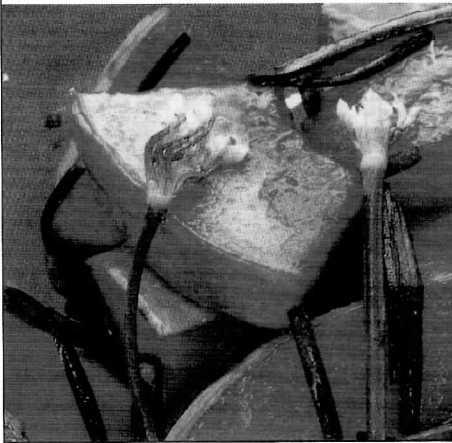
A la Carte Authentic Indian Cuisine
with an Exotic Novae Twist

Cinnamon

'My professional skills lie in the balancing and blending of spices, and this is what I want to share with you at home. Taste the real Indian food, delivered to your home'. Bon Appetite...
Chef Hafizur Rahman



Free Home Delivery
020 8694 1010
10 The Parade Upper Brockley Road SE4



Taste of India



Exclusive Special Offer

15% Discount On Collection
on order over £10

FREE HOME DELIVERY
Free Bottle Of Wine
on order over £25

Free Papadom & Onion Salad
With Every Order Takeaway Only

Now you can pay by credit card or switch over the telephone.

OPENING HOURS

Sunday to Thursday 5.30pm until 11.30pm Friday and Saturday 5.30pm until 12 Midnight

OPEN SEVEN DAYS A WEEK

171 BROCKLEY ROAD, LONDON SE4 2RS TEL 020 8469 0999 / 8469 3954



Outdoor
Catering
for
Parties
Undertaken

BOOK
YOUR
XMAS MEAL
WITH US
AND GET A
15% DISCOUNT



Rosie Riley

PLUMBER

Handywoman

20 Years Experience

Tel: 020 8692 3375

Mobile: 07932 566 039

FREE ESTIMATES

Brockley Park Cars

M.O.T. Centre

(Free Re-tests)

Sales ✓ Servicing ✓ Repairs ✓ Bodywork
Engine & ABS ✓ Diagnostics ✓ Tracking

Open Monday - Friday 8.30am - 5.30pm Saturday 9am - 3pm

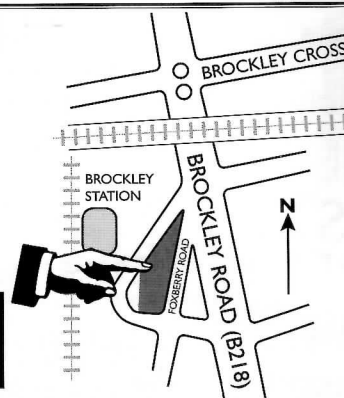
Saturday
MOT Special
All MOT's
Only £30

with this advert

Brockley Park Cars

180 Brockley Road
Brockley
London
SE4 3RR

020 8691 7666



Saturday
ONLY
MOT Special
£30

with this advert
First come first served



Full Dealer Finance Facilities Available

Please mention this advert when contacting us

