

BROCKLEY SOCIETY



Issue 90 November 2000
Charity No: 1004245

Delivered free to 4 000 households

Brockley Society and Hillyfielders Football Club

Christmas Party

with Magical Entertainer



Admission £1 for children (adults and under-threes free) includes:

Games 3-3.45pm

squash & biscuits

Magic Show 4.15-5pm

Children must be accompanied by an adult

Raffle
Face painting
Mulled Wine
mince pies

This is entertainment for adults too!

Come and marvel at the magic tricks while you sip wine and munch mince pies!

Sunday
19 November 3-5pm

St Peter's Hall

Cranfield Road SE4



Brockley Society AGM

Tuesday 21 November 8pm
St Peter's Hall, Cranfield Road
with wine and nibbles

Come and participate in shaping BrocSoc for the coming year. As always, BrocSoc continues to evolve and needs new people to come on board. We need volunteers for small amounts of time. We need ideas. We need a secretary! We need contributors on the newsletter team. . . Come and find out if there is some way you could participate.

Help! BrocSoc Fayre in danger of closing!
We need people to organise next year's Summer Fayre. See page 5. All we need is a few hours a month until June and the commitment to do some running around on the day, scheduled for Saturday 23 June. The situation is at crisis point: **NO TEAM, NO FAYRE!** If you think you can help, ring Annette on 020 8691 3318 or come to the AGM.

THANKS

to the volunteers who distribute the newsletter in Brockley. We couldn't operate without them, and this time they are our main way of publicising the AGM and our Christmas Party.

Broc Soc Meeting

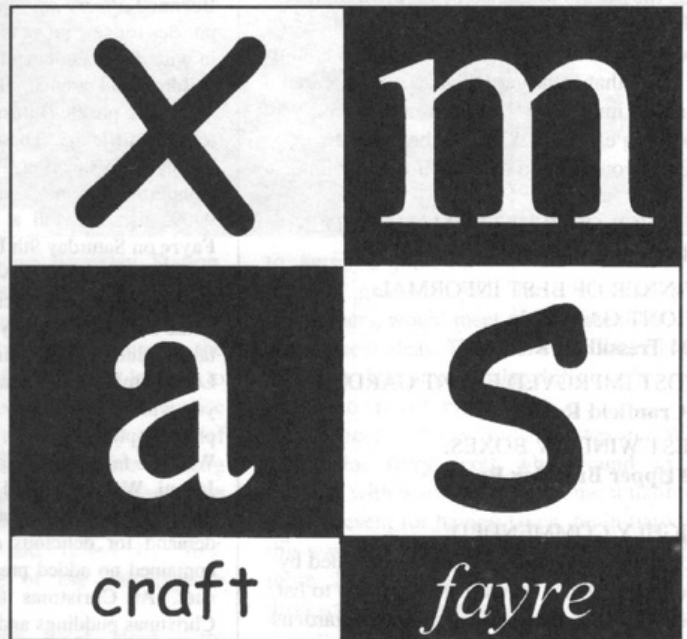
Wednesday 10 January 8pm St. Peter's Centre

Jayne Confino will talk about her fascinating trek to Peru on the Inca trail to the lost city of Machu Picchu to raise funds for The Children's Society. Business items will follow.

If you would like to go

CAROL SINGING

round the doors, in aid of homeless charities on **MONDAY 18 DECEMBER** meet at **7pm**, corner Harefield and Tressillian Roads. Please bring your children! Mince pies and mulled wine afterwards in St Peter's Centre.



BROCKLEY SOCIETY

Saturday 9th December
12 noon - 5pm **Entrance 50p!**

Lewisham Arthouse
140 Lewisham Way, New Cross, SE14.

Fine quality handmade crafts.

Teas and Refreshments

Nearest tube/train: New Cross, Buses: 21, 36, 321.

Further information or to book a stall: 020 8691 3318

High hopes for Brockley Cross – see page 3



BROCKLEY SOCIETY

Chair	8694 1476
Vice-Chair	8691 1463
Fayres outside stalls	8692 0772
" stalls in marquee	8692 0772
" advertising	8691 3318
Newsletter	8692 3829
Newsletter Distribution	8691 1463
Police Liaison	8692 6977
Transport	8691 1463
Local History	8692 6977
Environment and Hilly	
Fields Park Users Group	8691 7234
Planning & Highways	8692 6977

The Brockley Society welcomes all – regardless of race, religion, gender, sexual orientation or physical disability

WINNERS OF BROCKLEY IN BLOOM 2000

This year's judges reported an encouraging overall



improvement in the upkeep of Brockley's front gardens. Often, it didn't matter if there weren't any flowers or shrubs in evidence. It was the efforts to get rid of rubbish, replace concrete wildernesses with grass or other more creative coverings and a general attempt to show that front garden spaces were cared for, that impressed the judges more than anything else. The £25 Phoebes Garden Centre vouchers go to the following winners:

WINNER OF BEST FORMAL GARDEN:
58a Tyrwhitt Road

WINNER OF BEST INFORMAL
FRONT GARDEN:
104 Tressillian Road

MOST IMPROVED FRONT GARDEN:
2 Cranfield Road

BEST WINDOW BOXES:
70 Upper Brockley Road

HIGHLY COMMENDED:

So many front gardens were commended by the judges that it would be impossible to list them all here. However, here are the gardens that fell into the Highly Commended category:

ADDRESS CATEGORY

95a Cranfield Road Informal

75 Tressillian Road Informal

130 Breakspears Road Informal

15 Montague Avenue Informal

9 Chalsey Road Informal

44 Geoffrey Road Informal

46 Geoffrey Road Informal

34 Chalsey Road Formal

13 Beverley Court Formal

120 Upper Brockley Road Formal

4 Harefield Road Formal

29 Harefield Road Formal

132 Breakspears Road Most Improved

134 Breakspears Road Most Improved

75 Tressillian Road Most Improved

83 Manor Avenue Most Improved

50 Geoffrey Road Most Improved

2 Cranfield Road Most Improved

1 Darling Road Window Boxes/
Hanging Baskets

66 Tressillian Road Window Boxes/
Hanging Baskets

9 Montague Avenue Window
Boxes/Hanging Baskets

Thanks to the judges; Bridget Ward, Mr and Mrs Duffey and Camilla Berens for their hard work. Thanks also to everyone who has helped make Brockley a more attractive place to live including the local authority gardeners who maintain the flowerbeds on Lewisham Way, the Wickham Arms for its hanging baskets and Myatt Fields School for its imaginative borders around the playgrounds.

Christmas Shopping

You may go to Bluewater or Bromley to do your Christmas shopping but there are alternatives right on our doorstep. There are some fantastic local shops and craftspeople right here in Brockley that you drive past every day that offer a personal service no shopping mall can match.

Bernard Pierre has been making metal magic puzzles for several years in Brockley, specialising in wire disentanglement puzzles. His stalls attract children and adults, like bees to honey. Pierre makes the puzzles himself, rating them according to their difficulty. These puzzles are well made, and go from stocking filler size upwards, making wonderful presents. You can order direct, tel 8694 9909, visit his stall at **Brockley Society Craft Fayre** on Saturday 9th December or visit his stall at Greenwich Market every Saturday and Sunday. You can meet other local artists and craftspeople at the **Brockley Society Craft Fayre**, which will take place again in the Arthouse. 140 Lewisham Way, on Saturday 9th December, where you will be able to buy ceramics, scarves, prints, photographs, jewellery, etchings, and..... Jacqui Walker's fabulous Christmas puddings.

Jacqui Walker started her business, **Organic Cakes Direct**, 6 years ago, realising there was a demand for delicious cakes and puddings that contained no added preservatives and no nuts or suet. At Christmas time she specialises in Christmas puddings and rum cakes, both made to a secret Caribbean recipe handed down over five generations, with the addition of Jamaican Appleton special rum – a taste to die for!! The puddings come in two sizes and are presented in a porcelain bowl and gift-wrapped. Last year I bought one of Jacqui's puddings to appease my father for not continuing our family tradition and was completely hooked! I can't recommend it highly enough. Contact Organic Cakes Direct on 7732 0388 or visit the website:

www.organiccakesdirect.co.uk

Nicki Fiander, the florist at 7-9 Brockley Cross, is not just a florist. If you walk around the corner you will find they have another shop, full of gifts, candles and vases. The shop is closed but they will happily open it for you if you want to browse around – just ask at the florist shop. The florist shop itself sells hand painted Christmas cards nearer Christmas, and also makes beautiful Christmas wreaths and garlands. Phone: 8694 8989.

Slightly further afield, **Abigail's** in Forest Hill is a shop you may have just glimpsed approaching the traffic lights. It is a small gift shop, stuffed to the ceiling with cards, china, boxes, jewellery, Neals Yard products, odds and ends, and small toys – the kind adults like to buy but are loath to give away. 5 Davids Rd, SE23, 8699 3405.

Also in Forest Hill, I have just come across a shop I have never noticed before, although it has been there for over 2 years. **Moneybox** is a small shop, but a gem if you like traditional toys, from babies' wooden toys to dolls' houses and the dolls and furniture; but my favourite is a fabulous box of wooden blocks that make up a castle. It also sells a few "toys" for bigger boys – little gadgets for men! 16 Dartmouth Rd, Forest Hill, SE23. Phone: 8699 7747.

Nearer to Brockley, there is the **Honor Oak Gallery**, selling "20th Century works of art on paper," that also specialises in the conservation and restoration of watercolours, drawings, prints, paintings and frames, and is highly regarded by those in the know, but often missed by those dri-

ving past. 52 Honor Oak Park 8291 6094.

Moving in the opposite direction is the new **Gallery Stark**, 384 Lee High Rd. Split into two sections, one half is a gift shop selling beautiful hand made soap from Aaron, prints, jewellery, ceramics, cushions, cards, paper, etc. – hand made and including work by local craftspeople. The other section is a gallery which displays monthly exhibitions of paintings and modern glass. Andrew Stark, who owns the gallery, strongly believes in supporting artists and doesn't take the large commissions charged by other galleries in the centre of London, preferring to make high quality modern art affordable to all. Unintimidating, it is a wonderful gallery to browse in, and I notice several secondary school children come in regularly in their lunch hour to look at the exhibitions.

With the artists in the studios above the gallery, Stark is part of the first **Lee Open Studios** in which local Lee artists will be opening their studios for the weekend 25-26 November. (Artists interested in taking part should telephone 07801 240 621). Pick up a map on the day from the gallery. For more information on the gallery or the open studios, contact Andrew on 8318 4040.

Sadly, another shop, Dragon's Den on Brockley Road has just closed down, having struggled to survive. Dora and Tom Couch's unusual gift shop will be missed by those who enjoyed having the full gear for line dancing at the Rivoli Ballroom; we wish them well. Without local trade, these small one-off businesses are finding it increasingly hard to continue, as people travel to larger shopping centres to shop.

Stocking Filler!

Long after the Dome is lost in memory our Hilly Fields Stone Circle will remain as a sundial and gathering place for local people.

Brockley Society has published a full-colour 20-page booklet – *Millennium Stone Circle on Hilly Fields*, ISBN 0-9538480-0-0, £2.50 – both as a record and to raise the outstanding costs of its installation.

The book contains:

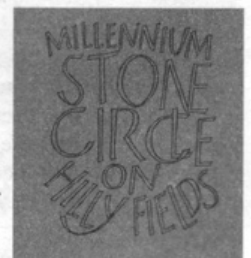
The history of Hilly Fields – Stone circles – The story of the Millennium

Stone Circle on Hilly Fields – The geology of the stones – Lettering in stone – St Norbert's Gate – Season, equinox, solstice and latitude – Sundials – How to use the Hilly Fields stone circle as an analemmatic sundial.

Why not buy copies of the booklet for rather special Xmas presents?

It is available at: Sunrise Ceramics, 218 Algernon Road, SE13; Spalding & Sparrow Newsagents, 61 Loampit Hill, (bottom of Tyrwhitt Road); John's corner shop, 158 Lewisham Way (by the War Memorial); Mr Lawrence Wine Bar, 389 Brockley Road, SE4.

Special price of £2 at the Xmas Craft Fayre or our AGM.



High Hopes for Brockley Cross

Brockley Cross Action Group

On the evening of Monday 18 September an unprecedented meeting of residents of the Brockley Cross end of town took place in St George's Church, Foxberry Road. The meeting, called "Action for Brockley Cross", was organised by Stuart Woodin, a housing and community regeneration consultant and local resident, with support from Lewisham Council and the Brockley Society. It was designed to collect ideas from local people about how the area could be improved, and to assess whether there was any support for a dedicated Brockley Cross Action Group to lobby Lewisham Council and produce solutions to the problems the area faces.

Around 80 people responded to the organisers' leaflets and turned up despite heavy rain. Before the meeting and during the break the Brockley Drummers entertained those present, and tea and biscuits were sold to help recoup the cost of the meeting. Two Lewisham ward councillors were present, as were members of the Met Police, including the Inspector with responsibility for Brockley. Unfortunately only one local trader attended. It was also noted that the attendance at the meeting, being overwhelmingly white and middle-class, did not properly reflect the composition of the area; and that efforts should be made to make future meetings more representative.

Despite this a lively discussion ensued, with people being encouraged to contribute their views about what the specific problems were that affect Brockley Cross, and what the solutions might be. These views were written down on notes which were pinned to boards for later collection by the organisers, and at the end of the meeting those present were able to vote on the most pressing issues by placing stickers on the notes. People were also asked to write down what Brockley meant to them, and the results of this exercise were on the whole encouraging. Despite its difficulties Brockley obviously commands a great deal of loyalty and affection!

Among the issues that were raised were: the state of the pavements and road surfaces; traffic flow and speeding; double parking;



Photos: Per Turnberg

general untidiness around Brockley Station, including pigeon mess under the railway bridge; nuisance or even violent neighbours; poor public transport and crowding at the station; the profusion of take-aways leading to litter; and drug-related crime. The police pointed out that they were already aware of many of the crime issues, and were tackling these through the local police consultative group. Someone reminded the meeting that the local burglary rate had fallen by 90% following the closure of the Breakspare Arms.

A range of genuine good ideas were suggested:

- re-opening of the old Brockley Bridge station on the Victoria-Lewisham line;
- re-opening of Vesta Road to through traffic;
- CCTV and better signposting at the station;
- improved lighting around the station and in nearby streets;
- the planting of trees along Brockley Road and a general clean-up;
- the introduction of short-term and residents' parking, and traffic calming measures;
- more beat officers;
- a facelift for the station when the East London tube line comes through if not before;
- local authority support for new high quality businesses.

On a less serious note someone suggested that the only way to get anything done was to forcibly walk Lewisham councillors around the district so they could see its condition for themselves! Generally, however, the tone of the meeting was very up-beat: the emphasis was less on whingeing about problems and more on addressing them through a renewed sense of community.

Aside from the good spirit that was engendered there were two positive outcomes from the meeting. Firstly it was unanimously agreed that there should be a dedicated Brockley Cross Action Group. Fifteen public-spirited individuals with diverse expertise and interests put their names forward and were elected without dissent. It was agreed that the Group would meet monthly to put together concrete proposals for action to deal with directly, or to put to the Council. It was agreed that one of its first actions would be to approach the Connex Passengers Lobby Group

to agree a joint strategy. In addition, the broader group of all those present, plus newcomers, would meet every three months to feed in new ideas. Those from the wider group with free time or particular skills to offer were invited to come forward.

The second positive outcome was that Ward Councillor Terry Scott, who wound up the meeting with warm words of congratulation to those present for having taken the initiative in this way, said that Lewisham Council would be more than willing to listen to any concrete proposals the Group could put forward. There was even a possibility that new money could be committed to realising good regenerative ideas, drawn from the Single Regeneration Budget funding allocated to Lewisham for New Cross.

Warwick Hawkins

The next public meeting for the Brockley Cross Action Group will be held on Wednesday 5th February 2001. No venue has been fixed as yet but everyone who attended the first meeting will receive an invitation and all local streets will be leafleted prior to the meeting.

For further information: Tel 8694 2828 (evenings only) or write to: Brockley Cross Action Group c/o 66 Geoffrey Rd., London SE4 INT



The Brockley Barge is launched!

As the newsletter went to press, the former Breakspare Arms on the Brockley Road was about to start pulling pints for the first time in six years.

Camilla Berens, the winner of a joint competition between the Brockley Society and Wetherspoons brewery to find a name for the new pub, will be cutting the ribbon at the opening ceremony on October 18th. 'I thought The Brockley Barge was a good name for the new pub as the building is shaped like a barge - at least a double-decker one!' Camilla told us. She added: 'The name also links the pub with Brockley's past as there used to be a canal where the London to Brighton railway now runs through Brockley station.'



Lifeline Expedition

A journey of reconciliation down the meridian line

You may have read in the March newsletter about this expedition. The English section of the walk from Hull to Peacehaven was completed in July. The idea came from Brockley resident David Pott and is supported by the Jubilee 2000 coalition.

Marguerite Diarra came from Mali to participate in this section and has been in Brockley since, preparing the next stage. The aim of the expedition is to share with people the message of reconciliation.

'During the English march we had participation by many school children and we had the chance to share with them the importance of reconciliation, of living in harmony and in peace with others,' Marguerite told the newsletter. 'We had representatives from England, Martinique, Togo, Ghana, and Burkina Faso. We were also joined by an Algerian who was very excited to see something like this taking place.'

'At each point we had the opportunity to explain what we were doing: people understood and supported it. A high point for me was the end at Peacehaven with an official reception to light the meridian beacon. The flame's light seemed to be chasing away the historical darkness, bringing joy and comfort. It seemed to be a sign that something had just begun: this light penetrated the shadows and replaced all the years of sorrow and misunderstanding.'

The next stage will be in France which is very important in the whole issue of reconciliation. 'Our project is not yet understood there,' continued Marguerite. We are going to talk to people there, share the project, make better preparations and get more involvement of French people. We need to do the same in Spain.'

The Algerian government is very supportive and is prepared to protect the expedition as it travels through Algeria, including the journey by Landrover across the Sahara desert to Mali.

'In all the West African meridian countries there is support. People hope that from this expedition something important will follow. We end in Ghana where they are helping to organise the conclusion. The idea was to continue the expedition this year but we have realised it was a big project, needing more preparation and more participants.'



With pupils from New Addington school

'We didn't have all the financial support we had hoped for from supporters, churches and other bodies, and the Landrover wasn't available in time. We also had no participants from France except Monette, who is actually from Martinique in the Caribbean,' said Marguerite. 'This was very important in relation to reconciliation: we needed a white representative to par-



Richard Shaw

Marguerite Diarra from Mali

ticipate with humility of heart, to say sorry on behalf of France for what was done in the past. 'Only saying sorry can heal the wounds of the past and liberate people from the anger and resentment that they still feel against the former colonial powers along the meridian: Britain France and Spain,' Marguerite concluded.

The Jubilee 2000 Lifeline walk took place in England between 14 June and 12 July. During the 250-mile journey from the North Sea near Hull to Peacehaven on the English Channel, they shared a jubilee message of reconciliation and urged people to support the campaign to release the poorest countries in the world from debt repayments. They shared their message with 1,700 schoolchildren many of whom walked with the team as they passed their school. A petition was delivered to the office of Clare Short, Minister for Overseas Development, and there were civic receptions and interviews for local press and radio. Funds were raised for literacy projects in the African meridian nations.

The plan for the rest of the expedition is as follows:

- Walk along zero meridian in France
- Continue expedition to Spain
- Northern Algeria
- Landrover trek across the Sahara to Mali (Gao)
- Burkina Faso
- North West Togo
- Northern Ghana
- Southern Togo
- Ghana from Volta Lake to Tema
- Concluding events

When Marguerite flew in from the Sahara it was distinctly cool and there were three occasions when we got a good soaking! Soon after she arrived on 21 June, it was evident that she was not well. Twice in that week we took her to the doctors, who said it was a virus and needed paracetamol and plenty of liquids. On 28 June she collapsed in agony in the minibus and was driven straight to hospital in Huntingdon. Malaria was diagnosed and she remained there for a week. We were so relieved that she made a good recovery and was able to walk near the end, but it was a very hard thing, not only for her, but also for the rest of us, who were so excited about her being with us. It helped us to identify with the kind of suffering that is commonplace in Africa, only now it was not thousands of miles away. ☺

David Pott

For more information:

David Pott, 58 Geoffrey Road, SE4 or email: fountaingate@nsm.co.uk

A day at the stones

21 June 2000

Summer Solstice of the New Millennium

A few days earlier I had discussions with a friend over whether to do something for the longest day. Phil mentioned the stones at Ladywell. We arranged to get up there before sunrise at approximately 4.45am. I was the first to arrive which meant I experienced the quiet solitude and contemplation which most people seem to appreciate in a stone circle.

Others joined us including Phil and her friend and just before sunrise the twelfth person arrived for the 12 stones. We saw a very brief but stunning sunrise before it took its warm glow behind the clouds.

Much conversation took place between the people there. We asked what the world most needed in the next 1,000 years. Three people said love, three people said peace, one person understanding, one care, one a clean environment, another belief, another, compassion and last but not least balance. These statements were spontaneous and spoken from the heart and I consider them to be noble truths at the stones, something that is deep down in all of us, that touches our core, like the stones did of old – the original language of our species.

Later in the day, at about 2.30pm, I took a late lunch break and went to sit in the stones circle. This was a mixture of contemplation and discussion with those who entered the circle over why it was erected here, the equinox significance and the gateway (maybe the gateway of reflection).

Later I went back to see the sun go down on the longest day, which you couldn't see because of cloud cover. There were people playing African drums and sharing food and once again twelve people – other than myself, all different from the morning.

Once again a quiet time and very friendly discussion took place. Meet again regularly to come together next time late evening on 8 July 2000 (old solstice).



My reflections on the day are that a visit to the stones gives you an opportunity to reflect on your own life, how this is integral in the vast space we call time; that for some reason people are much more friendly in the circle than out of it; that it touches a deeper, historic part of our inner self, and that our species has always used stones in several ways.

My own view is that many myths and legends surround stone circles and it's our destiny to continue this process. The sacred words spoken from the heart of what people want the world to be in the future is the same as what has always been said. It's like I am the scribe of the first summer solstice at the new stones – may this tradition continue.

Michael Perry

Midsummer Fun 2000 and 2001

Were you at the millennium midsummer fayre? Did you enjoy the entertainment and find bargains to take home with you? Personally I very much liked the look of the vigorously executed salsa dancing (though have to confess I've yet to enrol for classes). Weren't those dancers an inspiration? And I always enjoy Monson Primary School steel band, who once again filled the air with strains of Caribbean melodies. Mind you, the music had to compete with squeals of delight from the children enjoying a ride on the "petit train" and others bouncing high on the giant inflatable.

Filling the air too were wafts of freshly cooked food, including some rather enticing Jamaican goodies and tempting doughnuts. And once you were well fed there was plenty to entertain. If you didn't have the courage to join in the salsa dancing you could at least enjoy the spectacle of a whole cross-section of the community, aged 5 to over 50, who were a little more forward at displaying their Latino talents. And there was some beautifully rehearsed children's dancing, too. With children in tow you could climb aboard a real fire engine and sound the siren or try your hand at that perennial favourite, the coconut shy. For those with dogs there was an opportunity to show off your pet's waggly tail, wet nose or bounding enthusiasm. (And if you didn't have a dog why not dress up as one anyway?) Alternatively, you could make use of a rare opportunity to inflict your double-jointed knobby knees on a surprisingly appreciative public audience. Or simply enter the prize draw competition and cross your fingers.

As for the shopping, there was everything from bric-a-brac to antique furniture, nesting boxes to mock snakeskin shoes. Something for us all.

We hope to see everyone back at Hilly Fields next June. But a special plea for much-needed volunteers to help organise the event. (It's a great way to meet your neighbours and feel you're doing something worthwhile for the community). Our very best wishes for the future to Annette.

Veronica

Thanks for sponsorship to:

Saxton's Estates, Mr. Lawrence Wine Bar, Freedom Direct, Rocodell's, Oak Estates, Lewisham Shopping Centre

Thanks also to **the Fire Brigade and St. John Ambulance** and to **Martin Whitby and John Taylor** for stepping in to the PA at the last moment.

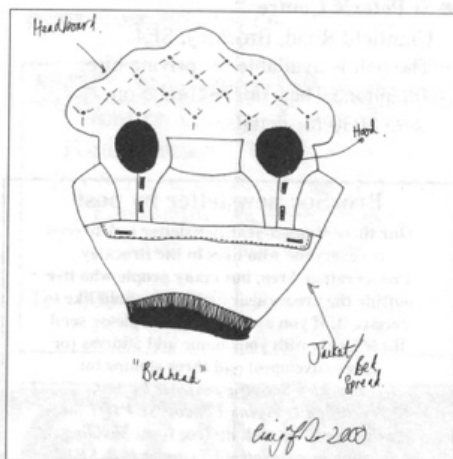


Goldsmiths Saatchi Fine Art Fellow Seeks Brockley Studio

The Saatchi Fellowship for Fine Art MA graduates at Goldsmiths College has been awarded to Brockley's Craig Fisher.

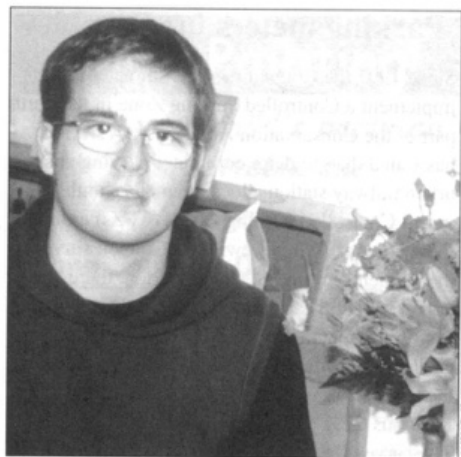
This means he has won £10,000 which will enable him to get a studio and continue developing his artistic practice for the next year. Originally from Liverpool, Craig got a first in his BA from Northumbria University before coming to Goldsmiths. Craig described what the prize means to him:

'As the Saatchi fellow, part of my role will be to develop a dialogue with the new MA students and answer their queries about the course. It's an amazing opportunity – it's really exciting to be able to maintain a critical dialogue with other students.'



'It's also good not to have the financial burden. It means I can give up my part-time retail job doing visuals in a high street store.' All full- and part-time MA students were eligible for the prize, which has been running only two years.

Art collector Charles Saatchi gives £10,000 to



Richard Shaw

Craig Fisher

each of the four major art colleges: The Slade, The Royal College of Art, Goldsmiths and Chelsea, who then award the fellowship. Goldsmiths staff nominated six people, who come from as far afield as New Zealand, Atlanta and Germany.

'We all had to write a proposal and then Brian Falconbridge, head of visual art, awarded the prize,' said Craig.

Craig considers himself a sculptor. 'I make sculptures using fabric. A lot of my work is made with a sewing machine and I draw inspiration from fashion and everyday objects around me. I play with the domestic. I combine cloth and objects to make strange and perverse things: somehow comforting because you recognise them, yet they are completely ambiguous. They exist in the imagination because they are not real, functional objects.'

- The next chance to see Craig's work will be at the VTO Gallery in Bethnal Green, in January.

- Craig is looking for a studio in the Brockley area. Email any suggestions to:

craigfisher23@hotmail.com

The Fayre in the Future

Some fantastic people have stepped forward to organise sections of the summer fayre for many years – and a BIG thank you goes out to them! – Trottie Kirwin organises the marquee stalls, and with her husband, Tony, plus Bob & Lindsey Hayes, runs the BBQ on the day. Penny Rapak, and a small army of helpers, runs the tea stall, having coerced everyone to bake for the day. Olwen and David Perrit set up the coconut shy and kindly store it all away in-between fayres. Sandra Giorgetti has handled the application forms, the council, safety issues, and persuaded the fire brigade and St John Ambulance to turn up, amongst many other things.

Last year Gill Rayson volunteered to book the marquee and all the tables and chairs, and continued this year, getting up at an unearthly hour on the day to make sure it is all put up in the right place. This year, Dee joined us and booked in the outdoor stallholders, and Imogen Bishop organised the arena events. And many other people, like Jayne and Daniel Confino, happily come on the day to run the coconut shy for an hour or run the

Brockley Society stall, or whatever is required. For the last three years I have been involved, mainly with getting food stalls and rides to come on the day, and persuading advertisers to stump up for the programme, and sponsor the marquee and steel band. We all get together over a drink to sort out any problems but it is much more of a social occasion than a meeting. Now I am about to move to Germany – not a drastic measure to get away from the job, I promise – however, it is just a little too far to get involved with next year's fayre!

Sadly, Sandra Giorgetti is also unable to continue next year so we need new volunteers to become involved. You don't have to take on a huge amount, just as much or little as you want. Any time given will be gratefully received! The general idea is that everyone takes on a small task so that no one feels burdened with the responsibility for the whole event! As it has been running for many years there are notes to help, but any new ideas and suggestions are welcomed. If you are interested in joining in, telephone me on 8691 3318.

Annette

Parking meters for Brockley

Since 1997 the Council has been threatening to implement a Controlled Parking Zone in the north part of the Conservation Area. The government has stated that, to deter commuter parking at suburban railway stations, local councils should install Controlled Parking Zones (CPZs) around these stations. When Lewisham Council surveyed the residents around St. Johns station, there was not a problem near the station (trains not stopping at St. Johns), but there was and is a problem caused by Lewisham College students, mainly on the south of Lewisham Way. So they called it The St. Johns CPZ.

The survey the Brockley Society did in June 1997 found that ten people out of 106 replies wanted a CPZ in their area: three in Breakspears Road, three in Tressillian Road and four in Wickham Road. The results of the 1997 council survey showed slightly higher "Yes" answers than our survey.

Since then the double yellow lines have been painted, as requested by us, but not enforced, (we are told that they won't be, until there is a CPZ and the parking wardens are around here), and another survey was done by the Council in the summer of 1999.

We had information sent to us last Christmas and had heard nothing until we wrote in May this year.

We wanted to see the results of the latest survey and to discuss the hours of working, visitors parking, and which roads this CPZ would cover. We asked for a public meeting so that everyone could put their points and hear the answers. We were offered at very short notice, a meeting with the new head of highways, Colin Chick, councillors and some officers.

At this meeting we were told that the CPZ would go ahead, and a further survey would be done a year later. They would not give us the statistics of the results of the 1999 survey, although we know that such figures must be made publicly available. How are we to know what percentage of respondents in each road want a CPZ? How are we to know which roads were surveyed? Surely a democratic decision cannot be made without the facts on which it is based being known. Why was this decision not made by a council committee? We were told that the CPZ will operate in Tressillian Road from Lewisham Way to Darling Road and Breakspears Road to the railway bridge. There will be a few parking meters in each road near Lewisham Way. We argued that the lower end of Tyrwhitt Road has more residents' cars than the space available and there is very little commuter parking, so a CPZ here would only anger residents if they pay the £25 and still cannot park within 100 yards of home. What we did discuss at the meeting was times of operation which will now be from 9a.m. till 7p.m. so that college students will be fined if they park in the CPZ in the daytime. We also tried, to no avail, to change the rules for visitors. As it stands, a resident will be able to buy visitors tickets, up to 100 per year, at a cost of £2 per ticket which will be valid for half a day, not transferable. Nurses, health visitors home helps, builders, window cleaners etc., have to have visitors tickets or be fined. How can a pensioner needing care afford this outrageous demand? In at least two other areas of Lewisham, the

What's On

Sorry! This page is missing! Tina, who used to gather the items to put on this page, has had to stop. Thank you Tina, particularly for your thoughtful choice of unusual and less well publicised events, as well as your broad contribution to the newsletter. Would anyone like to take this on?

◆ www.brockley.com.

Visit Brockley's own website!

◆ **Brockley Society newsletter** comes out three times a year: end of February, beginning of June, end of October. Events, articles and pictures are welcome! Copy deadline is one month before: 1 February, 1 May, 1 October. Ring Clare (8694 3829) or Camilla (8469 0814)

◆ **St Peter's Centre**

Cranfield Road, Brockley, SE4.
The hall is available for private hire.
Telephone Theresa Ancombe on 8693 8030 for details.

BrocSoc newsletter by post

Our three-times-a-year newsletter is delivered to everyone who lives in the Brockley Conservation Area, but many people who live outside the area – near and far – would like to receive it. If you are one of them, please send three labels with your name and address (or three envelopes) and three stamps to:

*Brockley Society newsletter by post,
17 Tressillian Crescent, London SE4 1QJ for a year's supply, or pick up free from Spalding & Sparrow newsgents, 61 Loampit Hill, SE13*

council installed a CPZ on a trial basis and although the residents have campaigned and still are campaigning to have it removed, it has been made permanent. They would rather have the inconvenience of not being able to park near their homes some of the time, than the problems a CPZ causes.

We know that there is a big problem in a small part of some of our roads, but are also concerned that the council is not approaching it properly. We do not think that Wickham Road and Manor Avenue have been consulted and we think that there are problems there. Is a CPZ the solution? If so, is it targeted at the right area? Is there more that Lewisham College can do to alleviate the problem? The car park is never full in the evenings, when students can use it. Will users of the college be allowed parking permits and so negate any good that a CPZ could do? If a CPZ is implemented how long will it be until the whole of the area becomes one large CPZ with the council raking in the money? Why have we heard nothing since July from the Highways Department, not even an acknowledgement of the meeting or the statistics which they finally agreed to send us?

We still think that we need a public meeting. There are many other questions unanswered, no doubt you have your own. Would a survey done now, by Brockley Society, help to clarify matters? We would like to hear your views and comments so that we can formulate a strategy. Please contact us on 8692 6977 or 8691 3318. Meanwhile the Council is silent. Gillian

PLANNING APPLICATIONS

June – October 2000

- 7 Beverley Court** Retrospective application for retention of a garden boundary wall.
Front of 150 Lewisham Way Retention of a free standing advertisement display sign.
Flat J, 25 Wickham Road Infilling of existing window and installation of a roof light.
14 Wickham Road Conversion to two self contained houses.
17 Tressillian Crescent Retention of a summer house in the rear garden.
281 Brockley Road Retention of a lean-to extension to the front of the office building and the retention of two water storage tanks on the roof.
St. Johns Railway Station Conservation Area consent for alterations to entrance, platforms, canopy and footbridge.
1 Friendly Street Construction of a three storey block for three 2-bed flats.
1 Friendly Street Construction of two storey block for two 2-bed flats.
45 Manor Avenue Construction of a 1.8m. high wall to the side boundary of the rear garden.
R/o 2-12 Cranfield Road Site of garages/works demolition of 3 Harefield Mews and construction of 3, two bed detached houses, with work space at basement level, together with 4 car spaces with access onto Harefield Mews.
Land to the side of 5 Harefield Road Construction of a terrace of three two storey plus roof space one-bed houses with integral garages, fronting onto Harefield Mews.
Breakspears Arms Display of floodlit, non-illuminated lettering "Henry Williamson", fascia and other signs
Breakspears Arms Display of floodlit, non-illuminated lettering "Brockley Barge", fascia and other signs
26 Cranfield Road Installation of 2 Velux roof lights in the front roof slope.
32 Wickham Road Retention of a 2.6m. high fence on the boundary with 30 Wickham Road.
60 Wickham Road Deletion of condition re parking, and use as 6 2-bed and 1 bed sit flat, with inadequate parking.
R/o 45 Manor Avenue Construction of 2 semi detached houses with garages.
14 Hilly Fields Crescent Alterations to the side and rear elevations and provision of an access ramp.
41 Wickham Road Conversion of existing flats to a different configuration.
41 Wickham Road Construction of 2 semi detached houses in the rear garden.
3a-5 Harefield Road Change of use from a plumbers', merchant to an Organic Food Restaurant.
143 Breakspears Road Construction of a timber staircase and balcony area to the rear.
95 Tyrwhitt Road Construction of a conservatory at the rear.
101 Tyrwhitt Road Construction of a conservatory at the rear and a shed in the garden.
39 Wickham Road The construction of a replacement garage at the rear.
18 Tremaine Close Construction of a single storey rear extension.
178 Lewisham Way Listed building consent for re-roofing and exterior painting.

TREES

13 Wickham Gardens
9 Crescent Way
33b, 41, 69, 80, 127 Tressillian Road
45c, 53 Wickham Road
1 Montague Avenue
45c Wickham Road
1 Glensdale Road
89, 100, 101, 102 Tyrwhitt Road
53, 108, 142 Upper Brockley Road
6 Avon Road
101, 127, 144 Breakspears Road
10 St. Margaret's Road
71 Harefield Road
8 Manor Avenue



BOOK SALE

intellectual husband forced to sell lifetime book collection by would-be house-proud wife

Sunday 12th November 10-1 and 2-4 at
Minster House 14 Darling Road 8692 6977
Penguins, Pelicans, New Naturalists,
Olympia Press and other erotica.

THE SUMMER GARDEN

Garden Design & Maintenance
By qualified Horticulturist

Caroline
020 8690 6061

J.W. Nannies

Employment agency
260 Streatham Rd, SW16 6NY: 8677 5477
191 Waller Rd, SE14 5LX: 7732 0388
email: JWNANNIES@HOTMAIL.COM
A personal service & reasonable fees
For you and your family's childcare needs
Do you need a Nanny or Mother's Help?

WE OFFER:

- a personal family consultancy visit
- a wide variety of personnel
- all applicants interviewed in person
- references, police and health checks undertaken in full
- assistance with employment and payroll issues

To arrange a visit or make further enquiries please phone 8677-5477 or 7732-0388

Face Painting!

Make your child's party an unforgettable one.

Prices from £50

Phone Polly on 020 8299 9513

PC Headaches??

Technical Support offered by friendly, down-to-earth, plain-speaking local expert.

Software & hardware upgrades, problem solving, software advice, Internet and email set-up, web-page design, etc. all at affordable hourly rate (sorry, no MACs).

Further details contact:

Eamonn Marshall

020 8469 0823

mail: pchelper@lineone.net

ADVERTISEMENTS

Small	3.6cm x 6cm	£15
Medium	7.5cm x 6cm	£25
Large	12.4cm x 7.6cm	£40

All ads must be prepaid

CIRCULATION 4000

READERSHIP 8000

to advertise, phone 020 8691 3318

MGC Secretarial Services

Word-processing - Letters, CVs,
Forms, Projects, Thesis, Accounts.
Fax Service, Photocopying, Binding,
Laminating, Passport Photos,
Small Volume Printing.

Tel: 020 8469 0634 Fax: 020 8469 0639
353a Brockley Rd, SE4 2AG

GALLERY STARK

384 - 386 LEE HIGH ROAD, LEE GREEN,
LEWISHAM, SE12 8RW. 0208 318 4040

14 October - 14 November

Wilma Helfer

Abstract ink drawings

14 November - 13 December

Simon Ripley

Abstract monoprints

25 - 26 November

Lee Open Studios

Ceramics, jewellery, painting

13 - 31 December

Matt Mahlen

Satirical cartoons

13 - 31 December

Terry Watts Airbrush,

abstract, & landscape

New contemporary gallery and craft shop open Tuesdays to Sundays

CLEANING SERVICE

All housework undertaken,
Weekly, fortnightly, etc.
Spring cleans, one-offs, ironing
Saturdays can be arranged.
Refs. Provided.

Phone 020 8265 1387 /
0956 589 394

Flat for Rent

Spacious, unusual, three bedroom
flat in conservation area available
to rent from February 2001. Top
floor, split level, lovely views..

020 8691 3318

The Brockley Festival

continues to go from strength to strength – after last season's record audience numbers, the winter season got off to a strong start this year. Thomas Guthrie, who is now touring as a soloist with John Eliot Gardiner, teamed up with experienced pianist Paul Plummer to give a delightful programme. Their theme was "Flora and Fauna", so we heard songs about birds, beasts and flowers, from a range of composers, including Schumann, Schubert and Poulenc. The concert was rounded off with a rousing number by Aaron Copland which brought a smile to everyone's face. Early deadlines mean that we cannot tell you about how wonderful the concerts by Sinéad Pratschke, Paul Plummer and local husband and wife team

Joseph Cullen and Sara Egan were, but those of you who were there will know! This is the perfect thing to lift your spirits on a Wednesday night. The concerts are of a very high standard but informal – you don't have to know anything about music to come along, and the performers always present their programmes and talk about what they have chosen. All the artists are local professionals, and all the concerts are free. Lewisham Shopping Centre generously contributed towards the expenses for this series, and we hope to attract more local support in the future. The spring season of the Brockley festival begins on April 18th – please come along, support the events, and enjoy some top quality music in a friendly, welcoming atmosphere.

Summer Fayre Winners



Sarah Hathwaite was the lucky winner of the first prize in the draw sponsored by Saxton Estate Agents.

This prize-winning cake showing the Stone Circle was made by six-year-olds Martha Perotto-Wills and Jasmine Schofield.



BOOK SALE

Would-be house proud wife announcing sale of hundreds of husband's books in order to have space to live

Sunday 12th November 10-1 and 2-4
at Minster House 14 Darling Road
8692 6977

Books on most subjects, but no childrens books.

Neil Fennell D.O. MICO Classical Osteopath (Reg.)

Holistic 50 minute sessions £27
including cranial & reiki healing.

Professionails 3a Coulgate Street
020 8691 1051

Organic Cakes Direct

Organic cakes, desserts & puddings

Caribbean Christmas Puddings

Suet & nut FREE, suitable for vegetarians
Beautifully presented.

Ideal Xmas present

£13.50/900g (2pts)

£9.50/450g (1pt)

Discount for early orders!!

tel 0207732 0388 or email:

organiccakesdirect@hotmail.com

For full product list visit us at

www.organiccakesdirect.co.uk



ESTATE AGENTS & VALUERS

369 Brockley Road

Crofton Park, SE4 2AG

40 yards from Crofton Park Station

Telephone 020 8691 1516

THE SYDNEY FISHER CLINIC REGISTERED OSTEOPATHS

Osteopathy can help a variety of acute and long-term problems including:
lower back and neck pain; headaches and migraines; whiplash injuries; sports injuries; arthritis and rheumatism.

It can also be effective in helping pregnant mothers, babies and children. Appointments six days per week and some evenings until 7pm.

Both male and female practitioners are available.

For more details or advice please contact us at

81 Tressillian Road 020 8694 2714

COUNSELLING & PSYCHOTHERAPY

A fully professional service
By an experienced therapist

Andrea Clough

Dip.Couns, Dip.Psychotherapy,
U.K.C.P. Accredited

020 8691 5303

Brockley SE4

Rocodells



Estate &
Lettings Agents

388 Brockley Road, Brockley,
London SE4 2BY

020 8691 8731/0313

Call now for free valuation

C.J.'s Property Maintenance & Repairs .

Builder, Carpenter, Painting & Decorating, Restoration work - Home Improvements

Landscape Gardening, Walls, Fencing, Patios, Paths & Ponds etc.

Exterior painting and repointing, Insurance work undertaken

Please ring Colin Brooks for free advice & estimates on

020 8695 6234



Aromatherapy
Massage
Reflexology, Reiki
Indian Head Massage

tel/fax 020 8305 6865

email:Helena Arguelles

@compuserve.com

- Gift vouchers available
- Appointments in Brockley

LOCAL CARPENTER

28 years experience.

Apprenticeship trained.

Doors, locks, kitchens and flatpaks, windows, laminated floors, period restoration and traditional built cupboards, wardrobes & bookcases. Also heating engineer, plumbing & decorating. CORGI registered, no call out fee

All work guaranteed.

Free estimates. Call Len

020 8244 5838 / 0976 579 721

No job too big or too small!

EASTWOOD GARDEN SERVICES

Designs, consultations, construction restorations, maintenance.

For your year 2000 garden changes call:

020 8858 6541

Jane Bishop LCPH.
MCHE. MHMA

Homeopathic Practitioner

The way to natural health with homeopathy, one of the fastest growing forms of alternative medicine today.

For an initial consultation please telephone Jane on

020 8694 6753

at her clinic in Upper Brockley Rd, SE4

Jane is delighted to introduce Elaine Musgrove, a QUALIFIED REFLEXOLOGIST, to the practice. Elaine will be offering treatment at the introductory rate of £15

CB DECORATING EXTERIOR PAINTING

interior decorating • all
CARPENTRY work undertaken •
free estimates •
ring Colin

020 8695 6234



SINGERS!

Achieve your full vocal potential. Excellent local singing teacher.

Elizabeth Jose

020 8692 0283

www.elizabethjose.com