

BROCKLEY SOCIETY

Issue 86 June 1999
Charity No: 1004245

Delivered free to 4 000 households



gardens controversy

p3

tune into local radio



p2

Artists' Open Studios

p4



Tressillian's street party

p4



25 years of our newsletter

p5

Climb the tower at St Peter's Open Day

p4

competitions

☆☆☆☆☆☆☆☆☆☆☆☆☆☆☆☆

Kids' Cakes, Poetry

Dog's Wettest Nose

Name the Pub

Front Gardens

BROCSOC MEETINGS

St Peter's Hall.

All meetings start at 8pm sharp.

The next meetings will be held on

Wednesday 7th July

Wednesday 8th September

Wednesday 8th December

BROCKLEY SOCIETY

Chairman	0181 694-1476
Vice-Chair	0181 691-1463
Fayres outside stalls	0181 691-3318
" stalls in marquee	0181 691-7234
" general	0181 691-0842
" advertising	0181 691-3318
Newsletter	0181 469-0814
"	0181 692-3829
'What's On'	0181 692-3829
Newsletter Distribution	0181 691-1463
Police Liaison	0181 692-6977
"	0181 691-1463
Transport	0181 691-1463
Local History	0181 692-6977
Environment and Hilly	
Fields Park Users Group	0181 691-7234
Planning & Highways	0181 692-6977

The Brockley Society welcomes all - regardless of race, religion, gender, sexual orientation or physical disability

Put it in your Diary!

Midsummer Fayre Saturday 19 June

The midsummer Fayre is your local fair – and this year it will be better than ever.

We will have all the stalls that add fun and spice to the day: bouncy castle; tug of war; knobby knees competition and for the DOGS, the WETTEST NOSE CONTEST! But here are a few more details...

In the past we have had plenty of activities for smaller children so we felt it was time to encourage the teenagers to come along. For that often neglected group, teenagers over 14, petrol GO-KARTS will be on offer. Although the karts will temporarily damage the grass we feel that this age group has been rather neglected and the grass will grow again.

If you're too young for that, you may be able to have a ride on the MODEL RAILWAY (diesel and steam) 1/11th life size.

On the music front we will have the inimitable tones of the STEEL BAND from Monson Primary School in New Cross.

The Monson School Steel Band will be one of the highlights of BrocSoc's Jubilee fair. The school has had a steel band for 10 years and it has appeared at numerous venues including The Barbican, Lewisham People's Day and

Southwark Cathedral at Christmas time.

Do you remember the fairground BUZZ BOMBS (rocket rides) made from auxiliary shell tanks on aircraft? A 1952 version will be brought to the Fayre by Terry Gibbons, a Crystal Palace blacksmith who maintains ironwork in a lot of parks and museums.

continued on page 3

25th Anniversary Social Meeting

Wednesday 7 July 8pm. St. Peter's Hall, Cranfield Road.

Four 7-minute presentations on past BrocSoc campaigns:
New housing to replace Lewisham College's Wickham Building;
Channel Tunnel link; Mews housing; Deptford Library.

If you have never been to a BrocSoc meeting before, come to this one. It's a chance to meet other Brockley residents, maintain and strengthen the community feeling that exists in our area and make your suggestions about future events.

The main activities over BrocSoc's 25-year existence have been: working to improve Brockley socially and environmentally, liaising with the council on planning, transport, local history and traffic issues and representing views of residents to the various authorities.

The current BrocSoc team (which varies from year to year) wants to build on this and is working hard to expand the social activities with particular emphasis on fun! Brockley has a rich diversity of people and we would like BrocSoc to be an organisation that reflects all our interests.

If you have ideas about what the Brockley Society should do, don't keep it to

yourself – come and participate. If you have had criticisms in the past, don't sit on the sidelines – come and make a contribution to developing it.

There will always be a need for people to take part in organising different events (like the Fayre, concerts, Christmas events) but we also want our gatherings to be where you meet people and enjoy yourself. BrocSoc's informal structure allows you to come and go, contributing as little or as much as you wish. It also provides a great opportunity to make new friends, get involved or pursue a particular passion.

NEXT MEETING

Wednesday 8 September

St. Peter's Hall, Cranfield Road

Following the success of previous local history talks, Gillian Heywood will talk about the history of St. Peter's Church in the run up to the Church's Open Day on 18 September (see inside).

New Radio Station has Roots in Brockley

South-east London's new radio station FLR 107.3FM may be based in New Cross but its roots are firmly planted in Brockley. The station, which went on air in February, is the brain-child of local businesswoman Stella Headley who has spent many hours at her flat in Tressillian Road preparing proposals for the station.

Stella first came up with the idea for a radio station that would cater for the needs and interests of south-east Londoners 13 years ago when she found herself living in a homeless person's hostel in Sydenham with a small baby. One of the few comforts she had was her radio.

"It made me realise how important the radio was to people like me who were feeling isolated and wanted to know what was going on locally," she explains. "In the end I bugged a local pirate radio station to give me a ten minute slot for music and local information and it all gradually took off from there."

But it was when Stella moved to Brockley that FLR (which stands for First Love Radio) began to take shape in earnest. In 1992, she began a drive to recruit volunteers for the station by holding a public meeting in what is now Prendergast School at the top of Hilly Fields. More than 200 people turned up and six weeks later FLR launched the first of a series of 28-day trial broadcasts from the Brockley Business Centre, just behind Brockley Cross.

By 1996, the FLR team had accumulated enough research and support to show the broadcasting authorities that there was a real demand for a community radio station that would span south-east London. But it was only in January 1998 - six years after their first trial broadcast - that FLR was told it had won a much coveted permanent licence.

Today, FLR has 18 full-time staff pro-

PLAYGROUND PLAN PICKS UP STEAM

Local children give update on bid to raise cash for a 'bigger kids' playground on Hilly Fields.

Ava, Anna, Astrid, Henry and Tom write:

Hello Brockley.

We have written lots of letters to local companies and charity organisations including the National Lottery and the Diana Memorial Trust. So far, we have been donated £500 by the Mercers' Livery Company and £500 from Lewisham Council. The Brockley Society has said it will also give us some money towards some play equipment.

It is very hard work to keep enthusiastic, as nothing seems to happen very quickly when you deal with grown-ups. We would be thrilled if other children and their parents would join us in this project. So far, suggestions for the new play area have been for rope swings, monkey bars, a skateboard ramp or a zip-slide.

Eight of us had a meeting on 4th June to discuss what kind of equipment we wanted but we would still like to hear from other kids in the area. If you want to get involved please phone: 0181 692-2350.

FLR 107.3

Don't forget: if you have any local news or non-profit making events that you'd like to publicise, contact FLR's regular events bulletin 'The Diary' by sending details to:

The Diary, FLR, PO Box 1073, London SE14 6WA or by fax on: 0181 691-9193.



Stella Headley

photos: Sharon Wallace



The Team at FLR 107.3

ducing an inspired mixture of music, local news and information services, phone-ins and local celebrity interviews.

Another well-known Brockley figure, Lewisham's current mayoress Sybil Phoenix MBE, has supported the station from the very beginning and is now its chairman. Three of FLR's DJs also live in the Brockley area.

Stella Headley admits that at times it was

hard to keep going through the early years of FLR's formation but she adds that living in Brockley played a role in boosting her morale. "Sometimes I'd be typing up reports and statistics at home for hours on end," she recalls. "But the peace and green outside my window was just what I needed to help keep me going. I'm quite proud of living in this area."

Camilla

BrocSoc Public Meeting on Road Issues

The February meeting was devoted to a broad range of road issues, including parking, traffic speeds, dangerous junctions, rat-running and heavy vehicles cutting through the conservation area.

Peter Stunnell, Director of Highway Services at Lewisham Council, addressed the meeting and highlighted the constraints within which he operates. These are a combination of scarce money and a variety of regulations. Most proposals fall foul of one or both. For instance, blocking a road is not permitted if heavy vehicles cannot turn to exit after making deliveries. The council maintains a list of priority projects based on traffic studies.

Mr Stunnell emphasised that additional central funds exist to deal with traffic accident problems. This makes it very important that all accidents are reported to the police and go into the statistics.

These special funds are available for calming measures such as road humps and width restrictors.

The only practical measure which has been considered is to restrict Harefield Road between Breakspears and Tressillian to buses only, thereby preventing East/West rat runners.

Measures already introduced with the co-operation of BrocSoc and following speed recording studies, include road humps in Tressillian and other roads and painting double yellow lines at all intersections. Local residents voted against creating a controlled parking zone which would have required parking permits. Lewisham College has made a contribution by joining BrocSoc in encouraging Connex to run an improved service to St. Johns station, including weekend trains. The college car park is now open in the evenings for the use of students.

Daniel

The Fun of the Fayre!

continued from page 1

An enthusiast for old iron and metalwork, Terry has collected numerous items including a 1920s caravan, a 48 keyless Gavioli organ (whose music is sold by the metre — work that one out!), and a 1910 Victorian portable Dobby roundabout.

One of his favourite pieces is a 1910 Chairplane. Unfortunately most councils, including Lewisham, won't allow its use, so it won't be at our Fayre, nor will Terry's 1920s rifle range with clockwork water turtles and ducks (which used to be driven by rats as they

scurried around).

However, he will be bringing **CANDY FLOSS** to the Fayre and a **STRENGTH MACHINE**. Line up all the men who want to show their muscles! He has just brought back down south the **GAVIOLI ORGAN**, still undergoing restoration, and its first ever appearance south of the Black Country will be at our Fayre!

For Terry's ironwork (security gates, railings, burglar bars, etc.) phone 0181 761-3765 or mobile 0958 564 775. **Clare**



COMPETITIONS to be judged at the Fayre:

BAKE A CAKE

Category 1: Under-8s – Category 2: 8-14s
Everyone else – bake them for the cake stall.
Lots needed!

POETRY

Write a poem about the Hilly Fields fayre. You may already have had a leaflet about this from your school. The winning entry will be printed in the next issue.

Category 1: under 7s – Category 2: 8-11s
Everyone else – you could try submitting a poem . . . no guarantee that it will be printed!

LOCAL GARDENS SOW SEEDS OF CONTROVERSY

The recent appearance of two 'designer' front gardens in Brockley is set to spark a row over planning regulations. Notices have been served by Lewisham Council's planning enforcement officer on both artist Biddu Bunzl's recently completed driftwood and wild grass front garden in Breakspears Road and the Whan family's near-completed 'railway sleeper' garden around the corner in Harefield Road. Both gardens have been designed by professional landscape gardeners.

The Council told the Newsletter that it was prompted to take action following a 'number of local complaints'. The enforcement notices only relate to the height of the fencing around each garden – both of which exceed planning regulation limits – but the families concerned feel they have been targeted because of their gardens' dramatic designs.

Gillian Heywood, chair of the Borough Conservation Advisory Panel (BCAP) – a group of Lewisham residents who oversee planning and development in the borough's conservation areas – points out that in theory, the gardens' designers should have studied the planning regulations before starting work.

However, both the Bunzls and the Whans argue that the style of fencing is part of the integral design of their gardens and to alter or remove them would destroy the overall effect. They say their gardens may be bolder than most in the area but they are not causing any inconvenience to their neighbours or passers-by.

Artist Biddu Bunzl says her exotic front garden and eye-catching jagged wooden fence took two weeks and several thousands of pounds to install. "The garden took a lot of time, energy and money," she says. "All the people we have



spoken to have told us they love it."

She adds: "There are plenty of other garden fences around here that break the regulations but they seem to be left alone."

Round the corner in Harefield Road, father of three Simon Whan believes complaints about the height of the six foot upended railway sleepers which front his new gravel and mixed grass garden were too preoccupied with the letter of the law rather than of the spirit of it.

He says he has had no objections from his immediate neighbours. "The complaints sounds like they are coming from a few people who are styling themselves as Brockley's taste police," he says.

Both families will now have to apply for planning permission to keep their fences and it is likely that the issue will be looked into by the council's planning committee. In the meantime, BCAP's Gillian Heywood is urging local residents to contact her with their views on the gardens so that she can accurately represent local feeling when the Panel is consulted.

Tell Gillian what you think by calling the planning hotline on: (0181) 692-6977.

Camilla



BROCKLEY IN BLOOM COMPETITION

Sponsored by



£100 worth of garden centre vouchers to be won.

There's never been a better excuse to get out into your front garden and wage war on the weeds. This year, the Brockley Society is relaunching its popular best front gardens competition and to cover the diversity of the area, we've split it into four categories. These are:

- 🌸 **Best formal front garden**
- 🌸 **Best informal front garden**
- 🌸 **Most improved front garden**
- 🌸 **Best window boxes and/or hanging baskets**

Everyone living in the conservation area will be automatically included in the competition but if you would like to nominate yourself or a neighbour, please call 0181 469-0814 or drop us a line at: Brockley In Bloom, PO Box 23, London SE4 1SW.

The winner of each category will be presented with a £25 voucher to spend at Phobes Garden Centre in Penderley Road, Catford. Gardens will be judged by a group of local people who will be out with their clipboards on Sunday 27th June.

Clear your garden of unwanted rubbish. Lewisham Council will remove up to 6 items of "household lumber" (mattresses, old furniture, etc.) free of charge. Call 0181 690 4366

BROCKLEY ARTISTS OPEN STUDIOS 1999



Brockley artists will open their studios to the public again in a now familiar local summer event.

Every year since 1992, up to 30 artists who live and work in the conservation area have produced a map locating their studios together with a public invitation to see what goes on behind some of Brockley's front doors.

The Art House in Lewisham Way is well known but not everybody is aware that Brockley's spacious Victorian houses make ideal studios for painters, printmakers, potters, toymakers, textile designers, photographers and sculptors.

Perhaps this is because Goldsmith's College is so near (students discover Brockley, then stay when they graduate) but probably also because of the area's unique architecture. The large front parlours and attic conversions offer ideal space for etching presses, kilns, dark-rooms and easels.

Anyone is welcome to come along to the Open Studios weekend. You can buy work directly from the artists - often at prices much lower than at galleries - or you can just browse, meet the artists and ask them about their work.

If you want a leaflet with the Open Studios map, phone Anita Klein on 0181 691-2374 or Ruth de Monchaux on 0181 692-6981.

See 'What's On' for further details of dates and times for the Open Studios weekend.

Clare

don't miss . . . don't miss . . . don't miss

Street Party and Sheep Drive

Sunday 18th July at 12 noon

As reported in our last newsletter, Brockley resident and Lewisham Freeman (or Freeperson?) Sybil Phoenix will drive her sheep over Ladywell Bridge from Hilly Fields in an event to raise funds for Marsha Phoenix House at 90-92 Tressillian Road.



After that, come and join in the STREET PARTY in Tressillian Road, the culmination of a whole series of other fund-raising events, which deserves Brockley's wholehearted support - and will also be fun.

Marsha Phoenix House provides a safe and supportive environment for homeless young women between 15 and 20 years of age to assist them to independent living.

Homelessness is a far bigger problem than is usually realised and is often invisible. 'Sofa-surfing' in houses of friends or relatives is one form of hidden homelessness which can be open to dangers of abuse and harassment. The Marsha Phoenix Trust emphasises that homelessness particularly affects young women, often vulnerable and alone, and campaigns to address this situation.

For further details of the street party (or the Trust's work) contact:

Marsha Phoenix House
90-92 Tressillian Road
London SE4 1YD
Tel: 0181 691-5911

St Peter's Church Open Day

Sat 18 Sept 1999 1000-1600 hrs

On Saturday 18 September, the parish church of St Peter's will be open for anyone to visit this beautiful Victorian building which is used on a twice weekly basis by people some of whom are definitely not 'Victorian' in age! These you will find climbing up the tower with you if you wish to have a view for miles around. Those who go up there say it's fantastic.

Meanwhile, down below, you can appreciate the beauty of the original stained glass windows preserved throughout the building. The sanctuary is beautifully adorned by such windows but also by a combination of pictorial tiles and mosaic. And, of course, there will be opportunities to hear its magnificent organ and, should you be an organist yourself, to try it out too.

Those who like modern music will not be disappointed either. St Peter's very own musicians may provide you with a few delightful surprises. Real jazz is heard in church most Sundays...

Children will be most welcome, with workshops and games to keep them occupied if their parents and relatives choose to browse around the church's historical records, have refreshments or chat with some of St Peter's own artists

If you are new to the area and looking for a church, this is your perfect opportunity to do some 'window shopping'. If you have any queries about the Christian faith, this is an opportunity to meet others on a similar journey, with no strings attached.

If you want a good time, let it be known that the day's motto is "Open Day? - Fun Day!"

Rev. Corinne Tournay

Facelift for Breakspeare Arms

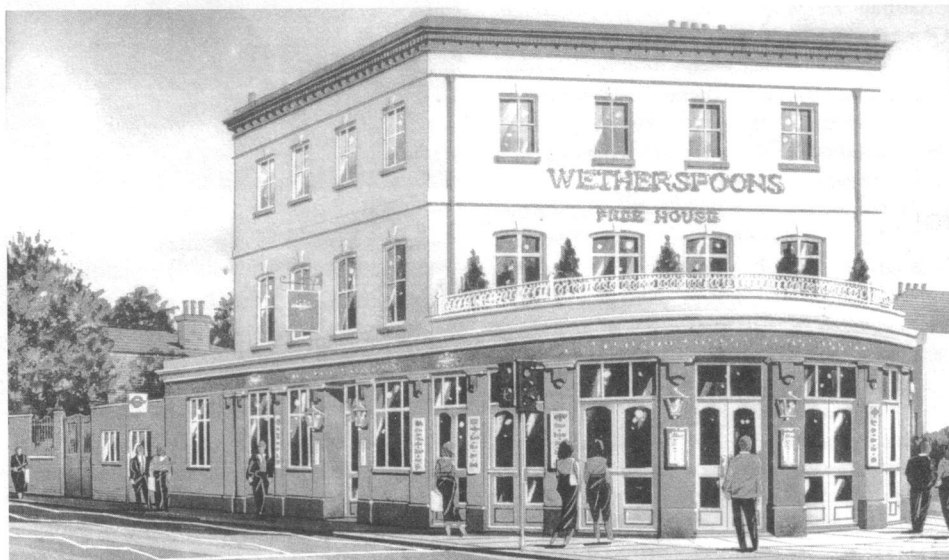
Brewery asks local people to come up with new name

The trouble-hit Breakspeare Arms - closed down under community pressure five years ago following allegations that it had become a haven for crack-dealers - finally looks set to be given a new lease of life.

The pub, located on Brockley Road near Brockley train station, was recently bought by brewery chain J.D. Wetherspoon. Now the company wants to give the pub a completely new image and has teamed up with the Brockley Society to launch a competition to find a new name to complete the facelift.

J.D. Wetherspoon's spokeswoman, Clare Yandell, says local police asked the company to change the pub's name to free it from links with its drug-related past. But the request has also provided an ideal opportunity to involve the local community in the new project.

The Breakspeare Arms was originally named after the home of local landowner, William Wickham. The pub itself was originally owned by a William Oxford Penseny. The pub is also thought to be close to the birthplace of Nicholas Breakspeare, the only Englishman ever to become Pope. J.D. Wetherspoon would also like to link the new pub with Brockley's historical past. "We're looking for anything that relates to the history of the building or has some



artist's impression of proposed exterior

form of local resonance," says Clare. The winner of the competition will be invited to cut the ribbon at the opening ceremony and become the first person to officially enter the new premises.

Work on the new pub is expected to begin this August and the company hopes it will be ready to open by February next year. The refurbished premises will be in keeping with J.D. Wetherspoon's theme of 'traditional-style pubs with all the modern facilities.'

The emphasis, Clare Yandell told us, will be on good pub grub and traditional real ales.

Camilla

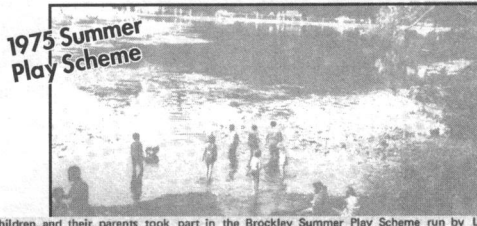
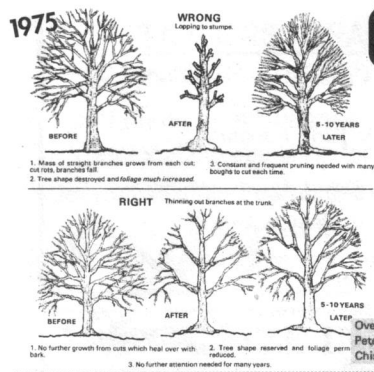
If you like any of the names mentioned here or have a better suggestion for the new Wetherspoon pub, please send nominations to:

WETHERSPOON COMPETITION,
PO BOX 23, LONDON SE4 1SW

or phone and leave a message on
(0181) 469-0814

**The final date for entries is
August 1st 1999.**

25 years of BROCKLEY SOCIETY... a random selection



1979 CAN WE HALT THE BLIGHT OF LEWISHAM WAY??
 is declined both visually and as a much of the decline is super- more permanent.
 OUR VIEWS what does happen to the shops changing use?
 Primary Schools in Garden, Ashmed at 11.15.18.19.20.21.22.23.24.25.26.27.28.29.30.31.32.33.34.35.36.37.38.39.40.41.42.43.44.45.46.47.48.49.50.51.52.53.54.55.56.57.58.59.60.61.62.63.64.65.66.67.68.69.70.71.72.73.74.75.76.77.78.79.80.81.82.83.84.85.86.87.88.89.90.91.92.93.94.95.96.97.98.99.100.

1977 ST. JOHN'S STATION
 will not be closed - official! B.R. inform us that its future is assured.

1984 Lights
 The Brockley Society has bought lamp heads from the Council at £10 each and poles are now needed for about 4 lamps for each mews. Electricity supplies will be obtained from individual houses, costing about £7 per light per year.

1975 Whatever happens in the Manor Avenue Traffic Experiment affects the whole Brockley Conservation Area

Geoffrey Road - King 'Rat Run' over 80% of commuter traffic ends up in Geoffrey Road am/pm

If you live on the 'Rat Runs' this meeting affects you . . .

8pm Thursday 10 April Myatt Garden School Upper Brockley Road

1977 the first ever Fayre

News Sheet No. 7

Hilly Fields Fayre

To judge by the advice given by the many experienced fair and festival organisers the Brockley Society was in for a hard slog in drumming up enough support to launch the first ever Brockley Midsummer Fayre. Not so. The initial enthusiasm became so infectious that Saturday June 21st, turned into a roaring summer's day of festivities - for less than £200 the thousands of people who turned up were entertained by five rock bands, three discos, stalls, side-shows, street entertainers, inflatable, a clown, roundabouts and a bagpipe band as well as prizes and a fantastic barbecue.

Our dear gypsy fortune teller was confident in the success of our venture. Our Treasurer finished counting at just over £500. That's £300 into the Kitty for Brockley Society. And into the future. Next year we plan a one week Brockley Midsummer Festival which we hope will be a joint enterprise with the Brockley Club, ideas to theatre, children and for the Midsummer Festival. Who knows, tradition.

1983 ME NEWS S

The Borough of Lewisham are hoping to help clear several mews of rubbish with the help of the 'Clean up squad'! It would be Wickham ween Wickham Ro Way and Manor Ashby Mews bet Brockley Road and I (from Wickham Arr Road). People using onto the other Wi up to Geoffrey Roac cleared it comple very welcome help whom Brockley Soc

1984 J.C.B. Digger
 The Council has offered a further £300 which will be used mainly to hire a digger to clear the old compacted heaps at the sides but sparing the well vegetation as far as possible. Surfacing In Ashby Mews the Council are proposing concrete tracks to improve the surface. Elsewhere a local road construction firm, O'Rourke, has offered to fill pot holes and muddy patches for a small charge. So with help from the Planning Dept. and money from the Council the local residents are trying to improve the area. If you

1975 Do you know your neighbour? Do you know your neighbourhood? Does Brockley need a Neighbourhood Council?

If you would like to see the people of Brockley working together for - Pre-school Play Groups Community Centre Civil Rights and Legal Advice Mothers and Toddlers Clubs Increased Senior Citizen Activity Then come to **MYATT GARDEN SCHOOL** Myatt Road Upper Brockley Road (in War Memorial) **April 24th at 7.30 p.m.** Video Films and Display

1985 The Ascent of St. Peter's Church Tower

BrocSoc arranged a visit to St. Peter's Church Tower on June 30th. Meeting Nobby Clarke at 10 a.m. - we climbed getting an unimpeded view down the centre. At the back of the balcony are weights w tower. Next we climbed to the first stage

BROCKLEY 1976
MIDSUMMER FAYRE
17th July
Hilly Fields

1976 45/47 Upper Brockley Road GREAT IMPROVEMENT No 4 (Lewisham Council)

1975 Various 'improvements' were made to the junction of Tyrwhitt Road and Lewisham Way last July. We asked why they had not informed us before they did the work and what was the purpose of it. The Borough Engineer replied that

1987 TYRWHITT ROAD IMPROVEMENT???

Various 'improvements' were made to the junction of Tyrwhitt Road and Lewisham Way last July. We asked why they had not informed us before they did the work and what was the purpose of it. The Borough Engineer replied that

1976 30 ST. MARGARET'S ROAD - OWNED BY LEWISHAM COUNCIL - EMPTY FOR OVER 2 YEARS !!

1977 MARSHA PHOENIX MEMORIAL TRUST Extract from the Social Services Committee Meeting March 14th.: "A hostel for 20 girls aged 15-20 is planned at 90-92 Tressillian Road. It is planned that the girls will be primarily the ter

1984 16A Tressillian Road This large house was compulsorily purchased by the GLC in 1968 when it was proposed to run Ringway One beside the railway in a cutting. Since then the house was a builder's stor building for was erected, stood derelict This is an imp area as it can

1975 LANDLORDS AND THE LAW

This is one of a series of three articles, the first on TENANTS' RIGHTS was printed in the January/February News Sheet and the final one on COUNCIL TENANTS' RIGHTS is hoped will be printed in the next edition. If anyone requires further copies of any of the three please contact the Secretary.

1976 The Case For Collective Housing Schemes

In recent months much publicity has been given in the local press to the case for and against the establishment of a collective housing scheme and extreme views have been expressed by a few local residents. Some of the letters of collective housing and did little to the petition seemed to be black or white.

BROCKLEY SOCIETY
 NEWS SHEET No. 9
 October 1976

BrocSoc 3 years old...!

When Conservation Areas are 'declared' some tend to become 'trendy' and 'gentrified', ending up as precious enclaves of one social class. But Brockley in this sense is unique in that it is a perfect example of what the politicians often refer to as a 'good social mix' - different income groups, different ethnic groups, a balance of old and young people, light industry in the mews, a variety of shops and pubs - all adding a quality to the whole area: a quality many people feel is worth preserving - hence the Brockley Society!

Annual General Meeting
 THURSDAY, OCTOBER 21st 1976 at 8 o'clock
 In St Peter's Hall
 Come and help to decide how we can give this area a better place to live in: enjoy wine & coffee, beer & banquets, islands which were requested by the Society. The outcome of this is a great deal on what is decided result of the traffic experiment Friendly Street area.

1985 Where is Luxmore Gardens?

At the moment Luxmore Gardens is reached from Malpas Road, but soon it will be a short cut off from Rokeby Road and reached from behind the Library. Over the last year there have been many discussions to decide what it is closed at the

1976 BROCKLEY BAPTIST CHURCH
 Planning application has been made to demolish the existing church building in Rokeby Road. The new proposal is to redevelop the site with a block of flats on Rokeby Road and a new church in Vulcan Terrace. Anyone wishing to see the plans either contact Chris Johnson 25 Rokeby Road (692 1553) or Room 317 Catford Townhall (690.4343).

1984 WAKE UP!

Channel Link Threatens Sleepy Brockley

One of the four options for Route 1 will tunnel under our Conservation Area. This tunnel may surface near Peckham Rye station or it may surface at Brockley Cross as shown on the maps. As we understand, there will be a cut-and-cover construction from Brockley Cross back as far as St. Peter's Church, which will have a devastating effect. Apart from the destruction caused

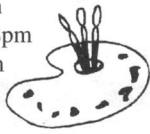
This is the reason that it did nothing whatsoever until residents found out from other sources and asked the council to act. We have been bombarded with publicity from other South London councils and residents' groups since the beginning of the year. Has Lewisham been too quiet? Even our M.P., Joan Ruddock has been kept in the dark! We hope that more officials are now aware of the havoc such an event could cause and that they will make every effort to

WHAT'S ON . . .

BROCKLEY OPEN STUDIOS 99

BROCKLEY ARTISTS

Local artists open their studios allowing us to view paintings, prints, ceramics and sculpture.
Saturday 3rd July 12 noon -8pm
Sunday 4th July from 12 noon-8pm
Monday 5th July from 5pm-8pm



LEWISHAM LIBRARY

199-210 Lewisham High St, SE13

COMPUTER TASTER COURSES

Introductory courses in the open learning centre include:

Do you find computers difficult?

Tuesday 22 June 10.00am-1.00pm

An Introduction to the Internet is also available; to find out more call reception on 0181 297-9677

BLACKHEATH HALLS

23 Lee Road London SE3 9RQ

Telephone: 0181 463-0100

COLLABORATIONS

A dynamic blend of music and physical theatre, this performance is the culmination of six months' work by local young people.
Friday 16 July 7.30pm Tickets: £4

THE WAILERS

For the first time since the death of Bob Marley in 1981, the legendary Wailers have come together again to play music that propelled reggae onto the world stage. New material will be played alongside old classics.
10 June 8.30pm. Tickets: £15

LABAN CENTRE LONDON

Laurie Grove, New Cross SE14

Telephone: 0181 692-4070

Evening and Saturday classes in Europe's leading dance school for beginners and professionals including: AFRICAN DANCE, BALLET, CONTEMPORARY DANCE, CREATIVE DANCE AND MOVEMENT (adult & children classes available)

LEWISHAM COLLEGE

Lewisham Way SE4 1YE

SATURDAY CLASSES include: Build Your Own PC, Child Development, Nike Fitness Trainer's Course and Personal Styling (makeovers/colour analysis/bridal accessories). Telephone: 0181 692-0353 for further details.

WAVELENGTHS LIBRARY

Giffin Street, Deptford, SE8 4RJ

HOMEOPATHIC PRACTITIONER

Jane Bishop will be conducting a talk on Women's Health on *Tuesday 10th August* between 6-7pm

JAZZ AT THE CROSS

369 Queens Road SE14

BIG SWING

Lewisham's own 18-piece swing band
Saturday 12 June doors and bar open at 8.00pm - live music at 9.00pm.
Admission £6 (£4.50 concessions.)

GREENWICH DANCE AGENCY

The Borough Hall, Royal Hill SE10

Telephone: 0181 293-9741

Classes £4 / £3concessions

Include:

YOGA, IRISH, EGYPTIAN, SALSA, CONTEMPORARY, FLAMENCO, CAPOEIRA, PLAY DANCE (0-3yrs), FIRST STEPS (3-5yrs), MOVERS & SHAKERS (5-8yrs) and DANZZONE.

LEWISHAM BOWL

AMF BOWLING

11-29 Belmont Hill, Lewisham SE13

Telephone: 0181 318-9691

New alleygator clubs ideal for children up to the age of 12 years.

- * 1 game of bowling
- * Achievement awards
- * Attendance awards

Mondays and Fridays at 4.30pm weekly fees: £1.65

WALKS

DEPTFORD, LEWISHAM AND CREEKSIDE

TOUR GUIDES

Discover old Deptford and its stories.

Call 0181 291-4254 for information on walks around the area.

HORNIMAN MUSEUM

100 London Road, Forest Hill

London SE23 Telephone: 0181 699-1872

HORNIMANIA FAIR

Sunday 27th June and *Sunday 4th July*

This annual fair is an event is not to be missed.

AFRICAN WORLDS EXHIBITION

Celebrates the diversity, history and creativity of African, Afro-Caribbean and Brazilian art and culture. Explained through the voices of elders, drummers, artists, exiles, curators and anthropologists, this exhibition aims to encourage constructive dialogue which will lead to greater understanding and respect of these cultures and their contribution to the global community.

Open *Monday to Saturday* from 10.30am to 5.30pm and *Sundays* from 2.00pm to 5.30pm

ADMISSION FREE

LEWISHAM THEATRE

Catford SE6 4RU

Box Office: 0181 690-0002

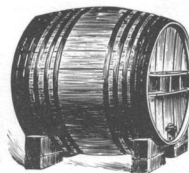
7TH CATFORD BEER FESTIVAL

Wednesday 16th-Saturday 19th June

Wednesdays 5pm-11pm

Thurs, Fri and Sat 12 noon to 11pm

Admission free except for Thurs & Fri after 5pm



ST PETER'S CHURCH & CENTRE

Cranfield Road, Brockley SE4

CHURCH OPEN DAY

Throughout the day we are invited to climb the bell tower, listen to a jazz band as well as participate in games and workshops.
Starting at 10am on *Saturday 18th September*

EVENING CLASSES

Monday

STRETCH & TONE 7.30pm

Tuesday

BROWNIES 6-7pm.

Judo 7.30-9.30pm.

Wednesday

AKIDO 8-10pm.

DOG TRAINING 7-10pm.

Thursday

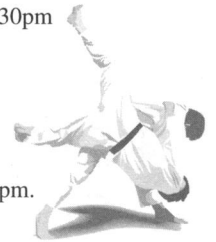
STEP 7.30pm

BADMINTON 8-10pm.

Friday

JUDO 7.30-9.30pm

The hall is also available for private hire
Telephone: Theresa Anscombe 0181 693-8030 for details.



BROCKLEY JACK THEATRE

410 Brockley Rd, SE4 2DH

Box Office: 0181 291-6354

Tuesdays to Saturdays 8pm

Sunday matinee at 4pm.

Tickets £8 / £5 (cons)

Tuesdays all tickets £3

RIVOLI BALLROOM

350 Brockley Road, Crofton Park, SE4
Telephone: 0181 692-5130

LINE DANCING

3rd Saturday in the Month 8-1am, £5

BEGINNERS' BALLROOM, LATIN, SOCIAL DANCING. *Mondays* 8-10pm, £4

BALLROOM, LATIN, SOCIAL DANCING, all levels. *Tuesdays & Sundays* 7.30-11.30pm
Line Dancing & Lessons. *Wednesdays* 8-12am £4

TEA DANCES *Tuesdays & Fridays* 1.30-4.45pm. £4

ROLE-PLAYING CLUB

"The Gathering"

Friday nights, 6pm - 9pm, entry £1.

Rear of St Hilda's Church, Brockley Rd.
0181 699-4948

ST HILDA'S SUMMER FETE

3rd July 1999

10.30am - 3pm.

THE DRAGON'S DEN

398a Brockley Road.

FANTASY GAMING SESSIONS

Saturdays, for 7+years. Free.

0181-699 4948.

GOLDSMITHS DIRECTORS FESTIVAL

New York playwright, Jeff Jones's *DER INKA VON PERU* - a romp through colonial history and western literature premieres at Goldsmiths' Theatre from *6th - 10th July*, at 7:30pm, £4. Box office: 0171 919-7426

Please let us know about Autumn events to be listed in the next newsletter by the first week in September.

TAYLORS / SPAR

1a Tyrwhitt Rd - 0181 892 4918

mini market - off licence - lottery

Your local friendly shop for all your daily provisions - fresh bread baked on the premises!

Mon - Sat 9am - 10pm, Sun 10am - 8pm

LARGE SIZE INKJET COLOUR PRINTS

Up to 36" wide, any length, from digital files, or scanned single prints or editions.

Competitive prices.

0181 - 694 0267

Fully qualified
CARPENTER, DECORATOR
AND ROOFER

15 years experience

Joe Weightman

0181 692 2876 / 0976 414 956

References available.

Your local computer specialist



Computer problem? We'll solve it.

Hardware - Software - System Solutions

17-19 Blackwater Street, Dulwich, London, SE22 8SD
<http://www.system-solutions.co.uk/cafe>

Telephone: 0181 693 3355

"FREDAIRE"

Hairstylist Est. 42 years

Male and Female

Babies, Teens and Beauty Queens,
Boys & Men who are on the scene,
Ladies, Grans, & all Has-Beens,
Conditioning and all you need,
All our work is guaranteed,
Free consultation on root formation!

32 Loampit Hill, SE13 7SW
0181 692 1794 24hr ans. service.

£5 off with this ad!

MGC Secretarial Services

Word-processing - Letters, CVs,
Forms, Projects, Thesis, Accounts.
Fax Service, Photocopying,
Binding, Laminating, Passport
Photos, Small Volume Printing.

0181 469 0634. Fax: 0181 469 0639
353a Brockley Rd, SE4 2AG

D.J.A PLUMBING & GENERAL MAINTENANCE

Plumbing/Carpentry & general
building.

D J Atkins.

0181 691 2553 / 0797 160 3840

No Job Too Small. No Call Out
Charge. Free Estimates.

HONOR OAK GALLERY

13TH Summer Exhibition 22ND June - 17TH July 1999

Thomas Hennell R.W.S. (1903 - 1945): Watercolours & Drawings
Trevor Price A.R.E: Recent Prints, Vadim Frolov: Wood Engravings
Mounting, Framing & Conservation of Works of Art & Frames
52 Honor Oak Park, SE23 1DY, 0181 291 6094

DRAGONS DEN



Wargaming,
Fantasy Figures
Gaming Materials
Paints, Glues and
Accessories.

398a Brockley Rd. 0181- 699 4948

WANTED - CAKES!!

Please bake a cake for the
fayre tea & cakes stall.

ALSO - cake competition for
under 8s, & 8 - 13s.

Bring your cake on the day!

PLANNING APPLICATIONS

February - May 1999

40 Tyrwhitt Road

Continued use of ground floor and part of first floor
as a day nursery.

51 Wickham Road

Construction of a 3 storey side extension to provide
a 1-bed and a 2-bed unit

Craig Court, 88 Wickham Road

Construction of a carport and walkway to the rear
of flat 2.

84 Tyrwhitt Road

Demolition of the conservatory and erection of a
replacement conservatory

156a Tressillian Road

Retention of a satellite dish on the front

156c Tressillian Road

Retention of a satellite dish on the front

r/o 7 Wickham Road

Demolition of the garages and construction of a
block of 3 replacement garages

r/o 45 Wickham Road

Erection of a pair of 2 storey and roof space 3-bed
houses. (Planning permission has been given for
two, 2-bed houses and they want to make them
taller.)

APPLICATIONS FOR TREE WORKS AT:

37a Tyrwhitt Road, 68 Geoffrey Road, 39
Breakspears Road, 81, 101 Manor Avenue, 210
Tressillian Road, 36 Harefield Road, 2 Montague
Avenue, 70 Wickham Road, 21 Tressillian Crescent

ADVERTISEMENTS

Send finished typed hard copy (and fee -
cheques made out to Brockley Society)

to: Brocsoc Newsletter Ads,
17 Tressillian Crescent, SE4 1QJ

SIZES AVAILABLE:

Small	3.6cm x 6cm	£15
Medium	7.5cm x 6cm	£25
Large	12.4cm x 7.6cm	£40

all ads **must** be prepaid

CIRCULATION 4000
READERSHIP 8000

LOOKING FOR OLD FRIENDS

A former Brockley resident has written to
the Brockley Society asking for help with
research for his family archive.

Mr Michael J. Redford says he would love
to hear from anyone who lived in Brockley
during the war years and if the names Michael
Nicholson and Raymond Clark ring a bell with
anyone. Ray Clark was Mr Redford's best
friend at Stillness Road School. "I realise of
course that the chances of contacting anyone
from those distant times are remote and
become even more so as time passes and that

is why I am exploring every possible avenue in
an attempt to trace old friends" he writes.

If you have any information that might help
Mr Redford, please contact the newsletter on
90181 469-0814. **Camilla**

MILLENNIUM CONCERT

Give yourselves a break from millennium
fever on Friday January 7th 2000 when
Brockley musicians and artists will combine to
give an evening of musical entertainment set
amongst a display of ceramics, paintings, pho-
tographs, sculpture and other work from
Brockley studios.

The music will be provided by conductor
Joseph Cullen and friends. Everybody who
made it to their last concert at St. Peter's earli-
er this year - story in the March newsletter -
will know we can expect a thoroughly enjoy-
able evening.

The Brockley area is also unique in having
more artists per head of population than any
other part of the country. A recent government
survey has confirmed this fact. Thanks to St.
Peter's, we have an opportunity to enjoy a sam-
ple of all this talent next January.

Artists, designers etc who want to know
more about participating should contact Chris
on 0780 360 9970. **Chris**

MIKIPRINT

Specialists in short-run printing of:
**business & fancy cards, letterheads,
notepaper, promotional items, c.v.'s
wedding invitations.**
Scanning, designing and laser printing.
Tel: 0181 692 8591

ASTROLOGY

**Birthchart Interpretations
Birthcharts for babies & children
Relationship readings
Astrology & Homeopathy sessions
Phone 0171 639 7128**

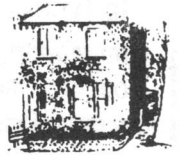
COUNSELLING & PSYCHOTHERAPY

A fully professional service
By an experienced therapist

Andrea Clough
Dip.Couns, Dip.Psychotherapy,
U.K.C.P. Accredited

0181 691-5303
Brockley SE4

Rocodells



**Estate &
Lettings Agents**

388 Brockley Road, Brockley,
London SE4 2BY

0181-691 8731/0313

Call now for free valuation

WANTED! COUNCIL EXCHANGE!

I have a 2 bed flat (conversion)
near Hilly Fields and want to swap
for flat or house, in Lewisham/Lee.
Tel: 07930 888637

C.J.'s Property Maintenance & Repairs .

**Builder, Carpenter, Painting & Decorating, Restoration work - Home Improvements
Landscape Gardening, Walls, Fencing, Patios, Paths & Ponds etc.
Exterior painting and repointing, Insurance work undertaken
Please ring Colin Brooks for free advice & estimates on
0181 695 6234**



Brockley Branch
321 Brockley Road
Brockley SE4 2QZ

Tel 0181-694 2999 Fax 0181 694 2990

**Residential Sales
Free Appraisals
Lettings
Property Management**

**Aromatherapy Massage
Reflexology, Reiki
Indian Head Massage**
Appointments held in Brockley

Visit me at the fayre!

Helena 0181 305 6865
HelenaArguelles@compuserve.com

LOCAL CARPENTER

**28 years experience.
Apprenticeship trained.**

Doors, locks, kitchens and flatpacks,
windows, and period restoration - i.e.
high skirtings & wide architraves, and
other mouldings, traditional built
cupboards, wardrobes & bookcases.
Also electrical service, plumbing &
decorating

**All work guaranteed.
Free Estimates. Call Len
0181 244 5838 / 0976 579 721
No job too big or too small!**

JANE BISHOP LCPH

Homeopathic Practitioner

*The way to natural health with
Homeopathy
One of the fastest growing
forms of alternative medicine
today.*

For an initial consultation please phone
Jane on

0181 694 6753

At her clinic in Upper Brockley Rd SE4

OSTEOPATHY AT THE SYDNEY FISHER CLINIC

Osteopathy can help a variety of acute
and long-term problems including:
*lower back and neck problems
headaches and migraines
whiplash injuries
sports injuries
arthritis and rheumatism*

We can also help pregnant mothers,
babies and children.

**Appointments six days per week;
some evenings until 7pm. Both male and
female practitioners available.**

For more details or advice please contact us at
81 Tressillian Rd 0181 684 2714

EASTWOOD GARDEN SERVICES

Designs, consultations, construction
restorations, maintenance.

For your 1999 garden changes call:

0181 858 6541

CB DECORATING EXTERIOR PAINTING

interior decorating • all
CARPENTRY work undertaken •
free estimates •
ring Colin

0181 695 6234



BROCKLEY SOCIETY

BARBECUE

The Society owns a very large
and splendid barbecue.



You can hire it for the modest fee of £10 for the weekend.
Contact Bob on 0181 692 2289