

BROCKLEY SOCIETY



Issue 78 September 1996
Charity No: 1004245

Delivered free to 4 000 households

New Main Committee Needed – Opportunity Knocks??

Following our appeals for help with both the organisation of the Summer Fayre and the distribution of newsletters, we have discovered a whole host of community-spirited individuals who care about Brockley. Some of you have already been involved over the last few months, and for those of you waiting in the wings this newsletter brings you a great opportunity. Two members of the main committee are moving out of the area and the current Chairman will be hanging up her spurs. Therefore, to allow the Society to continue we need to recruit a new Committee at the **AGM on the 2nd of October**.

The role of the Society, which was established 22 years ago, remains as important as ever; not only as a focus for the local community, but as an active body campaigning to maintain and improve the quality of life in the Brockley Conservation area. The Society has a wealth of knowledge and experience gained over many years on how to influence environmental, transport and planning matters, through a combination of local activity, campaigning, contacts and building relationships with people that matter. As a local Conservation Society we are remarkably effective, but only through the active support of members of the public who are prepared to give up their time to get involved in local issues. The Society's strength comes partly from the fact that it represents a large community and can provide a local voice, one that is respected by journalists, Councillors and the Council.

As local Councils remain under pressure from Central Government, lack of funds and the commercial aspirations of developers, it is more vital than ever that we have a Society that can provide a forum for the expression of local opinion. The Brockley Society has worked hard to build the links and bridges and become

recognised and respected. It now needs the active support of new Committee members. This is your chance and your responsibility.

The Society is also active in many other areas, developing a sense of community in the area. This includes publishing the Newsletter to inform people what is happening in the area, organising the Summer Fayre and Christmas Craft Fayre to raise funds, as well as the publishing of the Services Directory and other initiatives to help support local businesses.

The main committee posts are open to anyone living in the Brockley Conservation area. To help you choose which post you would like to stand for, we have described below the main areas of activity.

The Chair

The Chair is the Brockley Society's figure-head, the public face of the Society. As well as chairing the meetings, he/she also has to deal with media enquiries on the Society's behalf and represent BrocSoc in meetings with the Council and other public bodies, such as other conservation societies, the Civic Trust and Lewisham College. The Chair's other main role is to provide a strong lead to the Society about the issues we should be campaigning on and new ideas for fund-raising and making people aware of BrocSoc, what it stands for and the work it does. As Chair you need to be flexible, willing to deal with a range of people and to be able to spend time on Brockley Society affairs outside the regular meetings.

The Vice Chair

The Vice Chair's formal duties are to stand in for the Chair when he/she is unavailable. In addition to this, recent Vice-Chairs have also taken on other responsibilities in dealing with topics which are of particular interest to them; for instance, one Vice Chair also edited the newsletter, whilst another took a lead in dealing

with transport issues in the Brockley area.

Secretary

The Secretary's duties include taking the minutes at formal meetings and recording action points in committee discussions. They also involve arranging meetings, booking the committee room and liaising between committee members, ensuring that the right people have the right information at the right time. We aim to keep minutes as short and informal as possible, recording decisions and action points rather than every detail of discussion, so shorthand is not needed, but you would find access to a word processor useful.

Treasurer

No prizes for guessing the Treasurer's main responsibilities. Apart from keeping the Society's accounts and handling the financial side of the annual Summer Fayre, the Treasurer is also responsible for collecting the payments for advertising in the newsletter four times a year. BrocSoc does not have a large number of financial transactions (or a lot of money!), but a basic knowledge of bookkeeping and/or accounts would be helpful.

If you are interested in becoming more involved with the Brockley Society you are welcome to ring the Chairman on 0181 469 3975 to discuss any aspect of the posts in more detail.

Being involved with The Brockley Society you can not only help improve the quality of your local environment, but also influence decisions which are made about the area, such as planning, transport, open spaces, litter, graffiti, policing etc. An added bonus is your chance to meet a wide variety of like-minded local people.

"Become part of a community where you know your neighbours and where your friends live round the corner."

BROCKLEY SOCIETY MEETINGS

Venue: St. Peter's Centre, Cranfield Rd. Tel: 0181-693 2030 Time: 8.00pm

dates: **AGM 2nd October 1996** • 4th December 1996

Please contact an officer from the list below if there is an issue which you would like to be raised, or come to one of the meetings, which are open to everyone

Chairman 0181 469 3975
Secretary 0181 691 1767
Treasurer 0181 691 5659
Advertising 0181 691 5659
Transport 0181 691 3096
Police Liaison 0181 691 1767
Environmental 0181 691 0953

Editor & Production 0181 469 3975
Press & Publicity 0181 469 3975
Fayre 0181 692 8512
Distribution 0181 691 1767
Planning 0181 692 6977
Local History 0181 692 6977
Hilly Fields Park Users 0181 691 7234

The Brockley Society welcomes all - regardless of race, religion, gender, sexual orientation or physical disability

Hilly Fields Centenary Fayre



The Centenary Fayre this June was a great success. We'd like to say a BIG thank you to everyone on the Fayre Committee who worked so hard to get it all organised, to everyone who helped on the day, setting up stalls, taking down stalls, making the tea etc. etc. And another BIG thank you to all the local businesses who once again supported the Fayre by donating raffle prizes, sponsoring stalls, and helping out in other ways, to make it such an enjoyable community event.

So thank you to:

Tyrwhitt Road

The Talbot
Taylors Grocers

Brockley Road

Rocodells
Goodies Secondhand
Homeview Video
Ashik Dry Cleaners
Amin Chemists
Gogi's Wines
First Cuisine
HM Car Wash
Fine Taste Delicatessen
Saxton & Co.
La Lanterna
Mr. Lawrence
Brockley Jack
Oak Estates
Sewells Newsagents
Turner's Hardware

Loampit Hill

Spalding and Sparrow Newsagent
Northwoods Chemist
KJ Builders' Supplies
David Mitchell Picture Frames

Ladywell Road

City Gardener
CXY Minimarket
Manor Avenue
Mikiprint
also
Joan Ruddock
David and Clarissa Porter
St. John's Ambulance
Crime Prevention Unit
First Brockley Scouts
Lewisham Fire Station
Cakes Direct
West One Stationers
Laurie Caribbean Grocer
Roy Fenton
Lewisham Borough Council
Ivor Hurdson
John Iles
The Fox Project
Moonstone
Prendergast School
Flowers and Thoughts
MSE Waverley School
The Green Room
Brockley Police

And a special thank you to John Iles, (who played Inspector Dashwood in the TVseries "The Bill") for opening the Fayre and coping wonderfully with the difficult task of selecting Miss Brockley 1996 and to St. John's Ambulance for providing first aid.

If we've left anyone out, we apologise profusely. Please let us know and we'll make sure you get a mention in our next newsletter.

Congratulations to Jacinta O'Shea Ramdeholl of Cliffview Road, who won the 1996/97 Miss Brockley competition. 11 year old Jacinta who loves canoeing, dance and guitar, starts at Prendergast School in September.

The winners of this year's **front garden competition** were:

First prize	13 Tremaine Close
Second	58a Tyrwhitt Road
Third	90 Geoffrey Road

Window box and planters winners:

First prize	62 Tressillian Road
Second	3 Beverley Court
Third	22 Rokeby Road

Prizes for all winners were kindly sponsored by **The City Gardener, Ladywell Road, London SE13**

Guess The Weight of The Cake

Winner: Jenny King

HILLY FIELDS CENTENARY APPEAL

Hilly Fields Park is 100 years old this year and BrocSoc has decided to celebrate the centenary by creating something in the park that would be both useful and beautiful, a thank-you to the people who made the park 100 years ago, and a gift to the people of Brockley for the next 100 years.

The good news is that we have now raised £7000 by donations from charitable foundations, the Brockley Society and lots of local people. This initial sum will allow us to put up railings to create a picnic area next to the playground. The work will be done by a Brockley firm, the Art of Cast, and will be starting in a few weeks time. We had hoped to raise in the region of £30,000 to allow us to install not only railings, but a feature gate, drinking fountains and more play equipment. Any more money that we raise will continue to be put towards this good cause, so if you have not already made a donation, get your cheque book out now! Cheques should be made payable to:

The Brockley Society
c/o The Treasurer
117 Tressillian Road
Brockley SE4

Hilly Fields Park Users Group

The Park Users Group was set up to make a link between the Council and local people for Hilly Fields. It has been meeting since November 1995, and is open to anyone who wants to come along. The meetings are about every 2 months - the next one is on: **Thursday 19 September 7.30pm at St Peter's Centre, Cranfield Road, Brockley SE4.**

So far there has been quite a lot of progress in the park. This includes:

- **improvements to the playground** with a new train climbing frame, new swings and new seesaw, new safe surfacing and general repairs.
- **more litter and dog mess bins.** The pooper scooper is now supposed to come every Tuesday. Please keep your eyes open to see if it does.
- **a start on repairs to the paths**

• picnic tables in the picnic area

Plans for next year include:

- **repairing the paths**
- **repairing and refitting the toilets**
- **sowing the meadow area** by Adelaide Avenue with wild flower seeds.

• bulb planting.

We will be putting bulbs into the wooded slopes by Eastern Avenue and beside the football pitch.

There is to be a bulb planting session for everyone who would like to join in. The date will be in October. For details, or to volunteer to assist with the planting come to the meeting on 19 September, or ring Frank Mason at Lewisham Council 0181 695 6000, or Trottie on 0181 691 7234.



Octavia Hill Society Visit Hilly Fields



Freddie Hill, Grandson of Octavia Hill

On Sunday 11 August The Octavia Hill Society visited Hilly Fields, where they were greeted by a team representing The Brockley Society, Hilly Fields Park Users Group, The Ladywell Society, Lewisham Local History Society, and a number of interested local residents.

Octavia Hill, founder of the National Trust, one of the Bloomsbury Set, and leading member of the Kyrle Society, was actively involved in the development of Hilly Fields together with a local Committee and local Councils.

In recognition of the importance of providing amenity space in the suburbs of London which were developing rapidly at the time Hilly Fields, being an area of high ground and in one of the poorest boroughs of the time, Deptford, was felt to be an important site, as it would receive the "clean air of the country", that in those days lay just beyond. These Victorian philanthropists raised the money to purchase Hilly Fields from a number of sources, including local residents, LCC, local Councils and charitable trusts.

To commemorate the Centenary of Hilly Fields, 40 members of the Octavia Hill Society travelled from Wisbech, Cambridgeshire. The occasion was marked by a rose planting ceremony. The Octavia Hill rose has been planted near the Bowling Green and we hope it will be enjoyed by local residents for many years to come. Many of the visitors, in memory of their ancestors and in support of the Brockley Conservation area, have contributed to the funds being raised by the Hilly Fields Park Users Group and the Brockley Society for the improvement of the park. We are grateful for their support.

THE BROCKLEY SOCIETY CHRISTMAS CRAFT FAYRE



**Saturday 30 November
11am - 5pm
Lewisham Art House
140 Lewisham Way SE14**

The Christmas Craft Fayre is now in its third year, and well recognised by traders and local residents as the perfect place to track down unusual Christmas presents.

Over 30 craft stalls will be offering good quality, original products including ceramics, linens, gifts, pictures, textiles, candles, cards etc.

All the product is hand made and offers great value. Refreshments will also be available.

If you would like to book a stall, please ring 0181 691 0349



LOCAL SERVICES DIRECTORY

We will soon be publishing a second expanded edition of this much-used guide to local services and businesses. It is particularly designed to help you track down those services that are difficult to find such as:

- window cleaners
- domestic cleaners
- babysitters
- dog walkers
- gardeners
- decorators

However, we also welcome entries from all local businesses, however diverse!

Please send your entry and cheque for £10 (payable to 'The Brockley Society'), to:

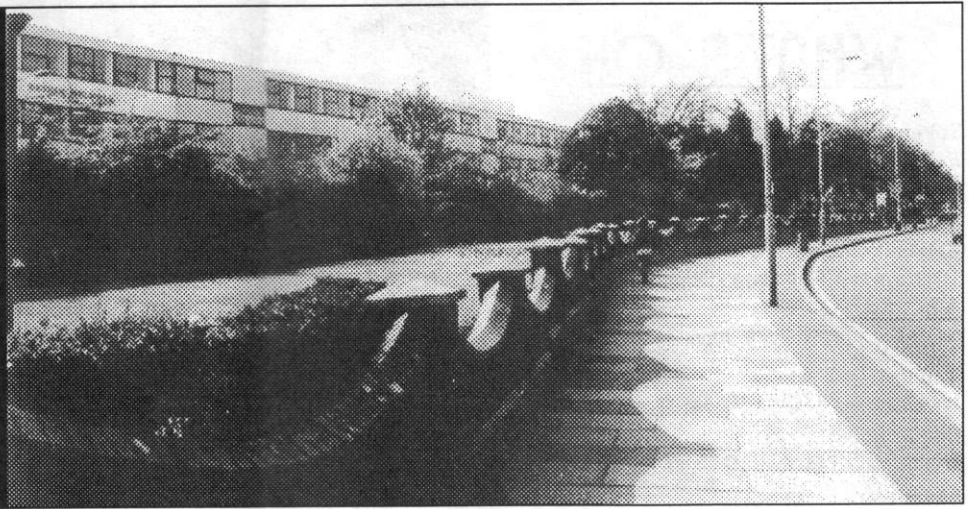
The Brockley Society
c/o The Treasurer
117 Tressillian Road
Brockley SE4

The Services Directory is delivered free to 4,000 homes in Brockley.

"Keep business local"

Wickham Building to be demolished.

New homes to be built



Lewisham College is selling the site of the Wickham Building (located on the frontage to Lewisham Way between Breakspear's Road and Wickham Road) to PureLake Homes. The developer, seeking planning application for a residential development of 66 homes (of which 20% is social housing) has commissioned architects to come up with designs for the area. A public meeting, organised by The Brockley Society, was held on 19 August, in the St Peter's Centre to allow local residents to see the plans and make their views known to the developer, architects, Lewisham Council Planning Department and local Councillors. The plans were hardly impressive, and the resubmission of the plans that followed the meeting were little better. The Brockley Society Planning Committee has now had an opportunity to study these plans in detail, and has submitted a 4 page document to the Council stating the local objections to the scheme. Below are some excerpts from the letter:

"We believe that this development has been poorly thought out, with many of the details unworkable, and that the proposals require significantly more work before planning permission is granted..."

"This development is providing little other than maximum profit for the developer, an objective which should be of little concern to the Council. We do not believe it meets the needs of the local population, nor meets any significant number of the sustainability and transport objectives stated by Lewisham Council in its Agenda 21 document. Nor does it address the concerns stated in the recent Government transport document green paper 'Transport - The Way Forward', published last month, which is committed to doubling cycle use by 2002. This responsibility is to lie with local authorities, and we would like to see this development as the first stage in this strategy, both by enabling cycle ownership and limiting car parking..."

"The 4 storey blocks on the Lewisham Way frontage are a scaled down version of the buildings surrounding them, with many of the details being inaccurate or inappropriate..."

"Window surrounds, window reveals and porches, corbels, brackets etc. are not shown in enough detail..."

"The design of the mews houses and their layout is of serious concern to us. Nowhere in the conservation area has any mews development been allowed greater than 2 storeys. This, originally in accordance with the Mews Design Guide, was instigated to prevent overlooking, loss of light and privacy to adjacent properties and to echo the small stable and coach house blocks in the area. This development, with its mansard roofs, is not only out of keeping with the character of the area, but is effectively three-storey. This will mean that the gardens of Breakspears Road and Wickham Road will be overlooked and the mews will become another street..."

"The 3 bed houses are not suitable for family use. The 3rd bedroom is too small, and there is insufficient living space. These houses offer no more than 2 bed accommodation. They do not meet the needs of a family"

"Local estate agents and housing associations have confirmed the view stated at the public meeting, that market demand is for genuine purpose-built 3 and 4 bedroom houses..."

"All car parking should be on the surface, allowing maximum flexibility, the opportunity for better living space, and a better and safer street frontage. Planting should also be incorporated in the car parking areas to provide shade, encourage wildlife and improve the visual appearance of the site..."

"There should be cycleways through the site..."

"The mews road is very narrow, which will make cars passing very difficult, especially if a lorry or delivery van is parked. This could make emergency service access impossible..."

"The design of the Gate House is appalling, both visually and in terms of living space..."

"We look forward to hearing your views

together with those of the RTPI and the Civic Trust which we have invited. We urge you not to support this proposed second-rate development and to refuse planning permission. We suggest that further work is required before a final positive decision can be made."

STOP PRESS – we have just heard that the planning application has been postponed by the Council, in light of the objections by the Brockley Society.

Watch this space for further details. If you require further information contact the Brockley Society representative on 0181 692 6977.

ENVIRONMENT COMMITTEE

**Next meeting:
Mr. Laurence Wine Bar
Brockley Rise
Thursday 12 September 8pm**

Come along, support a local business and have a drink. This fun-loving committee meets every 2 months and attempts to make Brockley a better place to live, work and play.

HOW TO SUBMIT AN ARTICLE

If you would like to submit an article to the newsletter, please send the article on a disk that is readable by the AppleMac (we have PC Exchange software) as well as a printout of the article. The disk will be returned to you.

Please help us to keep costs down by enclosing the appropriate postage for return. Many thanks.

Handwritten articles are also welcome!

send to: 36 Manor Avenue, Brockley, SE4

WHAT'S ON

St Peter's Centre, Cranfield Road, SE4

Regular events:

Brownies

Tuesdays 6.00pm - 7.30pm

Keep Fit

Tuesdays and Thursdays 7.30pm

Judo

Tuesdays and Fridays 7.30pm - 9.30pm

Akido

Wednesdays 8.00pm - 10.00pm

Dog Training

Wednesdays 7.00pm - 10.00pm

Badminton

Thursdays 8.00pm - 10.00pm

Judo

Thursdays 7.00pm

28 September 2.45pm

Jumble Sale in aid of St Peter's Church

5 October

St Peter's Harvest Supper

Lewisham Art House

Exhibitions

Wednesdays - Sundays 11.00am - 6.00pm

Admission free

5 - 29 September

'Gin, dear?'

5 graduates from Reading University MA

10 - 13 October

10 artists from Maidstone Print Makers

Kent Institute of Art and Design

16 October - 10 November

5 Lewisham ceramic artists

13 -24 November

3 Lewisham artists, mixed media, textiles, ceramics

Life Drawing Classes

Thursday 7.00pm - 9.00pm

£5 per session

0181 694 9011 for details

Free children's art workshops

Saturdays 21 September - 30 November

11.00am - 1.00pm

Limited places. Booking essential.

0181 694 9011

Art Workshops

Monday & Thursday 4.30pm - 6.00pm

Children 5 - 12 yrs

£5 per session plus materials

Wednesday 4.30pm - 6.30pm

Children over 12 yrs

£5 per session plus materials

Thursday 6.00pm - 8.00pm

Adults

£6 per session plus materials

Yoga

Tuesday 7.00pm - 8.30pm

£3.50, £2.00 concessions

Thursday 1.00pm - 2.30pm

Donations appreciated

Lewisham Local History Society

27 September 7.45pm

'The Green Chain Walk: an historical survey'

Ridgeway Community Centre

Baring Road, Grove Park SE12

28 September 2.45pm

Start of Green Chain Walk

Baring Road, Grove Park SE12

Naming ceremony of 'Railway Children Walk'

in commemoration of E Nesbit

25 October 7.45pm

Salvation Army Hall, Albion Way SE13

'Transport before the railways: London's carrying trade'

Open House

"A celebration of London's architecture"

Open House '96 is a special pan-European event which aims to open buildings to the public, many of which are not normally open.

Admission is **FREE**.

Local openings include:

- **Centre for Understanding the Environment.**

Horniman Museum, 100 London Rd., Forest Hill.

Sat 14 Sept 10.30am - 5pm

Sun 15 Sept 2 - 5.30pm

"an innovative, environmentally friendly building by Architype. Completed Sept. '96"

- **Ecological self build house** Sunday 15th Sept

11am - 5pm. 11 Shaw Cottages, Perry Rise SE23 (opp. Gardlies Rd.)

"tree trunk structure supports turf over lofty family room. Built using sustainable principles."

- **Manor House Library** Sat. 14th Sept.

11am - 12; 2.30pm - 3.30pm.

Old Road, Lewisham SE13

House built 1772 for Thomas Lucas by Richard Jupp, architect.

- **St. John's Church, Lewisham Way**

Sat 21st Sept. 10.30 am - 12: tours of church and belfry.

1pm - 9.30pm: various other activities. Small admission fee.

Open House Weekend

14,15 September

A chance to visit interesting buildings not normally open to the public

Lee: The Swan pub to the Slipe - guided walk

Sydenham: Sydenham Common

St. John's Church, Lewisham Way

Full details available from Lewisham libraries in September.

CUE building, Horniman Museum

1-30 September

Combined exhibition by local amenity societies

Sydenham Society

17 September 7.45 pm

Illustrated talk on Dulwich Picture Gallery

CONTACT NUMBERS FOR "WHAT'S ON"

St Peter's Centre

Theresa Ancombe 693 8030

Ladywell Society

Sue Gore 692 4154

Lewisham Local History Society

John King 857 1819

Sydenham Society

Peter Lewis 699 4491

Nunhead Cemetery

Jeff Hart (0171) 639 1613

Rex Batten 693 6191

Lewisham Art House 694 9011

PLANNING APPLICATIONS

MAY TO AUGUST 1996

12 Chalsey Road

Erection of a temporary 1 and 2 storey building in the rear to provide a contractors' office.

2a Ashby Road

Demolition of the existing building and erection of a single storey workshop and garage and electricity sub station.

4 Darling Road

Refurbishment and installation of replacement windows at the rear.

3 Coulgate Street

Alterations to the front and rear and erection of a single storey extension at the rear.

2 Coulgate Street

Conversion to provide 2 2-bedroom houses together with alterations to the elevations.

199/201 Lewisham Way

Erection of a mansard roof to provide a 4-bed maisonette on the 1st & 2nd floors together with use of basement and ground floor as a restaurant.

21/23 Tressillian Road

Demolition of the existing boundary wall between the properties and erection of a replacement wall.

Wickham Building, Lewisham College,

Lewisham Way

Demolition of existing building and erection of 2 3/4-storey blocks comprising 34 2-bed flats and 6 3-bed units, a 4-storey block of 2 2-bed units, a 3-storey terrace of 14 2-bed, 7 3-bed and 1 4-bed house and 3 2-bed flats together with landscaping and parking. (This is a total of 67 units at a density of 81 habitable rooms to the acre).

TREE WORKS at:

184 Tressillian Road

2 Darling Road

103 Upper Brockley Road

Wickham Gardens.

23 Harefield Road

adj. to 72 Geoffrey Road

29b Manor Avenue

39 Breakspears Road

51 St. Margaret's Road

St. Peter's Vicarage

Hilly Fields

44a Tyrwhitt Road



ADVERTISEMENTS

Send finished hard copy (typed) to:
Nicole Livingstone-Smith
36 Manor Avenue, Brockley
London SE4

SIZES AVAILABLE:

Small	3.6 cm x 6 cm	£15
Medium	7.5 cm x 6 cm	£25
Large	12.4 cm x 7.6 cm	£40

CIRCULATION 4000
READERSHIP 8000

Send fee to:

Andrew Brown, Treasurer
Brockley Society
117, Tressillian Road, London SE4

all ads. must be prepaid

MIKIPRINT

Specialists in short-run printing of:
business & fancy cards, letterheads,
notepaper, promotional items, c.v.'s
wedding invitations.

Scanning, designing and laser printing.

Tel: 0181 692 8591



ESTATE AGENTS & VALUERS

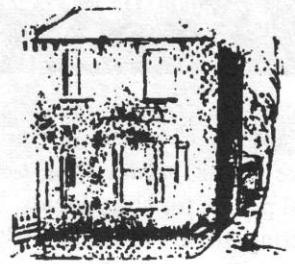
369 Brockley Road

Crofton Park, SE4 2AG

40 yards from Crofton Park Station

Telephone 0181 691 1516

Rocodells Estate & Lettings Agents



388 Brockley Road, Brockley, London SE4 2BY

0181-691 8731/0313

Call now for free valuation

WE SPECIALIZE IN

**THE BUILDING & RESTORATION OF
VICTORIAN ENCAUSTIC & GEOMETRIC**

TILED HALLWAYS & PATHS

FOR A FREE ESTIMATE, CALL:

0181 462 4912



LOCAL HANDYMAN

**CARPENTRY, DECORATING
GENERAL MAINTENANCE.**

NO JOB TOO SMALL

Ph. MARK KILEY

0181 692 2432



Natural Health Practitioner

Anthea Hope

B.Sc.(Hons), Dip.HN, ITEC, IFA
at the Sydney Fisher Clinic

81 Tressillian Road, Brockley SE4 1XZ

Tel: 0181 469 0898

*Nutrition Counselling / Dietary Therapy
Holistic Aromatherapy / Reflexology
Touch for Health / Swedish Massage (ITEC)*



**ST JOHNS
BABY & TODDLER
GROUP**

ST JOHNS
CHURCH, LEWISHAM WAY
(OPP LEWISHAM COLLEGE)
during term time only

WEDNESDAYS 10am - 12pm
THURSDAYS 10am - 12pm

clean, light friendly environment to meet
local people. Lots of toys, singing, parties
and painting. Tea & Coffee included £1.
Member of Pre-School Learning Alliance.
All Welcome.
Call 0181-694 1538 or just come along.

CLASSICAL OSTEOPATH

NEIL FENNEL

D.O. M.C.O. M.I.C.O.

registered Member of College of Osteopaths

Helping with pain and strains related to
occupation, posture & stress; help with
irritation of nerve roots causing pain and
disturbed functioning in the organs and
with digestion, breathing and circulation.

Also Reiki Healing

110 Geoffrey Road,

Tel: 0181 691 1051

Fees £20, Conc. £15

C.J.'s Property Maintenance & Repairs.

Builder, Carpenter, Painting & Decorating

Restoration work - Home Improvements

Landscape Gardening

Walls, Fencing, Patios, Paths & Ponds etc.

Exterior painting and repointing

Insurance work undertaken

Please ring Colin Brooks for free advice & estimates on

0181 695 6234

BROCKLEY SOCIETY

BARBECUE



The Society owns a very
large and splendid
barbecue.



You can hire it for the modest fee of £10 for the weekend.
Contact Bob on 0181 692 2289

GUITAR TUITION

Folk • Blues • Pop • Country

Beginners or improvers

Jaqueline Grant

0181 694 1409

Fee: £8 per hour

HEALING COUNSELLING

*David Evans BA (Hons) Cert Couns
(NFSH;BPS)*

*Spiritual, Psychological & Social
aspects of physical health, mental health
& addictions*

0181 692 3497