

BROCKLEY SOCIETY



Issue 76 March 1996
Charity No: 1004245

Delivered free to 4 000 households

HILLY FIELDS CENTENARY APPEAL

In 1896 money was raised by hundreds of local people giving anything from a shilling upwards to buy the land and make Hilly Fields Park for future generations.

We plan to celebrate the centenary of the park by contributing something ourselves, for the future generations. Brockley Society are trying to raise £14,000 to put railings around the picnic area by the Playground, to make it a safe dog and bike free zone for people to enjoy sitting on the grass. So far we have received £2,000 from Leathersellers (founders of Prendergast School), £1,500 from the Mercers' Company, and £350 from the Drapers.

We are waiting to hear from Citibank, Goldsmiths', the Bridge House Trust, and the National Lottery.

Do you feel inspired to contribute towards making the Park better for future Brockley people? If every household in Brockley gave £5 we could make the picnic area ourselves! We intend to keep a record of all donors and eventually to put a plaque up by the picnic area.(TK)

If you would like to send in a donation, please indicate below:

I enclose a donation for the Hilly Fields Centenary Appeal: (£5), (£10), (£25)

Name and address:

Make cheques payable to the Brockley Society and send to:

Andrew Brown, Treasurer
Brockley Society
117, Tressillian Road
Brockley London SE4

HELP! - BROCK SOC. FAYRE IN DANGER OF CLOSING!!!

We desperately need at least 3 more people to join our Fayre Committee and help us organise this year's fayre.

We are just beginning to plan this year's fayre and we really need to work extra hard to produce a truly spectacular event because Hilly Fields will have just celebrated its 100th birthday.

All we need from you is a couple of hours a month until June and the commitment to do some running around during June and to be there on the day. The situation is at crisis point; NO TEAM, NO FAYRE.

If you can help or would like to book a stall please contact 0181 692 8512 (OP).



PARK USERS GROUP



Anyone who is interested in the Park is welcome to come to meetings of Hilly Fields Park Users Group. There have been two meetings so far with about thirty local people and Frank Mason from the Council Environment Department.

The news until now is that the Council are

in the process of sorting out the Playground; the dangerous equipment has been repaired or removed, and we are expecting any day now a large and wonderful climbing frame in the shape of a train. Picnic tables have been installed next to the Playground.

In the next financial year, Frank hopes to

reorganise the footpaths and the toilets. Many people have said how nice it would be to have a tea shop at the top of Hilly Fields. Any ideas for organising this?

The next Park Users Group meeting is on Wednesday 20th March at 7.30 pm in St.Peter's Hall, Cranfield Road.(TK)



2ND ANNUAL CHRISTMAS CRAFT FAYRE



Our second Craft Fayre was considerably more successful than our first. We changed our venue to the Lewisham Arthouse which, because it is situated on a main road offered us the opportunity of capturing passers by.

We attracted nearly 30 stalls, including

several from the Arthouse itself and many stalls offered a very high standard of merchandise including paintings, woollen crafts, sculpture, terracotta pots, and greeting cards individually painted and despite rather dreary and cold weather we made a profit of £158!

We are planning to hold another Christmas Craft Fayre this year which we hope will be even better than the last. It's a very convenient way of supporting Brock Soc. and completing Xmas shopping at the same time! For more information regarding stall hire please contact 0181 692 8512.

BROCKLEY SOCIETY MEETINGS

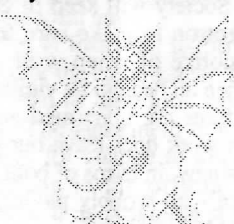
Venue: St. Peter's Centre, Cranfield Rd. Tel: 081-693 2030 Time: 8.00pm

3rd April 1996 • 5th June 1996 • 2nd August 1996 • AGM 2nd October 1996 • 4th December 1996

Please contact an officer from the list below if there is an issue which you would like to be raised, or come to one of the meetings, which are open to everyone



Vice Chair	0181 692 7869
Vice-Chair	0181 691 2751
Secretary	0181 691 1767
Treasurer/Advertising	0181 691 5659
Transport	0181 692 7869
Planning	0181 692 6977
Police Liaison	0181 691 1767



Editor & Production	0181 691 2751
Press & Publicity	0181 691 2751
Social Events	0181 694 8422
Fayre	0181 694 8422
Distribution	0181 691 1767
Environmental	0181 691 3096
Local History	0181 694 8422



The Brockley Society welcomes all - regardless of race, religion, gender, sexual orientation or physical disability

BOGUS WINDOW CLEANERS - BEWARE



An unscrupulous bunch of tricksters are operating in the area, claiming to be window cleaners. Their stories vary, but they may claim that an appointment for them to clean the windows had already been made by a flatmate/partner/other resident /owner etc. They say they have come to collect the money and that they will return to clean the windows on another day. Needless to say they never return. They may also ask questions about who is in our out, or when they can come back etc. **DO NOT GIVE THEM ANY MONEY OR INFORMATION BUT RING THE POLICE IMMEDIATELY.**

Brockley police suspect that they may also be "casing the joint", and that they may be responsible for the large spate of burglaries that have been occurring in the area recently.

BEWARE, TAKE CARE, RING THE POLICE AND WARN YOUR NEIGHBOURS AND FRIENDS IF THE CROOKSTERS VISIT YOU.(NLS)

ASHBY ROAD DEVELOPMENT TURNED DOWN

The Brockley Society with residents of Manor Avenue and Upper Brockley Road, got together to resist the proposed development of the old Gidney Rourke site in Ashby road, are delighted to hear that the application has been turned down. Several residents attended the meeting at the Council chambers, where Celia Mesure on behalf of the local community, presented the objections to the scheme.

The decision by the Council to turn down the application was based on the view that the proposed development was not in character and keeping with the area. Certainly, many residents felt that the felling of trees and construction of a 3 storey block of 10 flats at the end of our gardens, plus two 3 bed room houses and 15 car parking spaces was far from desirable.

Unfortunately just two days after the refusal of planning permission another developer approached the Brockley Society planning committee with a new development proposition. Aware of the local community's objections this developer was keen to smooth his path, and sought our involvement. We are currently reviewing a set of plans.

Broc Soc. is also waiting for the results of a survey of the site by the London Ecology Unit to ascertain whether the building is currently being used as a nesting place by bats. If it is, then the building will not be allowed to be pulled down, as bats are a protected species.

If you would like to know more about the proposed new development please ring 0181 469-3975.

TRENCH WARFARE - CABLE TV IN BROCKLEY

At the last Brockley Society meeting, the issue was raised of if, and when, cable TV was to reach our community. Several people spoke about the devastation of pavements and the power cuts caused by contractors severing electricity cables caused by the installation of cable TV in surrounding areas. The main concern in our Conservation Area is of the possible damage to the roots of the many mature trees that make our streets so pleasant. There are already regulations in place, as part of being in a Conservation Area, that control the putting up of satellite dishes. However, there do not appear to be any such restrictions in terms of laying cables under our pavements.

The Brockley Society has been in touch with Videotron, who have been licensed by the DTI to provide cable services to the Borough of Lewisham, to see what their plans are for Brockley. Videotron said that there are no plans to lay cables in SE4 for at least the next 12 months. The SE13 area, which is on the edge of the Conservation area, will be done during 1995.

Although residents are under no obligation to take the service directly into their property, naturally it affects us all as the cables will be laid in the pavements or road-

ways. Videotron explained that the procedure is to dig shallow trenches in the pavement or roadway to ensure that tree roots are not disturbed. The trenches will then be refilled and the surface replaced. They will ensure that all pavements are reinstated to look as neat as before, relaying paving stones or tarmac as necessary. Videotron assured us that they have a tree policy, and their contractors will hand dig around trees to make sure the roots are not damaged. The cable laying is contracted out to leading construction companies, who ensure that the work is carried out as quickly and as neatly as possible, and Videotron also have their own team of inspectors making sure this is done.

It is essential however, that we all keep a check on this, as the results of cable laying in other areas are all too obvious. The Brockley Society will keep in close touch with Videotron to make sure that we get advance notice of when work will start. We will then all need to be vigilant to make sure that trees are unharmed and that the restoration work does leave our pavements as good as new, in terms of both safety and appearance - no wobbly paving stones or patches of black tarmac!

UNFAIR PARKING TICKETS

Are you one of the local residents who has recently received a parking ticket from Lewisham Park Direct whilst only trying to park in your own street?

Ticket issuing levels are obviously not up to target for the Lewisham Team, as, not content with booking motorists who are genuinely causing an obstruction, or parking illegally in town centres or on major roads, they have recently been patrolling Brockley at 9am on Saturday mornings. Double parking, wheels on the kerb, or on a road restrictor, parking too close to a corner etc will all result in you receiving a £30-£60 fine.

Too many cars and not enough space is the problem. The situation is made considerably worse by the Council's own planning policies that allow developers to convert large houses into flats without making any adequate provision for parking.

The Brockley Society has taken the issue of parking space up with the Council's Highways team, but as yet there appears to be little progress. The more complaints they receive the greater the chance of action. Please send your letters direct to the Council and please send us a copy for our files, so that we can monitor the situation and further our campaign. (please forward your copy letter to 70 Tyrwhitt Road SE4)

If you feel that you have been unfairly booked for parking, consider fighting the order - several of us have been successful. Ring (0181 691 2751) for details(NLS)



Music Maestro! -The Lewisham Academy of Music

The Lewisham Academy of Music at 77 Watson St., Deptford is an extraordinary organisation which provides music tuition in the form of workshops for children and adults and is open to children from 4 to 5.30pm, Monday to Thursday and 7 to 9pm for adults except on Tuesday when it opens at 6 to 8pm for teenagers for Club 2000.

Instruments taught include guitar, piano, trumpet, saxophone, percussion, drums, keyboards and much much more! The Academy also offers studio recording courses on a 6 week basis as well as the opportunity to hire its professional 16 track studio for recording or programming work. All types of musical styles are catered for.

Tutors include Harry Beckett, Britain's foremost jazz trumpeter, Angele

Veltmeijer, one of London's leading saxophonists and the legendary drummer, Charles Hayward.

Fees are unbelievably cheap at £3.50 PER MONTH for children, £6 PER MONTH for students/unwaged (ID required) and £14 PER MONTH for the waged. For further information contact John Savage, Music Development Officer, 0181-691-0307.

Women and Music

Since 31st January the Academy has been running a Studio Skills Workshop for Women and a Vocal Workshop from 1to 3pm. A crèche is provided free of charge, so book now on 0181 691 0307 and ask for Sue Popper, Women's Music Development.

CHECK IT OUT!!

Caribbean Women Writers Alliance



If you are interested in the work of Caribbean women writers, wish to stimulate creative writing activity amongst women of Caribbean origin women, want to facilitate networking so as to put writers in touch with each other, review new writing and to develop a forum for debating Caribbean women's writing then look no further!

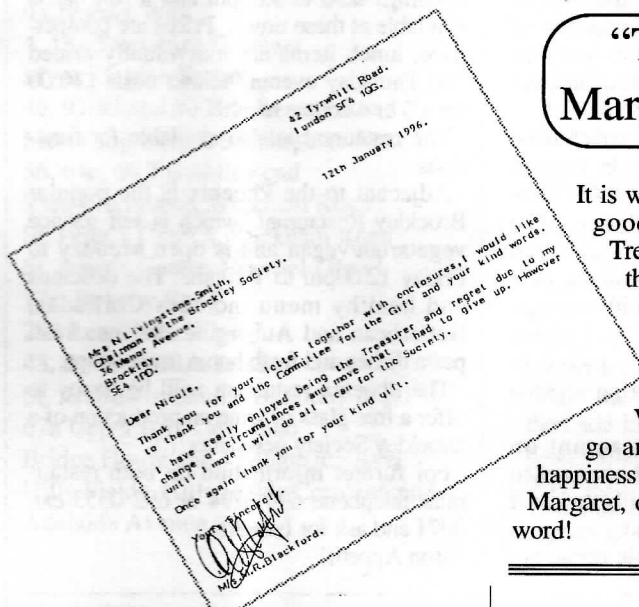
The Caribbean Women Writers Alliance meets every first and third Friday of the month and provides support for women writers. It also produces a termly newsletter called 'Mango Season'. If you would like to know more, please contact: Joan Anim-Addo, The Caribbean Centre, University of London, Goldsmiths' College, Laurie Grove (the old Public Baths), New Cross, London SE14 6NW or telephone: 0171-919-7171.

LET'S HELP EACH OTHER

Brockley has many local societies and organisations operating in the area. The Brockley Society would like to update its files with details of your organisation and activities so that we can work together in publicising events, services and/or functions.

We will send you a copy of our newsletter to keep you in touch with what is happening in the area. So if you run a support group, playgroup, special needs group, OAP centre, advice line, activity club, afterschool club, creche, nursery, playgroup, star riders, running club, Scouts, Brownies, pressure group, co-operative, car share scheme etc etc. Please let us know.

Ring Linda: 0181-692-7869



"Thank you" Margaret Blackford

It is with great regret that we all say goodbye to Margaret, our Treasurer, who has moved out of the area. Margaret has staunchly supported Broc Soc for many years as well as doing a superb job by providing us with accounting services. We will all be sorry to see her go and wish her much luck and happiness in her new home. Margaret, of course, should have the last word!

BUILDING BRIDGES -

BrocSoc teams up borough wide with other organisations

In a bid to strengthen local muscle power and provide a more cohesive network of resources, the Brockley Society has initiated the setting up of a forum for local conservation and amenity societies across the borough. Our aim is to improve communication, share our experiences, and be able to access and harness specialist resources for campaigning on major issues, as well as to provide a stronger and broader representation of public opinion.

This move has come about following the intensive and emotive planning applications that resulted in the development of the Savacentre at Bell Green, Sydenham, and Sainsbury's at New Cross. Sadly the nature of the planning process is such that public opinion hardly counts and to stand a chance of defeating or influencing the nature of such developments, a determined and coordinated campaign of lobbying and legal

objections as well as objections on the basis of planning law is required. As such the services of consultants, lawyers, lobbyists etc is required. No local conservation society or other local amenity society could possibly meet these costs, but luckily many suitably qualified people live in the Borough and are prepared to give their time to support such campaigns. For these reasons we need to be able to access these resources, even if they are not in the local area.

This forum is finalising its official name and agenda for the coming year, but the two meetings held to date look positive and promising. The agreement is to focus on campaigning for change to improve local representation in the official planning process, as well as providing support on a variety of smaller, more local applications. Longer term it is intended to look at topics such as local stations and parks. (NLS)



CALLING ALL VOLUNTEERS!

Why not give one of the Brockley Society team a call (telephone numbers are on the front of the newsletter) and get involved in improving your local community.

Our work is fun, rewarding and there's never a dull moment!. Give whatever time you can, we will certainly make use of it!!!! Here are some comments from some of the people who have benefited:

"I moved to Brockley from Australia in 1994. Through the Brockley Society I have got involved in many local projects and made plenty of friends who all live locally".
H. Davis

"I do not have much spare time now, but the day helping at the Summer Fayre is always great fun". J. Wolf (NLS)

The Phoenix Restaurant - Lewisham College



Free Glass of Vino!



There's a restaurant in Lewisham that is a revelation! It's called the Phoenix Restaurant; it can be found in the Breakspear's building in Lewisham College and has been featured in the Royal Academy Summer Show and was one of the best industrial designs of the year (94/95) - the Caterer and Hotelkeeper Magazine.

As well as an extensive and varied wine list a typical menu would include Tomato Fettucini with Monkfish, Tomato, Almonds and Basil as the first course. This could be followed by Feuilletée of Chicken Bourguignonne served with sauteed new potatoes and batted carrots with tarragon or for vegetarians, Rolled Buckwheat Pancakes with Leek Peppers, baked in Quark, a choice of mouth-watering desserts and tea or coffee.

We had dinner in the restaurant on Thursday evening and found the service to be attentive and courteous with the staff doing all that they could to make sure you had an enjoyable evening. This restaurant

certainly rivals many excellent restaurants in the area and in central London.

The Restaurant is open for lunch Tuesday to Friday 12.00 to 1.30pm and on Thursday evenings 6.30 to 9.00pm and a full bar is available at these times. Prices are competitive, lunch items are individually priced and Thursday evening dinner costs £10.00 for a 3 or 4 course meal.

The restaurant is also available for functions.

Adjacent to the Phoenix is the popular Brockley Restaurant which is self service vegetarian/vegan and is open Monday to Friday 12.00pm to 1.30pm. The delicious and healthy menu includes Chilladas, Butterbean and Aubergine Biriana, fresh pasta dishes and fresh home made soups.

The Phoenix restaurant will be happy to offer a free glass of wine on production of a Brockley Society newsletter!!!!

For further information on both restaurants telephone 694 3294 or 692 0353 ext. 3071 and ask for Isabelle.

Bon Appetit!

Brockley Services Directory - Second Edition!!!!

The Services Directory the Brockley Society produced last summer has been a great success. We have had positive responses from people who have used the Directory to find services and also from suppliers of services - some of them reported being snowed under with work! So we have decided to produce an updated, bigger and better second edition.

We are looking especially for services which are not obviously available. Not just shops but baby-sitters, dog walkers, gardeners, accountants, handymen (and women!), dressmakers, secretarial services etc. If you can provide a service to your neighbours we would like to hear from you. If you had an entry last year please let us know if you would like to renew.

For the 1996 edition we would like to pro-

duce a glossier and bigger version and to circulate it more widely. To finance production we are therefore asking for a fee of £5 for each entry. This means we can produce a bigger directory and more copies, which we plan to circulate not just to every home that gets a copy of the newsletter but also through other outlets outside the Conservation Area. £5 is a small sum to pay for 12 months advertising in a directory which people refer to throughout the year - Brockley's answer to Yellow Pages at a fraction of the price!

If you want to renew last year's entry or put in a new entry in please send your details with a cheque for £5 (made out to 'The Brockley Society') to: Brockley Services Directory, c/o 26A Chalsey Road, Brockley, London SE4 1YW.(LB)

HILLY FIELDS USERS GROUP

Following on from other parks, and in conjunction with Lewisham Council, Hilly Fields has established a Users Group through which we are trying to resolve the current problems of Hilly Fields.

Two meetings have been held so far with strong support from local residents. A new train will be provided for the playground and discussions are being held over dog-free areas.

For those who are interested, the next meeting will be held at the St Peter's Centre at 7:30 pm on 20 March 1996. If in the meantime you would like to receive more information about the group, please call 0171-691-1767.



UPDATE ON THE EAST LONDON LINE

*as reported by the Telegraph Hill
Conservation Society*

The Underground Service from New Cross Gate was temporarily closed down in March 1995 so that a new station for the Jubilee Line extension could be built at Canada water, adjacent to Surrey Quay station, and some extensive refurbishment work carried out to the existing East London tunnel under the Thames.

The work to the tunnel was claimed to be necessary by London Underground to prevent water ingress, but caused widespread opposition from eminent civil engineers and historians whose own inspections concluded that the work which would result in coating the tunnel walls with concrete and obscure the original brickwork was unnecessary.

The tunnel is of considerable interest historically as it was the first to be built under a river anywhere in the world. After reference to the Secretary of State for the Environment and consideration of the historic structures implications by the London Dockland Development Corporation (the local planning authority) approval has now been given, although there are still dissenting voices.

At a recent meeting on transport issues in London, the Chairman of London Transport Peter Ford said that he did not expect the East London Line to be open before June 1996 - even that now seems optimistic. London Underground plans to extend the East London Line to East Dulwich via Peckham but, under present ideas, this would be a branch line spurring off at Surrey Quays. What happens to the last section of the line to New Cross Gate is not clear and there are rumours from LT staff that this may in fact be closed down. Watch this space or seek assurances from London Underground if you value your East London service.



SEPTEMBER 1995 to JANUARY 1996

1 Wickham Gardens

The erection of a 3' high fence above the existing boundary wall to the side together with a gate to provide access to the rear.

76 Tyrwhitt Road

Erection of single storey extension at the rear, enlargement of existing dormer to the rear and a new dormer to the side roof slope.

183 Brockley Road

Change of use to a cafe/restaurant. Also installation of a new shop front.

LEA House, Lewisham College

Listed building consent for internal alterations.

283 Brockley Road

Second and third schemes for erection of 13 2-bed houses and 2 2-bed flats on site.

181 Breakspears Road

Demolition of garages and erection of 1 2-bed and 1 4-bed 3 storey semi-detached houses with parking spaces and vehicular access onto Breakspears Road.

246 Malpas Road

Alteration to shop front.

21 Wickham Road

Alteration of ground floor to provide 1 1-bed and 1 2-bed flat.

58 Breakspears Road

Erection of single storey extension to the rear and two storey extension to the side.

Top Flat, 102 Tyrwhitt Road

Erection of a dormer window in the rear roof slope.

Brockley Filling Station Site, Brockley Road

Details of landscaping.

92 Breakspears Road

Conservation Area consent for demolition of chimney stack on the side roof slope.

Adj 33 Crescent Way

Alteration of storage/garage building to provide a 4-bed house with garage at side.

168 Lewisham Way

Listed building consent for replacement roof.

31 Crescent Way

Erection of a conservatory at the rear and change of integral garage to a study.

r/o 22 Wickham Road

Use of building in mews as a grinding workshop.



TREES

9 Crescent Way

4, 15a Tressillian Crescent

Myatt Garden School

46, 91/93 and 93 Breakspears Road

Mews adjoining 2 Breakspears Road

56, 64c, 66 Tyrwhitt Road

Veronica House, Wickham Road

St. Peter's Church, Wickham Road

St. Peter's Centre, Cranfield Road.

17a, Rokeby Road

289 Lewisham Way

43, 51 Tressillian Road

St. Andrew's Church Brockley Road

67a Upper Brockley Road

Bridge House and 1 Montague Avenue

Hilly Fields, Hilly Fields Crescent and

Adelaide Avenue edges.

Broc Soc will be starting a series of cut out and keep recipes revealing some of the world's best kept culinary secrets! If you would like your favourite recipe published, please send it to the editor.

In case you had not noticed, it's been quite cold recently and a nice warming soup is just the thing for a cold winter's day. Please note that it is not available in supermarkets, who shall all remain nameless!!!! Here's a soup to warm parts that other soups cannot!!

TURKEY CHILLI SOUP

This soup is suitable for Vegetarians if they omit the meat and include more vegetables and pulses.

Ingredients

- 1lb minced turkey (or chicken)
- 1 large can kidney beans (or beans of your choice)
- 1 can chopped tomatoes
- 1 small can tomato juice
- 2 cloves of chopped garlic
- 1 large bell pepper
- 1/2 tsp cumin
- 1/2 tsp chilli powder
- 1/2 tsp cayenne pepper
- 2 small onions - roughly chopped
- Salt & pepper

Method

Chop green pepper, onions and garlic and set aside.

Brown turkey in a large pan - set aside.

In a separate pan saute onions, bell pepper and garlic until soft.

Add the vegetables to the meat and then add kidney beans, chopped tomatoes, tomato juice and spices, salt and pepper.

Simmer on a low heat for 30-45 mins. Serve with crusty bread.

POLICE & THE COMMUNITY

BROCKLEY POLICING

News was given at the Brockley Sector Working Party recently about proposed changes to the shift arrangements for the Lewisham Police. Chief Superintendent Chapman, of Lewisham Police Station, attended the meeting to explain these proposed changes personally.

Due to ever tightening budgetary constraints, which are affecting the Metropolitan Police Force as a whole, it has been proposed that the front desks at both Brockley Police Station and Lee Road Police Station would be closed at night and, possibly, on weekends.

The advantages of this strategy, according to Chief Superintendent Chapman, would be to allow more police officers out to work in the community at these times. He

stressed that these changes would not mean the closure of either police station, merely a change in how they were organised.

The disadvantages of this scheme are that the Police Station would not be open to public access during the hours when the front desk was not functioning. Members of the public would obviously be able to telephone the police but the station itself would not be available.

While one would not wish openly to dispute Chief Superintendent Chapman's comments, it was the concern of the members of the Sector Working Party that this was the beginning of the slow but inevitable road towards the closure of the Brockley Police Station.

There will obviously have to be a change

in the housing of the Police Force when the new site, on the old Army & Navy premises in the centre of Lewisham, is built (currently due to be completed in 1999). This would remove our police officers from having a physical presence in the area and, perhaps, make it more difficult for the community to continue to be as actively involved as they are at present.

These proposed changes will be discussed at a forthcoming Sector Working Party meeting to be held on 13 March 1996, at 7:00 pm, at the Brockley Social Club. This is a public meeting and anybody wishing to express their views on the future of Brockley Police Station would be more than welcome.

WHAT'S ON

St Peter's Centre, Cranfield Road, SE4

Regular events:

- Children's Dance Class
Tuesdays 4pm - 5.30pm
- Body Conditioning
Tuesdays 7.30pm
- Dog Training
Wednesdays 7.00pm - 10.00pm
- Step Aerobics
Thursdays 7.00pm

Other events:

Saturday 9 March 2.00pm:
Jumble Sale in aid of St Peter's Church

Saturday 20 April 11.00am:
Jumble Sale in aid of St Peter's Centre

Lewisham Art House

- Exhibitions
Wednesdays - Saturdays
11.00am - 6.00pm
Admission free
 - ★ 21 February - 17 March
7 - Ways' exhibition by 7 artists
 - ★ 20 March - 7 April
Artability
Group show by Lewisham Voice
 - ★ 10 April - 28 April
Eutopia 2000
Neil Bromwich and Zoe Walker
 - Yoga
Donation Appreciated
Thursdays 1.00 - 2.30pm
Tuesdays 6.00 - 7.30pm
 - 'Easter Fun' Children's Programme
Tel 0181 694 9011 to book
 - Tuesday 2 April 10.00am - 12.00pm
Pottery
 - Tuesday 9 April 10.00am - 12.00pm
T-shirt printing
- ## Sydenham Society
- 23 April 7.45pm
Venner Hall, by Sydenham Station
National Rivers Authority - illustrated talk
 - 19 May 11.00am
Walk along Poole River
Meet by park entrance by
Savacentre, Bell Green
- ## Lewisham Local History Society
- 29 March 7.45pm
Salvation Army Hall, Albion Way SE13
Croydon's New Museum - the first year
Illustrated talk
 - 26 April 7.45pm
Salvation Army Hall, Albion Way SE13
The Lewisham Theatre - illustrated talk.

FROM THE EDITOR.....



We have had enquiries from residents in Brockley wishing to submit articles on points that may be of benefit to the community. If you have an article, recipes, puzzles, games etc that you would like to see published and are of interest to the community as a whole, please send it to:
The Editor
at
Walkford,
30 Rokeby Rd,
Brockley,
London SE4
or E-mail :

walkertj@vax.sbu.ac.uk.

Cut off date

10th May
2nd September
1st November

Publishing date

June 96
October 96
December 96

THANK YOU TO BROC SOC TEAM

To all the Broc Soc team who edited the last two newsletters while I was away - Thank you! (Jacqui)

HOW TO SUBMIT AN ARTICLE



If you would like to submit an article to the newsletter, please send the article on a disk that is readable by the AppleMac (we have PC Exchange software) as well as a printout of the article. The disk will be returned to you.
Please help us to keep costs down by enclosing the appropriate postage for return. Many thanks.

ADVERTISEMENTS

Send finished hard copy (typed) to :
Jacqui Beckford (Editor),
at Walkford, 30 Rokeby Rd,
London SE4 or E-Mail:
walkertj@vax.sbu.ac.uk

SIZES AVAILABLE:

Small	3.6 cm x 6 cm	£15
Medium	7.5 cm x 6 cm	£25
Large	12.4 cm x 7.6 cm	£40

CIRCULATION 4000
READERSHIP 8000

Send fee to:

Andrew Brown, Treasurer
Brockley Society
117, Tressillian Road
Brockley
London SE4



HOLY WEEK AND EASTER AT ST PETER'S, BROCKLEY

St Peter's is your local Church of England Parish Church in Wickham Road. You are very welcome to join us for some or all of the following services over the Easter period as we celebrate the Resurrection:

PALM SUNDAY

MARCH 31st

10.30am Procession on palms with Holy Communion

HOLY WEEK

MONDAY APRIL 1st - THURSDAY APRIL 4TH

Between 7.30-8.00am and 7.30-8.00pm each day the church is open for quiet prayer and meditation led by our staff.

GOOD FRIDAY

APRIL 5th

10.30am Joint Family informal worship at Brockley Baptist Church, Rokeby Rd, with congregations from St Peter's, St John's, St James, St George, St Michael and Ichthus Christian Fellowship.

2pm at St Peter's - a quiet hour of prayer and meditation on the Passion of Christ.

EASTER SUNDAY

APRIL 7th

10.30am Easter Celebration and Family Communion.

For further details ring the Vicar: -

Rev Tim Harper on 0181 691 3334

or the Curate: -

Rev Bimbi Abayomi-Cole on 0181 469 0898.

NEW ADVERTISERS

Please remember to get your copy to us in good time for the next issue, along with any pictures or logos you may want to use.

Natural Health Practitioner

Anthea Hope

B.Sc.(Hons), Dip.HN, ITEC, IFA
at the Sydney Fisher Clinic

81 Tressillian Road, Hilly Fields,
Brockley SE4 1XZ

Tel: 0181 469 0898

*Nutrition Counselling / Dietary Therapy
Holistic Aromatherapy / Reflexology
Touch for Health / Swedish Massage (ITEC)*

CAKES DIRECT

ORGANIC CAKES DELIVERED
TO YOUR DOOR

Favourites include:

Classic Carrot
Banana Manana
Jumping Ginger
and
Cracking Carob

Telephone: **0181 691 2751**
for further details

**To Us, Hand Beauty
Is More Than An Art.
It's A Science.**

A few lucky women are born with strong, beautiful nails. The rest of us need a little extra help. Our salon specialises in the art of nail design, using the finest quality products from Creative Nail Design Systems. The results are nails so light, thin and healthy looking, you don't even need to wear nail polish.

If you long for nails that won't split, break or look "fake" call us today for an appointment.

And let us give you just the right Creative touch for healthy looking nails.

Naturally
Fingers & Faces
BEAUTY SALON
1st floor
361 Lewisham High Street
0181-690 0997

CREATIVE NAIL DESIGN
S·Y·S·T·E·M·S™

Fingers & Faces Beauty Solarium

A Healthier Feeling You • A Better Looking • You A Happier You

Health, Nutrition, Beauty, Slimming, Facial & Body Treatments, Aromatherapy, Manicures, Pedicures, Makeovers, Waxing and Tinting and the No.1 Winner of All: **Nail Extensions:**

SOLARNAIL by Creative Nail Design Systems

For top to toe beauty treatments telephone 0181-690-0997 or come along to 1st. Floor, 361 Lewisham High Street.

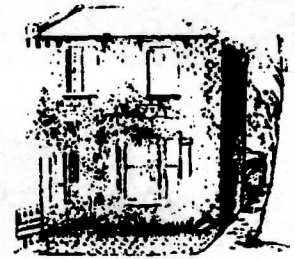
MIKIPRINT

Specialists in short-run printing of:
business & fancy cards, letterheads,
notepaper, promotional items, c.v.'s
wedding invitations.
Scanning, designing and laser printing.
Tel: 0181 692 8591



SAXTON & Co.
ESTATE AGENTS & VALUERS
369 Brockley Road
Crofton Park, SE4 2AG
40 yards from Crofton Park Station
Telephone 0181 691 1516

Rocodells Estate & Lettings Agents



388 Brockley Road, Brockley, London SE4 2BY
0181-691 8731/0313

Call now for free valuation

Household Insurance

Special rates for
Building & Contents in
the local area.
Discounts for over 50's
Monthly Payments available
Call in or telephone

Stewart & Partners Insurance Services

148 Lewisham Way
Tel: 0181-692-9725/6

St. Peter's Centre,
Cranfield Road.
Hall for hire

0181-693 8030

SIGN CONCEPT

The One Stop Sign, Screen and Printing Shop

Illuminated and Non Illuminated Signs
Window Displays
Pre Spaced Vinyl Lettering
Shop Fascias
Sun Blinds
Awnings

Visit our showroom at
183 Lewisham Way SE4
TEL: 0181-692 7755

QUALITY SIGNS AT REALISTIC PRICES
Happy to support the Brockley Society

LOCAL HANDYMAN

**CARPENTRY, DECORATING
GENERAL MAINTENANCE.
NO JOB TOO SMALL
Ph. MARK KILEY
0181 692 2432**



CLASSICAL OSTEOPATH

NEIL FENNEL
D.O. M.C.O. M.I.C.O.

registered Member of College of Osteopaths

Helping with pain and strains related to
occupation, posture & stress; help with
irritation of nerve roots causing pain and
disturbed functioning in the organs and
with digestion, breathing and circulation.

Also Reiki Healing

110 Geoffrey Road,
Tel: 0181 691 1051

Fees £18, Conc. £12

C.J's Property Maintenance & Repairs Service

Builder, Carpenter, Painting & Decorating

Restoration work - Home Improvements

Landscape Gardening

Walls, Fencing, Patios, Paths & Ponds etc.

Exterior painting and repointing

Insurance work undertaken

Please ring Colin Brooks for free advice & estimates on

0181 695 6234

ABBOTTS

**Antique & Country Pine
Furniture**

Purchased and Sold

0181 699 1363 0181 699 5729

K.J. BUILDING SUPPLIES

0181 692 9187

OPEN SEVEN DAYS A WEEK

BEST PRICES IN THE AREA

Suppliers of all Building Materials and DIY requirements
Professional advice given
SUPPLIERS OF BATH SUITES, ELECTRICAL, TOOLS, PAINTS,
BRASSWARE, HARDWARE, CONTIPLAS, SOIL & WASTE ETC.

55 LOAMPIT HILL, LEWISHAM, SE13