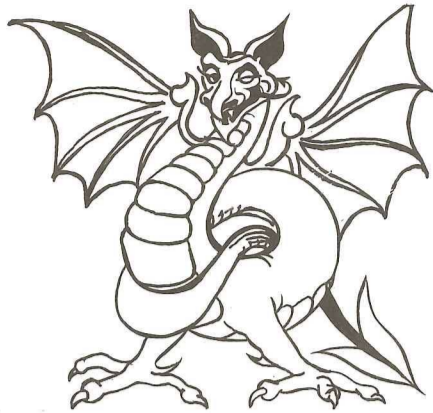


# BROCKLEY



# SOCIETY

NEWS SHEET No. 28

DELIVERED FREE TO OVER 3,000 HOUSEHOLDS IN THE BROCKLEY CONSERVATION AREA

November 1981

## HILLY FIELDS

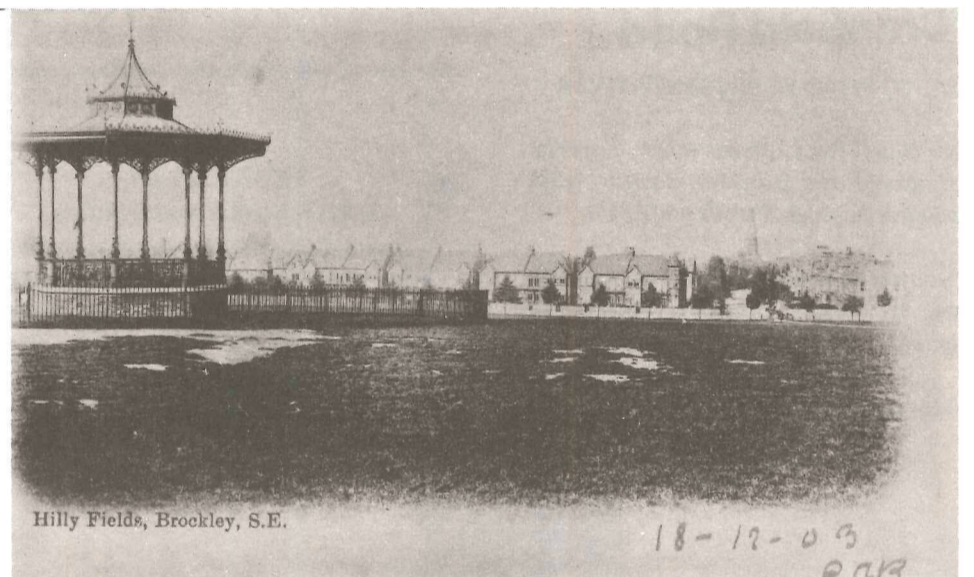
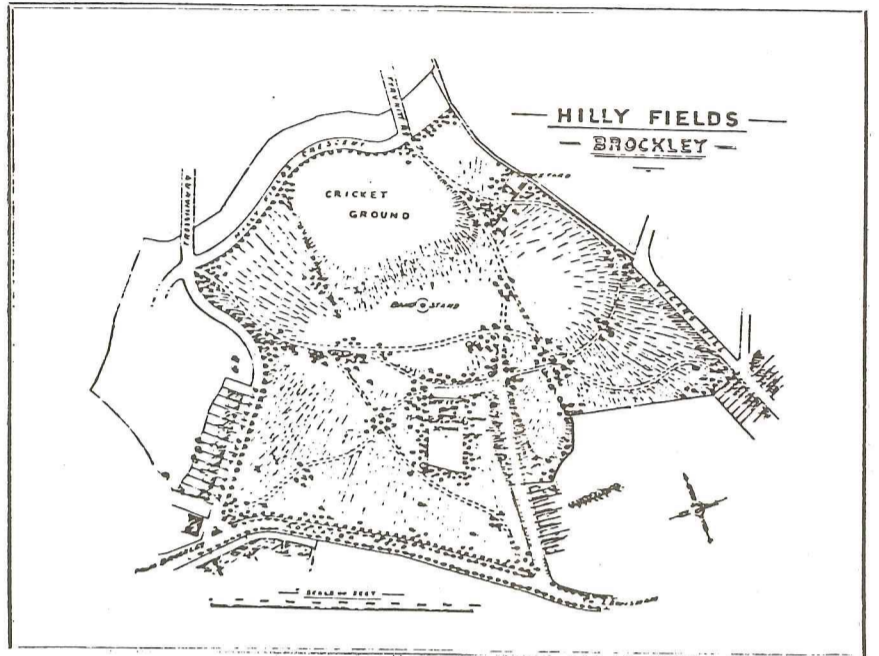
### Local History

Our densely populated corner of London has few parks but we can at least enjoy Hilly Fields. Like practically everything else in Brockley, we have our Victorian forbears to thank for this.

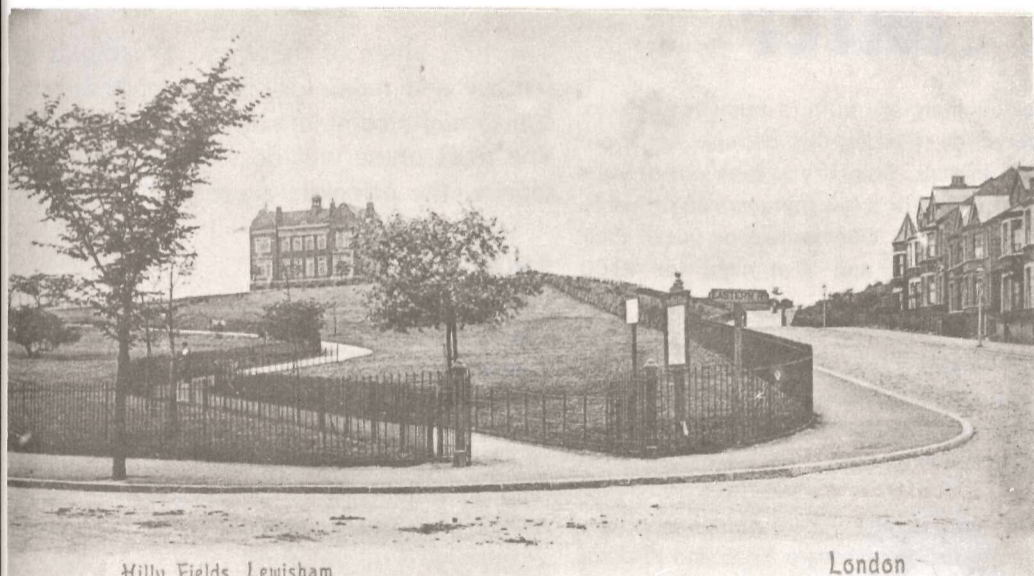
During the wave of building that swept across south London in the middle of the nineteenth century certain far-sighted philanthropic individuals and groups realised that it was essential to preserve pockets of open space for the health and sanity of the expanding population. Partly with private money and partly by pressure on local authorities the great commons of Clapham, Wandsworth and Streatham and various smaller areas were gradually purchased for the people. This process had become well established by the time developers were threatening to snap up what remained of rural Brockley.

The area concerned, now Hilly Fields, consisted of three plots. The largest, formerly known as "Shoulder-of-mutton field" but by then mainly brickfields, was the area leading down from the central ridge to Hilly Fields Crescent. Another area, lying to the east of what was then West Kent Grammar School and with a frontage to Vicars Hill, formed part of the glebe of the vicar of Lewisham. The remaining land to the south was part of the Bridge House estates, an ancient fund for the maintenance of London, Southwark and Blackfriars' bridges.

In 1888 a group of local worthies proposed that London County Council should purchase the whole area so that it could become a recreation ground. However, although the LCC had previously pronounced the site to be "the most eligible for a park in the neighbourhood of London", they were only willing to foot half the bill. As a developer planned to build on the Bridge House land the group had to act speedily and they enlisted the help of the Commons Preservation Society and the Metropolitan Public Gardens Association to find the rest of the money.



Hilly Fields, Brockley, S.E.



Hilly Fields, Lewisham

Lewisham



A Joint Committee was formed to raise the £21,000 required in equal proportions from the District Boards of Greenwich and Lewisham and from private sources. Greenwich volunteered their third almost immediately but Lewisham took the view that, as the scheme would benefit the whole of south east London, the LCC should meet the full cost. Undaunted by this blow the Committee immediately increased their efforts to attract subscriptions. They engineered an article in "The Times" on 4th January, 1882 expressing concern at Lewisham's niggardly attitude and drawing attention to the need for donations. Octavia Hill, the social reformer and slum clearer, also used her influence to attract money. The campaign produced £2,500 from local charities and £9,000 from private subscriptions, principal among which were £1,045 from various City Livery Companies and £300 from the Duke of Westminster.

As soon as the Committee's funds topped £17,700 the LCC bought both the larger parcels of land. However, the balance of the money they had set aside was insufficient to purchase the glebe.

A last appeal was made to the Lewisham Board who, realising that the creation of Hilly Fields was inevitable, relented and gave £2,800. With this there was now enough to pay the Ecclesiastical Commissioners the £1,000 they had sought for each acre.

Upon obtaining possession of the whole of Hilly Fields the LCC filled in the disused pits on the brickfields to make a cricket ground and erected boundary railings. Apart from these works however, the area was left in its natural state and the LCC were therefore able to open the park to the public soon after on 16th May, 1884. Even the representative of Lewisham Board present at the ceremony expressed great enthusiasm and went as far as to suggest that the surrounding hill tops should also be acquired. Six years of campaigning by local people had at last come to fruition.

**SAXTON & CO.**  
ESTATE AGENTS AND VALUERS  
369 Brockley Road  
Crofton Park  
London SE4 2AG  
Tel. No: 691-1516



# AGM

Annual General Meeting  
Wed. 21 Oct. 8pm

# Brockley Society

THE BROCKLEY SOCIETY IS NOW 8-9 YEARS OLD

# FAYRE

The Hilly Fields Fayre was once again a great success! Even the sun shone from time to time, and a thoroughly good time was had by all. The Mayor of Lewisham, Councillor Tom Bradley, and Mrs Bradley kindly joined us for part of the afternoon, and judged the fancy dress, Liberty horses, Mary and her Little Lamb, a bunch of grapes, Asterix and Obelix, robbers, Russian Spies, Noddy, bunny girls, it was difficult to choose from the imaginative entries. The festivities were as always, many and varied, mouth watering cakes and sweets, fascinating bric a brac, erudite books, sturdy plants; you could chomp your way through sizzling hamburgers, ride on the donkeys, shiver in the house of horrors, try your skill at trap a rat or hoopla, look at the gleaming fire engines or chance your arm on the tombola.

# thank you

Our local Traders are loyal and generous supporters of the Hilly Fields Fayre. We are extremely grateful to them for their generous contributions.

- Brockley Road Post Office
- Asik Dry Cleaners
- W. Drummie
- Kingstons the Butchers
- Mc Goldricks Newsagents
- Matthews the Butchers
- Wavy Line Supermarket
- Brockley Floral Depot
- Catholic Bookstore
- Croydon Silencers
- Anglo Irish Stores
- Sewells Newsagents
- Turners Stores
- Lieberman the Chemist
- Tyrwhitt Road Tailors

Also many thanks for help to Brian Whitty and CW Carpentry, and to Ian Middleton.

## St PETER'S

### ST. PETER'S PRESERVATION FUND

Fresh from his victory in the second all comers slow bicycle race at the fayre, David Graham has been tackling the St. Peter's appeal with vigour. The fund now stands at £15,755, only £64,000 to go.

In the last few weeks, collectors for the fund have been visiting homes in the area to swell the coffers. If you have been away, and have missed your collector, all contributions will be welcome at St. Peter's Vicarage, Wickham Road. The nett sum raised after expenses by the house to house collection was £1,100.

The first phase of the work, which was to remove and repair dry rot damage is now substantially complete at a cost of £13,230. The next phase will be to tackle the roof repairs, the principle cause of the dry rot.

### PROGRESS REPORT

We are glad to report that the structure is no longer menaced by dry rot. The specialists have completed their work of cutting out and replacing all damaged parts of the roof and vestry area. The cost has come to many thousands of pounds, but, thanks to the efforts and contributions of - amongst others - the people of Brockley, the bills have all been paid.

Now we need to raise more money to tackle other urgent repairs, in particular the complete overhaul of the roof. The Preservation Group is therefore launching a series of monthly fund raising events which we hope the Community will support. The details of these will be circulated each month.

I wish to purchase any of the following pre 1930 items:

- Wardrobes, Sideboards, Bookcases
- Display Cabinets, Dining Tables,
- China, Brass, Tiles, Bric-a-Brac

ANYTHING OLD AND INTERESTING

Phone Ian Middleton 01 - 692 - 2845  
write 91 Tyrwhitt Road, London SE 4

We are grateful to all of those who helped to make the day such a success, perhaps especially the boys of Roger Manwood school who entertained us with the Steel Band, thank you, please come again.

While it would be impossible to mention all of those by name, all of those who helped to organise, we would like to say a special thank you to Diana Warren for arranging the outside stalls, and to Freda and John Porter for their super efficient efforts in managing the Brocsoc stalls. To them, and all of you, thank you very much, thank you very very very much. Apart from all the fun we had, we also made a record £500 or so to be used for your benefit in the next year in the conservation area.

## letter

In Brockley there are quite a number of foxes. Not everybody realises this because foxes are nocturnal animals. Even if you look out of your window at night for a few minutes you probably wouldn't see a fox. One has to look out of their window between 1 and 3 at night for 40-60 minutes to see a fox.

But what would a fox eat in a city? Well it would eat worms, rats and mice. Sometimes foxes raid dustbins for food but it is usually cats that overturn dustbins.

The roads that foxes are most numerous on are Tressillian Road, Breakspeare Road and Wickam Road and the roads that lead off these roads. They also visit Hilly Fields Park quite regularly the railway embankment that runs through Brockley is also a good place to find foxes.

Foxes shouldn't really be put down as pests as they can't harm humans and dogs, and though they cannot kill them and if a fox does give a cat an injury it's hard to notice in fact cats harm foxes more than foxes harm cats. And if you're worried about hedgehogs being killed by foxes well foxes don't eat them because of their spines, so foxes have no need to kill them.

Yours sincerely  
Master D. Dass - Age 13

The Society is at its healthiest when there are lots of active members contributing new ideas and ways of achieving them.

Many of the current officers of the Society have been involved since its birth.

The Society would benefit enormously by the injection of new ideas, people and direction.

The officers of the Society are elected annually at our Annual General Meeting and we would consider it a VERY HEALTHY situation if as many as possible of the newly elected officers were either new faces or people who have not done the job before.

Officers to be elected include Chairperson, Vice-Chairperson, Treasurer, Secretary and Trustees.

Other jobs in the Society include Newsheet editorship, and representatives on the Conservation Advisory Committee (an advisory group to Lewisham's Planning Committee).



**ROCODELLS**  
Estate Agents and Valuers  
Specialising in Residential Sales  
have constant enquiries locally and nationally for houses/flats/maisonettes  
388 BROCKLEY ROAD, SE4 2BY  
Tel: 01 691 8731 ANYTIME  
Associated Office in Dulwich

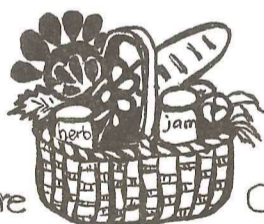
## St. Peter's Centre Cranfield Road

### NOTICE TO ROAD REPRESENTATIVES

Could all Road Reps. please make a special effort to attend the Brockley Society AGM on Wednesday, October 21st (8 pm).

Also, if you are moving out of the area, please remember to notify Brockley Society so a replacement can be found.

Maureen Mayers (691-1354)



10 to 5  
St. Peter's Centre  
7th Nov.  
Cranfield Rd. SE4.

## Brockley Community Market

- jam chutney
- bread cakes
- Jamaican patties
- home-made wine
- honey goat's milk & yogurt
- cheese herbs
- vegetables
- plants cuttings
- flowers home-made cosmetics
- jewelry clothes
- knitting quilting
- weaving toys
- embroidery

The Brockley Society want to bring the village to the city by having a Community Market in Brockley. The idea came from the Community Market in Dulverton in Somerset. When it first opened a few people called in - a year later it was so crowded you could hardly get in the door. Ours will be held in the St. Peter's Centre on the first Saturday of every month - a market to sell your hand-made work and for you to buy home-made goods in friendly surroundings. We shall serve tea and cakes. If we make a little money we would like it to go towards improving the Brockley Conservation Area - making it a nicer place to live in.

- patchwork
- leatherwork
- crocheting
- candles
- woodwork
- hand-painted furniture
- pottery
- hand-made paper & cards
- drawings
- paintings
- screenprints
- poetry hand-made notebooks
- and much more

Stalls available for individuals or groups of individuals. Just come along or phone - 691 3911 or 692 1153