



## The Brockley Society in 1980

### A LETTER FROM YOUR NEW CHAIRMAN

*As the Broc Soc enters its seventh year and we all approach the beginning of a new decade here are a few thoughts about us and the neighbourhood.*

*This is your area. We are your Society. The Broc Soc exists to help maintain and improve the streets in which we live. We want to preserve the bulk of buildings and to help develop the social life of the area.*

*You, the residents of the Conservation Area, are all free members of the Society. Through the Society, as a road representative, as a volunteer in a project, by attending public meetings or through this newsheet, your voice can be heard and made more effective.*

*The Council informs the Society in advance of all planning applications made within the Conservation Area. The Society sits on an advisory Planning Committee and can make proposals about the area.*

*In the same way it has a seat on the Lewisham Passenger Transport Users' Committee. Thus we are informed about changes in public transport affecting the area.*

*The Broc Soc is an effective voice, for you, the residents of Brockley. Look around you, look at the forecourt scheme in Upper Brockley Road, the pedestrian crossing at the bottom of Wickham Road, the trees planted recently in several streets, at St. Peters Centre, now a thriving community hall, and you can see a few of the real results we have achieved.*

*Where are we going,*

*A major concern of many people is the amount of traffic in and through the area. The Council has asked for ideas. We plan to hold meetings and make proposals on your behalf. We need to know what you want, so let us know.*

*The inadequacy of public transport is still a major concern, we will renew our efforts for better services at St. Johns and Brockely SR stations. We also want to see more regular and convenient bus services, so let us know what you want.*

*Lewisham Way is a major traffic route and a minor shopping area. Can we do anything to reduce the effects of the traffic and improve the local shopping facilities, We think we can, but let us know what you think.*

*Apart from these serious subjects, we hope, during the course of the next year to hold another Midsummer Fayre and to publish this newsletter. I am looking forward to an interesting year, I also look forward to your support.*

*Yours sincerely,*

*Julian Oliver*



## LOCAL HISTORY

Brockley is partly in Lewisham and partly in Deptford and according to early records has always been so. Although it was called a mediaeval "manor" no record exists of the holding of any Manor Court, and the inhabitants of the Lewisham portion appear to have attended the Court of that Manor. The Manor of "Bankers" claimed jurisdiction over a large portion of the area, and the owners of Brockley paid rent of 4s. 8d. yearly to the Lord of the Manor.

During the reign of Henry II, Brockley was held by Wakelin de Maminot, by whom it was granted to Michael de Turnham, who, however, sold it to Juliana, wife of Wakelin, to found a religious house. Meanwhile a religious order known as the Premonstratensians had settled at Ottham, in Sussex, and to them Brockley was given as a more convenient spot. Whether they ever moved to Brockley is doubtful since Begham, in Sussex, was shortly afterwards given to them and there they built their Abbey and lived there until the days of Henry VIII.

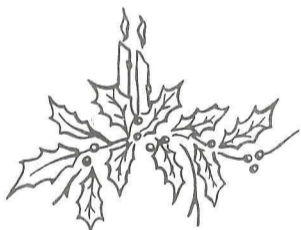
King John in 1208, confirmed their ownership of "Brockele" and they continued to hold the property until 1526, when under Henry VIII, the dissolution of their Abbey resulted in the land being held by Cardinal Wolsey until 1529 when it came into the hands of the crown.

On May 4th 1568 Queen Elizabeth granted the Manor of Brockhill to Philip Conway, but in 1608 it had again reverted to the crown.

By 1692 Edmund Boulte owned the land and it passed via Richard Wilkinson to the Rev. William Wickham, whose two daughters, Mary and Anne, carried this and another considerable estate in the parish of Deptford into the family of Drake, of Shardeloes, Co. Bucks. Mary married the Rev. John Drake, rector of Agmondesham whilst Anne married in 1780 his elder brother Thomas who to comply with the will of John de la Fountain-Tyrwhitt had changed his name in 1776 to Tyrwhitt. But in 1796 he resumed his paternal name and became Tyrwhitt-Drake.

The area was now split between the Drakes and Tyrwhitt-Drakes.

*This is the first of a series of articles we plan to publish on local history. Future articles will cover the development of the estate as is and the origin of road names many of which are hinted at in the above potted history.*

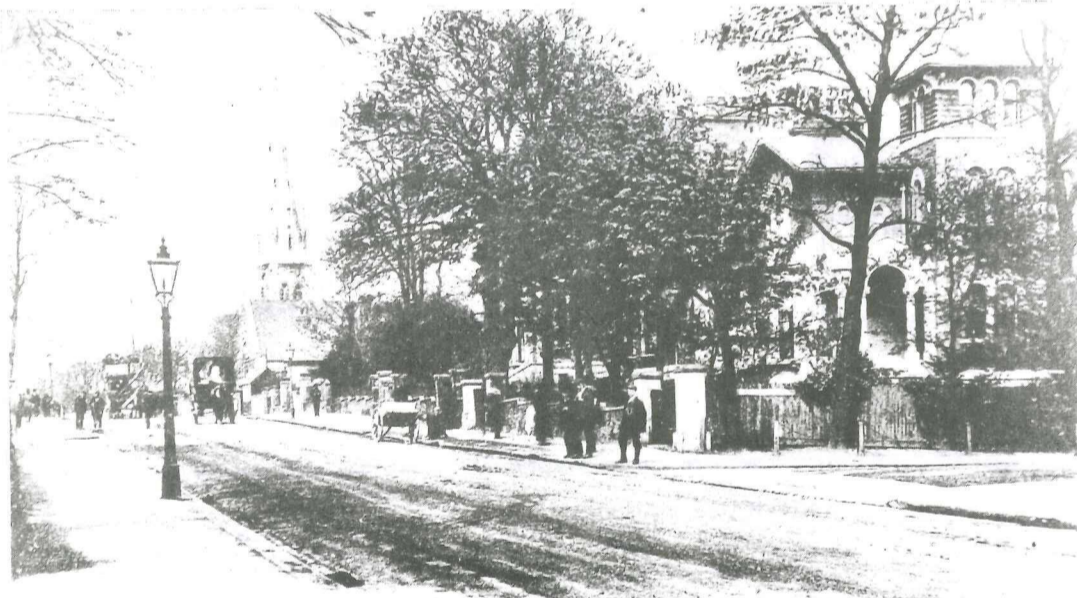


## TRAFFIC

### HILLY FIELDS TRAFFIC CELL STUDY

Lewisham Council circulated a leaflet in Spring 1979 explaining that they wish to obtain residents' and groups' view on traffic problems in the Hilly Fields area. The Council's objectives are:-

- (i) to reduce and, where possible, eliminate extraneous traffic from the area;
- (ii) to maintain, improve and enhance the environment and character of the area for residents;
- (iii) to ensure adequate pedestrian facilities, to minimise inconvenience and hazard, particularly to children and the elderly; and
- (iv) to retain maximum freedom of movement for residents within the constraints of the other objectives.



*Loampit Hill around 1900.*

The area covered by the cell study includes most of the Conservation Area covered by Broc Soc. The Society has made some preliminary proposals covering such aspects as traffic control, safety measures and public transport which were discussed at our recent AGM. From that short debate it is clear that no single proposal will please everyone. We still believe that certain improvements can be made which will achieve a broad degree of consensus eg. the improvement of certain road junctions to eliminate bottlenecks and to reduce accidents, the control of heavy traffic through residential streets, the favouring of residents in terms of parking, access etc.

The time-table for measurement, consultation, experimentation and implementation will inevitably stretch over a couple of years.

The Broc Soc are meeting a representative of the surveyors department shortly to discuss the problem. Meanwhile we should like to hear from as many residents as possible about what you see as the problems and possible solutions.

Contact Julian Oliver on 692-4894.



# St PETER'S CENTRE

## CENTENARY WEEK ST. PETER'S CENTRE

The Management Committee arranged a variety of entertainments suitable for all ages:-

The film show and Disco were highly successful. The competitions were well attended - Womens Darts Champion was Rene Smith, runner up Maureen Brewster. Mens Darts was won by John Cowey, runner up Ian Barrett.

The trophies were kindly donated by D.E.Brummie and presented by Councillor Cyril Cook.

Snooker champion was Alan Hardy. Badminton unfortunately was not played out as too many arrived.

The Wine and Cheese evening could have done with better attendance. Wine was sold to all around.

There was a disappointing attendance on Friday for the Blackbottom Stompers considering the quality of the jazz band.

Saturday Dinner and Disco was well attended however, and helped pay for the less well supported nights.

We are starting a Snooker-Darts Club on Tuesday evenings at 7.30 p.m. and hope to put on more film shows for the children during the school holidays.

Clara Cole

## WASTE PAPER

*It is regreted that owing to the low cost that the paper mills are currently paying for waste paper - £4 ton for mixed waste paper and £12 per newsprint - it is no longer viable for us to expend the time and petrol used in collecting every month.*

*Waste paper collection was the major and most regular source of the Society's finance and this is a serious blow. The Society has sufficient funds however to cover this coming year's expenses (mainly cost of Newsheets) and an eye will be kept on the price of waste paper to see if it is worth restarting collection.*

*Thanks to all in the area who have so regularly helped the Society by collecting their waste paper and to Geoff Cridlam and his helpers for organising it.*

## PLANNING APPLICATIONS

September, October and November 1979

86 Tyrwhitt Road - Conversion

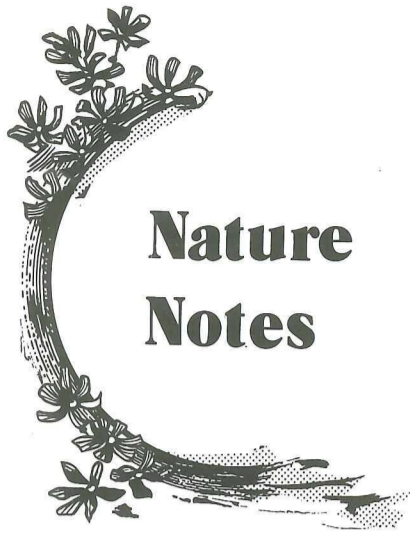
89 Manor Avenue - Conversion to 4 flats.

79 Upper Brockley Rd - continued use of garage to the rear for motor car servicing.

61 Breakspears Road - the continued use as a group home for unsupported mothers.

2 Ashby Road - bookbinder opposite Wickham Arms new 1 storey extension.

Trees pruning: 16 St. Margarets Road.



## Nature Notes

### Garden Bushes and Trees

If your garden feels a bit bare, rather than the opposite - a complete jungle this is a list to choose from of some supposedly easy to grow bushes and trees. Plant now - between October and March.

### Climbing Plants - on garden walls etc:-

- Jasmine - yellow flowers in winter
- Clematis
- Honeysuckle
- Russian Vine - not in a confined space it grows huge.
- Virginia creeper
- Ivy

### Bushes

- Mock Orange 6-10' high
- Buddleia 9-20' high attracts butterflies
- Forsythia 10-18' yellow flowers in spring
- Veronica 5'
- Lilac 8-15'
- Broom up to 15' high

Ask advise of other gardeners or get free cuttings.

### Trees - ask advice from a nursery on distance from the house etc.

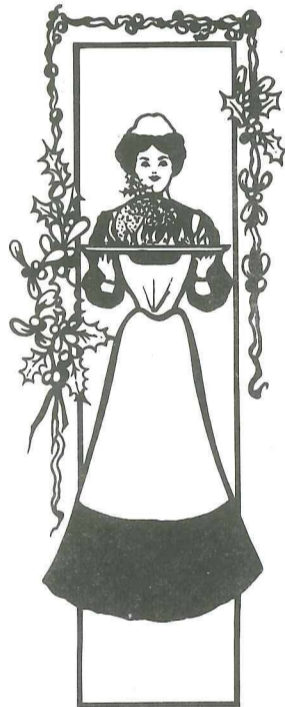
- Almond
- Crab Apple
- Judas Tree
- False Acacia - grows to 30' so plant it far from the house.
- Whitebeam
- Ash - grows to 40'

Plant a Tree Week 'for our children' was in November.

## Well done Lewisham!



New houses in Tressillian Crescent



### ANTIQUES WANTED

I wish to purchase any of the following pre 1930 items:  
Wardrobes, Sideboards, Bookcases  
Display Cabinets, Dining Tables,  
China, Brass, Tiles, Bric-a-Brac  
ANYTHING OLD AND INTERESTING

Phone Ian Middleton 01 - 692 - 2845 or  
write 91 Tyrwhitt Road, London SE 4

THE OLD FIRM  
55 LOAMPIT HILL SE 13

The Oldest Antique Business  
in this area requires  
OLD FURNITURE, PAINTINGS  
anything INTERESTING .....  
TOP PRICES PAID

J.P. Jones & Sons The Old Firm  
01 - 692 - 2057

### WICKERS WORLD

31 Lewisham Way  
opposite Goldsmiths College  
CANE & BAMBOO  
FURNITURE ETC.  
also large variety of  
boxes, bags, mugs,  
plant hangers and  
oriental gift ware.  
Phone: 691 1221



Beginners ballroom and latin american  
dancing classes; every Thursday evening  
Brockley Infants School, Brockley Road  
All ages welcome, usual ILEA fees

For Details ring

01 - 467 - 6830

**ADS**

# AGM

Our A.G.M. for 1979 was held at St.Peters Hall on the 24th. October. A brief summary of our years activities were given which included our current preoccupation with Lewisham Way and the Borough's Hilly Fields Traffic Cell Study.

Mention was made of the Borough's proposal to plant trees this Autumn in some of Brockley's shorter roads such as Darling Cranfield and Glensdale. The proposed refurbishment and adoption of Wickham Gardens by the Borough has been held until the freeholder was found. She has been located in the form of an elderly lady residing on the south coast who was not aware of her freehold rights. Assuming that the legal difficulties can be overcome and finance made available we are still hopeful that this scheme will be carried out.

Lewisham's shopping policy report promoted lively discussion. The report seemed to reinforce the current trend for major centres with big car parking facilities such as Riverdale Centre and Bromley etc. supported by small local centres such as Brockley Road and Croften Park. The use of the car for shopping and the commercial appeal of the big stores seems to rule - O.K? Opinion was heavily divided as usual.

After the tedious procedure of appointing the Society's Officers and Road Representatives the two major topics for the evening were discussed:- The first being our optimistic plans to halt the decline and promote improvement of Lewisham Way.

The following ideas were batted back and forth:-

Traffic - no obvious solution and may get worse

Improve shop forecourts with an imaginative paving and planting scheme.

Promote development of the vacant 'Pynes' site as a focal point for a new local shopping centre.

Line the edge of the main road with trees, walls, plant beds etc. so as to screen the traffic from sight.

Encourage unified face lift.

Better lamp posts, benches, signs etc.

Expand Memorial Gardens at the entrance to Manor Avenue

Car park (small scale) and parking recesses in shop forecourt paving.

Remove doubts, finally, about road improvement schemes which have hitherto blighted some parts of Lewisham Way.

We plan to contact other local groups in order to pursue these ideas in the near future. We are also considering promoting a small pilot scheme so as to further generate interest.

Traffic and transport always generate heat and the debate on various suggestions for the Hilly Fields Traffic Cell was no exception. For more of this subject see separate article.

The evening ended with more informal chat aided by a glass or more of wine and a nagging, though maybe healthy doubt about our effectiveness.

## THANKS

*The Brockley Society and current Editors would like to express our gratitude to Bill and Kathleen Turner who almost single-handedly have produced the material and published our Newsheet with great skill and endurance for so many years.*