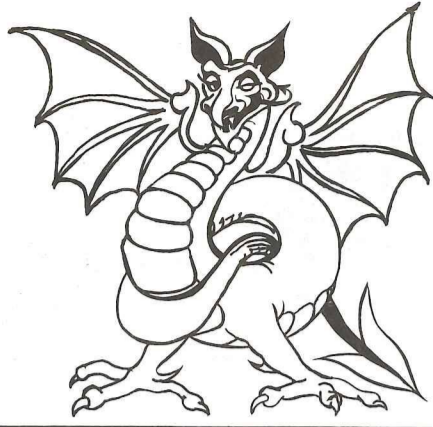


# BROCKLEY



# SOCIETY

**NEWS SHEET No.13** DELIVERED FREE TO OVER 3,000 HOUSEHOLDS IN THE BROCKLEY CONSERVATION AREA **October 1977**

## TRAFFIC

Manor Avenue area

About 200 people attended the public meeting on Sept 22nd to discuss this scheme, including local councillors and a traffic engineer from the Highways Department.

Although the Council viewed favourably the modified scheme produced by BrocSoc and the Brockley Neighbourhood Council the general view of the meeting seemed to be in favour of scrapping the whole scheme.

Residents in roads such as Barriedale and Geoffrey Road are angry at the increased commuter traffic but residents in roads which are now quieter are naturally pleased.

Shopkeepers in Upper Brockley Road complained of lost trade and difficulty with deliveries.

Obviously one man's road closure is another man's nightmare. Meeting closed at 10pm

The final decision will be taken at the Council meeting at 7 o'clock on October 11th. This meeting is open to the public.

It is hoped that having taken the trouble to find out residents' opinions, the Committee will take them into account when reaching their final decision.

Maureen Mayers



1975

45/47 Upper Brockley Road

NOW

GREAT IMPROVEMENT No 4 (Lewisham Council)



## PLANNING APPLICATIONS

August/September 1977

Another welcome rush of activity on conversions !!

- Upper Brockley Road
- Nos 1, 11, 116, 119, 128
- Manor Avenue No 32
- Cranfield Road No 71
- Wickham Road Nos 6, 56
- Lewisham Way Nos 236, 238
- Breakspears Road No 105
- Tressillian Rd-5, 57, 97, 108
- Tyrwhitt Road Nos 9, 19, 10
- Lewisham Way 203/211 to showroom, offices & 8 flats

Application from Borough Surveyor for crowning, thinning etc., trees at Elm House, Rokeby Rd Lilac House, Breakspears Rd 56/58 Wickham Road 140 Breakspears Road 11, 13, 87 Tyrwhitt Road

Also from 23 Hilly Fields Cres for felling 4 limes and pollarding 5 limes

## St. Peter's Centre

FUND RAISING activities will include JUMBLE SALE Nov 26 (If you have anything to collect please phone 692 9136/6977) A NEW YEAR PARTY Dec 31st tickets limited to 200 £1.25 (more details later) New Year DRAW - super prizes

Wednesdays GET-TOGETHER now running - see separate details.

If you are interested in starting a Mothers & Toddlers Group, we will help- contact Mrs Cole 692-5838

THE renovation of St. Peter's Centre is going rapidly ahead and you are invited to look in and inspect progress. Holes have been knocked through the walls of the main hall by Ray Cornwell and Cyril Cook ready for the main heating to be installed.

The new toilets have been installed and decorating work by Community Industry boys has been going on. To keep the place reasonably clean for present use we have four groups of the Management Committee who take it in turn to clean up on Friday afternoon or Saturday morning until we can afford a caretaker. If you can give an occasional helping hand to spread the load you will be most welcome: phone 692 5838/ 9136



RAPID PROGRESS is being made with the new hall at St. Andrews Brockley United Reform Church

## IMPORTANT NOTICE

Gunpowder Treason & Plot- WE ARE NOT COLLECTING on November Fifth - - - -

## WASTE PAPER

NEWSPAPER  
OLD MAGAZINES  
CARDBOARD  
OLD DIRECTORIES  
ETC., ETC., ETC.

will be collected on

SATURDAY OCTOBER 29th

starting at 10 o'clock

Please put your bundles out EARLY WHERE THEY CAN BE SEEN FROM THE ROAD

ASHBY ROAD

WE understand that the offices vacated by Hodder & Stoughton are to be taken over for use by Lewisham Borough Council Social Services Department.

## PEDESTRIAN CROSSING

Brockley Road/  
end of Wickham Road.



We understand from the Engineers & Surveyor's Dept that a G. L. C. Works Order was received at end of July and it is hoped that the crossing will be ready during October - plans of the gas & electricity mains are being checked now.

MARSHA PHOENIX MEMORIAL TRUST  
Financial problems have been settled and it is hoped to start work on the Hostel at 90 - 92 Tressillian Road in November

## Pebbledashing

If you value your house and want to enjoy the advantages of a Conservation Area --- -- don't pebbledash !!

It is a waste of money and even lowers the value of a house, and of its neighbours, too. It looks cheap.

Recently a few more Victorian houses in this district have been pebbledashed, and no matter what sort of house - whether one in a terrace, detached, or semi-detached, pebbledashing defaces them all. They make their neighbours look ridiculous.

Think of the following: In a district of brick houses, pebbledashing is an alien material. The warmth and character of brick is lost forever.

It suggests that something is being hidden, like cracked brickwork. As with most rendering, it cracks after a time, rain gets into the wall and dampness is encouraged. Repairs never match.

It collects dirt over the years. It does not improve insulation or waterproofing.

To make a home look fresh and smart, money would be better spent painting the windowframes and cleaning and pointing the brickwork.

Beware of builders who offer this work- you should advise against it.

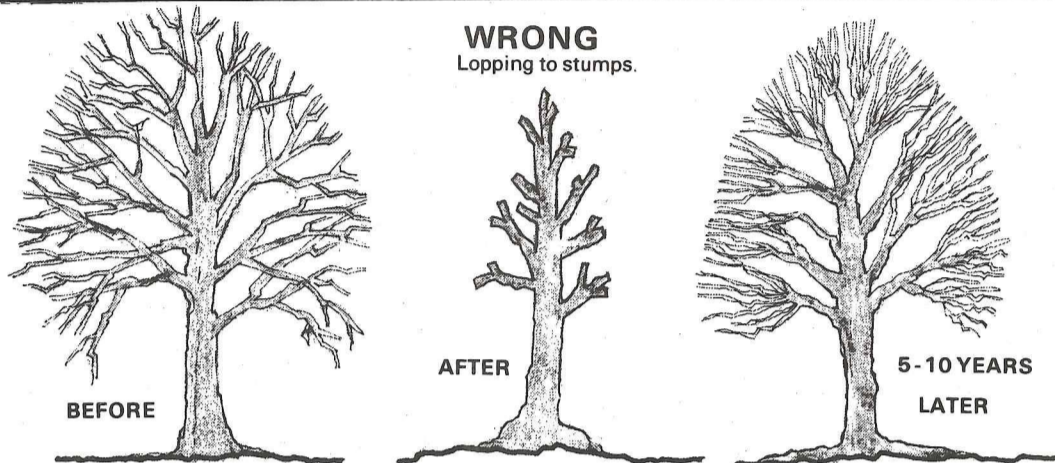
If you see pebbledashing being started phone 690-4343 as John Marchant, the Conservation Officer would be interested and may be able to stop the work.

If you need advice, contact us on 692-1553 at 25 Rokeby Road

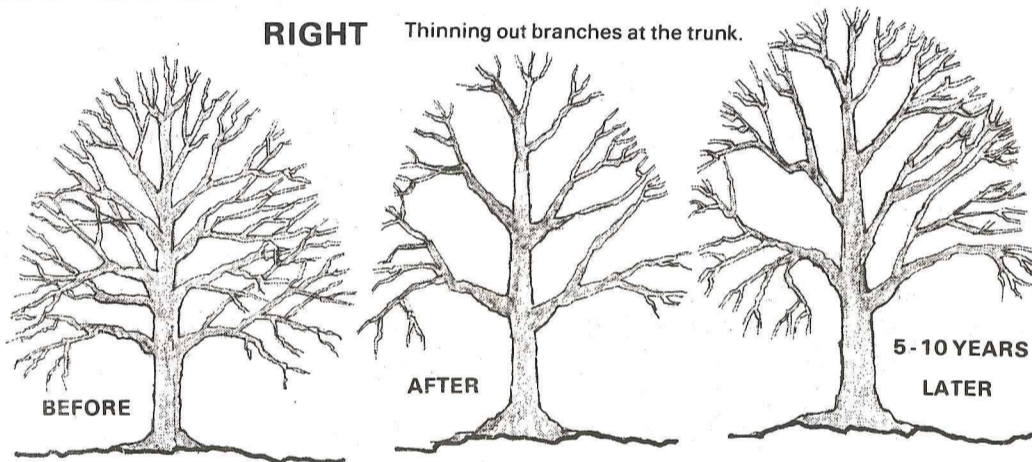
Chris & Juliet Johnson

# Beware the Hackers and Loppers

About this time of the year some people seem to be suddenly overwhelmed by an irresistible urge which drives them out into their garden where they proceed to hack the living daylight out of some poor innocent peace lovin' tree... The usual excuses are that the tree drops leaves about the place (which seems a reasonable thing for a tree to do) or that it blocks out light which is a good reason for pruning. Unfortunately the method often adopted makes the problem worse (see diagrams) even when the branches are drastically lopped the root system remains intact and the tree tries to correct the balance by throwing out a mass of branches creating a dense head of foliage so defeating the original objective. Lopping destroys the natural form of the tree and has to be done regularly once it is begun. For the sake of the tree and to solve the problems of light, etc., the pruning should thin out the branches with the aim of retaining the overall shape of the particular tree.



1. Mass of straight branches grows from each cut; cut rots, branches fall.
2. Tree shape destroyed and foliage much increased.
3. Constant and frequent pruning needed with many boughs to cut each time.



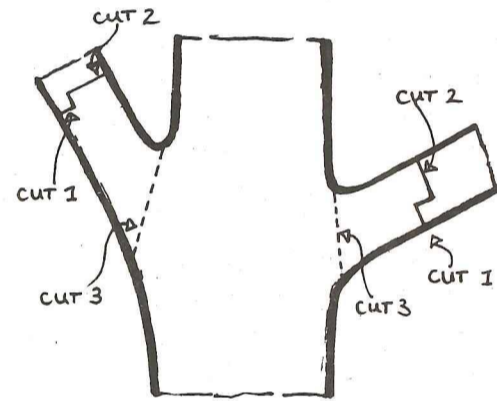
1. No further growth from cuts which heal over with bark.
2. Tree shape reserved and foliage permanently reduced.
3. No further attention needed for many years.

BROCKLEY SOCIETY offers a TREE PRUNING SERVICE but early booking is ESSENTIAL phone 691 1141 WE ALSO GIVE HELP AND ADVICE ON PRUNING TREES LARGE OR SMALL

IF YOU intend to prune or cut down any tree, remember you MUST get permission from the Council before starting. You will see requests are already in under the heading overleaf 'Planning Applications'. This applies if the tree is 4 inches in diameter or larger.

To cut down without permission can involve a fine of £400.

The sketch below shows you HOW TO MAKE THE CUTS



Heavy branches should be cut in sections, first undercutting to avoid tearing of bark, the final cut (3) being smooth with the face of the main trunk or the branch from which it is removed. All large cuts should be painted with a sealer such as 'Arbrex' to prevent rot setting in.

Waste Paper	
Feb/Mar	£65.52
April	£34.24
May/June	£89.42
July	£45.90
August	£61.54
September	£17.85

a d v e r t i s e m e n t s

GET YOUR Xmas Cards of St Peter's Church 5p including envelope from Mrs Heywood 692 6977 or Mrs Cole 692 5838. Ready NOW

### BROCKLEY FOOD CO-OP

DO YOU eat whole foods? We buy dried fruit, nuts, whole grains & flours, beans, pulses, honey, oil etc., at wholesale prices and only charge expenses. We're open twice weekly, sharing a duty rota and to help with bottling and packaging. If you are interested in becoming a member please phone Judith Bush on 691 1136 for more details.

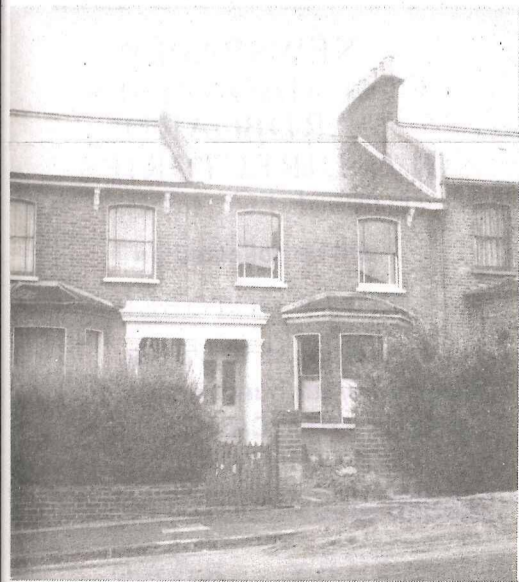
\*\*\*\*\*  
 A DATE TO REMEMBER  
 Saturday December 17th  
 CHRISTMAS PARTY  
 St. Peter's Centre  
 ● DISCO ●  
 8-11pm TICKET £1.25  
 Sausage & Mash Supper  
 Bring your own beverage  
 IN AID OF CHURCH FUNDS  
 \*\*\*\*\*

Are you a

? NSO ?  
 (not-so-old)  
 or a  
 NSY  
 (not-so-young)

whichever you are, you would enjoy visiting the WEDNESDAY GET-TOGETHER 2.30 to 4.30 St. Peter's Centre CUPPA TEA & CAKE RAFFLE ETC

BrocSoc News Sheet is published every 3 months. All items for publication to be in the hands of the editor Bill Turner 104 Tressillian Road SE4 by the 21st. of Dec, Mar, June, Sept.



1975 → NOW →  
 13 Harefield Road  
 GREAT IMPROVEMENT No 5  
 (Lewisham Council)